

# Violoncello

# Kaiserwalzer

## Langsames Marschtempo

Johann Strauß jr., Op. 437

[illegible]

7

The bass line is written on a single staff with a bass clef. It consists of 16 measures. The first three measures are in 3/4 time, and the remaining 13 measures are in 2/4 time. The melody is as follows: G2 (quarter), A2 (quarter), B2 (quarter), A2 (quarter), G2 (quarter), F2 (quarter), E2 (quarter), D2 (quarter), C2 (quarter), B1 (quarter), A1 (quarter), G1 (quarter), F1 (quarter), E1 (quarter), D1 (quarter), C1 (quarter). The final measure is a whole note C1. The piece ends with a double bar line.

13

The bass line of 'The Rose Tree' is written on a single staff with a bass clef. It consists of 14 measures. The first measure is a whole note G2. The second measure is a whole note A2. The third measure is a whole note G2. The fourth measure is a whole note F2. The fifth measure is a whole note E2. The sixth measure is a whole note D2. The seventh measure is a whole note C2. The eighth measure is a whole note B1. The ninth measure is a whole note A1. The tenth measure is a whole note G1. The eleventh measure is a whole note F1. The twelfth measure is a whole note E1. The thirteenth measure is a whole note D1. The fourteenth measure is a whole note C1.

19

19 **2** pizz.  
p

26

20

arco

p

31

The bass line is written on a single staff with a bass clef. It begins with a series of eighth notes: G2, A2, B2, C3, D3, E3, F3, G3. This is followed by a series of half notes: G3, A3, B3, C4, D4, E4. The notation includes a *cresc.* (crescendo) marking and a *f* (forte) dynamic marking.

38

[illegible]

43

The bass line of 'The Rose Tree' is written on a single staff with a bass clef. It begins with a series of eighth notes: G2, F2, E2, D2, C2, B1, A1, G1. This is followed by a series of quarter notes: F1, E1, D1, C1, B0, A0, G0, F0. The melody is simple and repetitive, with a final G1 note.

49

49

pizz.

55 arco

pp f

63

Solo p

68

1 **Tempo di Valse** **Walzer I**

p

10

mf

18

pp f

27

3

38



46



54



62

**Walzer II**

1



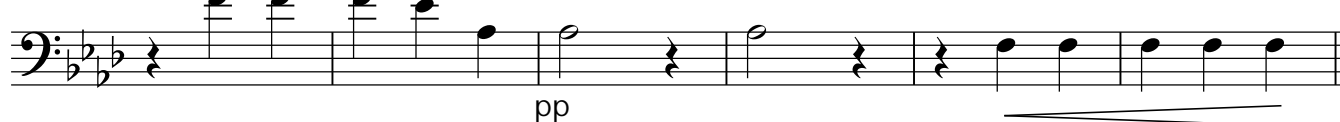
10



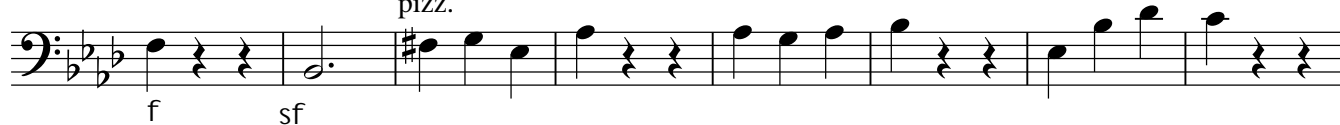
18



25



31



39



43

*f*

1 *f* **Walzer III**

*f*

5

*mf*

13

*mf*

21

*pp*

29

*f*

36

*f* *marcato*

46

*f* *marcato*

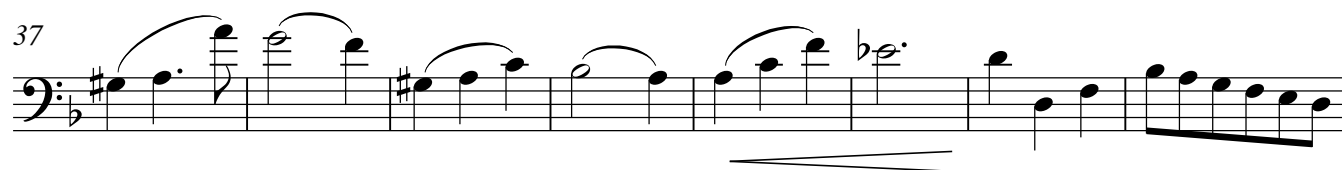
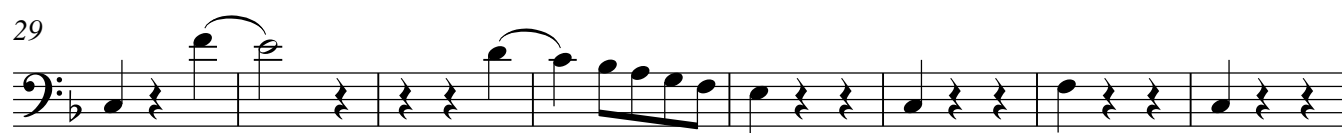
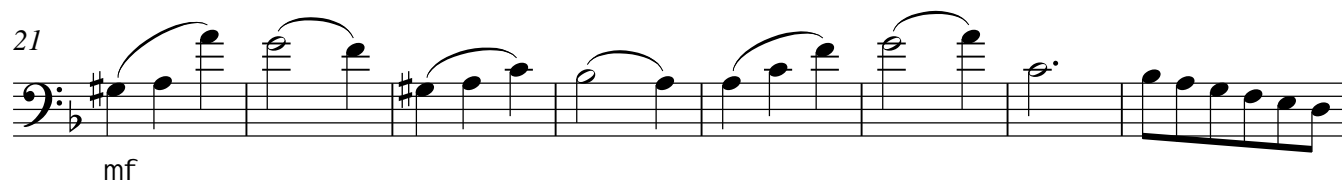
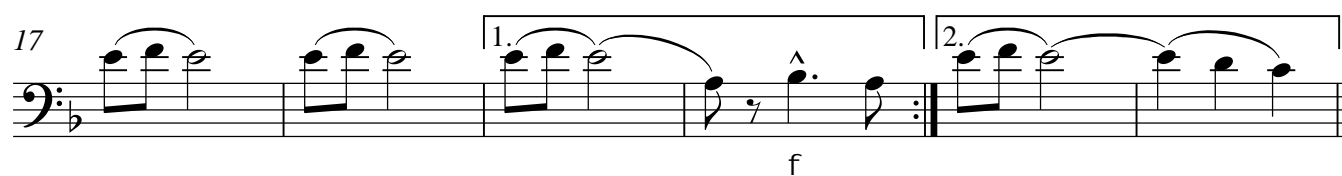
56

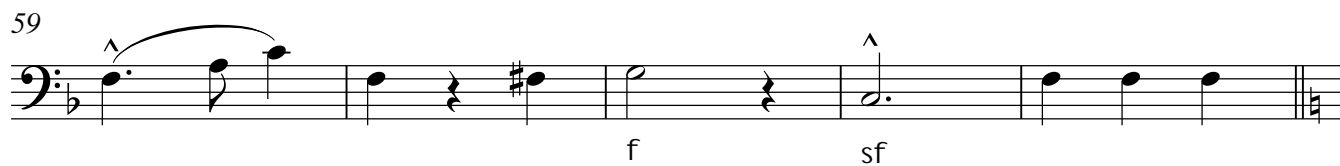
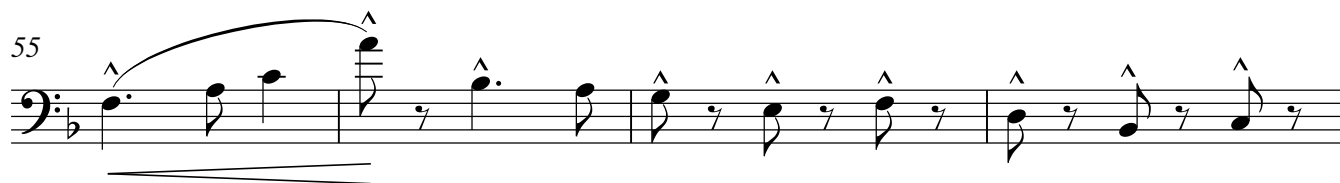
*f*

63

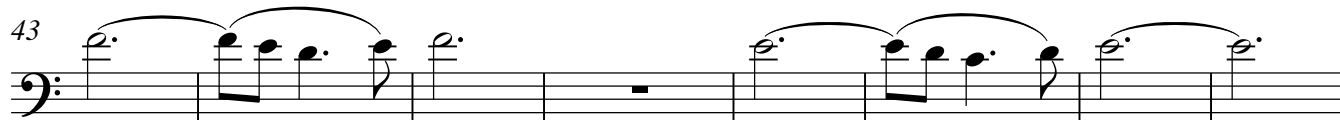
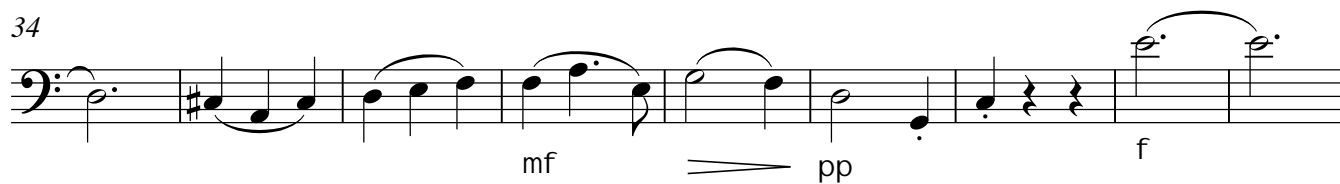
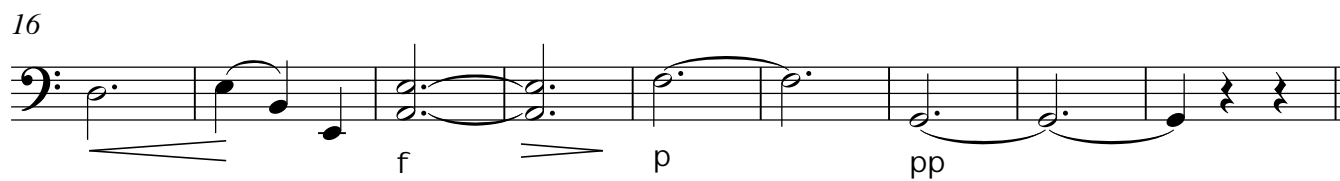
*f*

## 1 Walzer IV

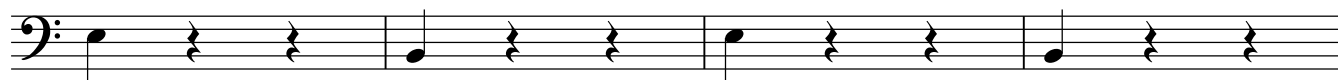




1 Coda



59 pizz.



63

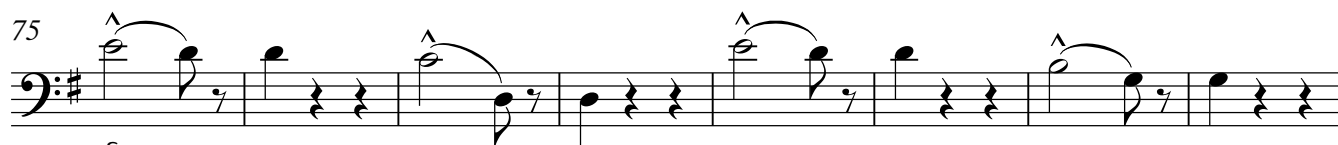


67 arco



p

75



f

83



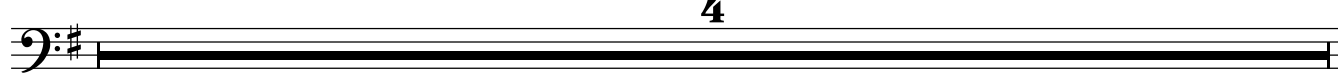
p

91



f

95



4

99

*f* *marcato* *f*

103

*marcato*

113

*marcato* *ff*

123

*f*

132

*Vi- 8* *p*

147

*f*

156

*pp* *rit.* *mf* *p* *-de*

165

*rit.* *p* *Tempo di Valse*

174

*f* *ff*

182

*ff* *ffz* *r-*