

Shadows



WORDS BY
E. R. BURGMAN

MUSIC BY
PERLEY DUNN ALDRICH

©

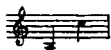
THE JOHN CHORSEY COMPANY
CINCINNATI, OHIO
1915

c

Shadows.

3

Solo Voice.



E. R. FOREMAN.

PERLEY DUNN ALDRICH.

Moderato.

p
All the pret-ty shad - ows, When the day is sweet,

p

Play up - on the mead - ows, Dance a - cross the wheat.

mf
When the day is o - ver Ev - 'ry shad - ow flees

Copyright, MCMVI, by The John Church Company. International Copyright.
Entered according to act of the Parliament of Canada in the year MCMVI,
by The John Church Company in the Department of Agriculture.

Cud-dies in the clo-ver, Slum-bers on the trees.—

Tempo di Valse.

Shad - ows, shad - ows, On the earth and

sea — Al - ways shad - ows! But

where is love for me. _____

The first system consists of a vocal line on a single treble clef staff and a piano accompaniment on grand staff (treble and bass clefs). The vocal line has a melodic line with a dotted note and a long horizontal line indicating a breath mark. The piano accompaniment features a complex harmonic structure with many accidentals and a flowing bass line.

L.H.

The second system is primarily piano accompaniment on grand staff. It continues the harmonic and melodic development from the first system. The label "L.H." is placed above the right-hand piano part. The music includes various chordal textures and a steady bass line.

Moderato.

Love is sun - ny weath - er, Shad - ows are the heart,

The third system begins with the tempo marking "Moderato." and a dynamic marking "p" (piano). It features a vocal line on a single treble clef staff and a piano accompaniment on grand staff. The vocal line has a melodic line with a dotted note and a long horizontal line indicating a breath mark. The piano accompaniment features a complex harmonic structure with many accidentals and a flowing bass line.

Should be close to - geth - er, Can - not live a - part.

The first system consists of a vocal line on a single treble clef staff and a piano accompaniment on a grand staff (treble and bass clefs). The vocal line has a melodic line with lyrics. The piano accompaniment features a bass line with a key signature of one sharp (F#) and a treble line with chords and some melodic movement.

mf
Shad - ow hearts are sing - ing, Ere love light has fled,

The second system continues the piece. The vocal line is marked *mf*. The piano accompaniment features a grand staff with a key signature of two flats (Bb, Eb) and a treble line with a long melodic line spanning across the system.

p
When the love is wing - ing, Then the hearts are dead.

The third system continues the piece. The vocal line is marked *p*. The piano accompaniment features a grand staff with a key signature of two flats (Bb, Eb) and a treble line with chords and some melodic movement.

Tempo di Valse.

p
Shad - ows, shad - ows, On the

The fourth system is marked *p* and *Tempo di Valse*. The vocal line is on a single treble clef staff. The piano accompaniment is on a grand staff with a key signature of two flats (Bb, Eb) and a 3/4 time signature. The piano accompaniment features a rhythmic pattern in the bass line and chords in the treble line.

earth and sea, Al - ways

shad - ows! But where is love for me,

Al - ways shad - ows! But where is

love for me.

much slower *p a tempo I.* *pp*