

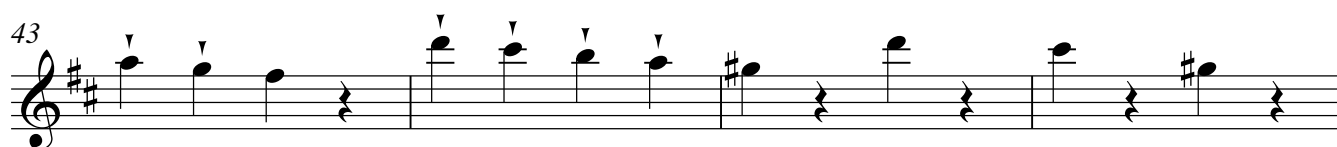
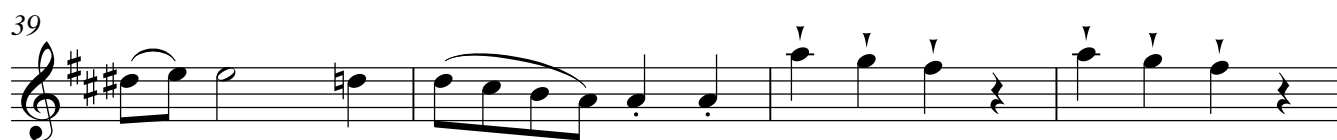
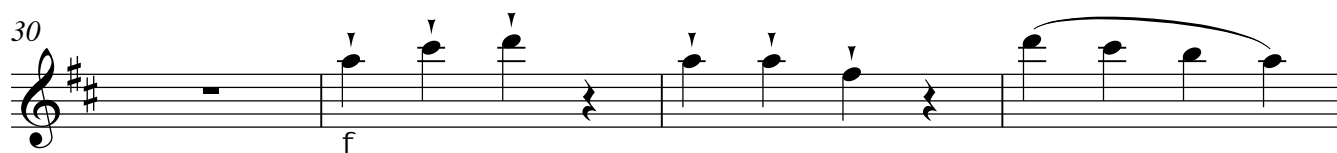
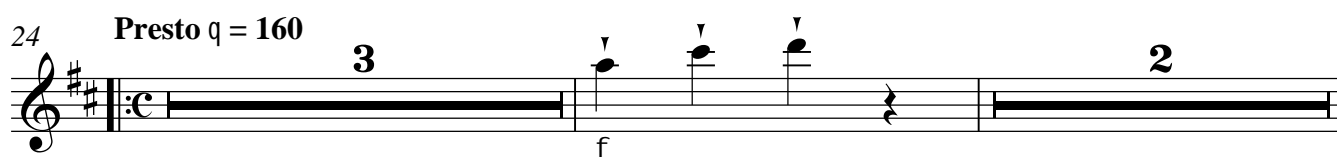
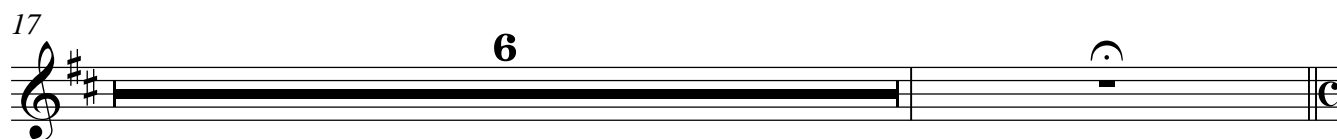
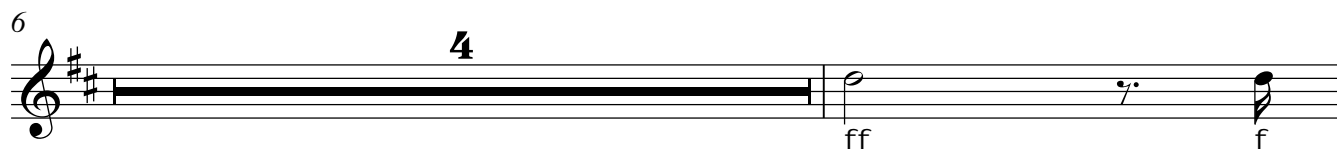
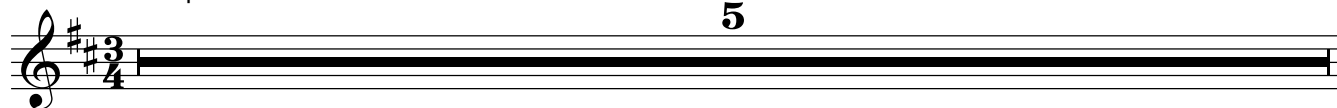
Oboe I

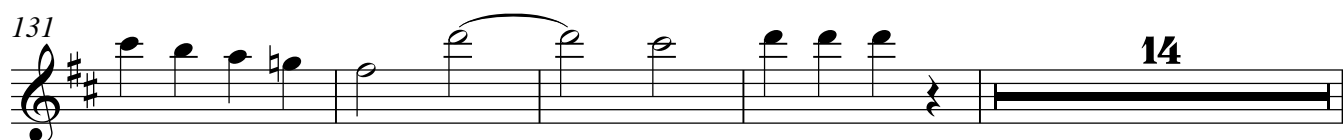
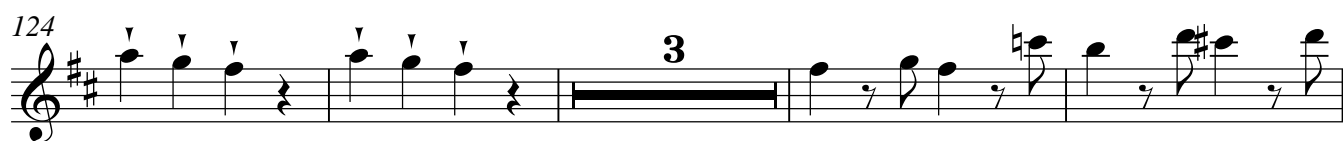
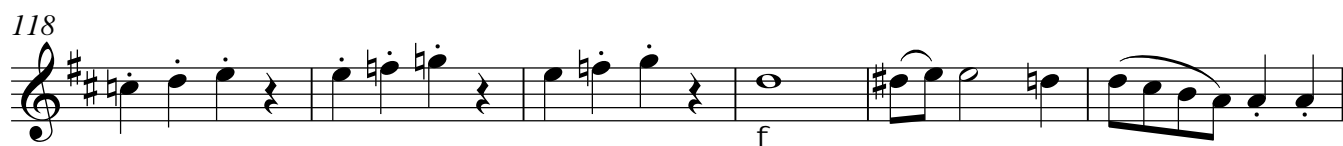
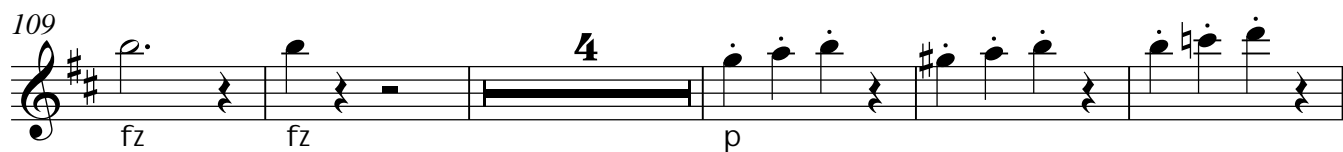
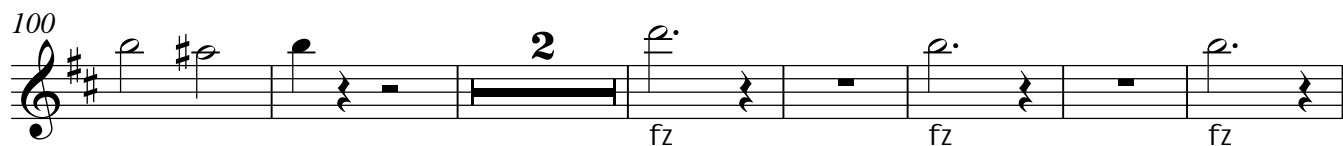
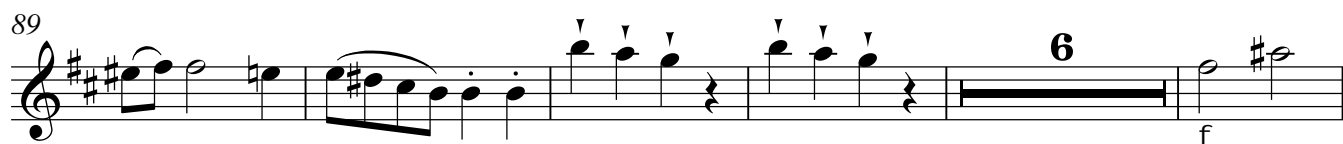
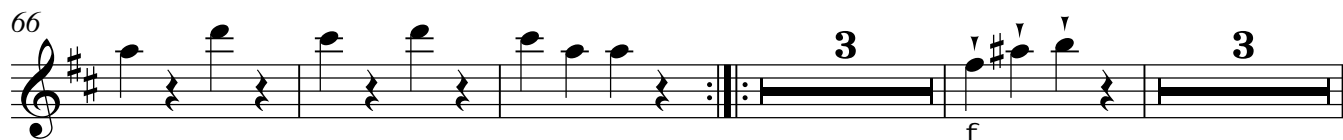
SINFONIA No.75

Joseph Haydn

Grave q = 60

I 5






149

Measures 149-152 of the musical score for 'The Rose Tree'. The key signature is two sharps (F# and C#), and the time signature is 4/4. Measure 149 starts with a treble clef and a forte (f) dynamic marking. The melody begins on a whole note G4, followed by a half note A4, a quarter note B4, and a quarter note A4. Measure 150 continues with a half note G4, a quarter note F#4, a quarter note E4, and a quarter note D4. Measure 151 features a half note C#4, a quarter note B4, a quarter note A4, and a quarter note G4. Measure 152 concludes with a half note F#4, a quarter note E4, a quarter note D4, and a quarter note C#4. The melody is accompanied by a simple harmonic line in the right hand, consisting of whole notes and half notes.


154



159

37

Measures 37-40 of the musical score for 'The Rose Tree'. Measure 37 begins with a treble clef, a key signature of one sharp (F#), and a repeat sign. The melody consists of eighth notes: F4, G4, A4, B4, A4, G4, F4, E4. Measure 38 continues the melody with eighth notes: D4, C4, B3, A3, G3, F3, E3, D3. Measure 39 features a whole rest, followed by a quarter rest, and then a half note G3. Measure 40 is a whole rest. The score includes dynamic markings 'f' (forte) under measure 37 and 'p' (piano) under measure 39. There are also fermatas over measures 39 and 40.

45 

[illegible]

73

p

81

81

89

2

f

pp

III

0 Allegretto q = 120

5 **f** 8

10 **5**

15 **f**

20 **Fine**

24 **9 32 16 D.C. al Fine**

IV

0 Vivace h = 124

5

6 **2 8 3**

12 **7**

19 **7**

