

Brass Quartet
or 4-part ensemble

Simbol very: Veruju

Composer: Peter Tchaikovsky 1878
Edited by Klaus Bjerre 2003

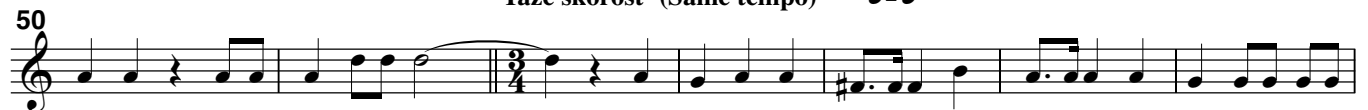
Two choruses, ## 8 and 9 from the
Crysostomos liturgy opus 41

C - trumpet 2

Dovol'no skoro (Rather fast)



Taze skorost' (Same tempo)



Brass Quartet
or 4-part ensemble

Simbol very: Veruju

C - trumpet 2

65

73

84

95

pp

p *mf* *p*

Detailed description: This block contains the musical notation for the C - trumpet 2 part, measures 65 through 95. The music is written on a single staff in treble clef. Measure 65 starts with a treble clef and a key signature of one sharp (F#). The piece is in 4/4 time. Measures 73-83 feature a change to 2/4 time. Measures 84-94 feature a change to 3/4 time. The piece concludes in measure 95 with a double bar line. Dynamics include *pp* (pianissimo) at the end, and a crescendo from *p* (piano) to *mf* (mezzo-forte) and back to *p* in the 3/4 section.

Posle Simbola very: Svjat

Skoro (Fast)

1

7

13

ff

Detailed description: This block contains the musical notation for the section 'Posle Simbola very: Svjat', measures 1 through 13. The music is written on a single staff in treble clef. The tempo is marked 'Skoro (Fast)'. The piece is in common time (C). It begins with a dynamic of *ff* (fortissimo). The piece concludes in measure 13 with a double bar line.