

Oboe 2

Symphony #1 (1) in Cmajor

1st Movement(6'10")

Michel Rondeau
1972.

3

8

15

27

41

47

53

60

77

83

89

3

ff

mf

1972

Symphony #1 (1) in Cmajor Oboe 2

2
95



101



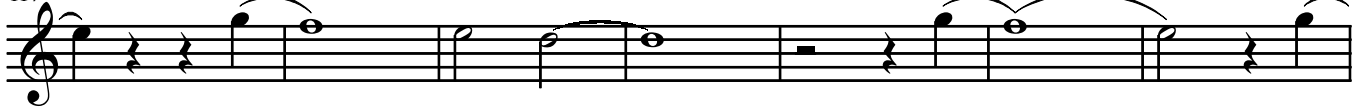
106



111



117



124



132

2x to coda



140



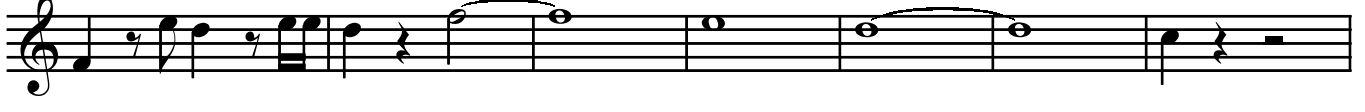
146



159



166



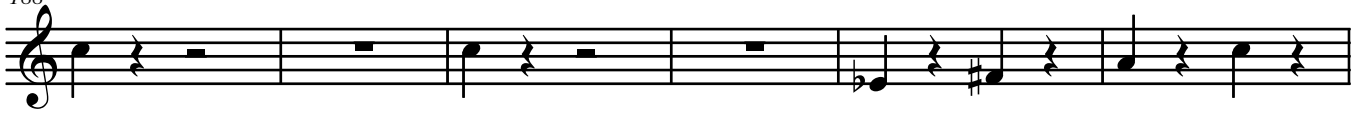
173



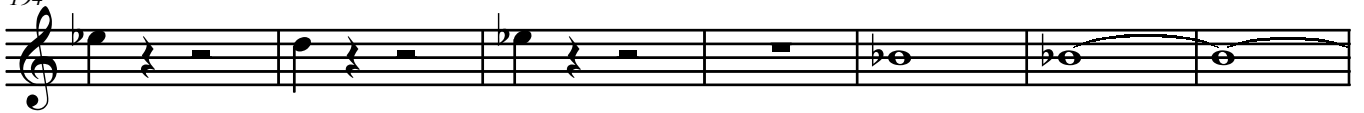
180



188



194



201



209



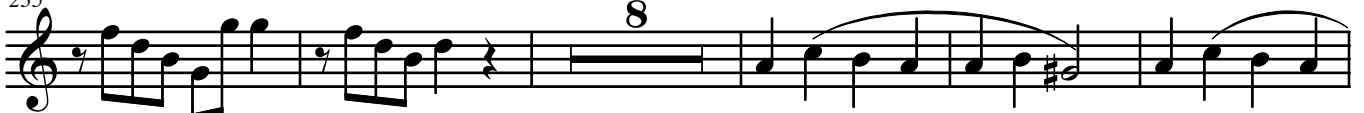
216



224



235



248



254 **11**

270

276 Φ Coda **3**

284 **2** **3**

291 **6** **3** **3**

302 **2**