

Violin I

Symphony #10 (I) in C

1st Movement (5'36")

Michel Rondeau
15th, Feb-March 6th, 2005

A la fugue (♩=circa 120)

mf

5

9

14

20

25

30

34

38

43

Symphony #10 (I) in C

2
47



52



57



61



65



70



75



79



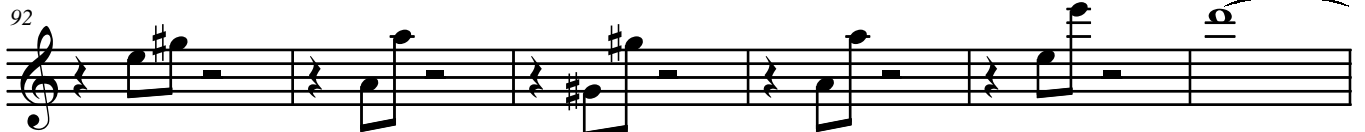
83



87



92



98



Symphony #10 (D in C)

102

105

110

115

120

124

128

132

136

140

144

149

4
155

Symphony #10 (I) in C



159



164



