

# I: Fanfare

E. J. Robertson Op. 46 #1

MAESTOSO

Horn I

*f*

Trpts HORN

*p* *f*

(actual sound)

39

*p*

47

*p*

63

*p* *ff*

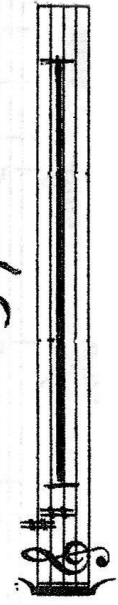
HORN I

# II: Waltz

E. J. Robertson Op. 46 #2

FAST WALTZ TEMPO

37



38 Ob. & Clt. continue

38

HN  
ff  
Flts & Vlns

48

57

57

HN  
ff

76

85

85

f  
mf

116

116

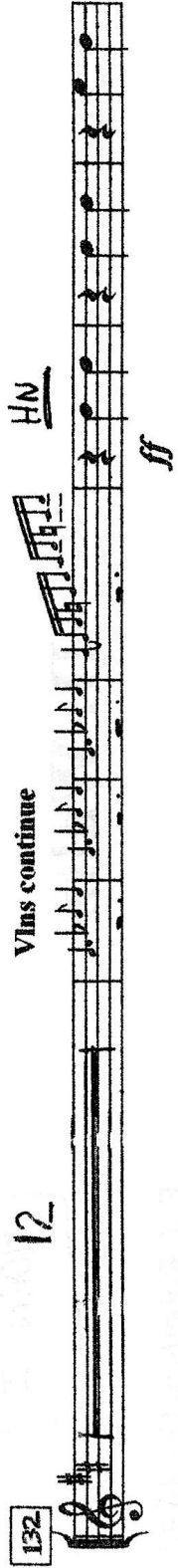
HN  
ff

123

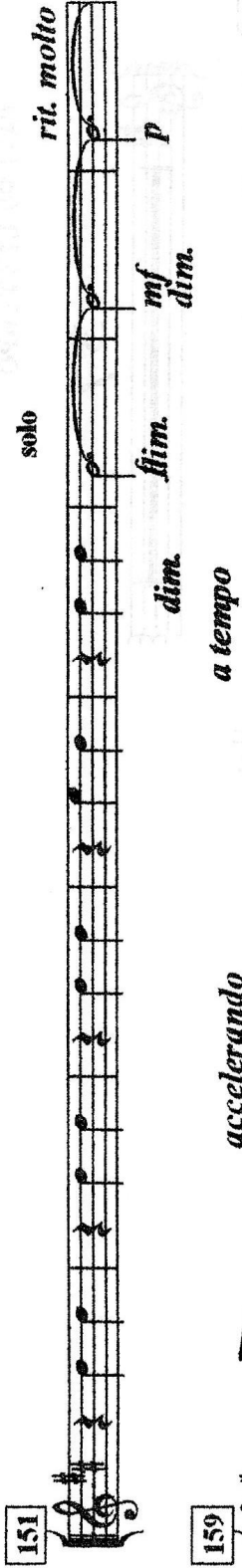
dim.

12

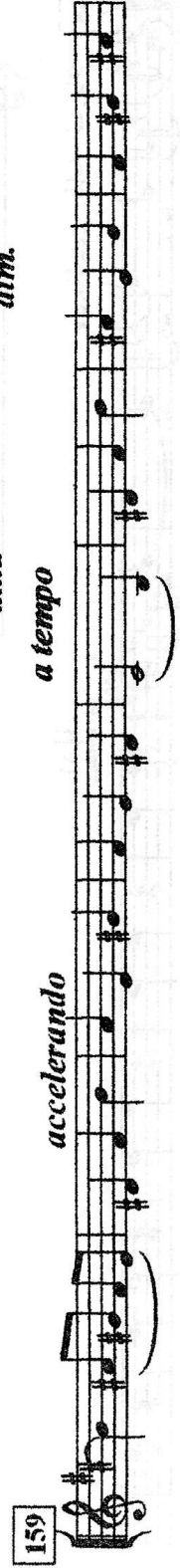
Vlns continue

132 

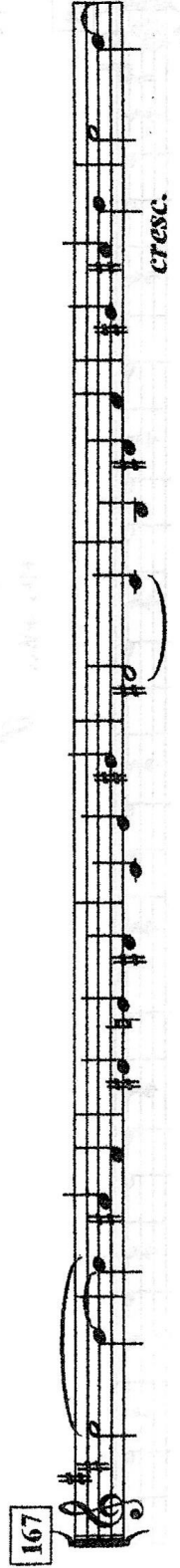
151

151 

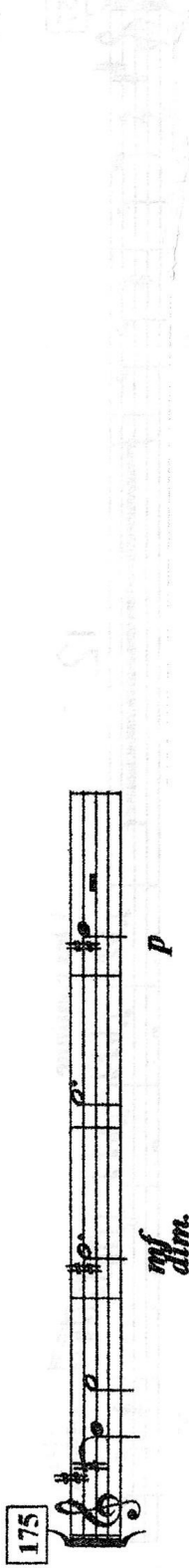
159

159 

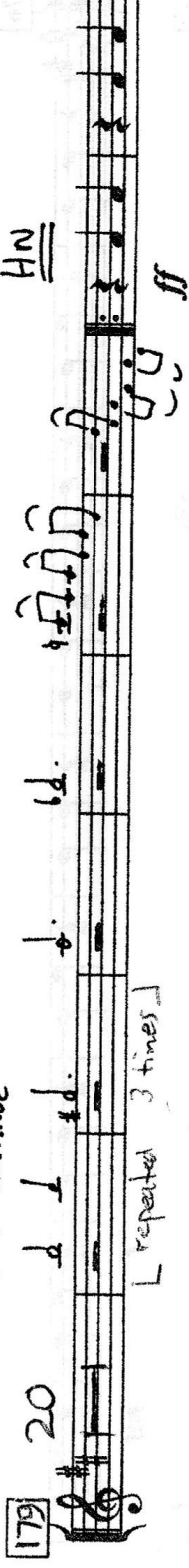
167

167 

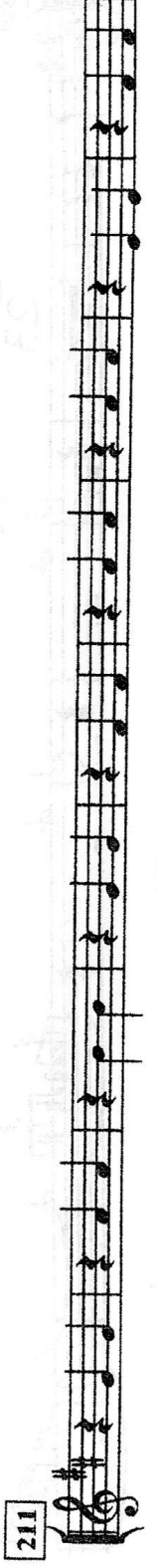
175

175 

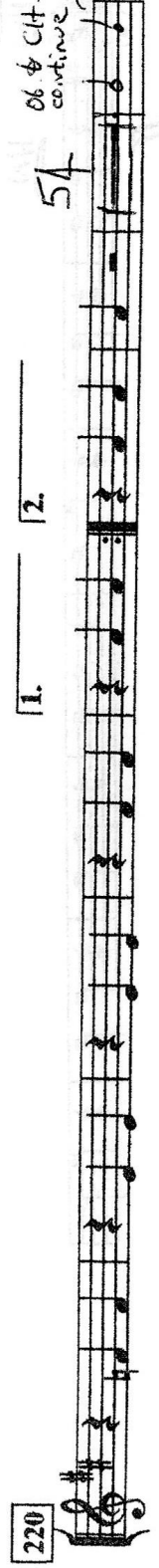
179

179 

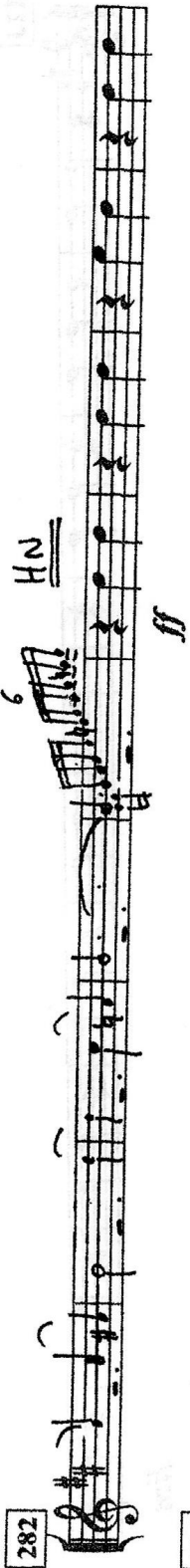
211

211 

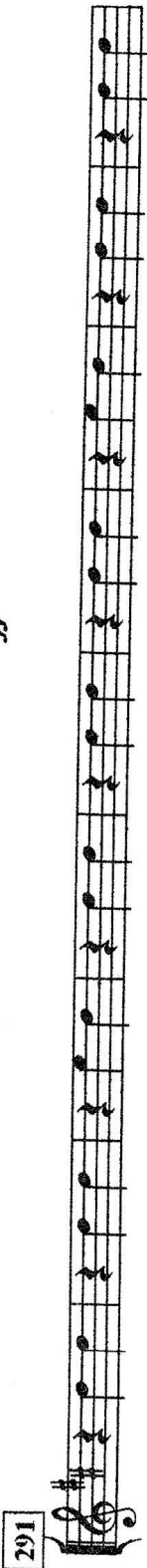
220

220 

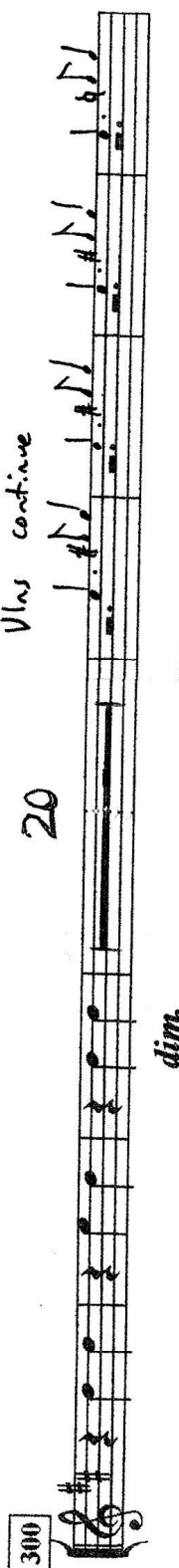
282

282 

291

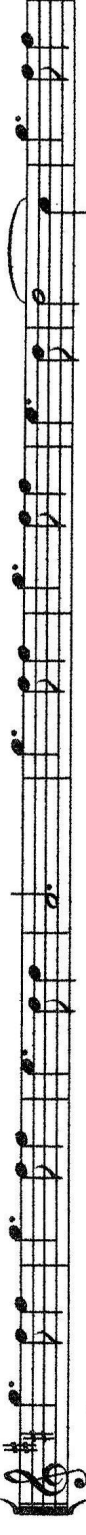
291 

300

300 

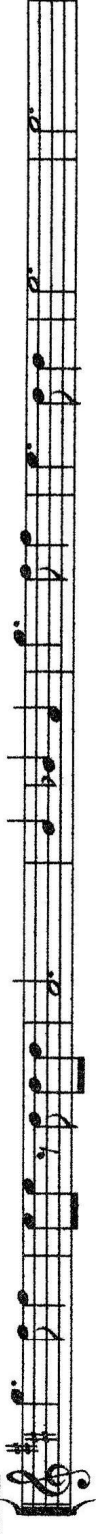
327

$\overline{HN}$

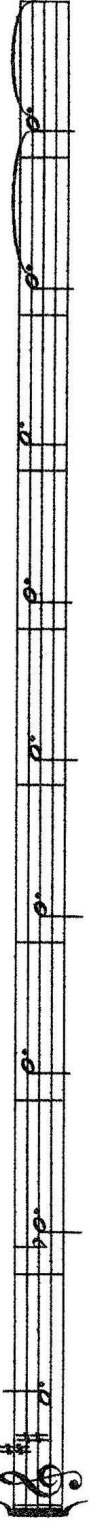


ff

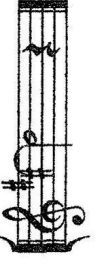
336



344



353



HORN I

# III : Elegy

E. J. Robertson Op. 46 #3

SLOW  
cellos

62

N.B. Cues are not transposed

67

71

HORN

*mf*

74

77

*cresc.* *f* *dim.*

80

*mf* *cresc.* *f*

83

*cresc.* *ff*



HORN I

# IV: March

E. J. Robertson Op. 46 #4

QUICK MARCH TEMPO

2

2

*p*

N.B. Cues are not transposed

11

2

*p*

30

*p*

HN I

A

43

*p*

5

2

*mf*

*p*

58

VLNS continue

25

*p*

91

*mf*

HN I

103

*dim.*

*p*

*mf*

*cresc.*

115

*dim.*

*p*

*cresc.*

*mf*

*mf*

127

*f*

*dim.*

*mf*

*p*

3

168

+ VLNS

HORN I

150 HN I  
mf

162

174  
cresc. f 19

201  
dim. mf cresc. f  
FL. & VLNS WIND HN I

209 4 2

220 3 2 3

232  
rall. mf a tempo  
Wind continue HORN

258  
ff f  
Trpts HORN I