

Violino Primo, Oboe & Flauto Traversi

Suite in E \sharp

a 4. voci

Fortunato Chelleri

1688 – 1757

Published by Johan Tufvesson.

Non-commercial copying welcome

Revision : 1.11

Violino Primo

Ouverture

Fortunato Chelleri (1688–1757)

Ouverture

Violino Primo &
Oboe

4

8

11

1.

2.

Allegro

15

21

27

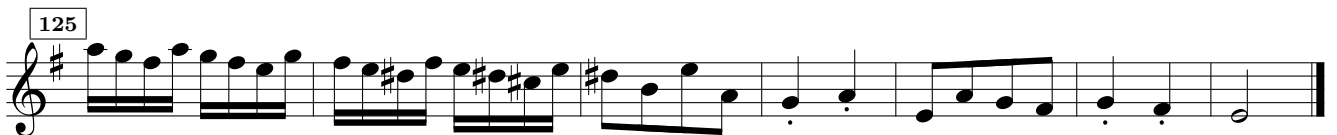
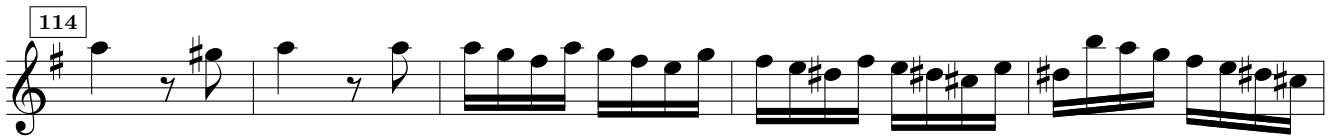
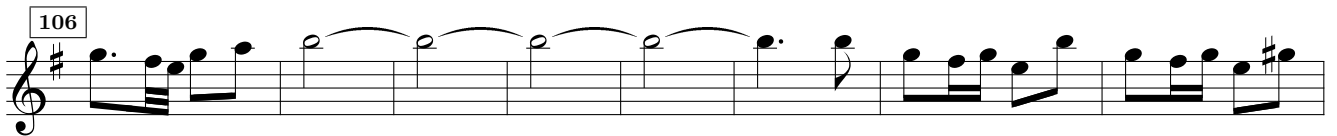
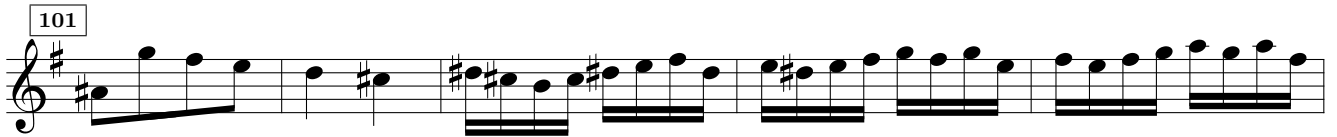
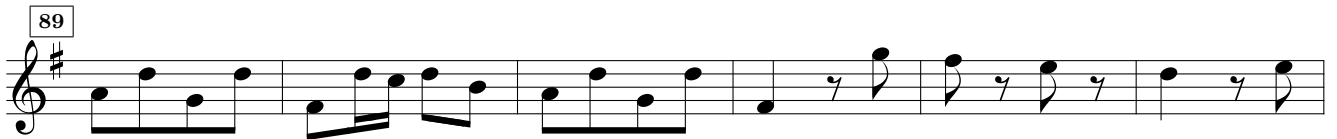
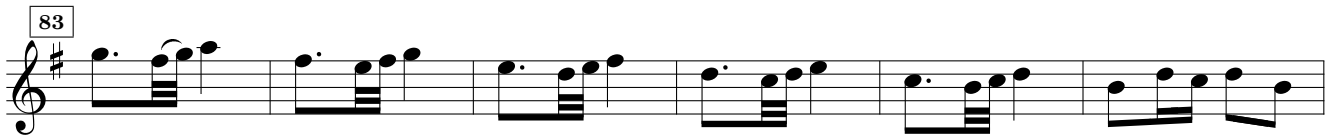
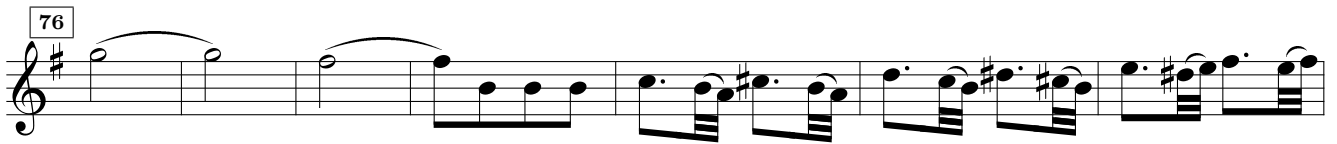
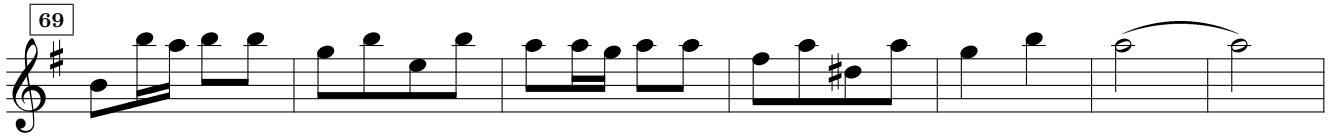
33

39

piano

44

52



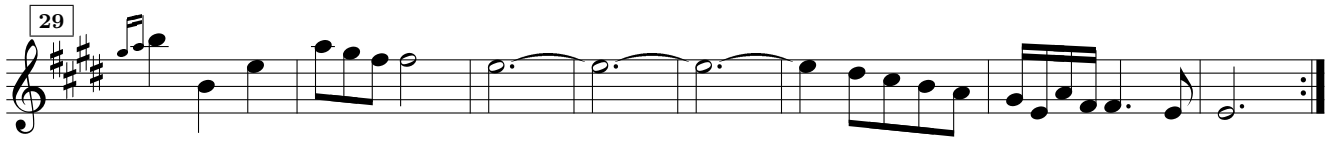
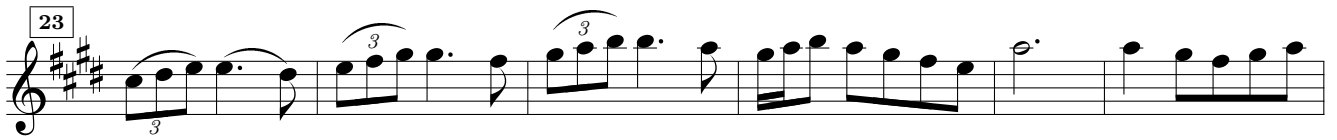
Andante

Musical score for 'Andante' in G major, 2/4 time. The score consists of six staves of music. The first staff begins with a treble clef, a key signature of one sharp (F#), and a 2/4 time signature. The music features a mix of eighth and sixteenth notes, with some rests. The second staff starts with a box containing the number '6'. The third staff starts with a box containing '12'. The fourth staff starts with a box containing '18'. The fifth staff starts with a box containing '24'. The sixth staff starts with a box containing '30' and ends with a double bar line and repeat dots.

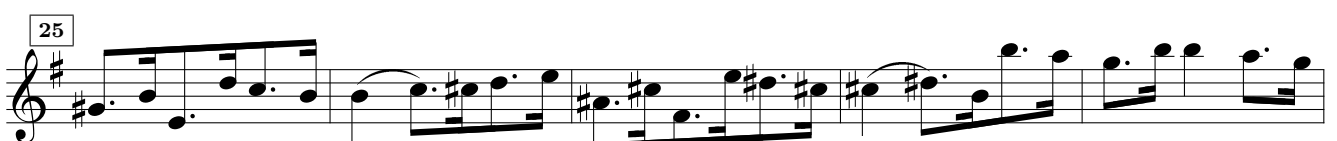
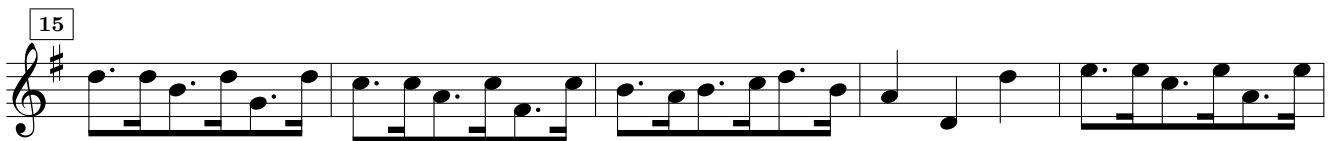
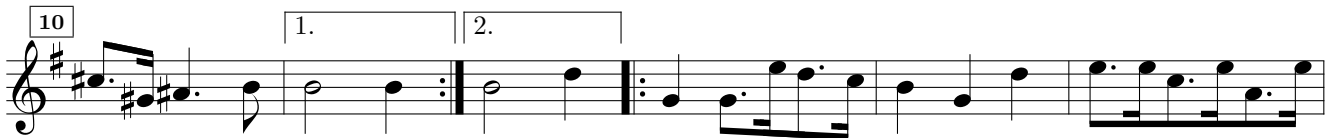
Lamento

Violino Primo & Flauto Traversi
Violin Con Sordin

Musical score for 'Lamento' in G major, 3/4 time. The score consists of four staves of music. The first staff begins with a treble clef, a key signature of one sharp (F#), and a 3/4 time signature. The music features a mix of eighth and sixteenth notes, with some rests and triplets. The second staff starts with a box containing the number '6' and includes the word 'piano' below the staff. The third staff starts with a box containing '11' and includes first and second endings. The fourth staff starts with a box containing '17'.



Courante



Gigha

Menuet