

Suite in E \sharp

a 4. voci

Fortunato Chelleri

1688 – 1757

Published by Johan Tufvesson.

Non-commercial copying welcome

Revision : 1.11

Basso

Ouverture

Ouverture

Fortunato Chelleri (1688–1757)



5



9



12



Allegro

15



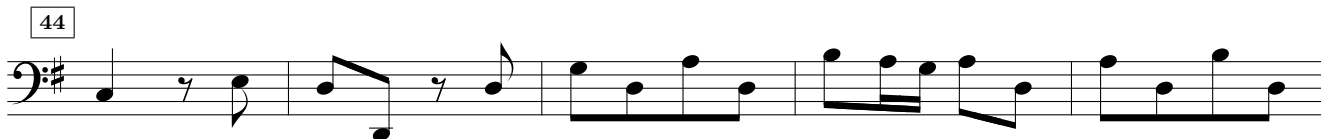
31



37



44



49



55



62



69



75



80



86



92



98



105



111



117

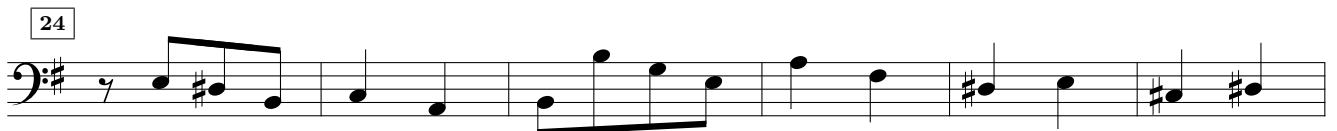
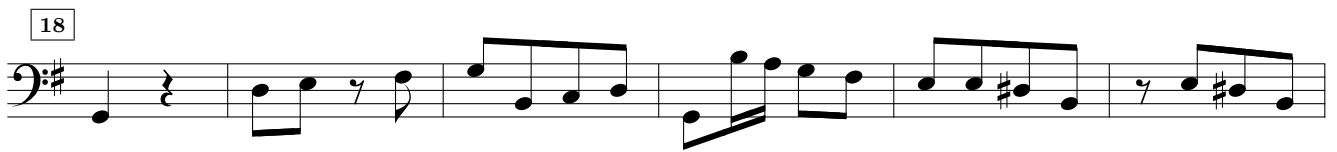
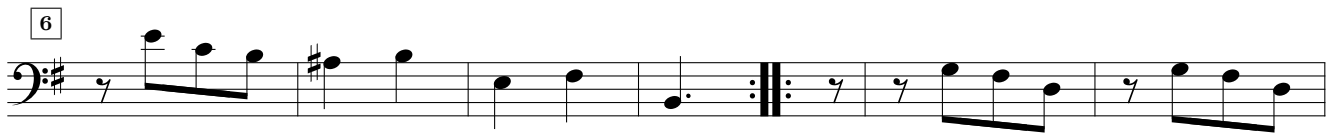


124



Detailed description: This page contains ten staves of musical notation in bass clef with a key signature of one sharp (F#). The notation includes various note values, rests, and articulation marks such as slurs and accents. Measure numbers are provided in small boxes at the beginning of each staff: 62, 69, 75, 80, 86, 92, 98, 105, 111, 117, and 124. The piece concludes with a double bar line at the end of the final staff.

Andante



Lamento



25

31

Courante

5

9

12

18

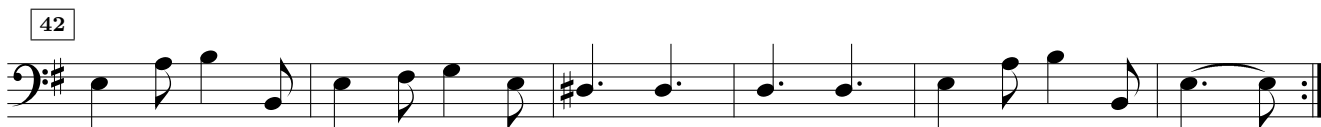
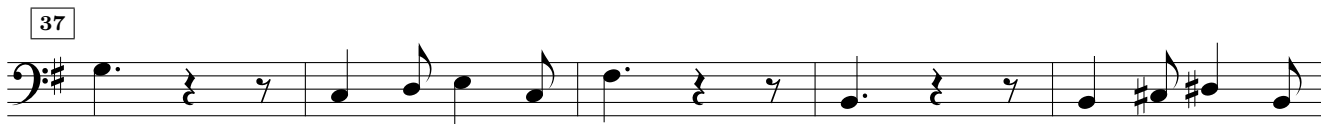
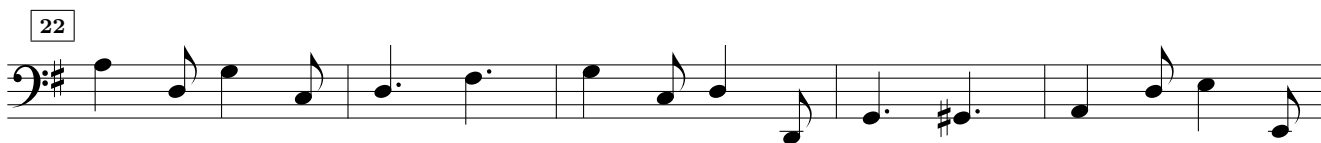
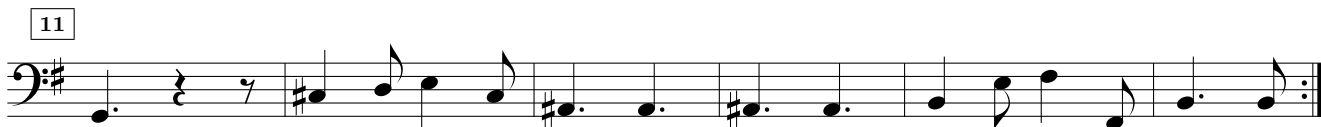
24

29

34

39

Gigha



Menuet

