

2/Marche/a/2 Clarinetto toni B./2 Clarinetto toni Dis./  
 2 Corno toni Dis./2 Tromba toni Dis/et Fagotti/[Kopftitel:]  
 1.Marche par Princess: Amalia [von Preussen]- 2.Marche Comp:  
 par Prince Christian [von Hessen]/ (beide Es-dur)



Ms.ca.1790.

10,5 x 17 cm.

9 St.:cl 1,2 in B,cl 1,2 in Es,cor 1,2,tr 1,2,fag. je 1 Bl.

Alte Sign.: N<sup>o</sup>21.

1223

N<sup>o</sup> 21

1

*Marche* [1. v. Princessin Amalie v. Preussen,  
- 2. v. Prinz Christian v. Hessen.]

2 Clarinette toni B.

2 Clarinette toni Dis.

2 Corno toni Dis.

2 Tromba toni Dis.

et Fagotti 10 Bl.

Landesbibliothek  
Darmstadt

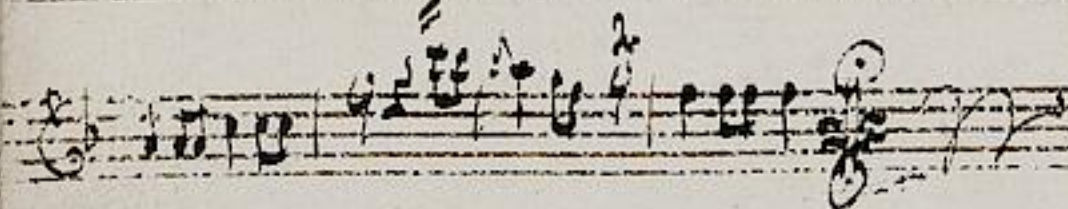
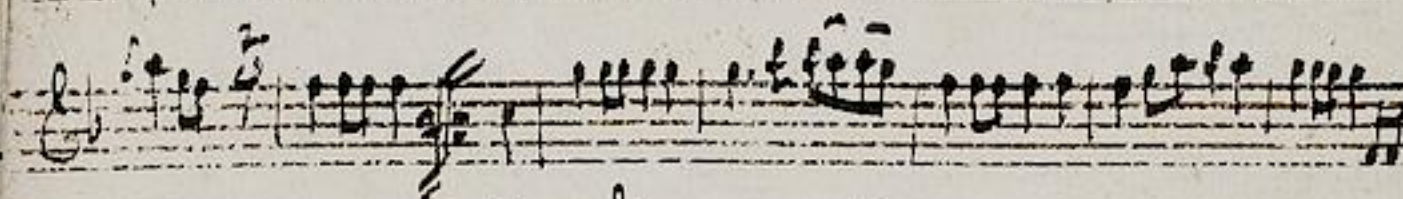


1. Marche par Princess Amalia. • Clarinette A. toni D<sup>2</sup>

1223/24



2. Marche Comp: par Prince Christian.



1. Marche <sup>1223</sup>

Clarinetto 2<sup>do</sup> ex B. 3



Handwritten musical notation on the left page of an open manuscript book. The page contains several staves of music, with the top two staves showing notes and rests. The paper is aged and yellowed.

*2. Marche.*

Handwritten musical notation for '2. Marche' on the right page of the manuscript book. The page features three staves of music. The notation includes various note values, rests, and clefs. The paper is aged and yellowed.



1223

1. *Marche* Comp: par Princess Amalia, Clarinetto A. ex Dis.



2. Marche

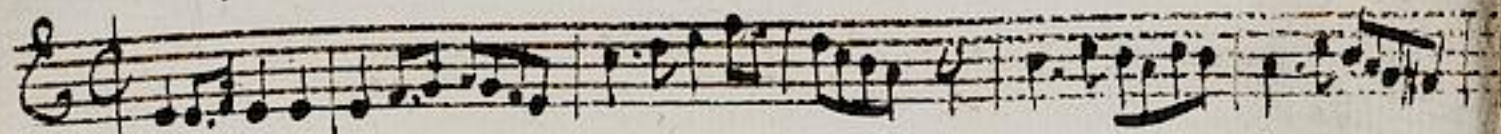
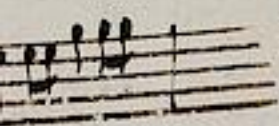




1. Marche

1223

Clarinetto 2<sup>do</sup> toni Dis<sub>5</sub>

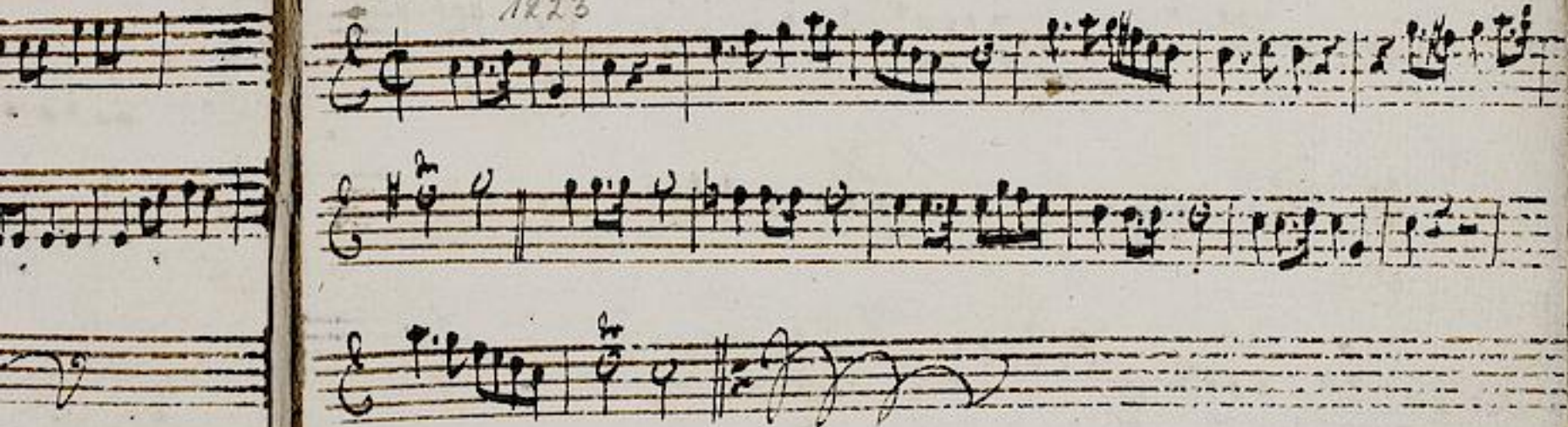


2. Marche.

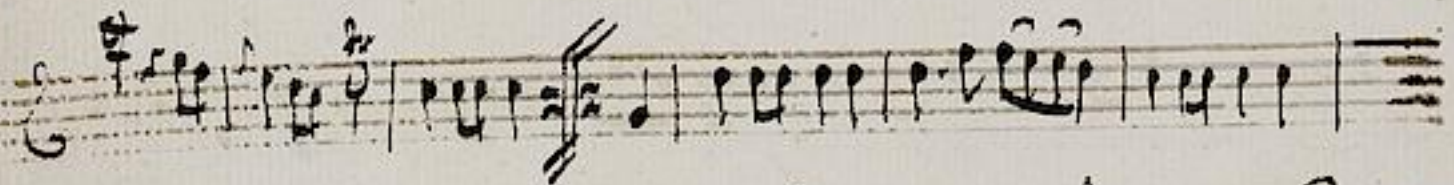


1. Marche ex Dis. Corno Primo. 6

1223



2. Marche.



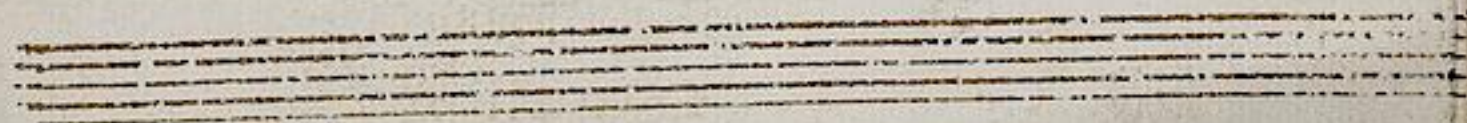
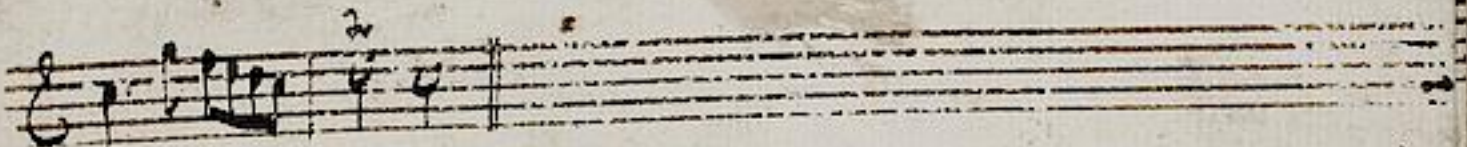
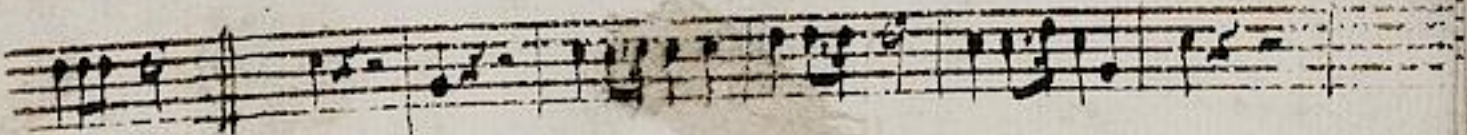
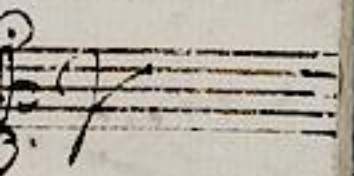
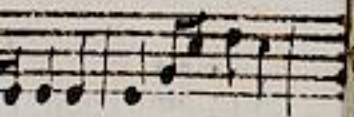
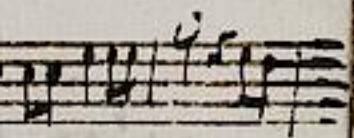
1. Marche <sup>1223</sup> Corno Secondo toni Dis!



2. Marche



1. Marche 1223 Tromba Primo toni Fis. g.



2. Marche.



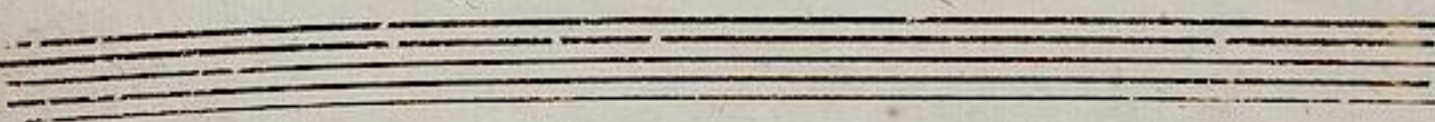
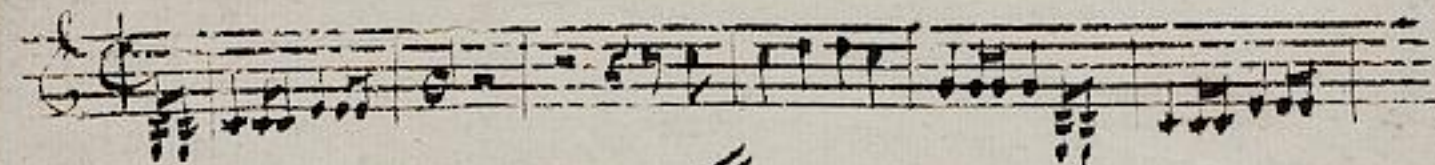
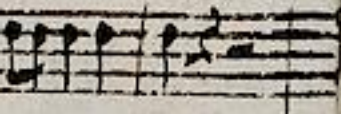
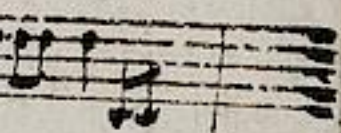


1. Marche <sup>1223</sup> Tromba 2<sup>da</sup> toni Gis<sup>9</sup>

Handwritten musical score for Tromba 2da, consisting of three staves. The first staff begins with a treble clef and a key signature of one sharp (F#). The notation includes various rhythmic values such as eighth and sixteenth notes, and rests. The second staff continues the melodic line with similar rhythmic patterns. The third staff concludes the piece with a final cadence, marked by a double bar line and a fermata over the final note.

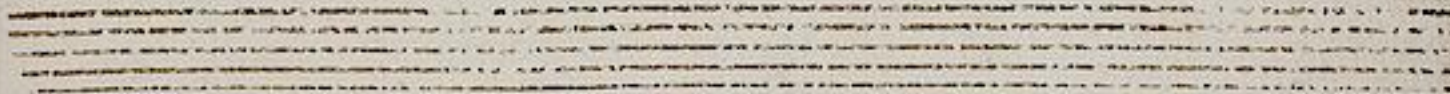
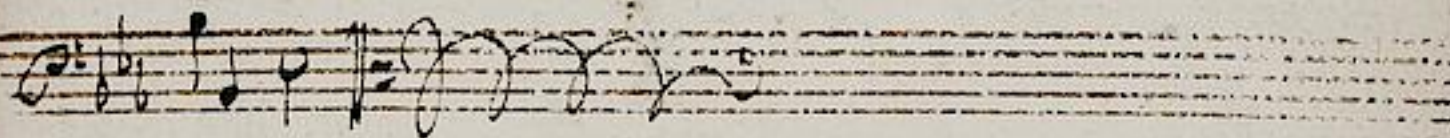


2. Marche.



1. Marche <sup>1223</sup> Fagotto.

10



2. Marche.

