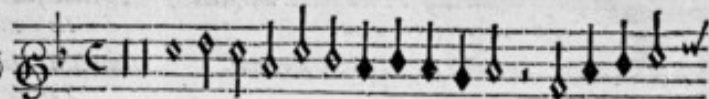
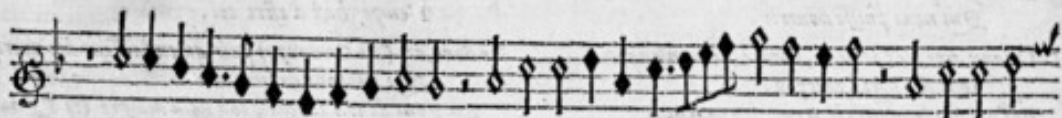
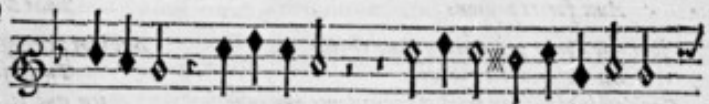




A T R U I S .



REMIERE FANTASIE.



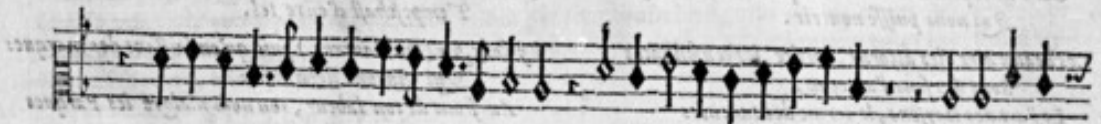
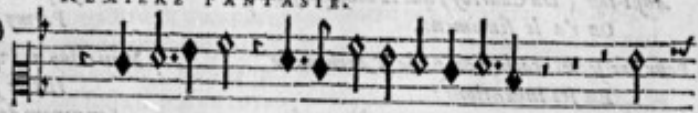




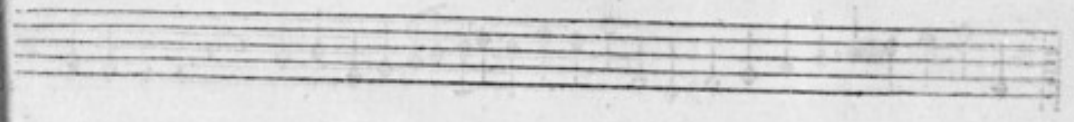
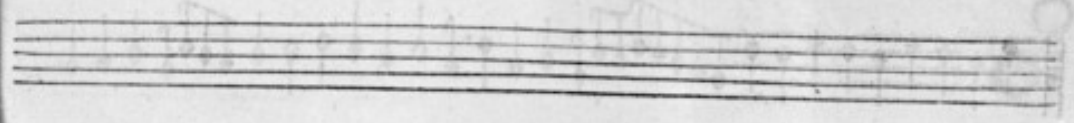
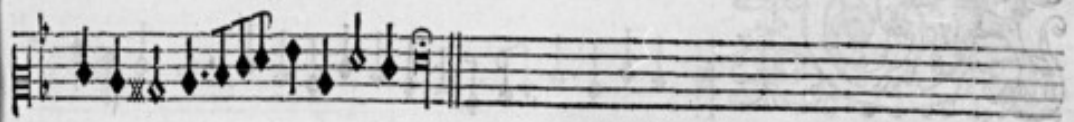
A TROIS.



REMIERE FANTASIE.



H A V T E C O N T R E .





A TROIS.

A musical score for a piece titled "RENIERE FANTASIE." The score is arranged in four staves. The first staff begins with a large, highly decorated initial letter "P" that incorporates a classical figure. The music is written in a style characteristic of the 17th or 18th century, with a treble clef and a key signature of one flat. The notation includes various note values, rests, and dynamic markings. The piece is marked "A TROIS." above the first staff.

T A I L L E .

