

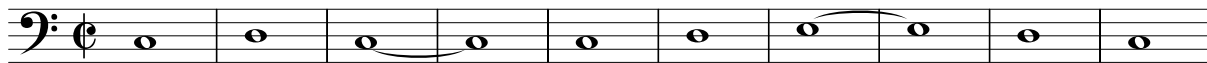
Requiem

Introitus

Johann David Heinichen

Violoncello / Violone

Fagott ad lib.



11



22



33



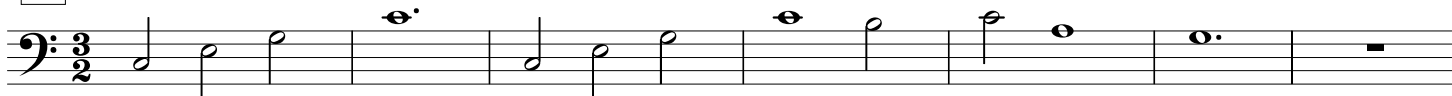
44



55



66 **Te decet**



73



82



90



98



Kyrie



6



11



16



26



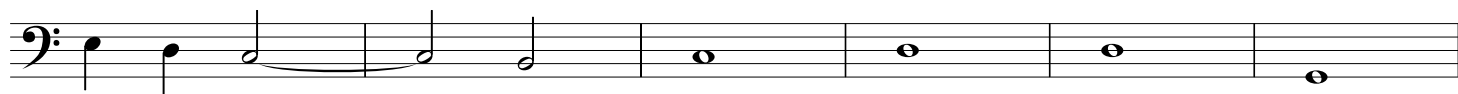
31



Christe



11



17



23



37



Kyrie ut supra

Sequenz



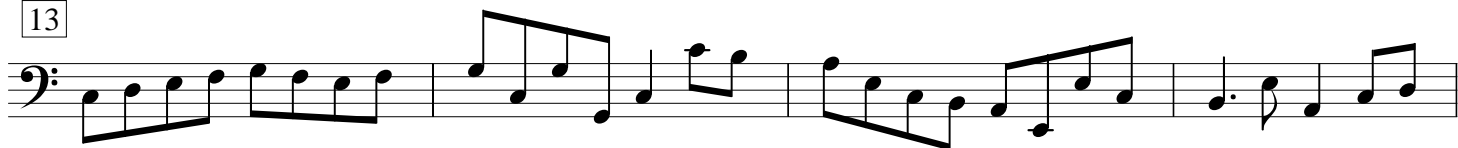
5



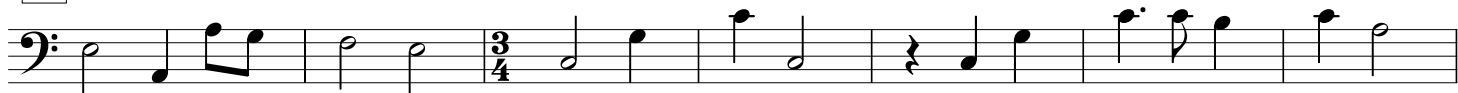
9



13



17

Tuba mirum

24



30

37 **Mors**

41



45



51



57 *Adagio*

61 *Rex tremendae*

65

68 *Recordare*

73

80

88

95

103

110

117

126

134 **Juste judex**

139



143



147

152 **Ingemisco Qui Mariam**

195



199



203



208



212



216

**Inter oves****22**

[242] Confutatis



[246]



[250] Oro



[259]



[269] Lacrimosa



[272]



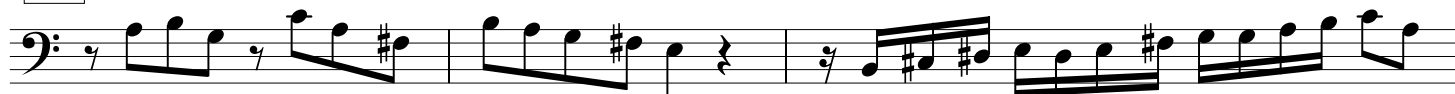
[275]



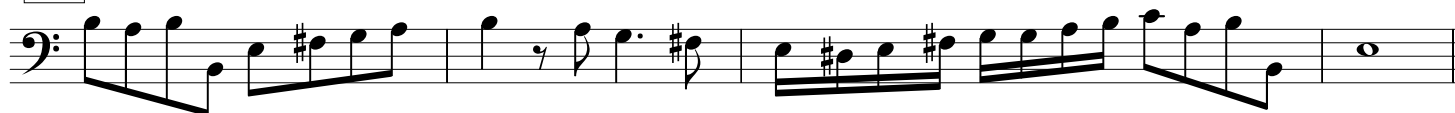
[278]



[281]



[284]



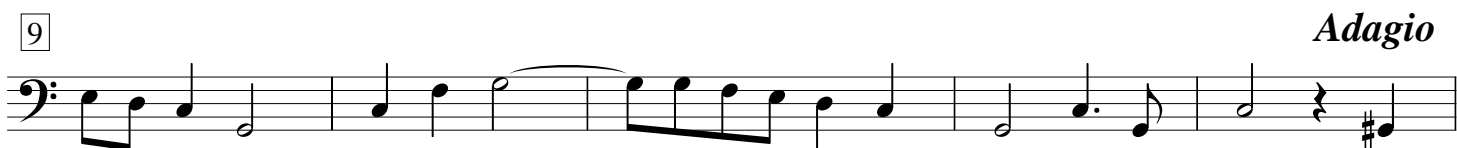
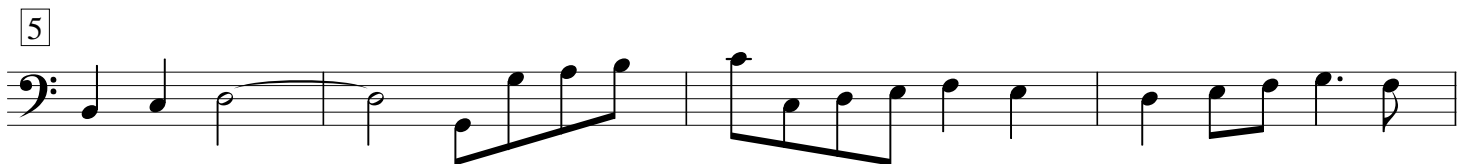
[288] Huic ergo



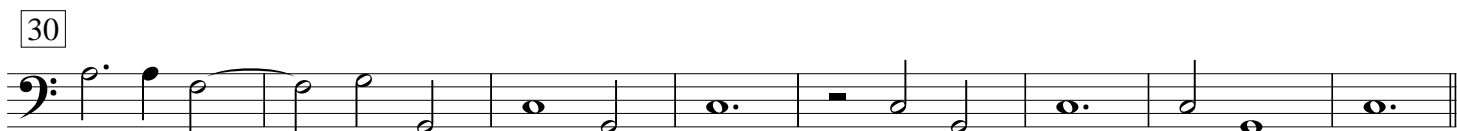
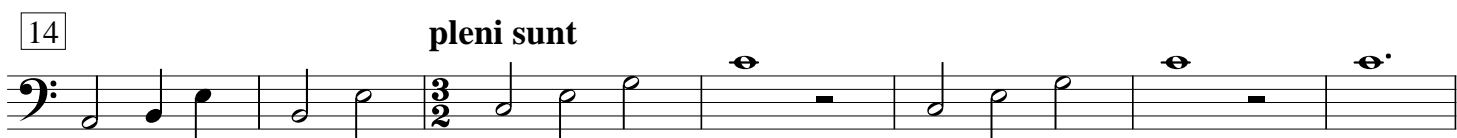
[294]



Sanctus



Adagio



73

A musical staff in bass clef. It begins with two rests, followed by a series of eighth and quarter notes. A triplet of eighth notes is marked with a '3' above it.

83

A musical staff in bass clef showing a continuous melodic line with various note values and rests.

90

Adagio

A musical staff in bass clef. It features a half note with a fermata above it, indicating a slow tempo change.

96 **Benedictus**

A musical staff in bass clef. It starts with a 4-measure rest, followed by a series of quarter and eighth notes.

108

A musical staff in bass clef showing a long melodic line with various note values and rests.

Osanna ut supra

Agnus Dei

A musical staff in bass clef showing the beginning of a melodic line.

5

A musical staff in bass clef showing a melodic line with a slur over several notes.

9

A musical staff in bass clef showing a melodic line with slurs and rests.

13

A musical staff in bass clef showing a melodic line with various note values and rests.

17

A musical staff in bass clef showing a melodic line with various note values and rests.

21

A musical staff in bass clef showing a melodic line with various note values and rests.

Communio

