

# SONATA in D (G.10)

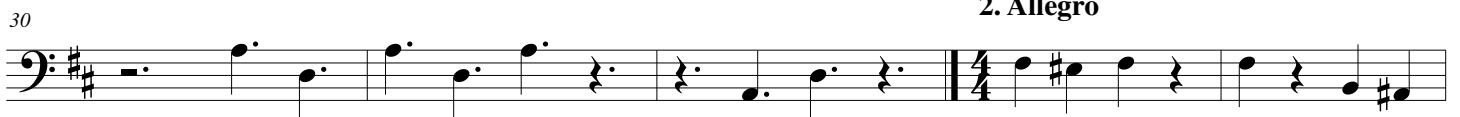
for Trumpet, Strings & Continuo

## Cello

Giuseppe Torelli (1658 - 1709)

Arr. Michel Rondeau

1. Allegro ♩ = 100



2. Allegro



Adagio

3. Allegro



## Torelli - SONATA in D (G.10) - Cello

59



Measures 59-63: Bass clef, D major key signature. The music consists of a sequence of quarter notes and eighth notes with rests, creating a rhythmic pattern.

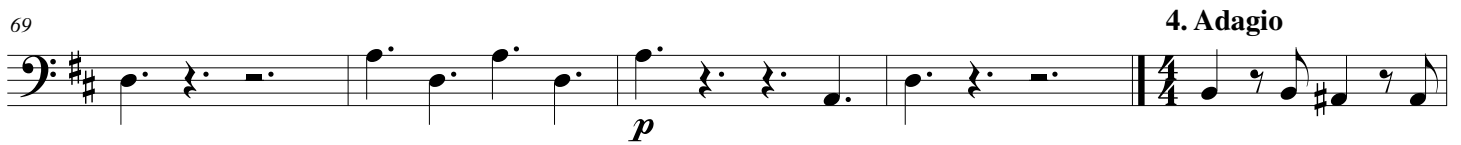
64



Measures 64-68: Bass clef, D major key signature. The music continues with quarter notes and eighth notes, maintaining the rhythmic pattern.

69

4. Adagio



Measures 69-73: Bass clef, D major key signature. Measure 69 starts with a *p* dynamic marking. The music transitions to a 4/4 time signature at the end of measure 73.

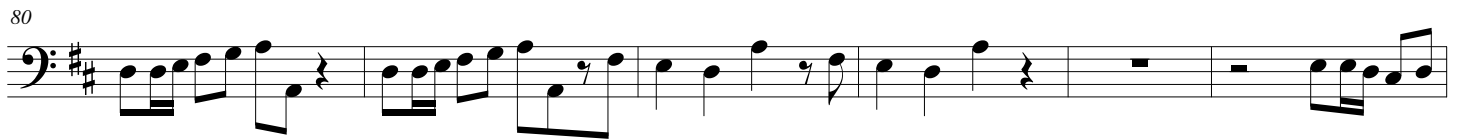
74

5. Allegro



Measures 74-79: Bass clef, D major key signature. Measure 74 starts with a *p* dynamic marking. The music is in common time (C) and features a series of quarter notes with rests.

80



Measures 80-85: Bass clef, D major key signature. The music features eighth-note patterns and quarter notes with rests.

86



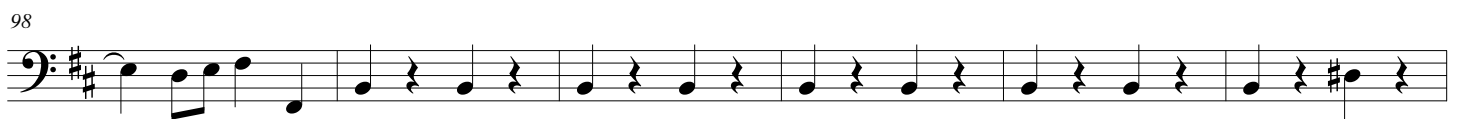
Measures 86-91: Bass clef, D major key signature. The music features eighth-note patterns and quarter notes with rests.

92



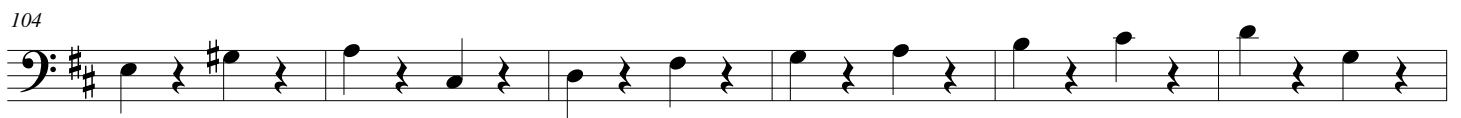
Measures 92-97: Bass clef, D major key signature. The music features eighth-note patterns and quarter notes with rests.

98



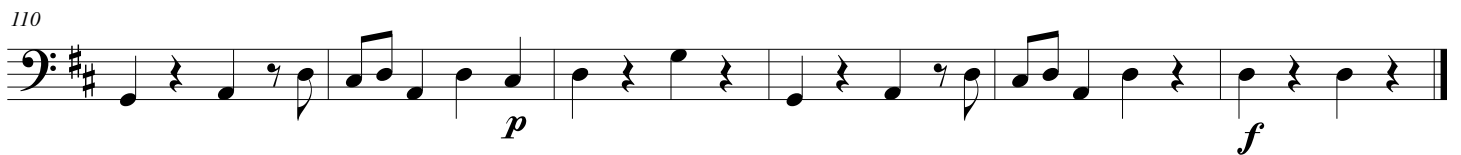
Measures 98-103: Bass clef, D major key signature. The music features eighth-note patterns and quarter notes with rests.

104



Measures 104-109: Bass clef, D major key signature. The music features eighth-note patterns and quarter notes with rests.

110



Measures 110-114: Bass clef, D major key signature. Measure 110 starts with a *p* dynamic marking, and measure 114 ends with a *f* dynamic marking. The music features eighth-note patterns and quarter notes with rests.