

M
4-57
177

Mc 2945

À Madame Angèle CHABERT.

SOUVENIR
de Valfrais

POLKA

POUR PIANO

PAR

THURNER

THEODORE AINÉ.

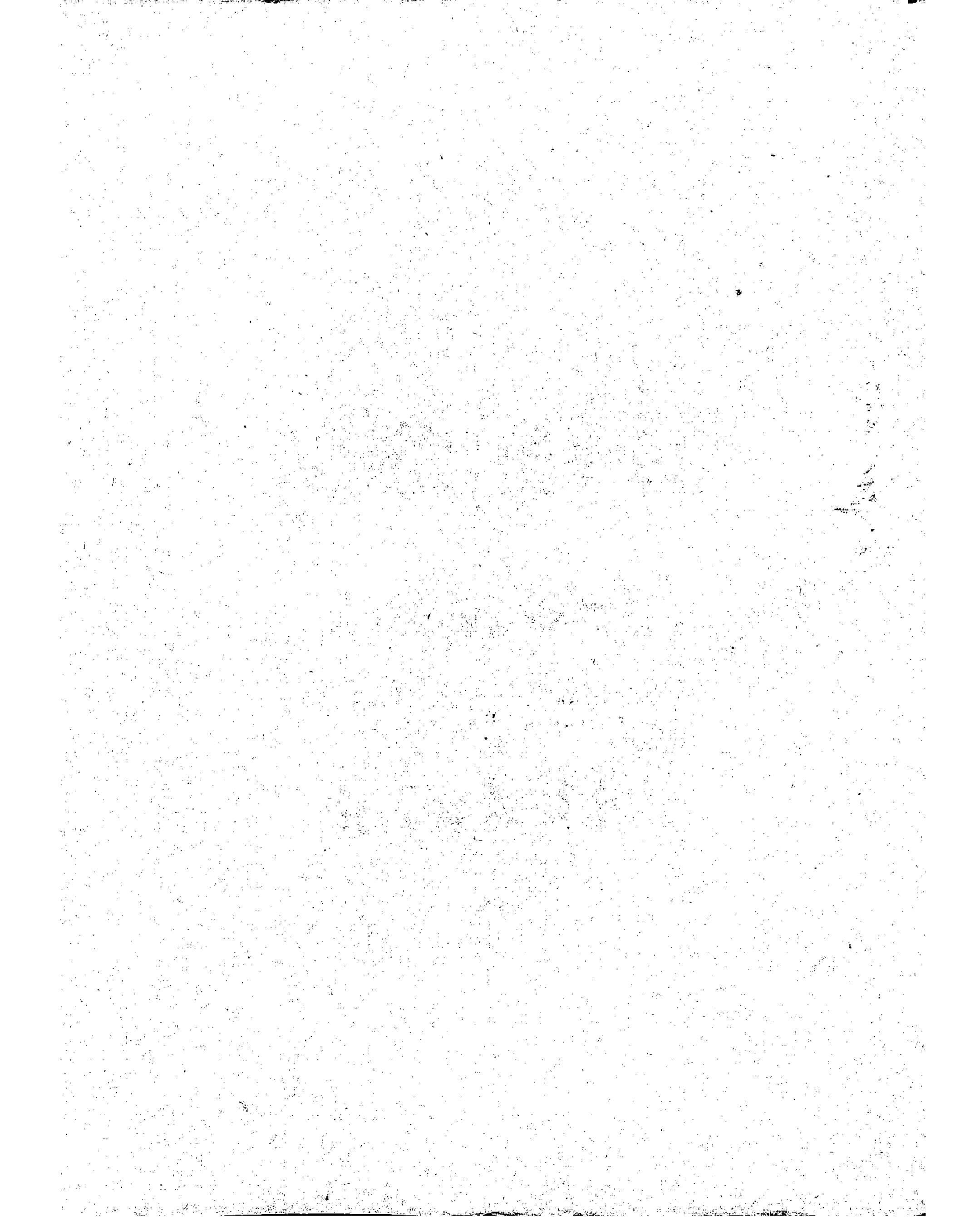
PR. 6^s

PARIS.

Chez Simon RICHALTI éditeur, 4 Boulevard des Italiens au 1^{er}

14073 R.

DEPÔT A LONDRES chez LAFLEUR.



A Madame Angèle CHABERT.

Souvenir
de Valfrais

POLKA



POUR PIANO

PAR

THURNER

THEODORE AINÉ.

Rec. no. 212 W 16

PR: 6^{fr}

PARIS.

Chez Simon RICHAUDT éditeur, 4, Boulevard des Italiens au 1^{er}

14073.R.

DÉPÔT A LONDRES, chez LAFLEUR.

4, Boulevard des Italiens
Simon RICHAUDT
Éditeur de Musique

SOUVENIR DE VALFRAIS.

POLKA

PAR

THURNER,

(THÉODORE AINÉ.)

à Madame Angèle CHABERT.

Moderato. (132)

PIANO.

Pédale.
fp

Ped:

Ped:

Ped:

Ped:

ten:

Ped:

Ped:

Ped:

Ped:

f ten:

Ped:

Ped:

Ped:

Musical notation for the first system, consisting of two staves. The treble staff contains a melodic line with eighth and sixteenth notes, and the bass staff contains a rhythmic accompaniment. The system includes three measures. Pedal markings (*Ped.*) are placed below the bass staff at the beginning of each measure. A diamond-shaped symbol is present below the bass staff in the second and third measures.

Musical notation for the second system, consisting of two staves. The treble staff features a melodic line with a tenuto mark (*ten:*) above the final note. The bass staff has a dynamic marking of *fp* (fortissimo piano) above the first measure and *P* (piano) above the second measure. Pedal markings (*Ped.*) are placed below the bass staff at the beginning of each measure. Diamond-shaped symbols are present below the bass staff in the second and third measures.

Musical notation for the third system, consisting of two staves. The treble staff has a dynamic marking of *fp* above the final note. The bass staff has a dynamic marking of *P* above the first measure. Pedal markings (*Ped.*) are placed below the bass staff at the beginning of each measure. Diamond-shaped symbols are present below the bass staff in the second and third measures.

Pédale.

Musical notation for the fourth system, consisting of two staves. The treble staff has a dynamic marking of *P* above the first measure and a tenuto mark (*ten:*) above the final note. The bass staff has a dynamic marking of *f* (forte) above the final note. Pedal markings (*Ped.*) are placed below the bass staff at the beginning of each measure. Diamond-shaped symbols are present below the bass staff in the second, third, and fourth measures.

Leggiero.

ten: ten: ten: ten: ten:

pp poco à poco cres

Ped: Ped: Ped: Ped: Ped:

ten: ten: ten: ten: ten:

cen do *ff* *pp* *pp* poco à

Ped: Ped: Ped: *ff* *pp* Ped: Ped:

ten: ten: ten: ten: ten:

poco cres cen do *ff*

Ped: Ped: Ped: Ped: Ped: Ped:

f di mi nu en do.

Ped: Ped: Ped: Ped: Ped:

p *fp*

Ped: Ped: Ped: Ped: Ped:

Pédale. *ten:*

P *Ped:* *Ped:* *Ped:* *Ped:* *f* *ten:*

ten: *mf equalmente.* *ten:* *ten:* *ten:* *ten:* *Ped:* *Ped:* *Ped:*

ten: *ten:* *ten:* *ten:* *Ped:* *Ped:*

ten: *ten:* *ten:* *ten:* *Ped:* *Ped:*

ten: *Ped:* *ten:* *Ped:*

ten: *Ped:* *V.S.*

P
ten:
Ped:

Ped: *Ped:*

Ped: *Ped:*

P
1. fois.
Ped:

2. fois.
sempre P
Senza Pedale.

ten: ten: ten: ten: P

Ped. Pedale. fp

Ped. Ped. ten: f

Ped. Ped. ten:

Ped. Ped. ten: f ten: # Ped. V.S.

ten: ten: ten: ten: ten:
pp
ten:

ten: ten: ten: ten: ten:
poco a poco cres cen
ten: ten: ten: ten: ten:
ten: ten: ten: ten: ten:

ten: ten: ten: ten: ten:
do poco a poco
ten: ten: ten: ten: ten:
ff pp ten

ten: ten: ten: ten:
eres cen do
ten: ten: ten: ten:

ten: ff ten: ten: ten: 8a
ten: ff

Con tutta forza.

ff

Ped. *Ped.* *Ped.* *Ped.*

Ped. *Ped.* *sf* *sf*

meno forte *diminuendo*

P *sempre* *diminuendo*

en do *pp* *perendosi* *PPP*

Senza Pédale.

Pédale.

14073.R.

