

Nell' *Barbiere di Siviglia* // (C)

// (C) una voce poco fa // (C)

// (C) *Lavatina* // (C)

// (C) Del *sig.<sup>no</sup> Gioacchino Rossini* // (C)

// (C) *Padotta* // (C)

// (C) *per* // (C)

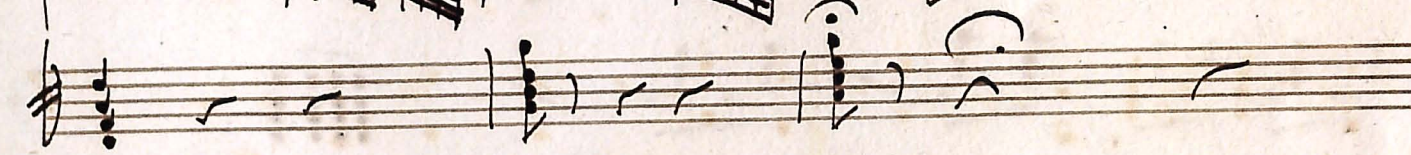
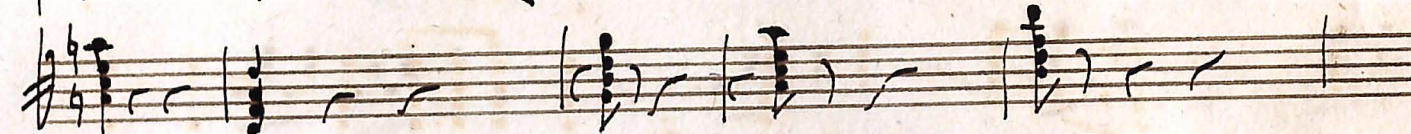
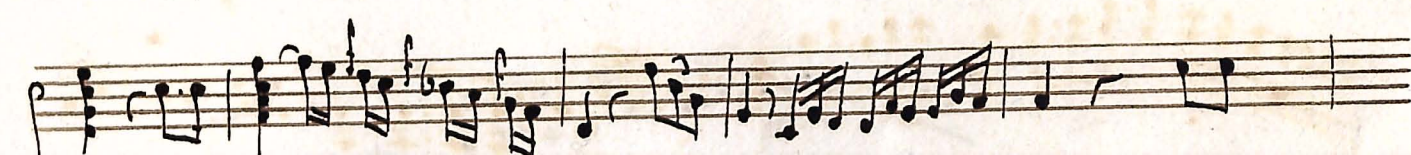
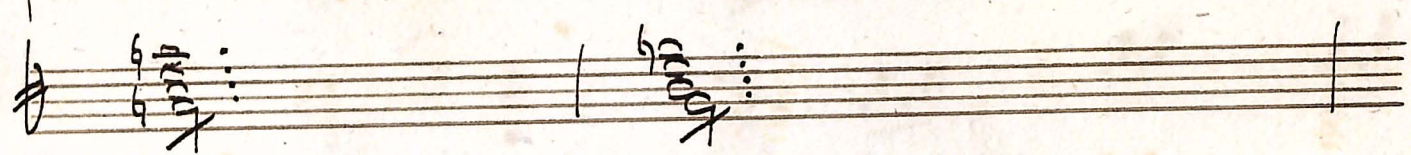
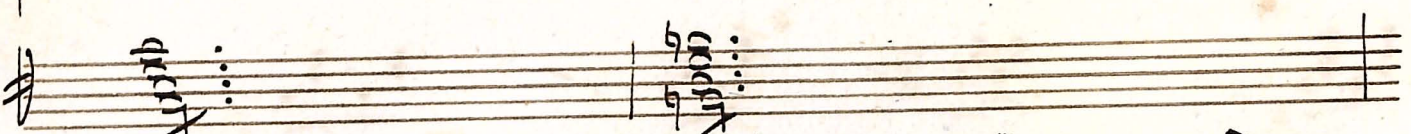
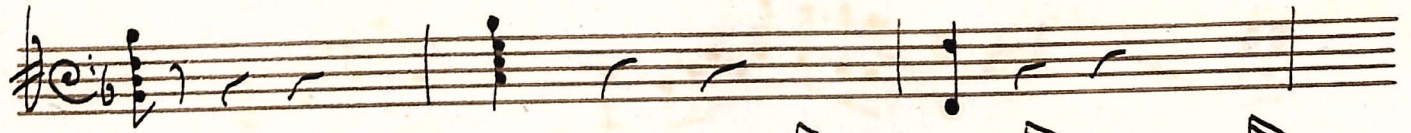
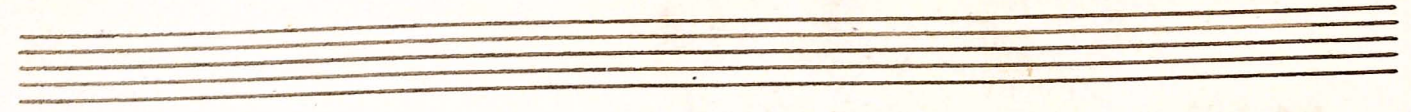
// (C) *Arpa* // (C)

// (C) Dal *sig.<sup>no</sup> Ferdinando Marucci* // (C)

*Sottovoce*

*Andante sostenuto*

This page contains a handwritten musical score for piano, consisting of approximately 12 staves. The notation includes treble and bass clefs, a 6/8 time signature, and various musical symbols such as notes, rests, and accidentals. The score is divided into sections by dynamic markings: *f* (forte) and *pp* (pianissimo). The tempo is marked *Andante sostenuto*. The piece concludes with a *Sottovoce* (pianissimo) instruction. The handwriting is in dark ink on aged, slightly yellowed paper.



Moderato

This page contains a handwritten musical score for piano, consisting of 12 systems of staves. Each system typically includes a treble clef staff and a bass clef staff. The music is written in a style characteristic of 19th-century manuscript notation. The tempo is marked 'Moderato'. The score features a variety of rhythmic patterns, including eighth and sixteenth notes, and rests. Dynamic markings such as 'pp' (pianissimo) are present. The notation includes slurs, ties, and various accidentals. The paper shows signs of age, with some staining and discoloration.

Handwritten musical score for a piece in 6/8 time. The score consists of 12 staves. The first six staves contain the main body of the piece, featuring a melody in the upper voice and accompaniment in the lower voice. The seventh and eighth staves are marked "Canto" and "a piacere". The ninth and tenth staves are marked "Canto" and "a tempo". The piece concludes with a double bar line and a repeat sign.

*V. Vatti presto segue* (C)

This image shows a page of handwritten musical notation on ten staves. The notation is written in black ink on aged, yellowish paper. The first staff begins with a treble clef, a key signature of one sharp (F#), and a time signature of 6/8. A dynamic marking of *pp* (pianissimo) is present in the first measure. The music consists of a variety of note values, including eighth and sixteenth notes, often beamed together in groups. There are several rests throughout the piece. The notation includes stems, beams, and note heads. The piece concludes with a double bar line on the tenth staff. The paper shows signs of age, including some foxing and staining.

This page contains a handwritten musical score consisting of ten staves. The notation is dense and complex, featuring a variety of rhythmic values and chordal structures. The first staff begins with a treble clef and a 6/8 time signature. The music is characterized by frequent sixteenth-note runs and dense clusters of notes, often with slanted stems. The second staff uses a different clef and contains more widely spaced notes with some rests. The third staff returns to a treble clef and continues the dense, rhythmic patterns. The fourth staff uses a bass clef and features a mix of rhythmic values. The fifth staff is in treble clef and shows a transition to a different rhythmic feel. The sixth staff is in bass clef and contains a mix of note values. The seventh staff is in treble clef and features a prominent sixteenth-note pattern. The eighth staff is in bass clef and contains a mix of note values. The ninth and tenth staves are in treble clef and conclude the piece with a final cadence. The paper shows signs of age, including some staining and discoloration.

Three empty musical staves are located at the bottom of the page, below the main body of handwritten notation. Each staff consists of five horizontal lines and is completely blank.

8

38 M  
23

£ 80.000

