

Emmanuele Galea (1790 - 1850)

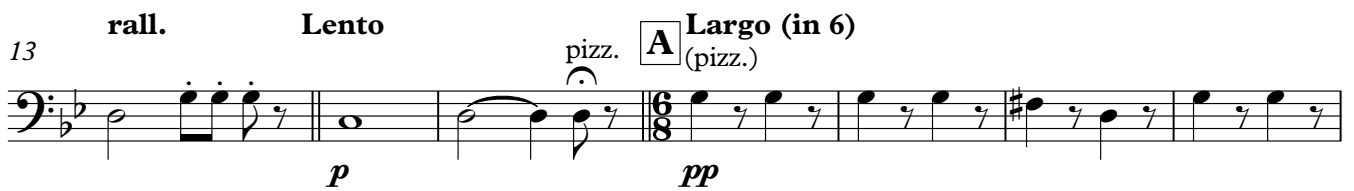
Contrabass

Sinfonia Pastorale

Sonata da Chiesa per Piena Orchestra (c.1825)

Arrangement and Orchestration:
Mauro FARRUGIA (b.1989)

Allegro



- Sinfonia Pastorale -

Orchestra
Contrabass

2

59

pizz.



65



Grave

Largo (in 6)

71

arco

pizz. **C**



78



pp sotto voce

85

D 1mo Tempo (Allegro)



91

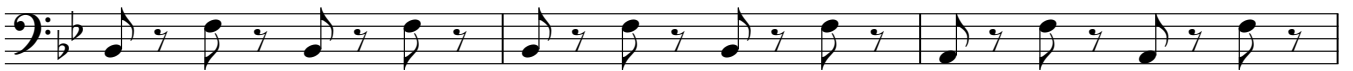


pp subito

96



100



103



pp cresc.

sf sf

107

1. **E**



pp subito

ppp subito

- Sinfonia Pastorale -

Orchestra
Contrabass

3

111

accel.



cresc. poco a poco

115



119



cresc. e accel. più

123

F **Vivace e Ben Marcato** ♩=c.160



fff *con forza*

128



132

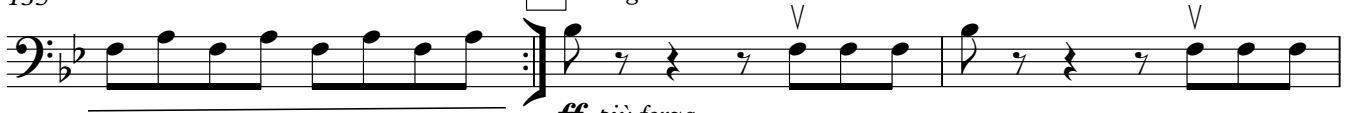


pp *subito*

cresc.

135

G **stringendo**



ff *più forza*

138

Optional Repeat



142

