

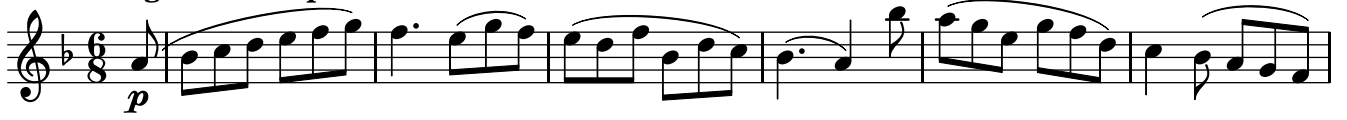
Quatuor Op.4 n°2

Violon I

Hyacinthe JADIN

(1776-1800)

Allegro non tropo



78 *p*

85 *f*

92 *p*

100

108 *f*

116 *ff*

124 *p*

131

138

146

153

160 1

Detailed description: This page contains the Violin I part of a musical score, measures 78 through 160. The music is written in a single staff with a treble clef and a key signature of one flat (B-flat). The time signature is 4/4. The score features a variety of rhythmic patterns, including eighth and sixteenth notes, and rests. Dynamic markings are used throughout: *p* (piano) at measures 78, 92, and 124; *f* (forte) at measures 85 and 108; and *ff* (fortissimo) at measure 116. A repeat sign with first and second endings is present at measure 92. The piece concludes at measure 160 with a final whole note chord and a fermata.

168

175

180

186

194

201

207

214

221

Minuetto

9

17

Fin

Trio

25

31

38

D.C.

Detailed description: This section consists of three staves of music in a 3/4 time signature. The key signature has one flat (B-flat). The first staff (measures 25-30) begins with a repeat sign and contains eighth and sixteenth notes. The second staff (measures 31-37) continues with similar rhythmic patterns, including a trill in measure 35. The third staff (measures 38-38) concludes with a repeat sign and a double bar line, followed by the instruction 'D.C.'.

Adagio molto

1

8

16

23

29

35

42

50

59

65

p

f

p

espressivo

p

dolce

f

p

espressivo

p

dolce

Detailed description: This section is in common time (C) and marked 'Adagio molto'. It spans 65 measures across ten staves. The key signature changes from one flat to two sharps (D major). The first staff (measures 1-7) starts with a piano (*p*) dynamic. The second staff (measures 8-15) features a forte (*f*) dynamic followed by piano (*p*). The third staff (measures 16-22) is marked 'espressivo'. The fourth staff (measures 23-28) includes a piano (*p*) dynamic and a 'dolce' marking. The fifth staff (measures 29-34) has a piano (*p*) dynamic. The sixth staff (measures 35-41) begins with a repeat sign. The seventh staff (measures 42-49) features a forte (*f*) dynamic followed by piano (*p*). The eighth staff (measures 50-58) is marked 'espressivo'. The ninth staff (measures 59-64) includes a piano (*p*) dynamic. The tenth staff (measures 65-65) concludes with a piano (*p*) dynamic and a 'dolce' marking.

Allegro assai

Musical score for Violin I, Allegro assai, measures 6-65. The score is written in treble clef, 2/4 time, and B-flat major. It features various dynamics including *p* (piano) and *f* (forte), and includes slurs, accents, and a repeat sign at the end.

Measures 6-11: *p* dynamics, featuring slurs and accents.

Measures 17-24: *f* dynamics, featuring slurs and accents.

Measures 29-34: *p* dynamics, featuring slurs and accents.

Measures 40-45: *f* dynamics, featuring slurs and accents.

Measures 50-55: *p* dynamics, featuring slurs and accents.

Measures 60-65: *f* dynamics, featuring slurs and accents.

Violin I musical score, measures 71-132. The score is written in treble clef with a key signature of one flat (B-flat). The music features a complex rhythmic pattern, primarily consisting of eighth and sixteenth notes, often grouped in beams. The piece includes various dynamic markings: *p* (piano) and *f* (forte). There are also accents (>) and a trill (*tr*) in measure 82. The score concludes with a double bar line and repeat dots in measure 132.