

# 3 German Dances

Horn

W. A. Mozart  
arr. Jane Thomas

## No. 1

First system: Treble clef, key of D major (two sharps), 3/4 time. The melody begins with a whole rest, followed by a half note D4, quarter note E4, quarter note F#4, quarter note G4, quarter note A4, quarter note B4, quarter note C5, quarter note B4, quarter note A4, quarter note G4, quarter note F#4, quarter note E4, quarter note D4. The first measure is marked *f*.

Second system: Treble clef, key of D major. The melody continues with a whole rest, followed by a half note D4, quarter note E4, quarter note F#4, quarter note G4, quarter note A4, quarter note B4, quarter note C5, quarter note B4, quarter note A4, quarter note G4, quarter note F#4, quarter note E4, quarter note D4. The first measure is marked *p*. The second measure is marked *f*. The piece ends with a double bar line and the word "Fine".

## Trio

First system: Treble clef, key of D major. The melody begins with a whole rest, followed by a half note D4, quarter note E4, quarter note F#4, quarter note G4, quarter note A4, quarter note B4, quarter note C5, quarter note B4, quarter note A4, quarter note G4, quarter note F#4, quarter note E4, quarter note D4. The first measure is marked *f*. The second measure is marked *p*. The piece ends with a double bar line and the word "D.C. al Fine".

## No. 2

First system: Treble clef, key of D major, 3/4 time. The melody begins with a whole rest, followed by a half note D4, quarter note E4, quarter note F#4, quarter note G4, quarter note A4, quarter note B4, quarter note C5, quarter note B4, quarter note A4, quarter note G4, quarter note F#4, quarter note E4, quarter note D4. The first measure is marked *f*.

Second system: Treble clef, key of D major. The melody continues with a whole rest, followed by a half note D4, quarter note E4, quarter note F#4, quarter note G4, quarter note A4, quarter note B4, quarter note C5, quarter note B4, quarter note A4, quarter note G4, quarter note F#4, quarter note E4, quarter note D4. The first measure is marked *f*. The second measure is marked *p*. The piece ends with a double bar line and the word "Fine".

## Trio

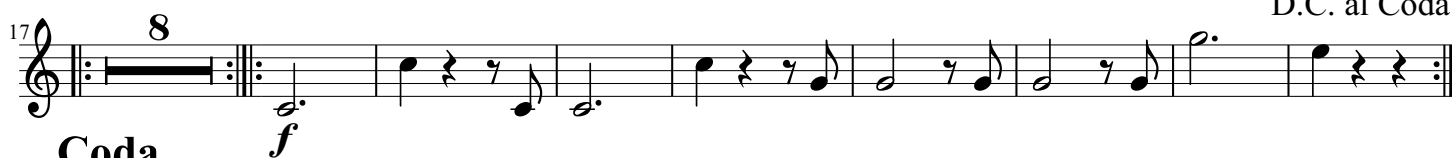
First system: Treble clef, key of D major. The melody begins with a whole rest, followed by a half note D4, quarter note E4, quarter note F#4, quarter note G4, quarter note A4, quarter note B4, quarter note C5, quarter note B4, quarter note A4, quarter note G4, quarter note F#4, quarter note E4, quarter note D4. The first measure is marked *p*.

Second system: Treble clef, key of D major. The melody continues with a whole rest, followed by a half note D4, quarter note E4, quarter note F#4, quarter note G4, quarter note A4, quarter note B4, quarter note C5, quarter note B4, quarter note A4, quarter note G4, quarter note F#4, quarter note E4, quarter note D4. The first measure is marked *f*. The second measure is marked *p*. The piece ends with a double bar line and the word "D.C. al Fine".

# No. 3



## Trio



## Coda

