

# Sonata nona

## Violino I

A. Scarlatti (1660-1725)

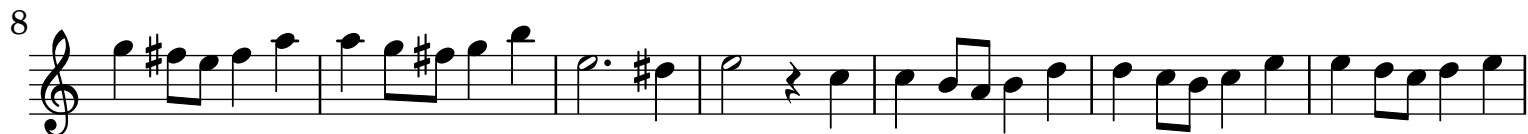
### [1.] All[egr]o

Musical score for the first movement, All[egr]o, in common time (C). The score consists of ten staves of music, numbered 4, 7, 9, 11, 13, 16, 18, and 20. The key signature is one sharp (F#). The music features a variety of rhythmic patterns, including eighth and sixteenth notes, and rests. A dynamic marking of *p* (piano) is present at the beginning of the eighth staff. The piece concludes with a double bar line and repeat dots.

### [2.] Largo

Musical score for the second movement, Largo, in common time (C). The score consists of three staves of music, numbered 4, 7, and 10. The key signature is one sharp (F#). The music is characterized by a slower tempo and features a variety of rhythmic patterns, including eighth and sixteenth notes, and rests. The piece concludes with a double bar line.

## [3.] Fuga



97

105

112

120

*p*

[4.] Largo e piano

7

13

19

25

30

[5.] All[egr]o

9

16

Musical score for Violino I, measures 25 to 125. The score is written in treble clef and features a variety of rhythmic patterns, including eighth and sixteenth notes, and rests. The key signature is one sharp (F#). The score is divided into systems, with measure numbers 25, 34, 42, 50, 59, 67, 75, 84, 92, 101, 109, 117, and 125 marked at the beginning of each system. The notation includes various accidentals (sharps, flats) and dynamic markings (accents).