

Who Likes to Love

William Byrd (c.1540-1623)

Superius (part 1 of 5)

Dow Partbooks (Christ Church, 1580s, Oxford MSS 984-988)

Who likes to love let him take heed, and wot ye

why a-mong the gods it is de - creed

that love shall die. And eve-ry wight that takes his

part shall for-feit each a mour - ning heart. And eve - ry

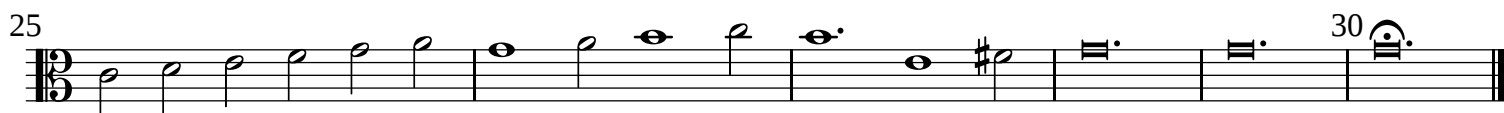
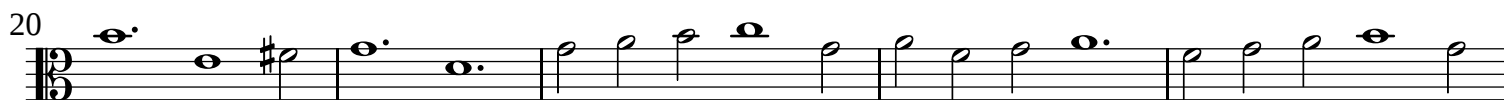
wight that takes his part shall for-feit each a mour-ning heart.

Who Likes to Love

William Byrd (c.1540-1623)

Medius (part 2 of 5)

Dow Partbooks (Christ Church, 1580s, Oxford MSS 984-988)



Who Likes to Love

William Byrd (c.1540-1623)

Medius (part 2 of 5)

Dow Partbooks (Christ Church, 1580s, Oxford MSS 984-988)

5

10

15

20

25

30

Who Likes to Love

William Byrd (c.1540-1623)

Contra (part 3 of 5)

Dow Partbooks (Christ Church, 1580s, Oxford MSS 984-988)

5

10

15

20 1

25

1 30

Who Likes to Love

William Byrd (c.1540-1623)

Contra (part 3 of 5)

Dow Partbooks (Christ Church, 1580s, Oxford MSS 984-988)

5

10

15

20 1

25

30

Who Likes to Love

William Byrd (c.1540-1623)

Tenor (part 4 of 5)

Dow Partbooks (Christ Church, 1580s, Oxford MSS 984-988)

5

10

15

20

25

30

Who Likes to Love

William Byrd (c.1540-1623)

Tenor (part 4 of 5)

Dow Partbooks (Christ Church, 1580s, Oxford MSS 984-988)

5

10

15

20

25

30

Who Likes to Love

William Byrd (c.1540-1623)

Bassus (part 5 of 5)

Dow Partbooks (Christ Church, 1580s, Oxford MSS 984-988)

5

10

15

20

25

30