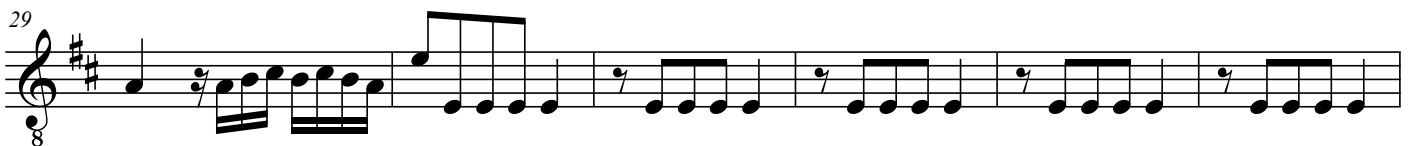
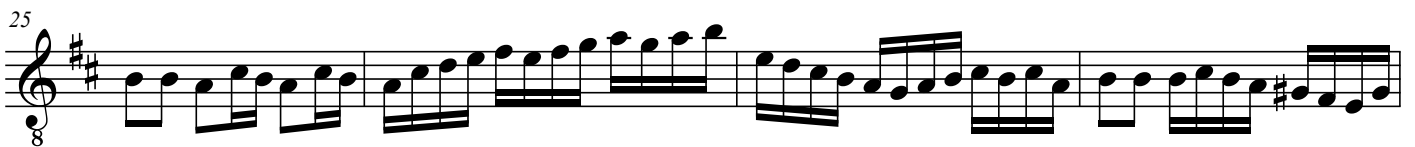
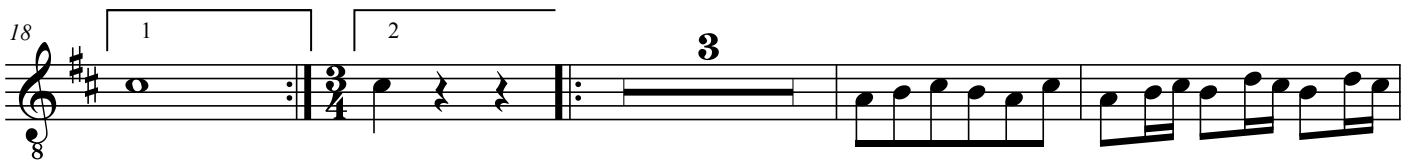


Ouverture "La Bizarre"

G. Ph. Telemann
TWV55 : G 2

1. (Ouverture)

Bearbeitung für 4 Gitarren
Anton Höger



2
41

47

53

59

65

70

75

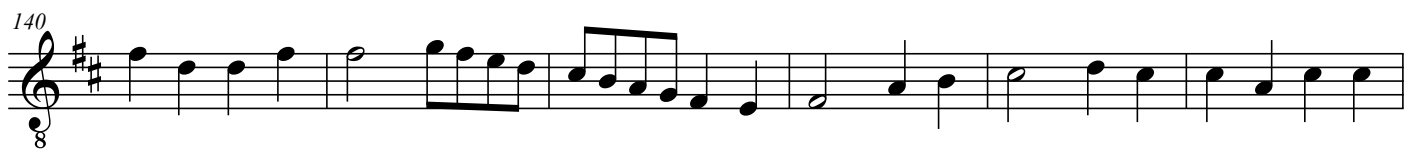
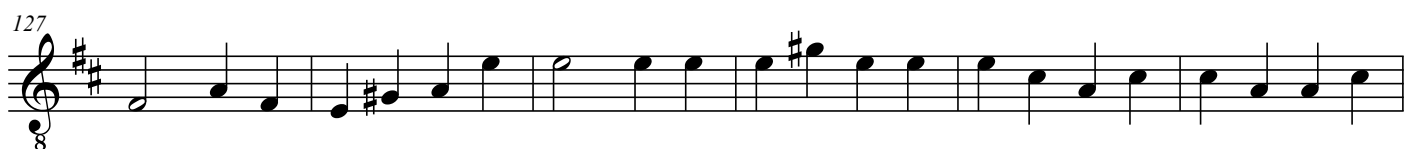
79

83

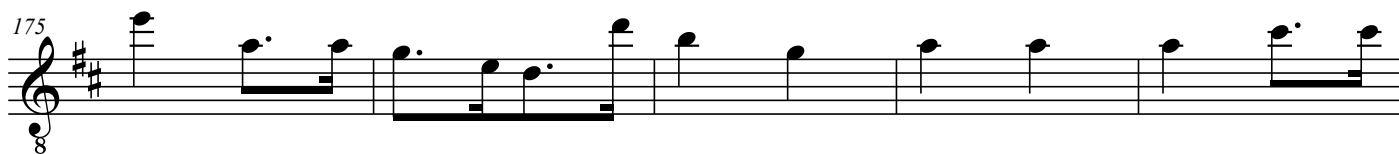
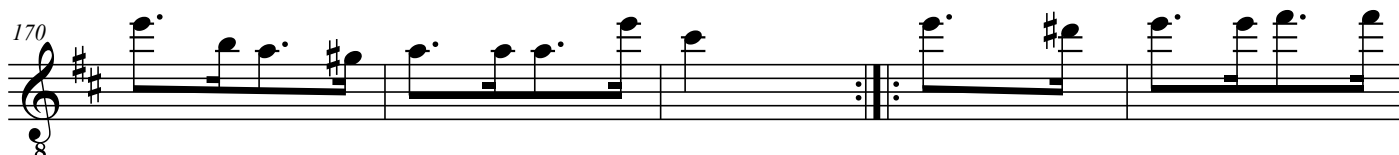
2. Courante



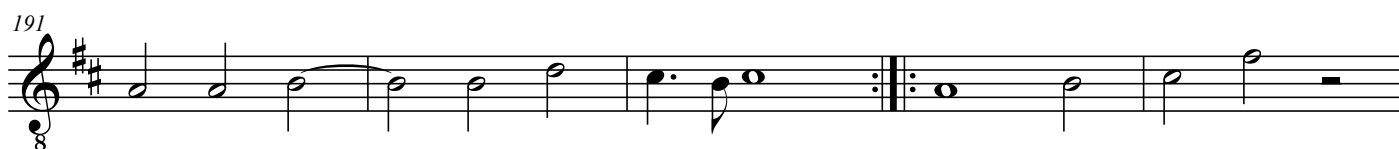
3. Gavotte en Rondeau



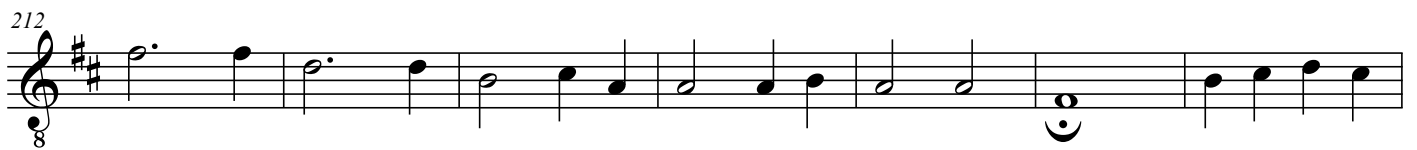
4. Branle

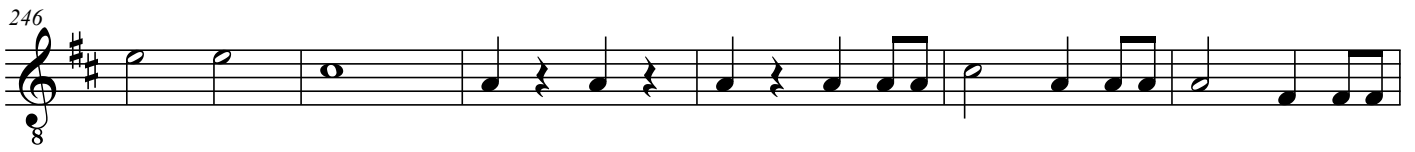


5. Sarabande



6. Fantasie





7. Menuet

(1. Menuet)

274

281

289

2. Menuet Doucement

297

305

313

321

Menuet 1. Da capo

8. Rossignol

