

Suite La Bizarre [TWV 55:G2]

Taille

G. Ph. Telemann (1681-1767)

[1.] Ouverture - La Bizarre

7

13

20

27

32

38

44

51

59

66

71

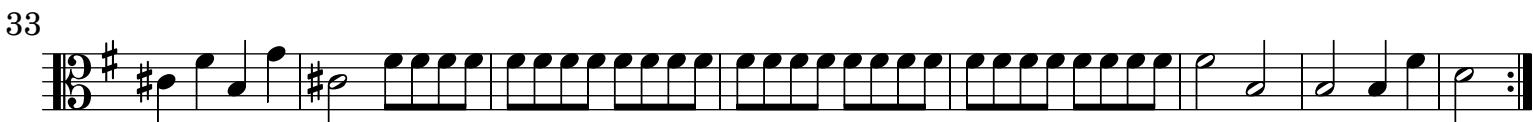
77

81

[2.] Courante



[3.] Gavotte en Rondeau



[4.] Branle

Musical score for [4.] Branle, consisting of three staves of music in 2/4 time with a key signature of one sharp (F#). The first staff begins with a treble clef and a common time signature, followed by a key signature change to one sharp. The second and third staves continue the melody in the same key and time signature.

[5.] Sarabande

Musical score for [5.] Sarabande, consisting of three staves of music in 3/2 time with a key signature of one sharp (F#). The first staff begins with a treble clef and a common time signature, followed by a key signature change to one sharp. The second and third staves continue the melody in the same key and time signature.

[6.] Fantasie

Musical score for [6.] Fantasie, consisting of six staves of music in common time with a key signature of one sharp (F#). The first staff begins with a treble clef and a common time signature, followed by a key signature change to one sharp. The second and third staves continue the melody in the same key and time signature. The fourth and fifth staves continue the melody in the same key and time signature. The sixth staff continues the melody in the same key and time signature.

43



51



[7.] Menuet 1



[8.] Rossignol

