



*Corno Scto*

57

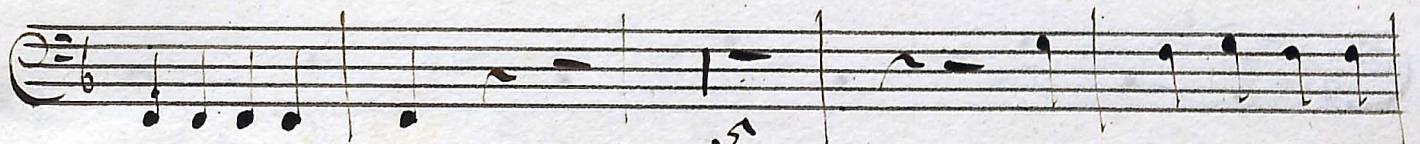
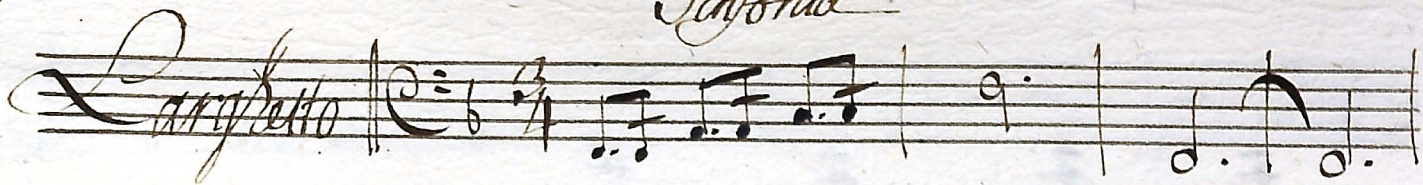


Messa a n. - Voci con Violini

Sinfonia

Corno Secondo

1



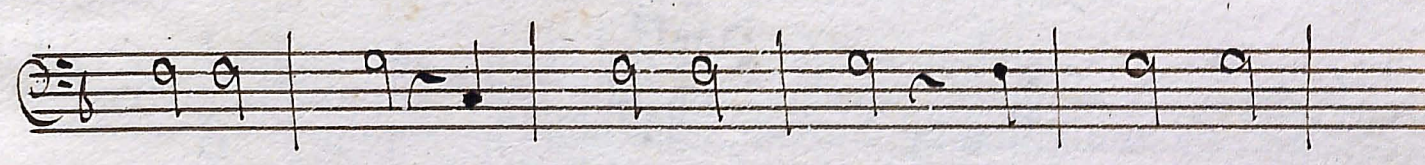
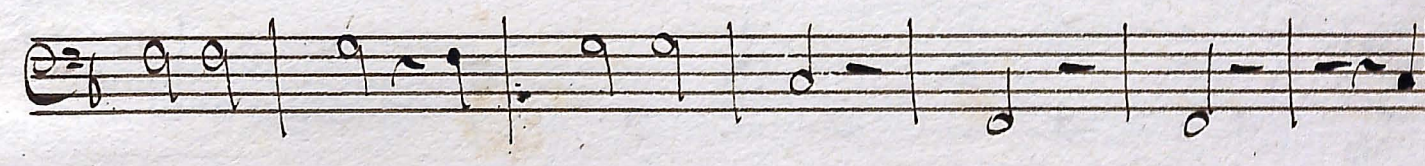
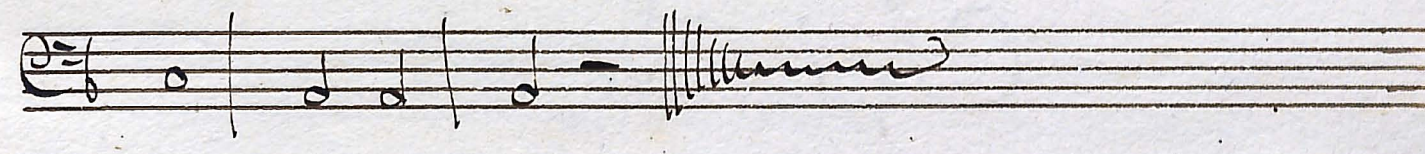
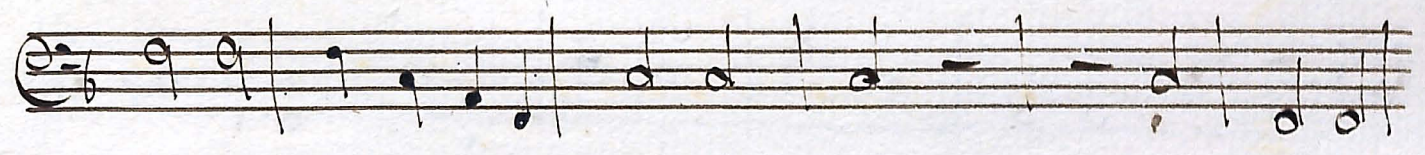
S 20/5

1

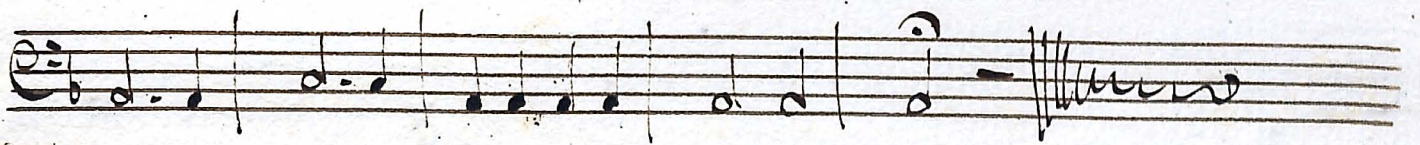


A handwritten musical score on ten staves. The notation is in a single system, likely for a keyboard instrument. The first staff begins with a treble clef and a key signature of one flat. The music consists of a series of chords and melodic lines. The second staff features a sequence of chords, some with multiple notes. The third staff contains a series of chords with a slur over them. The fourth staff shows a melodic line with a slur and a fermata. The fifth staff continues the melodic line. The sixth staff features a melodic line with a slur and a fermata. The seventh staff contains a melodic line with a slur and a fermata. The eighth staff shows a melodic line with a slur and a fermata. The ninth staff contains a melodic line with a slur and a fermata. The tenth staff features a melodic line with a slur and a fermata.

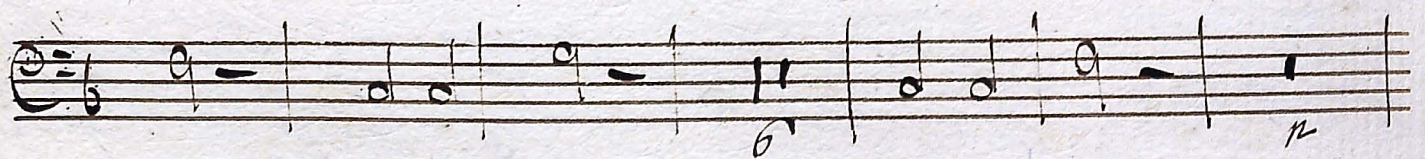




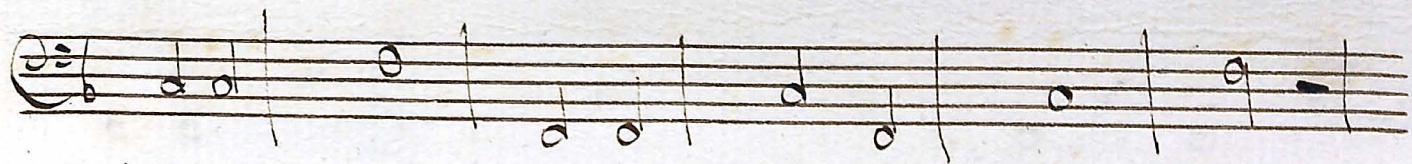




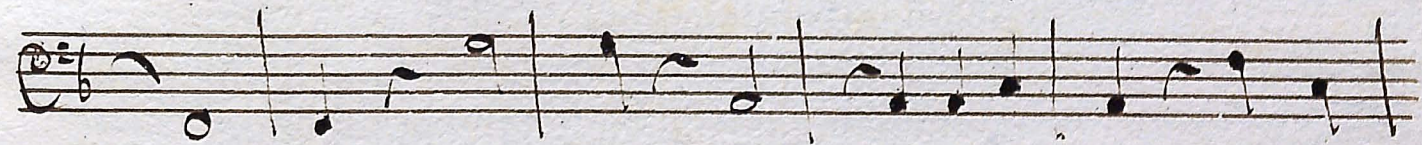
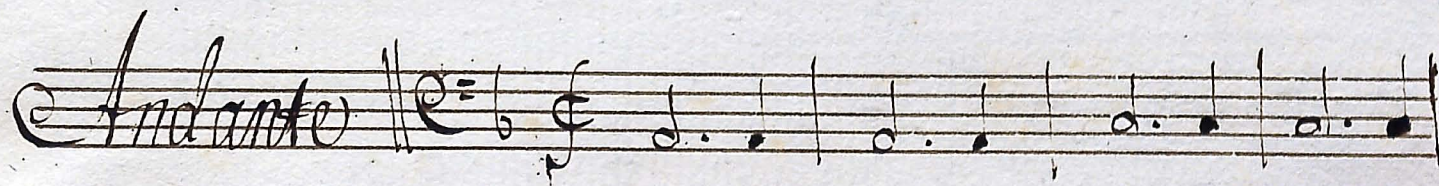
*Christe Facet*







*Gloria*





Handwritten musical score on eight staves. The notation includes various note values (quarter, eighth, and sixteenth notes), rests, and bar lines. There are some ink stains on the first staff. The eighth staff ends with a double bar line and a decorative flourish.

*Gratias agimus Tace Inno al Domino Deus*



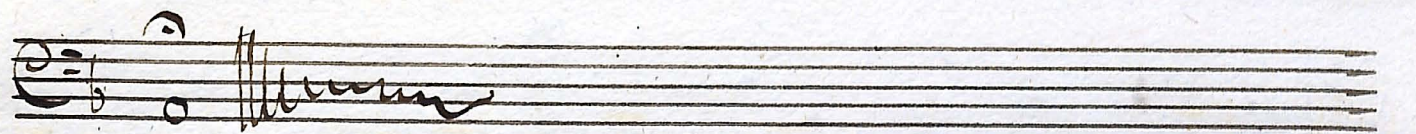
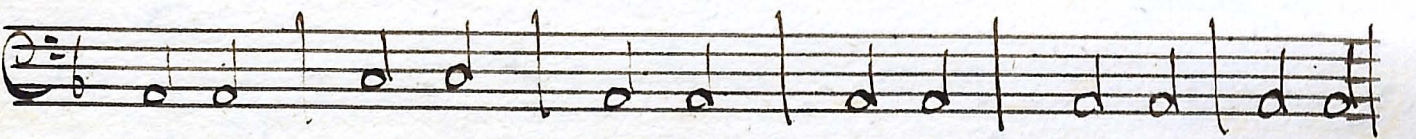
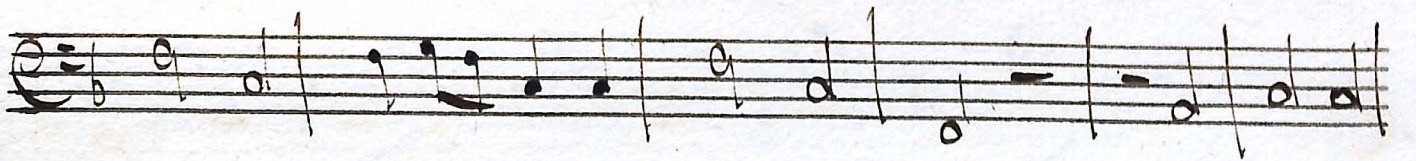
*Allegro* *Domine Deus*  $\text{C} \frac{6}{8}$   $\text{III}$   $\text{10}$

*Qui tollis* *Tacet* *Uno al Quoniam*

*Largo*  $\text{C} \frac{6}{8}$

*Allo*





*Segue il Credo*



*Credo*





*Et incarnata est. Facio. Inno al. resurrexit*



*Sequo et in spiritu*



*Allagio* Et in spiritu 9

*Alto* Et vita venturi 6





*Fine del Credo*

