



*Iste Confessor*

*a 4. Voci*

*del Sig: Bartol: Felici*

42.



All. moder.

Sto confessor

Stromf.

Di Barb. Felici

Sto confessor Domini colentes qui pie laudant populi

542/1

2

Handwritten musical score for the first system, consisting of five staves. The top two staves contain melodic lines, the middle staff is empty, and the bottom two staves contain a bass line. The lyrics are written across the bottom two staves.

*orbe) Eac die letus miris beatus Eac die letus miris beatus* *Suprema* *Suprema* *San =*

Handwritten musical score for the second system, consisting of five staves. The top two staves contain melodic lines, the middle staff is empty, and the bottom two staves contain a bass line. The lyrics are written across the bottom two staves.

*Suprema* *Suprema* *San =*

*Deus* *laudans De =* *des* *laudans De =*

*us* *laudans De =* *us* *laudans De =*

Handwritten musical notation on three staves. The first staff begins with a treble clef and a key signature of one sharp (F#). The music consists of various note values, including eighth and sixteenth notes, and rests.

Handwritten musical notation on seven staves with Latin lyrics in cursive script. The lyrics are: *des res*, *Sobria duxit sine labo vita*, *Sobria duxit sine labo*, *Sobria duxit sine labo vita sine labo vita*, *Qui pius prudens humilis pudicus*, and *Sobria duxit sine labo vita donec lux*.





*Cuius ob prestant meritum, frequentes quoque sanam iacu: ero membra viribus*

*morbi domitis Sa: lu: fi: te: sti: tuentur*      *Restitu: un: tur*      *Restitu:*

6

Vni

Tenore

un = bus.

No: per sine illi Cro: rus obsequentia)

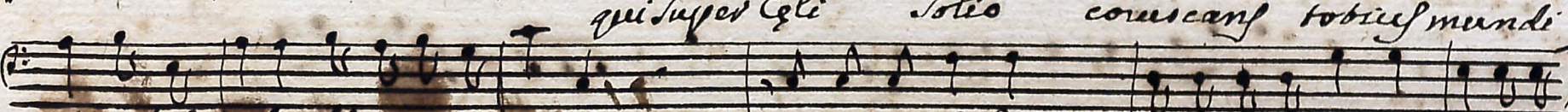
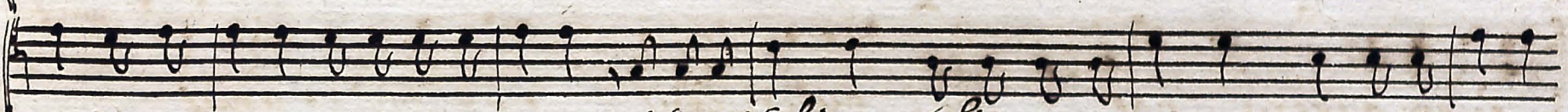
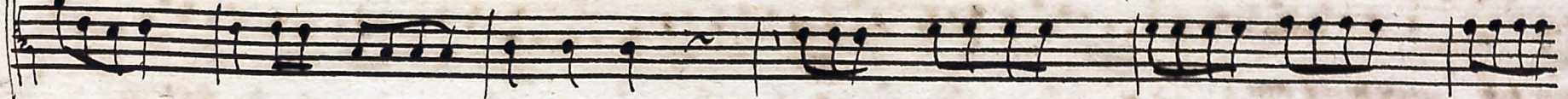
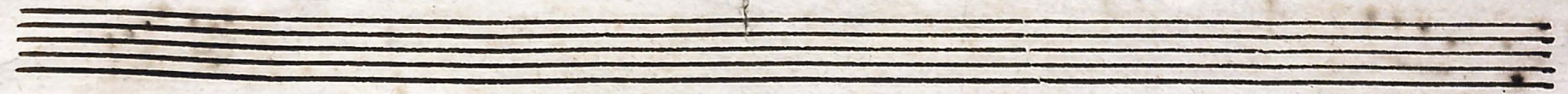
concinis laudib' cele: besque palma' cele: besque palmas ut piis eius precibus in =

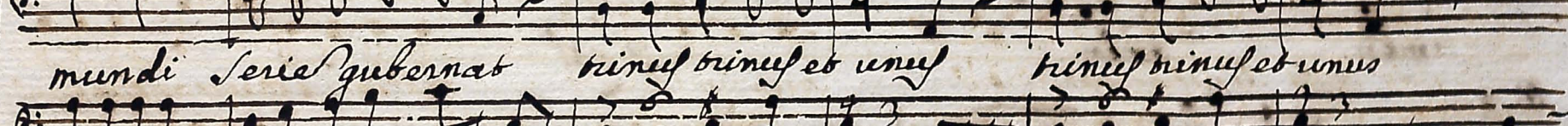
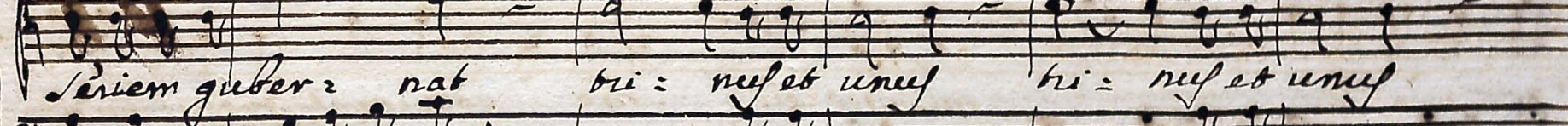
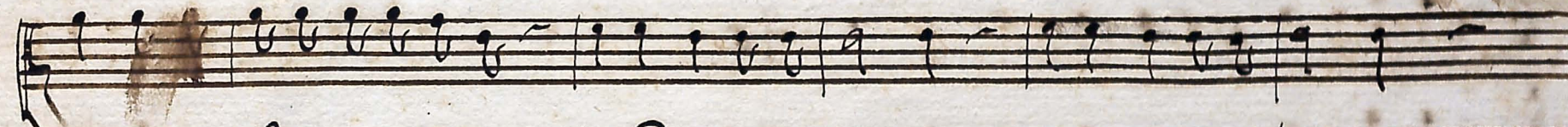
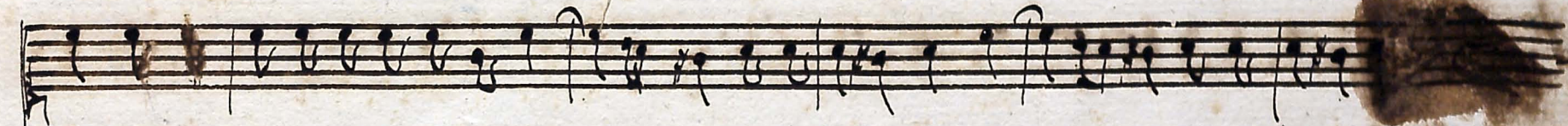
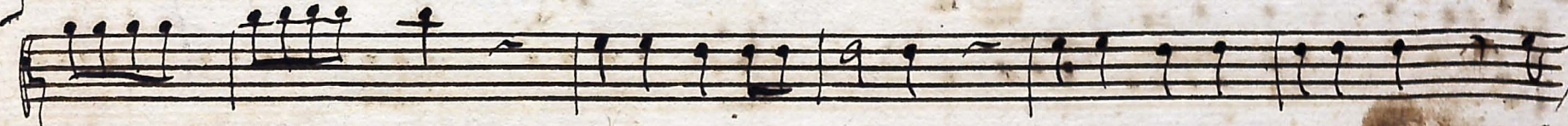
Musical score with vocal line and lute accompaniment. The vocal line includes the Latin text "Veni in uenimus om" followed by a series of equals signs and the word "no".

Musical score with vocal line and lute accompaniment. The vocal line includes the Latin text "Bris" and "Bris".

Musical score with vocal line and lute accompaniment. The vocal line includes the Latin text "E = = uel omneff E = = uel." and the instruction "Segue Tabi".







*Seriem gubernat tri: nus et unus tri: nus et unus*

*mundi Serie gubernat trinus trinus et unus trinus trinus et unus*

Handwritten musical score on ten staves. The score includes various musical notations such as notes, rests, and clefs. The word "Finis" is written in cursive on the second and eighth staves. The word "amen" is written in cursive on the eighth staff. A large bracket on the left side groups the first seven staves.