

SONATE DA CAMERA A TRE

Violino II

Sonata I

Antonio Vivaldi, Op. 1

PRELUDIO

Grave



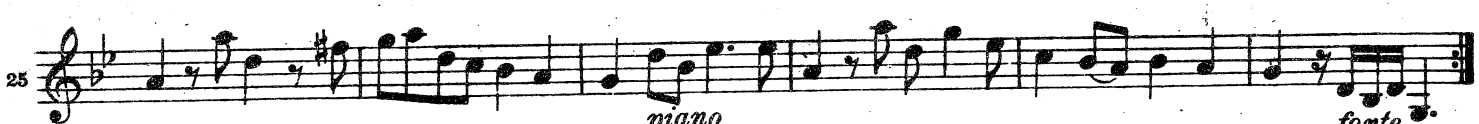
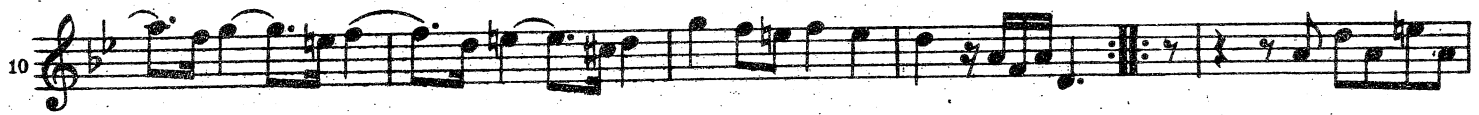
Vello. \overline{p} .



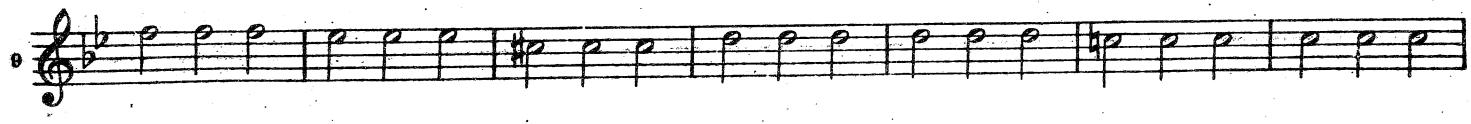
ALLEMANDA

Allegro

Viol. I



Adagio



Edwin F. Kalmus
Publisher of music
New York, N.Y.

Violine II

CAPRICCIO

Allegro

Viol. I

Musical score for Capriccio, Violin I part, measures 1-21. The score is written on four staves in G major and 3/4 time. It features a rhythmic melody with eighth and sixteenth notes. Measure numbers 7, 14, and 21 are indicated on the left. Dynamics markings 'piano' and 'forte' appear at the bottom of the fourth staff.

GAVOTTA

Allegro

Musical score for Gavotta, measures 1-8. The score is written on one staff in G major and 3/4 time. It features a simple, rhythmic melody with eighth and sixteenth notes. Measure numbers 1, 5, and 8 are indicated on the left.

Sonata II

Grave

Viol. I

Musical score for Sonata II, Violin I part, measures 1-14. The score is written on four staves in G major and 3/4 time. It features a slow, melodic line with some triplet markings. Measure numbers 5, 10, and 14 are indicated on the left. A 'piano' dynamic marking appears at the bottom of the fourth staff.

CORRENTE

Allegro

Musical score for Corrente, measures 1-9. The score is written on two staves in G major and 3/4 time. It features a rhythmic melody with eighth and sixteenth notes. Measure numbers 9 and 14 are indicated on the left.

19

26

35

piano

45

forte

GIGA
Allegro
Vell.

5

10

16

21

27

piano

32

GAVOTTA
Allegro
Viol. I

5

Sonata III

Adagio



ALLEMANDA

Allegro

Viol. I

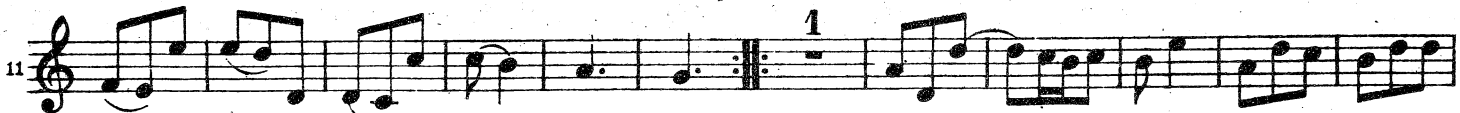


Adagio



SARABANDA

Allegro



piano

Sonata IV

Largo

Allegro

Adagio

ALLEMANDA

Allegro

SARABANDA

Largo

GIGA

Violino II

Allegro

5

11

16

20

24

PRELUDIO

Sonata V

Largo

Viol. I

5

10

ALLEMANDA

Presto

7

14

20

piano

CORRENTE

Violino II

Allegro

Viol. I

Musical score for Corrente, Violino II, measures 1-47. The score is written in treble clef with a key signature of one flat (B-flat) and a 2/4 time signature. It begins with a treble clef and a key signature of one flat. The tempo is marked 'Allegro'. The score consists of six staves of music. The first staff starts with a treble clef and a key signature of one flat. The second staff is marked with the number '8'. The third staff is marked with the number '15'. The fourth staff is marked with the number '27'. The fifth staff is marked with the number '38'. The sixth staff is marked with the number '47' and ends with a double bar line and repeat dots. The word 'piano' is written below the sixth staff.

GAVOTTA

Presto

Musical score for Gavotta, measures 1-7. The score is written in treble clef with a key signature of one flat (B-flat) and a 2/4 time signature. It begins with a treble clef and a key signature of one flat. The tempo is marked 'Presto'. The score consists of two staves of music. The first staff starts with a treble clef and a key signature of one flat. The second staff is marked with the number '7' and ends with a double bar line and repeat dots.

PRELUDIO

Sonata VI

Grave

Viol. I

Musical score for Preludio, Sonata VI, Violino I, measures 1-9. The score is written in treble clef with a key signature of two sharps (D major) and a common time signature (C). It begins with a treble clef and a key signature of two sharps. The tempo is marked 'Grave'. The score consists of four staves of music. The first staff starts with a treble clef and a key signature of two sharps. The second staff is marked with the number '3'. The third staff is marked with the number '6'. The fourth staff is marked with the number '9' and ends with a double bar line and repeat dots.

CORRENTE
Allegro

Adagio

ALLEMANDA
Allegro