

HÉRODIADE

Opéra de J. MASSENET

FANTAISIE-MOSAÏQUE

E. TAVAN

1^{er} CORNET

And^{te} mod^{te}
en LA

1^{re} PARTIE

Andante

Tuba

Presséz

Presséz un peu

Presséz

FICORNET

6 Répt. Fl. 8-12 1

Musical staff with notes and dynamics. It begins with a six-measure rest, followed by a flourish for the flute. The staff contains several measures of music with dynamics like *f* and *mf*. A measure rest for 12 measures is indicated at the end.

Soli B Andantino 6 mf

Musical staff labeled 'Soli' and 'B Andantino'. It features a six-measure rest followed by music with a dynamic of *f*, then *mf*. A six-measure rest is also present.

ff

Musical staff with music featuring a dynamic of *ff* and a triplet of eighth notes.

ff

Musical staff with music featuring a dynamic of *ff* and a triplet of eighth notes.

Andante ff f

Musical staff labeled 'Andante'. It features music with dynamics of *ff* and *f*, and a four-measure rest.

And^{te} mod^{to} 2 Cor p

Musical staff labeled 'And^{te} mod^{to}' and 'Cor'. It features music with a dynamic of *p* and a two-measure rest.

2 Cor 1 f p

Musical staff labeled 'Cor' and '1'. It features music with dynamics of *f* and *p*, and a two-measure rest.

p mf dim.

Musical staff with music featuring dynamics of *p*, *mf*, and *dim.*

rall. f

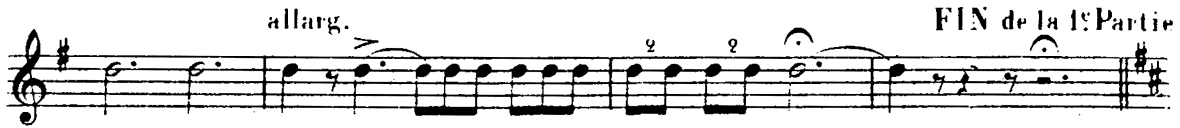
Musical staff labeled 'rall.'. It features music with a dynamic of *f* and a three-measure rest.

f p mf f

Musical staff with music featuring dynamics of *f*, *p*, *mf*, and *f*.

Presser C All^o mod^{to} 4 5 mf

Musical staff labeled 'Presser' and 'C All^o mod^{to}'. It features music with a dynamic of *mf* and rests for 4 and 5 measures.



1^{er} CORNET

E All: maestoso brillante

Changez en **SI^b**

2^e PARTIE

F Mod^{to}

And^{te} religioso

Répl.

mf *dim.* *pp* *rall.* Un peu plus lent 2 1 3

f *rall.* *Andantino* *p* 5 *G All^o* *f*

mf *p* *mf* *All^o mod^o* 1 *rall.*

6 *Plus vite* *p* *cresc.* *rall.* *1^{er} T^o* *mf*

1 *rall.* *p* *mf* *f* 1 *All^o mod^o* 2 *Solo* *mf*

cresc. *rall.* 3 *f*

a T^o *mf* *cresc.* *f* *dim.*

mf

cresc. *rall.* 3 *f* *a T^o*

rall. 3 *a T^o* *Plus vite* *f*

dim. 5

1^{er} CORNET

allarg.

f *cresc.*

Presssez allarg. FIN ad lib. de la 2^e Partie

ff

I Andante en SI^b 1

5^e PARTIE

p

p

p *mf*

Plus vite Cor

p

Presssez

cresc. *p* *cresc.*

rall. a T^o I^o

f *p*

rall. Presssez 2 rall.

cresc. *dim. p* *f dim.*