

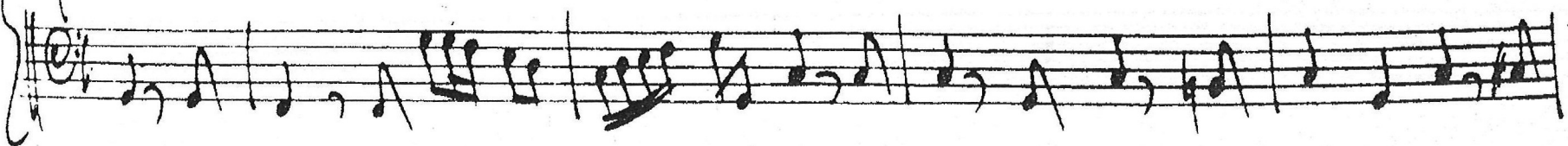
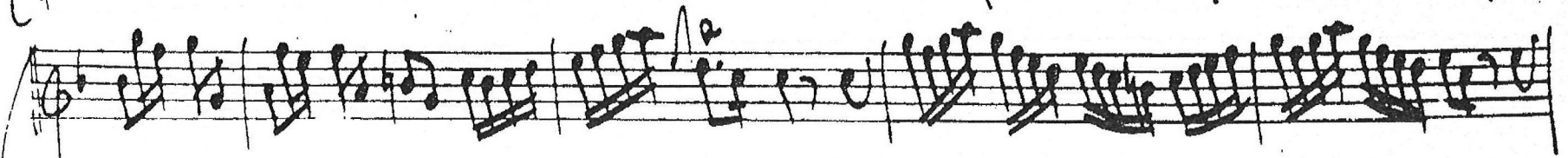
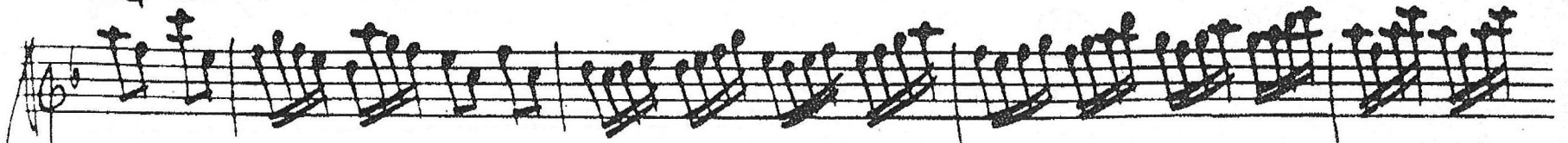
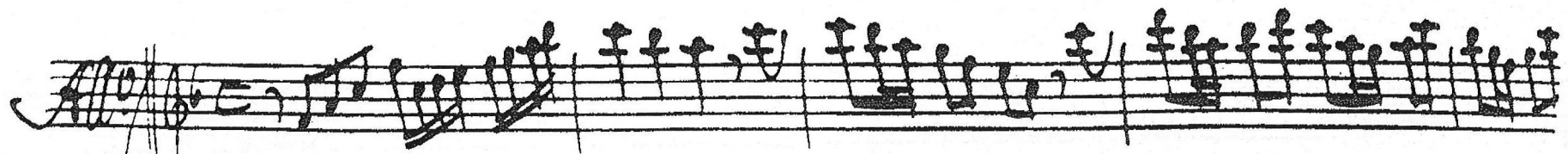
Contra a Flauto Alto e Basso

Det. Sig. Sib. Battista Lomij

*Bagio*

A handwritten musical score for a piece titled "Bagio". The score is written on six staves, organized into three systems of two staves each. The top system consists of a treble clef staff and a bass clef staff, both in 4/4 time. The second system also consists of a treble clef staff and a bass clef staff. The third system consists of a treble clef staff and a bass clef staff. The music is written in a cursive, handwritten style. The treble clef staves feature complex rhythmic patterns, including many sixteenth and thirty-second notes, often beamed together. The bass clef staves provide a harmonic accompaniment with simpler rhythmic values. The piece concludes with a double bar line at the end of the final staff.

Handwritten musical score on four staves. The first two staves contain dense musical notation with many notes and stems. The third and fourth staves contain fewer notes, with the word "Segue: All." written in cursive on the fourth staff.



The image shows a handwritten musical score on ten staves. The notation is dense and complex, featuring a variety of rhythmic patterns and melodic lines. The top and bottom staves contain dense, multi-measure rests and complex rhythmic figures, while the middle staves contain more melodic and harmonic lines. The handwriting is fluid and characteristic of a composer's sketch. The score is written in black ink on white paper. The top staff has a treble clef and a common time signature. The second staff has a bass clef and a common time signature. The third staff has a treble clef and a common time signature. The fourth staff has a bass clef and a common time signature. The fifth staff has a treble clef and a common time signature. The sixth staff has a bass clef and a common time signature. The seventh staff has a treble clef and a common time signature. The eighth staff has a bass clef and a common time signature. The ninth staff has a treble clef and a common time signature. The tenth staff has a bass clef and a common time signature. The score is written in a style that suggests it is a working draft or a composer's sketch.

Handwritten musical score for a piece titled "Adagio". The score is written on ten staves, organized into five systems of two staves each. The notation includes treble and bass clefs, a 3/4 time signature, and various musical symbols such as notes, rests, and dynamic markings like *f* and *ff*. The handwriting is fluid and characteristic of a composer's draft.



A handwritten musical score consisting of seven systems of staves. Each system contains two staves, likely representing a grand staff (treble and bass clefs). The notation is dense and includes various rhythmic values, accidentals, and articulation marks. The first six systems are filled with complex musical notation, while the seventh system concludes with a double bar line and the word "Fina" written in a cursive hand.