

MENUET I-II in B-flat MAJOR (5)

for Three Oboes, Bassoon, Strings, Cembalo & Continuo
(from: Overture - Suite in B-flat Major, TWV 55:B10)

Score(02':37")

(Urtext)

Georg Philipp Telemann (1685 - 1767)

Ed. Michel Rondeau

Menuet I ♩ = 120

Oboe 1

Oboe 2

Oboe 3

Bassoon

Harpsichord

Violin I

Violin II

Viola

Double Bass

MENUET I-II in B-flat MAJOR (5) - Telemann - Score

7 1. 2.

Ob. 1

Ob. 2

Ob. 3

Bsn.

7 1. 2.

Hpschd.

7 1. 2.

Vln. I

Vln. II

Vla.

D.B.

tr

MENUET I-II in B-flat MAJOR (5) - Telemann - Score

13

Ob. 1

Ob. 2

Ob. 3

Bsn.

Hpschd.

13

Vln. I

Vln. II

Vla.

D.B.

13

Detailed description: This is a page of a musical score for a Minuet in B-flat Major by Georg Philipp Telemann. The page is numbered 3 at the top right and 13 at the beginning of each staff. The score is arranged in systems. The first system contains four staves: Ob. 1, Ob. 2, Ob. 3, and Bsn. The second system contains two staves: Hpschd. (Harpichord) and a lower staff (likely Cello or Double Bass). The third system contains four staves: Vln. I, Vln. II, Vla. (Viola), and D.B. (Double Bass). The music is written in B-flat major (two flats) and 3/4 time. The key signature is B-flat major. The time signature is 3/4. The score shows the first six measures of the piece, starting from measure 13. The notation includes various note values, rests, and accidentals. The Hpschd. part is mostly silent, indicated by a horizontal line with a bar above it. The other instruments have active parts with various rhythmic patterns and melodic lines.

MENUET I-II in B-flat MAJOR (5) - Telemann - Score

19

Ob. 1

Ob. 2

Ob. 3

Bsn.

Hpschd.

Vln. I

Vln. II

Vla.

D.B.

MENUET I-II in B-flat MAJOR (5) - Telemann - Score

26 1. 2. Menuet II

Ob. 1

Ob. 2

Ob. 3

Bsn.

Hpschd.

Vln. I

Vln. II

Vla.

D.B.

Detailed description: This page of a musical score for Menuet II in B-flat Major by Georg Philipp Telemann, measures 26-30. The score is arranged for a full orchestra. The key signature is two flats (B-flat major), and the time signature is 3/4. The piece is in common form, featuring a first ending (1.) and a second ending (2.). The woodwinds (Ob. 1, 2, 3, and Bsn.) and strings (Vln. I, Vln. II, Vla., and D.B.) play the main melody and accompaniment. The keyboard part (Hpschd.) is mostly silent, with some accompaniment in the bass clef. The score includes repeat signs and first/second ending markings. The time signature changes to 3/4 at the beginning of the second ending.

MENUET I-II in B-flat MAJOR (5) - Telemann - Score

Ob. 1

Ob. 2

Ob. 3

Bsn.

Hpschd.

Vln. I

Vln. II

Vla.

D.B.

33

33

33

MENUET I-II in B-flat MAJOR (5) - Telemann - Score

Ob. 1

Ob. 2

Ob. 3

Bsn.

Hpschd.

Vln. I

Vln. II

Vla.

D.B.

40

40

40

MENUET I-II in B-flat MAJOR (5) - Telemann - Score

Ob. 1

Ob. 2

Ob. 3

Bsn.

Menuet I-D.C.

Hpschd.

Menuet I-D.C.

Vln. I

Vln. II

Vla.

D.B.

Menuet I-D.C.

Menuet I-D.C.

MENUET I-II in B-flat MAJOR (5)

for Three Oboes, Bassoon, Strings, Cembalo & Continuo
(from: Overture - Suite in B-flat Major, TWV 55:B10)

Oboe 1

Menuet I ♩ = 120

Georg Philipp Telemann (1685 - 1767)

Ed. Michel Rondeau

The musical score for Oboe 1 consists of two minuetts. Menuet I is in 3/4 time, B-flat major, and begins with a treble clef. It features a series of eighth and sixteenth notes, with a repeat sign at measure 8. Menuet II is in 3/4 time, B-flat major, and begins with a treble clef. It features a series of eighth and sixteenth notes, with a repeat sign at measure 24. The score is written on a single staff with a key signature of two flats and a common time signature of 3/4.

Menuet I-D.C.

MENUET I-II in B-flat MAJOR (5)

for Three Oboes, Bassoon, Strings, Cembalo & Continuo
(from: Overture - Suite in B-flat Major, TWV 55:B10)

Oboe 2

Georg Philipp Telemann (1685 - 1767)

Ed. Michel Rondeau

Menuet I ♩ = 120

1.

9 2.

17 *tr*

26 1. 2. Menuet II

34

42

49

Menuet I-D.C.

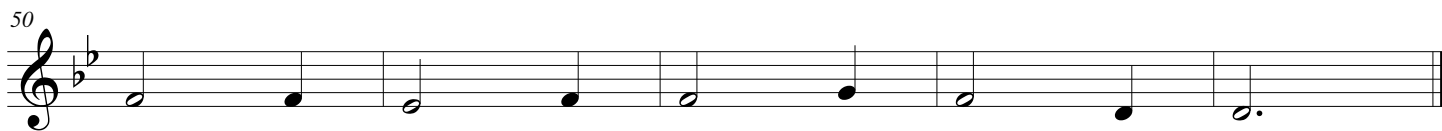
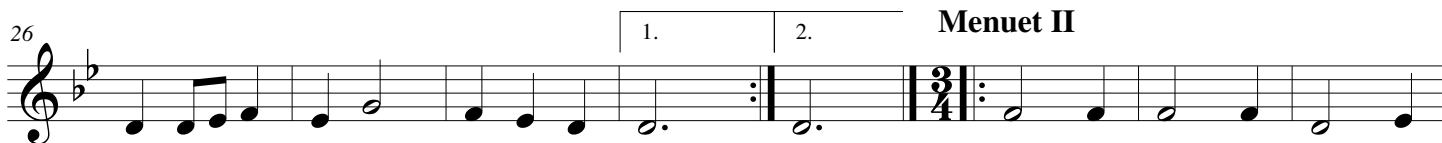
MENUET I-II in B-flat MAJOR (5)

for Three Oboes, Bassoon, Strings, Cembalo & Continuo
(from: Overture - Suite in B-flat Major, TWV 55:B10)

Oboe 3

Georg Philipp Telemann (1685 - 1767)
Ed. Michel Rondeau

Menuet I ♩ = 120



Menuet I-D.C.

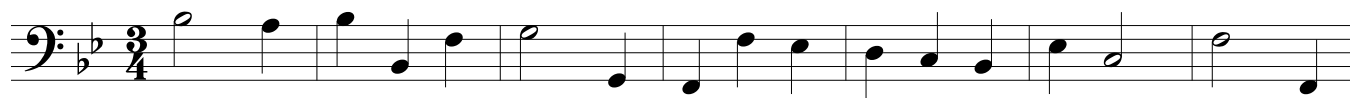
MENUET I-II in B-flat MAJOR (5)

for Three Oboes, Bassoon, Strings, Cembalo & Continuo
(from: Overture - Suite in B-flat Major, TWV 55:B10)

Bassoon

Georg Philipp Telemann (1685 - 1767)
Ed. Michel Rondeau

Menuet I ♩ = 120



MENUET I-II in B-flat MAJOR (5)

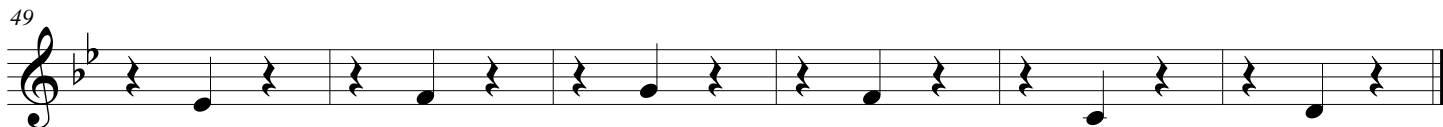
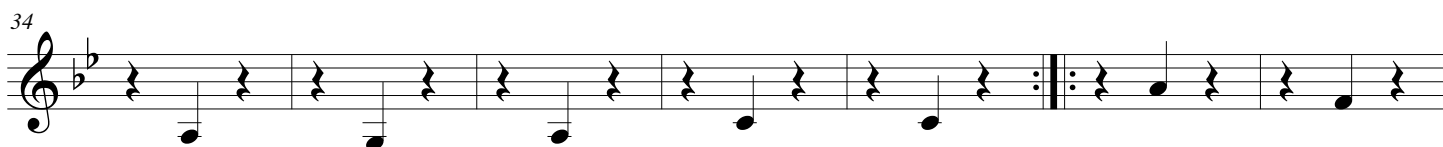
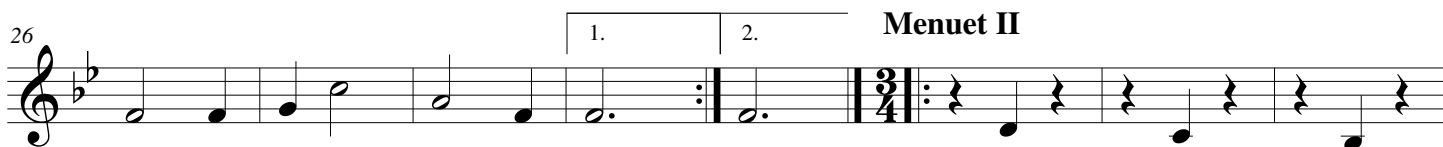
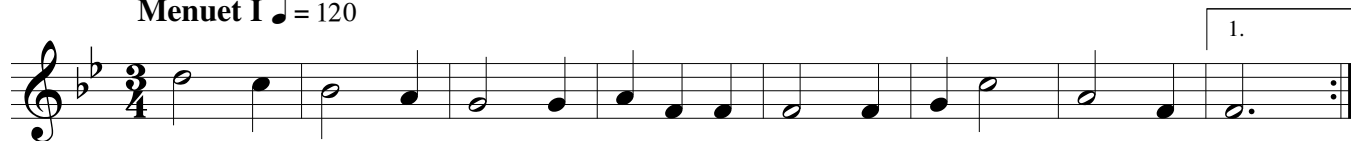
for Three Oboes, Bassoon, Strings, Cembalo & Continuo
(from: Overture - Suite in B-flat Major, TWV 55:B10)

Violin II

Georg Philipp Telemann (1685 - 1767)

Ed. Michel Rondeau

Menuet I ♩ = 120



Menuet I-D.C.

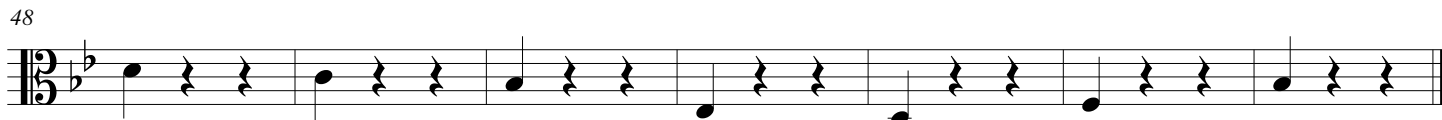
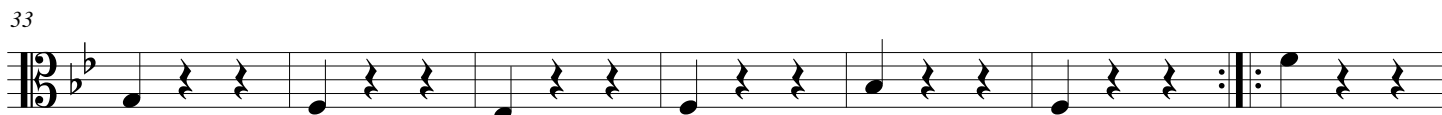
MENUET I-II in B-flat MAJOR (5)

for Three Oboes, Bassoon, Strings, Cembalo & Continuo
(from: Overture - Suite in B-flat Major, TWV 55:B10)

Viola

Georg Philipp Telemann (1685 - 1767)
Ed. Michel Rondeau

Menuet I ♩ = 120



Menuet I-D.C.

MENUET I-II in B-flat MAJOR (5)

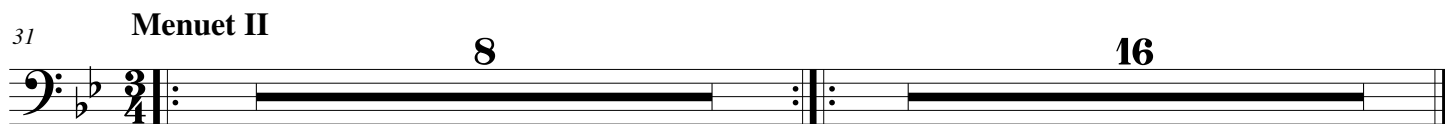
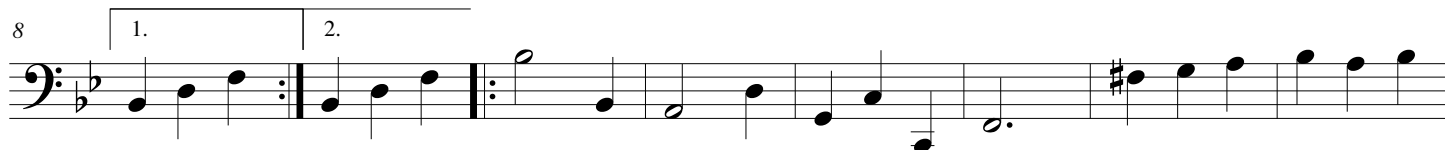
for Three Oboes, Bassoon, Strings, Cembalo & Continuo
(from: Overture - Suite in B-flat Major, TWV 55:B10)

Double Bass

Georg Philipp Telemann (1685 - 1767)

Ed. Michel Rondeau

Menuet I ♩ = 120



Menuet I-D.C.

MENUET I-II in B-flat MAJOR (5)

for Three Oboes, Bassoon, Strings, Cembalo & Continuo
(from: Overture - Suite in B-flat Major, TWV 55:B10)

Harpsichord

Georg Philipp Telemann (1685 - 1767)

Ed. Michel Rondeau

Menuet I ♩ = 120

The image displays a musical score for Harpsichord, consisting of two minuetts. The first system shows the beginning of Menuet I, marked with a treble clef, a bass clef, and a 3/4 time signature. The key signature is B-flat major. The melody is in the bass clef, and the right hand has rests. The second system shows measures 8-15, with a first ending (1.) and a second ending (2.). The third system shows measures 16-23, continuing the melody. The fourth system shows measures 24-30, with a first ending (1.) and a second ending (2.). The fifth system shows the beginning of Menuet II, marked with a treble clef, a bass clef, and a 3/4 time signature. The key signature is B-flat major. The melody is in the bass clef, and the right hand has rests. The score includes fingering numbers (6, 7, #) and dynamic markings (6, 7, #, 6). The piece concludes with a double bar line and the instruction "Menuet I-D.C." (Da Capo).