

1315

18.

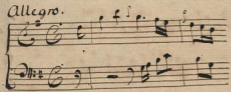
346

*Donata*  
*per il Violino Solo*

*del Sig. Franc. Ponda*



*Allegro.*



2  
Molto Allegro

Violino Solo.

This is a handwritten musical score for a violin solo, titled "Molto Allegro". The score is written on 12 systems, each consisting of two staves. The notation is dense and complex, featuring a variety of rhythmic values, including sixteenth and thirty-second notes, as well as rests. The key signature is one sharp (F#), and the time signature is common time (C). The music is characterized by rapid passages and intricate melodic lines, typical of a virtuosic solo piece. The handwriting is clear and legible, with some corrections and markings throughout the score.

This page contains a handwritten musical score for piano, organized into ten systems of staves. The notation is dense and includes various musical elements:

- System 1:** Features a treble clef and a key signature of one flat. It begins with a series of sixteenth-note chords in the right hand, followed by a melodic line in the left hand.
- System 2:** Continues the melodic and harmonic development with similar rhythmic patterns.
- System 3:** Shows a change in texture with more complex rhythmic figures in both hands.
- System 4:** Includes a section with a key signature change to two flats and a shift in the bass clef.
- System 5:** Features a section with a key signature of two flats and a prominent bass line.
- System 6:** Continues the piece with a key signature of two flats.
- System 7:** Shows a key signature change to one flat and a more active right hand.
- System 8:** Continues the piece with a key signature of one flat.
- System 9:** Features a key signature change to one flat and a section with a key signature of one flat.
- System 10:** Ends with a key signature of one flat and a section with a key signature of one flat. The word "Fatti." is written in the right hand, and "pp." is written in the left hand.

4  
*Largo.*

A handwritten musical score for a piece titled "Largo". The score is written on ten systems of two staves each, with a treble clef on the upper staff and a bass clef on the lower staff. The key signature is one sharp (F#) and the time signature is 3/8. The music is characterized by a slow tempo and features a variety of rhythmic patterns, including eighth and sixteenth notes, often grouped with slurs. There are several dynamic markings, including *pp* (pianissimo) and *sp* (sforzando), and some articulation marks like accents. The notation is dense and expressive, typical of a Romantic-era manuscript.

A handwritten musical score consisting of six staves. The notation includes treble and bass clefs, a key signature of one sharp (F#), and a 4/4 time signature. The music features complex rhythmic patterns, including sixteenth and thirty-second notes, and various articulations such as slurs and accents. The score concludes with a double bar line and a fermata-like flourish.

*Alto.*

6  
*Allegretto.*

A handwritten musical score on aged paper, consisting of ten systems of two staves each. The music is written in a cursive, historical style. The first system begins with a treble clef, a key signature of one sharp (F#), and a time signature of 8/8. The notation includes various rhythmic values such as eighth and sixteenth notes, often beamed together in groups. There are frequent use of slurs and ties across measures. The score contains several repeat signs, including double bar lines with dots and first/second endings. The paper shows signs of age, with some staining and a slightly uneven texture.

Handwritten musical notation on a single staff, featuring a treble clef and a key signature of one sharp (F#). The notation includes a series of sixteenth-note runs and rests, ending with a double bar line.

Handwritten musical notation on a single staff, featuring a treble clef and a key signature of one sharp (F#). The notation includes a series of sixteenth-note runs and rests, ending with a double bar line.

Handwritten musical notation on a single staff, featuring a treble clef and a key signature of one sharp (F#). The notation includes a series of sixteenth-note runs and rests, ending with a double bar line.

Handwritten musical notation on a single staff, featuring a treble clef and a key signature of one sharp (F#). The notation includes a series of sixteenth-note runs and rests, ending with a double bar line.

Handwritten musical notation on a single staff, featuring a treble clef and a key signature of one sharp (F#). The notation includes a series of sixteenth-note runs and rests, ending with a double bar line.

Handwritten musical notation on a single staff, featuring a treble clef and a key signature of one sharp (F#). The notation includes a series of sixteenth-note runs and rests, ending with a double bar line.

Handwritten musical notation on a single staff, featuring a treble clef and a key signature of one sharp (F#). The notation includes a series of sixteenth-note runs and rests, ending with a double bar line.

Handwritten musical notation on a single staff, featuring a treble clef and a key signature of one sharp (F#). The notation includes a series of sixteenth-note runs and rests, ending with a double bar line.

Handwritten musical notation on a single staff, featuring a treble clef and a key signature of one sharp (F#). The notation includes a series of sixteenth-note runs and rests, ending with a double bar line.

18

Vertical text along the right edge, possibly bleed-through from the reverse side of the page.

