

# MENUET en Sol MINEUR

(de: Concerts Royaux, Premier Concert, No.6 - 1722)

Score (01':30")

pour Trompette et Orgue

François Couperin (1668 - 1733)

Arr. Michel Rondeau

Moderato ♩ = 100

Trumpet in C

Organ

C Tpt.

Org.

C Tpt.

Org.



# MENUET en Sol MINEUR

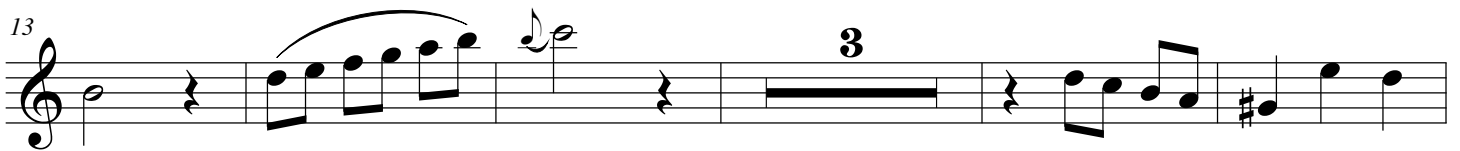
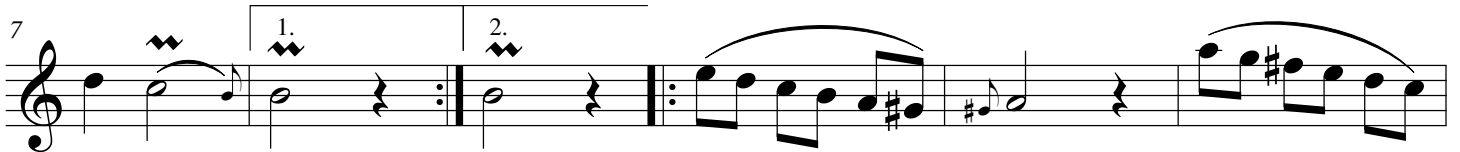
(de: Concerts Royaux, Premier Concert, No.6 - 1722)  
pour Trompette et Orgue

## Trompette en Si $\flat$

Moderato  $\text{♩} = 100$

François Couperin (1668 - 1733)

Arr. Michel Rondeau



# MENUET en Sol MINEUR

(de: Concerts Royaux, Premier Concert, No.6 - 1722)

pour Trompette et Orgue

## Trompette en Do

François Couperin (1668 - 1733)

Arr. Michel Rondeau

Moderato ♩ = 100

7

13

21

1. 2.

# MENUET en Sol MINEUR

(de: Concerts Royaux, Premier Concert, No.6 - 1722)  
pour Trompette et Orgue

## Orgue

François Couperin (1668 - 1733)  
Arr. Michel Rondeau

Trumpet in C

Moderato ♩ = 100

Organ

C Tpt.

Org.

1.

2.

C Tpt.

Org.

1.

2.

MENUET en Sol MINEUR - Couperin - Orgue

C Tpt.

16

Org.

16

*tr*

Detailed description: This system contains measures 16 through 21. The C Tpt. part starts with a whole rest in measure 16, followed by a quarter rest in measure 17, and then a melodic line in measures 18-21. The Org. part features a trill in measure 16, followed by a complex texture of chords and moving lines in both hands through measures 17-21.

C Tpt.

22

Org.

22

1.

2.

Detailed description: This system contains measures 22 through 25. The C Tpt. part has a melodic line in measures 22-24, followed by a first ending (marked '1.') and a second ending (marked '2.'). The Org. part continues with a similar melodic and harmonic texture, also featuring first and second endings in measures 24-25.