

# CONCERTI GROSSI

A QUATRO e SEI STRUMENTI,

Ciòè a due, & quattro Violini, Alto Viola, e Violoncello,  
con due Violini e Basso di Ripiena.

DI

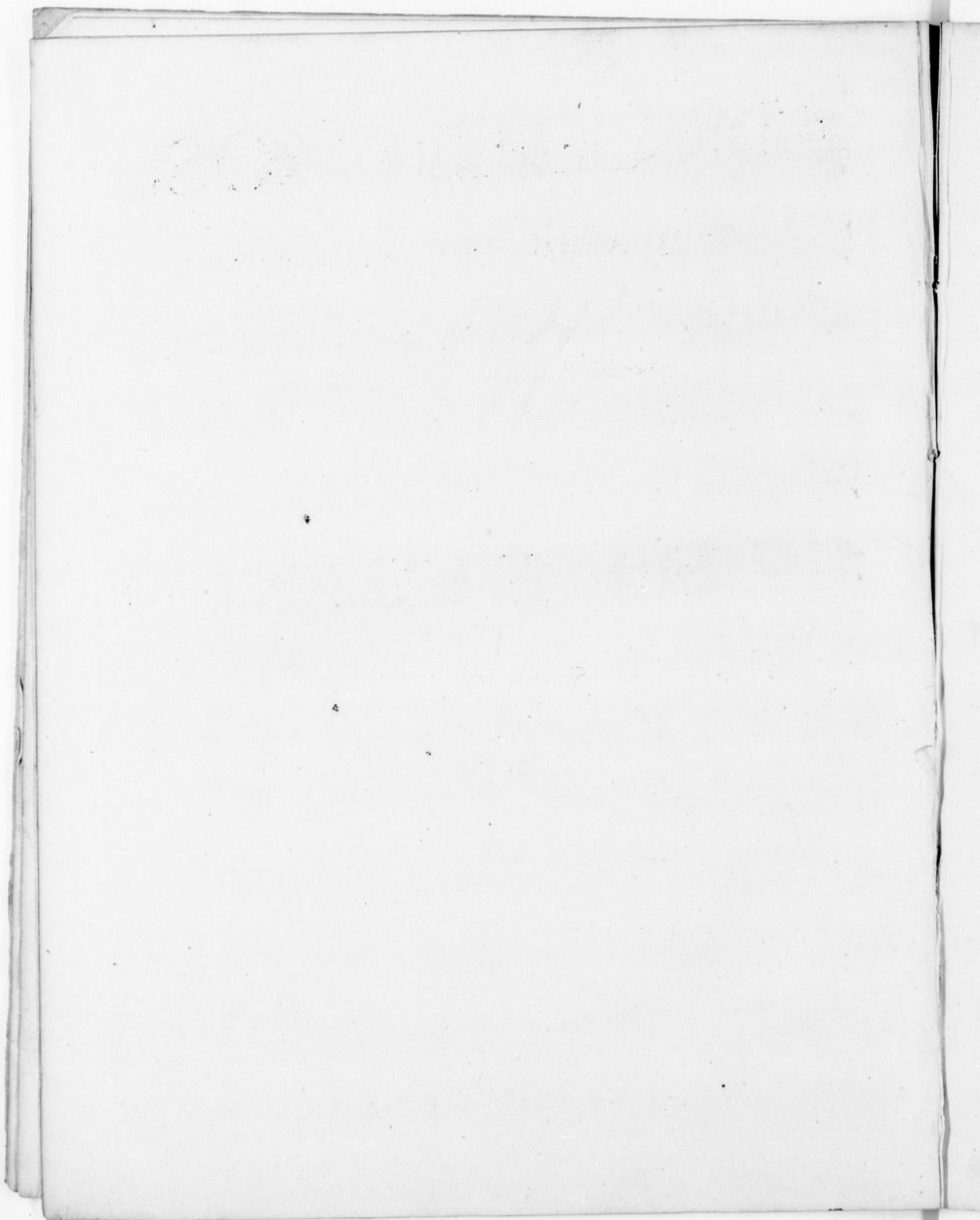
## GIUSEPPE VALENTINI.

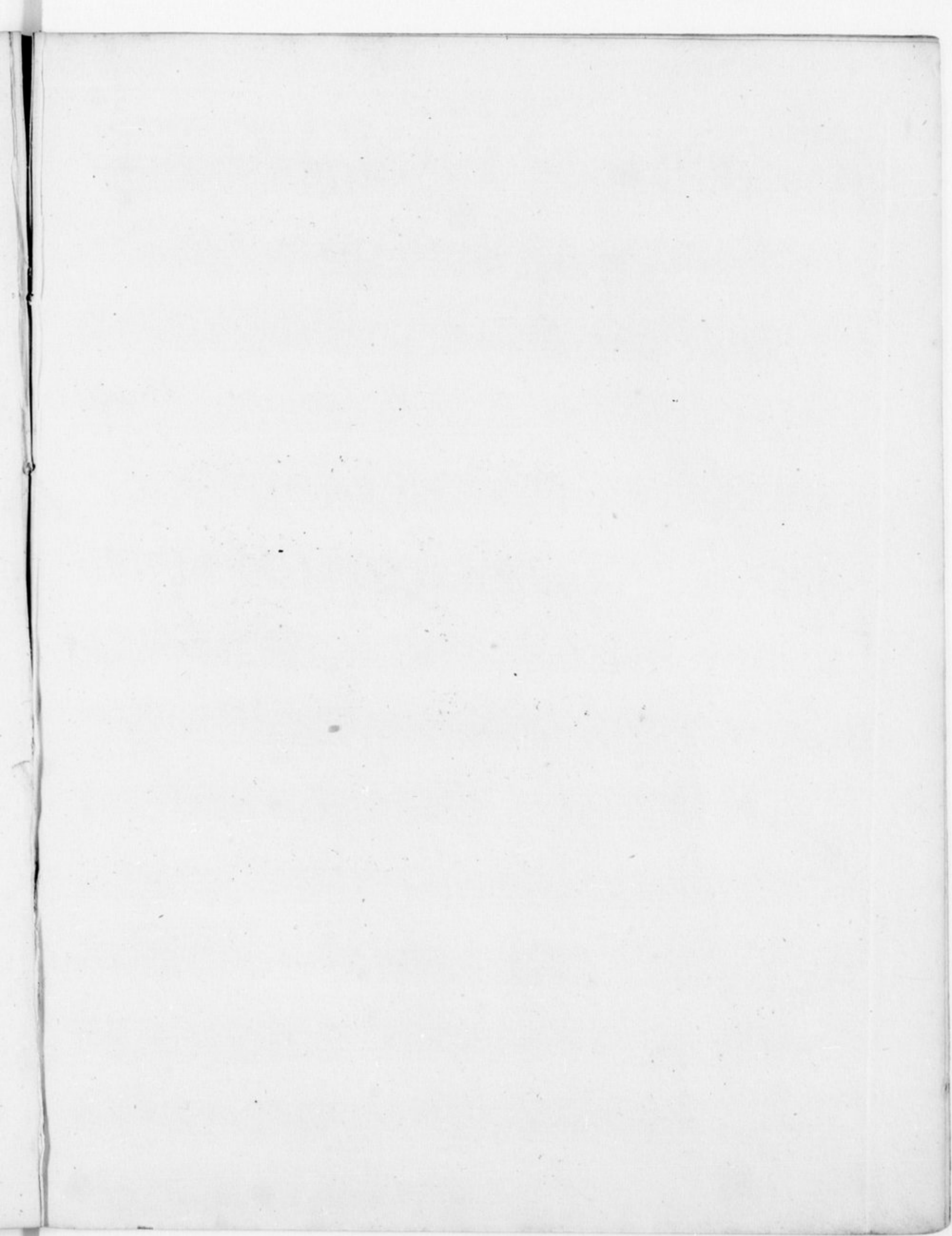
OPERA SETTIMA.

Libro Secondo.

Vm 71682 *A. A. M. S. T. E. R. D. A. M.*

*Aux depens D'ETIENNE ROGER, Marchand Libraire.*







# CONCERTO VII

Musical score for Bassoon (Basso) of Concerto VII, featuring various movements and performance markings.

**Movement 1:** *Grave Forte*, measures 1-13.

**Movement 2:** *Fuga*, measures 14-60.

**Movement 3:** *Piano*, measures 61-118.

**Movement 4:** *Adagio*, measures 119-130.

**Movement 5:** *Vivace*, measures 131-150.

**Movement 6:** *Forte*, *Adagio e Piano*, *Allegro assai*, measures 151-165.

**Handwritten annotations:** 1, 2, 30, 40, 49, 50, 60, 69, 70, 80, 85, 90, 95, 100, 105, 110, 115, 118, 119, 120, 125, 130, 135, 140, 145, 150, 155, 160, 165.

**Performance markings:** *Grave Forte*, *Fuga*, *Piano*, *Adagio*, *Vivace*, *Forte*, *Adagio e Piano*, *Allegro assai*.

**Technical markings:** 1, 2, 3, 4, 5, 6, 7, 8, 9, 10, 11, 12, 13, 14, 15, 16, 17, 18, 19, 20, 21, 22, 23, 24, 25, 26, 27, 28, 29, 30, 31, 32, 33, 34, 35, 36, 37, 38, 39, 40, 41, 42, 43, 44, 45, 46, 47, 48, 49, 50, 51, 52, 53, 54, 55, 56, 57, 58, 59, 60, 61, 62, 63, 64, 65, 66, 67, 68, 69, 70, 71, 72, 73, 74, 75, 76, 77, 78, 79, 80, 81, 82, 83, 84, 85, 86, 87, 88, 89, 90, 91, 92, 93, 94, 95, 96, 97, 98, 99, 100, 101, 102, 103, 104, 105, 106, 107, 108, 109, 110, 111, 112, 113, 114, 115, 116, 117, 118, 119, 120, 121, 122, 123, 124, 125, 126, 127, 128, 129, 130, 131, 132, 133, 134, 135, 136, 137, 138, 139, 140, 141, 142, 143, 144, 145, 146, 147, 148, 149, 150, 151, 152, 153, 154, 155, 156, 157, 158, 159, 160, 161, 162, 163, 164, 165.



Musical notation for the first system of the Basso del Concerto Grosso, measures 1-23. The notation is in bass clef with a key signature of one sharp (F#). It features a melodic line with various rhythmic values and articulation marks. A first ending bracket is present at the end of the system. The word "Piano" is written below the staff.

**CONCERTO VIII** <sup>24</sup> *Largo Tacet* <sup>1</sup> *Vivace*

Musical notation for the second system of Concerto VIII, measures 24-95. The notation is in bass clef with a key signature of one sharp (F#). It features a melodic line with various rhythmic values and articulation marks. The tempo and mood change from "Largo Tacet" to "Vivace" at measure 24. The word "Vivace" is written below the staff. The system concludes with the word "Volti" at the bottom right.



3  
Grave

2  
Piano Allegro

Piano Forte

1 2

9

Piano

Forte Presto Piano

Piano

CONCERTO IX Allegro

Adagio e Staccato Piano Allegro

Piano Forte Ada. e Pia.

10 Allegro



Basso del Concerto Grosso

First staff of music, featuring a series of eighth notes and sixteenth notes, with a '2' above the staff.

Second staff of music, featuring a series of eighth notes and sixteenth notes, with a '3' above the staff.

Third staff of music, featuring a series of eighth notes and sixteenth notes, with a '2' above the staff.

Fourth staff of music, starting with a measure rest labeled '48', followed by eighth notes and sixteenth notes.

Fifth staff of music, featuring a series of eighth notes and sixteenth notes, with a '2' above the staff.

Sixth staff of music, featuring a series of eighth notes and sixteenth notes.

Seventh staff of music, featuring a series of eighth notes and sixteenth notes, with a '5' above the staff.

Eighth staff of music, featuring a series of eighth notes and sixteenth notes, with a '2' above the staff.

Ninth staff of music, featuring a series of eighth notes and sixteenth notes, with a '2' above the staff. The tempo marking 'Adagio' is centered below the staff.

Tenth staff of music, featuring a series of eighth notes and sixteenth notes. The tempo marking 'Virace' is at the beginning, and 'Piano' and 'Forte' are placed below the staff.

Eleventh staff of music, featuring a series of eighth notes and sixteenth notes. The tempo marking 'Piano' is at the beginning, and 'Forte' and 'Piano' are placed below the staff.

Twelfth staff of music, featuring a series of eighth notes and sixteenth notes. The tempo marking 'Forte' is at the beginning, and 'Piano' and 'Forte' are placed below the staff. A '10' is above the staff.

Thirteenth staff of music, featuring a series of eighth notes and sixteenth notes. The tempo marking 'Piano' is at the beginning, and 'Forte', 'Piano', and 'Forte' are placed below the staff.

Fourteenth staff of music, featuring a series of eighth notes and sixteenth notes. The tempo marking 'Piano' is at the beginning, and 'Forte' and 'Piano' are placed below the staff.



# CONCERTO X

6  
*Andante*

9  
*Piano*

*Allegro*

*Piano* *Forte*

*Piano*

*Grave*

*Piano* *Allegro*

4 5 4  
 7 3 2  
*Piano* *Da Capo*

# CONCERTO XI

4  
*Largo*

*à sei, con quattro Violini obbligati, potendosi raddoppiarle tutte le parti se piace.*



Basso del Concerto Grosso

6 25  
*Allegro*

30 31 39 40 60

69 70 79 80 90

*Piano* *Forte*

100 110 119 120 129

24 14 159 160 169 170 179

*Piano* *Forte* *Volti*



Basso del Concerto Grosso

Grave *Piano Allegro* 5

10 15 20

25 30 35

40 45 50

60

70 75

80 85 86 *Grave* *Piano Presto*

*Piano Forte Piano Forte Piano Forte* 2

*Piano Forte Piano Forte Piano Forte*

*Piano Adagio Piano Forte*

6 2 *Piano* *Piano*

*Piano Allegro assai*

1



Basso del Concerto Grosso

Musical score for Bassoon, Concerto Grosso, page 9. It consists of six staves of music in bass clef with a key signature of one flat and a common time signature. The music features various rhythmic patterns, including eighth and sixteenth notes, and rests. There are several first endings marked with '1' and a 'Piano' dynamic marking on the sixth staff.

CONCERTO XII

Musical score for Bassoon, Concerto XII, first staff. It is in bass clef with a key signature of one flat and a common time signature. The tempo is marked 'Grave' and the dynamic is 'Piano'.

Musical score for Bassoon, Concerto XII, second staff. It is in bass clef with a key signature of one flat and a common time signature. The tempo is marked 'Presto' and the dynamics are 'Piano' and 'Forte'.

Musical score for Bassoon, Concerto XII, third staff. It is in bass clef with a key signature of one flat and a common time signature. The dynamic is 'Piano' and there is a fifth ending marked with '5'.

Musical score for Bassoon, Concerto XII, fourth staff. It is in bass clef with a key signature of one flat and a common time signature. The dynamics are 'Piano' and 'Forte'.

Musical score for Bassoon, Concerto XII, fifth staff. It is in bass clef with a key signature of one flat and a common time signature. The dynamic is 'Piano' and there is a 19-measure rest marked with '19'.

Musical score for Bassoon, Concerto XII, sixth staff. It is in bass clef with a key signature of one flat and a common time signature. The dynamics are 'Piano' and 'Forte' and there is a 4-measure rest marked with '4'.

Musical score for Bassoon, Concerto XII, seventh staff. It is in bass clef with a key signature of one flat and a common time signature. The dynamics are 'Piano' and 'Forte'.

Musical score for Bassoon, Concerto XII, eighth staff. It is in bass clef with a key signature of one flat and a common time signature. The dynamic is 'Piano' and there is a 10-measure rest marked with '10'.



Basso del Concerto Grosso

Adagio Piano

Vivace Lunghe

1

18

Piano

Lunghe

10

Piano Allegro

2

