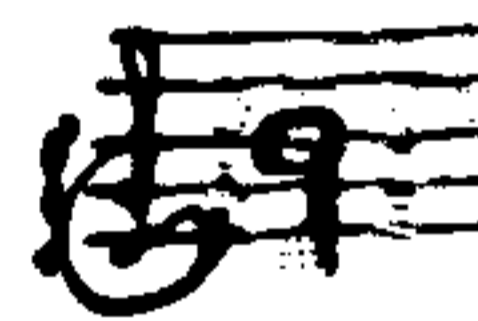


Über die folgende Seite



Spann sich der bewährten Kammer

Joh. Seb. Bach'scher Antagonen, Wilh. Prust in Berlin, in einem am 12^{ten} April 1861. an mich gerichteten Briefe folgendenmaßen:

„die erste Seite in Edur, die ich mit dem besten Danke zuvörderst, ist (natürlich mit Ausnahme der ersten Takt) - die erste in J. S. Bach'scher Antagonen, so ist, wie mir irgendwem. - Auf die Composition ist mir J. S. Bach'scher, und ich bitte dieselbe die Fortschrittsform zu 29^{ten} Capitel, Band V, oder die letzte der Sonaten für Violine allein, zu vergleichen. - Unmöglich muß es aber bleiben, ob diese Seite für Clavier allein besessen soll, oder mit Ergänzung (die Aufschrieb?) arrangiert ist. - Auf das hängt sich - die die Angabe „Cembalo, fehlt - ob Bach nicht ein anderes Instrument, z. B. die Cembalo, im Sinne gefast hat. Auffallend bleibt jedenfalls die tiefe Lage, die selbst über  hinausgeht, und in welcher die Seite sich zu bewegen pflegt.“

Die Gemüthsart obigen Abschrift aus W. Prust's Brief vom 12^{ten} April 1861. bringe ich. München den 16^{ten} Mai 1861.



Johann Jos. Maier
Conservator der musikal. Abtheilung der kgl.
Bibliothek in München.

Prelude



piano



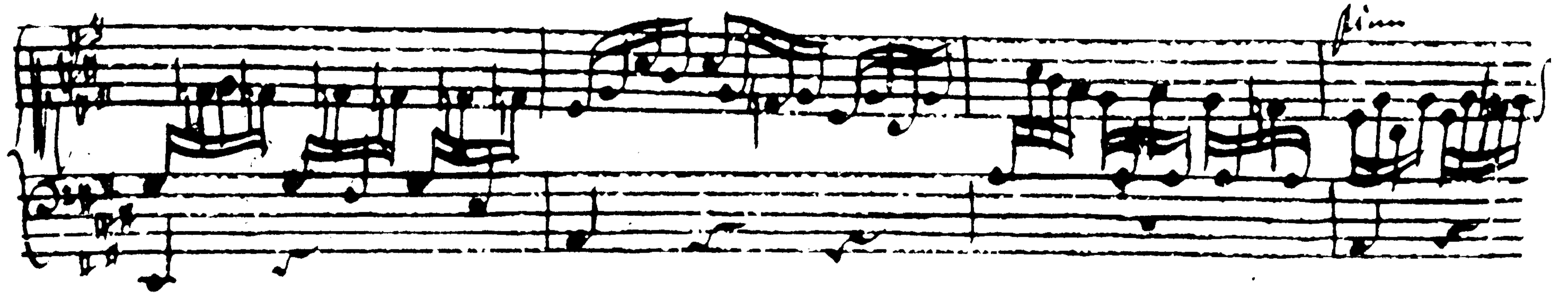
forte *piano*

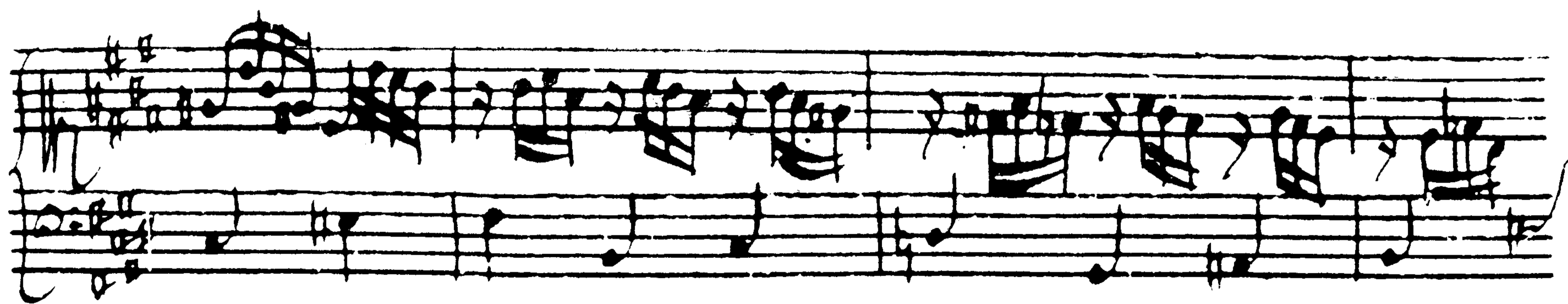
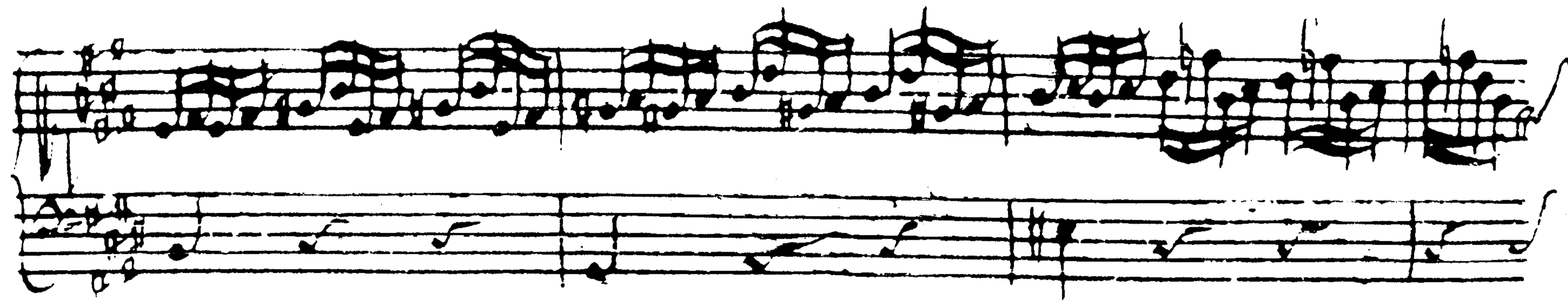


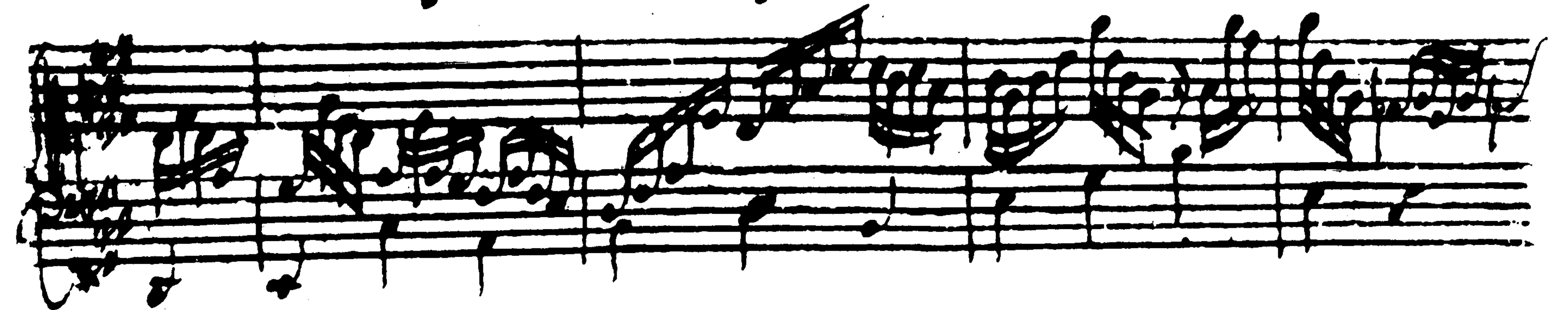
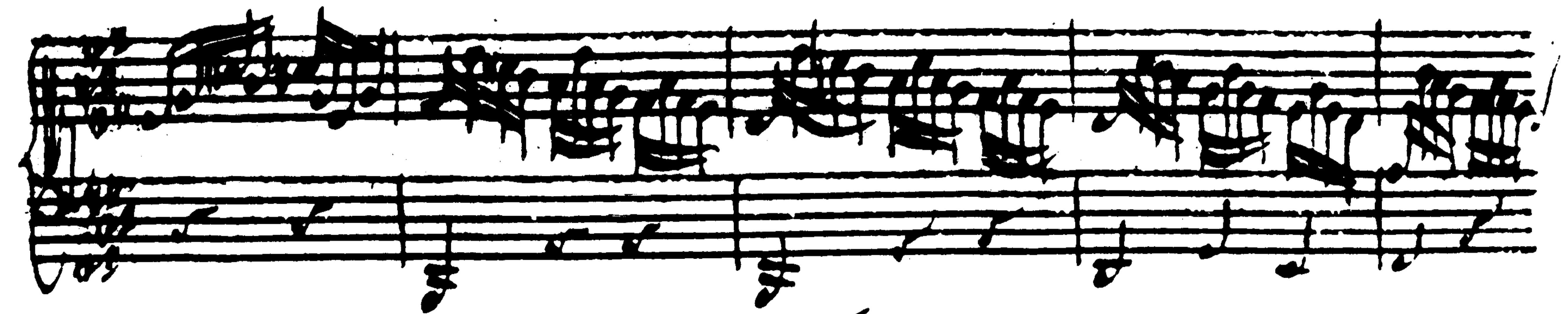
forte











Handwritten musical notation on two staves. The top staff features a complex melodic line with many sixteenth and thirty-second notes. The bottom staff provides a harmonic accompaniment with a steady eighth-note bass line.

Handwritten musical notation on two staves. The top staff continues the intricate melodic development. The bottom staff maintains the rhythmic accompaniment with some chordal textures.

Handwritten musical notation on two staves. The word "Loure" is written in a cursive hand on the left side of the first staff. The notation continues with melodic and harmonic lines.

Handwritten musical notation on two staves. The top staff shows a melodic line with some grace notes. The bottom staff continues the accompaniment.

Handwritten musical notation on two staves. The top staff features a melodic line with some slurs. The bottom staff continues the accompaniment.

Handwritten musical notation on two staves. The top staff has a melodic line with a triplet of eighth notes. The bottom staff continues the accompaniment.

Handwritten musical notation on two staves. The top staff features a melodic line with some slurs. The bottom staff continues the accompaniment.

Handwritten musical notation on two staves. The top staff contains a melodic line with various note values and rests. The bottom staff contains a bass line with chords and single notes. There are some markings above the top staff, possibly indicating fingerings or breath marks.

Handwritten musical notation on two staves. The notation is dense with many notes and rests. There are several markings above the top staff, including what looks like a 't' and some other symbols. The bottom staff continues the bass line.

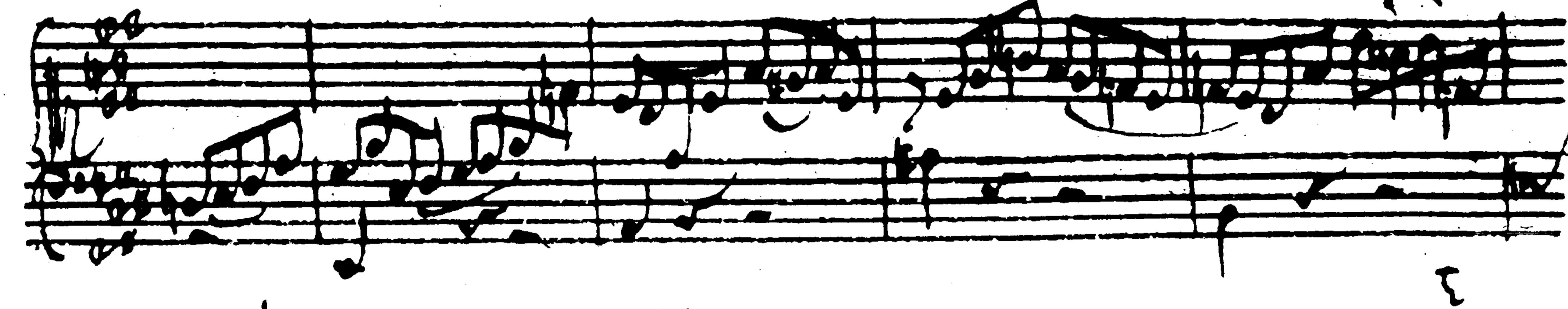
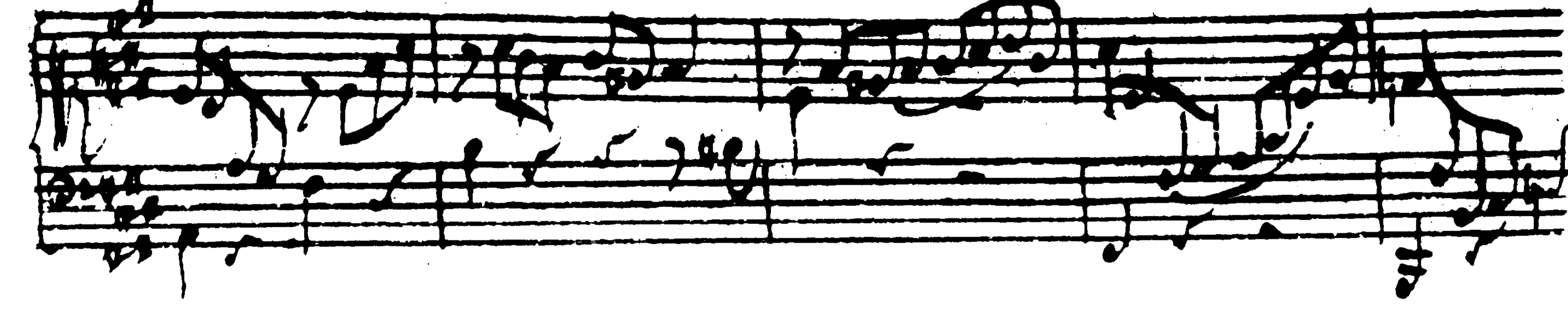
Handwritten musical notation on two staves. The text "Fugue en Andante" is written in cursive on the left side of the first staff. The notation continues across both staves.

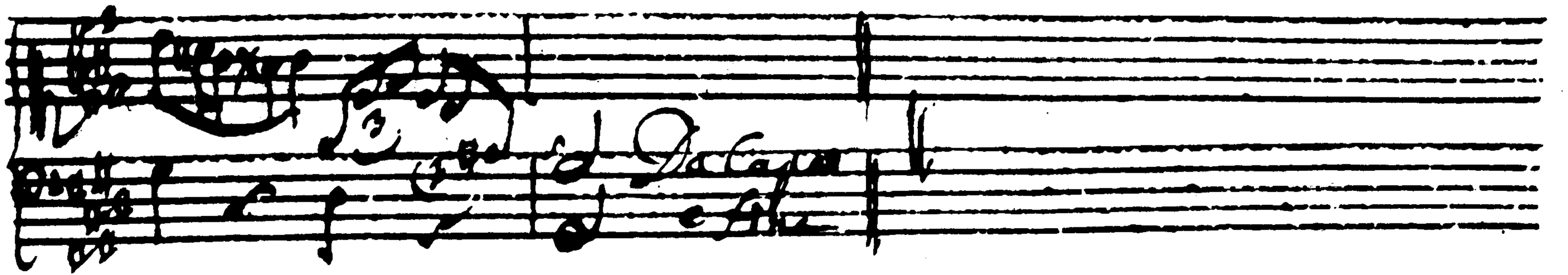
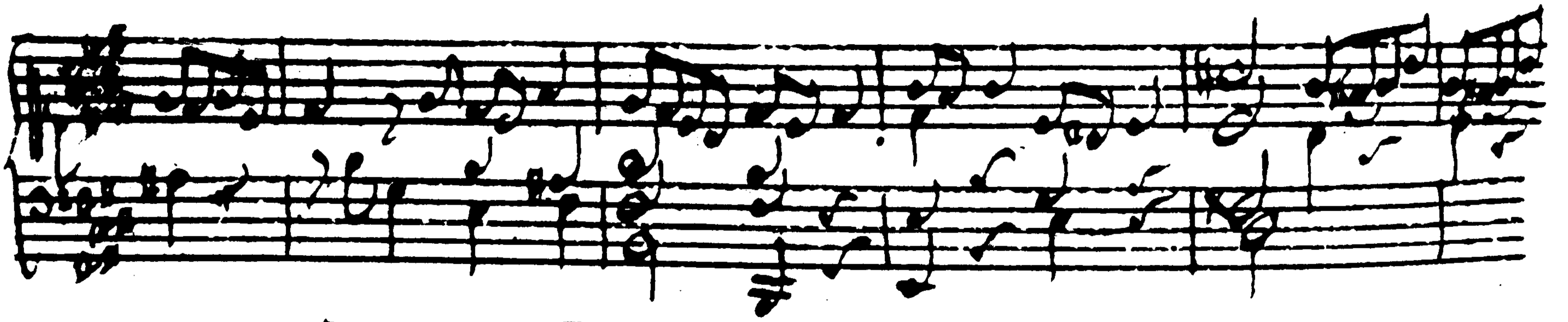
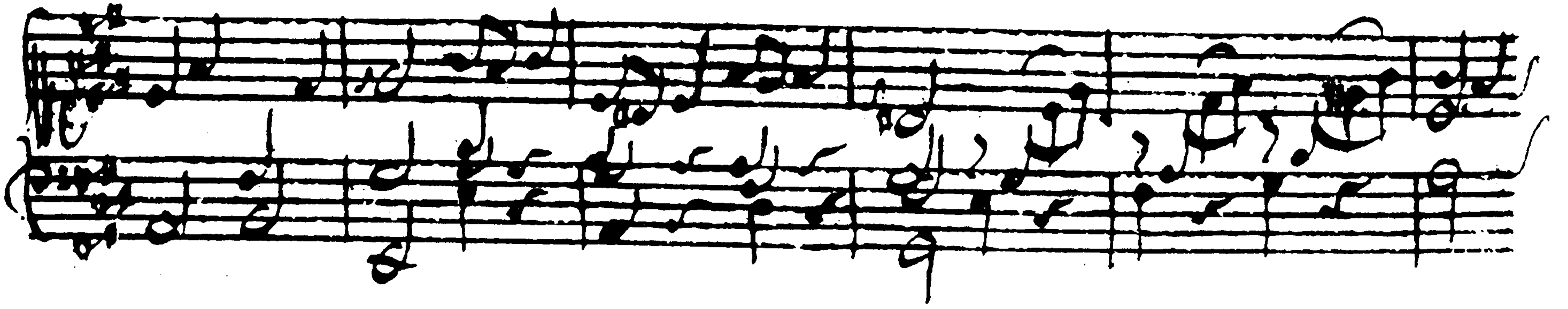
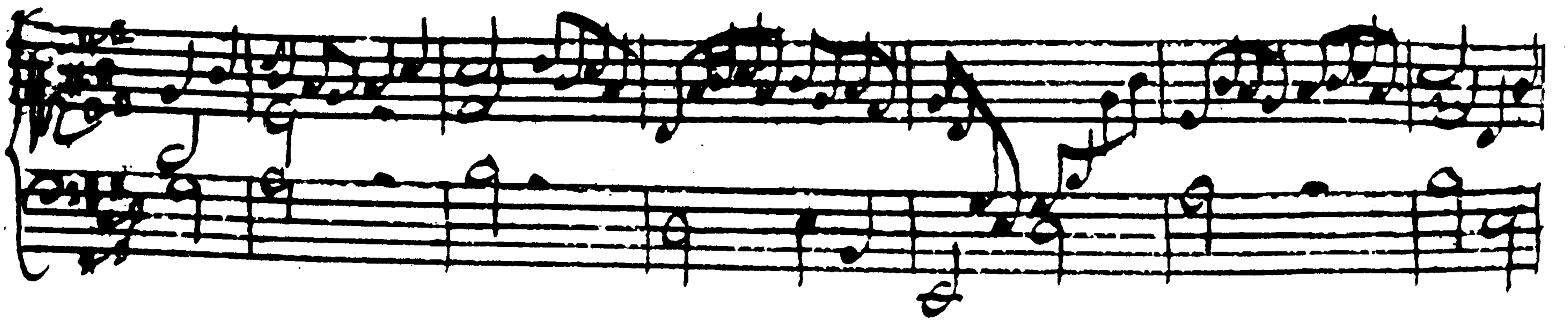
Handwritten musical notation on two staves. The notation is complex, with many notes and rests. There are some markings above the top staff, including a circled 'o'.

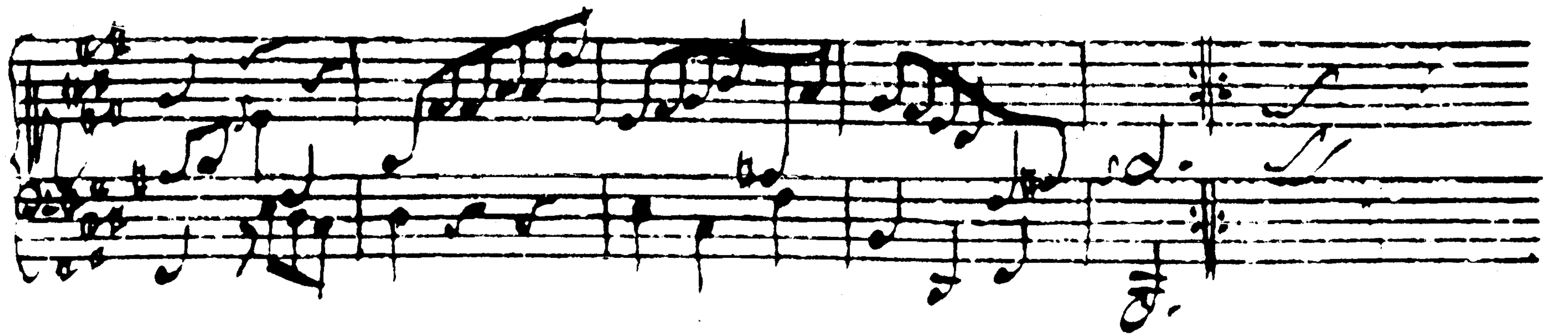
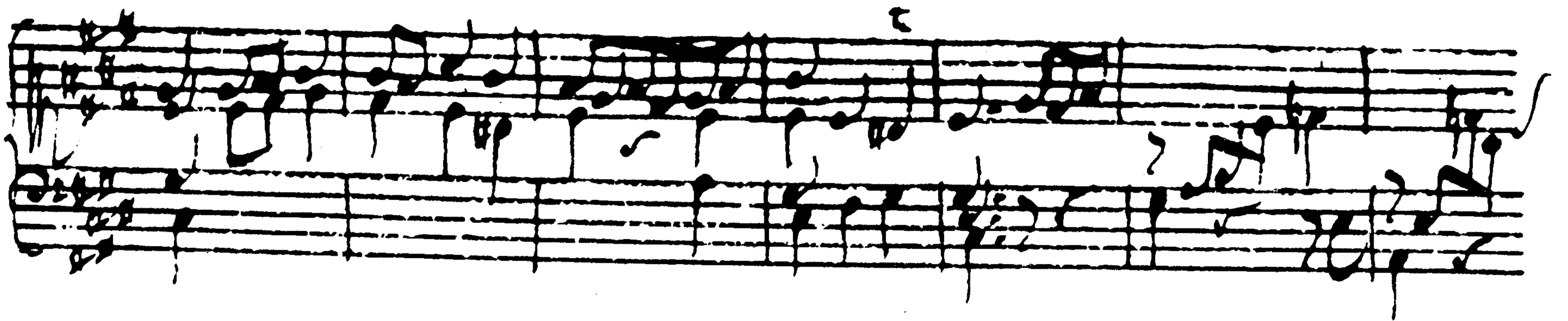
Handwritten musical notation on two staves. The notation is dense with many notes and rests. There are some markings above the top staff, including a circled 'o'.

Handwritten musical notation on two staves. The notation is dense with many notes and rests. There are some markings above the top staff, including a circled 'o'.

Handwritten musical notation on two staves. The notation is dense with many notes and rests. There are some markings above the top staff, including a circled 'o'.







Handwritten musical notation, first system. It consists of two staves. The upper staff contains a melodic line with various note values and rests. The lower staff contains a bass line with similar note values and rests.

Handwritten musical notation, second system. It consists of two staves. The upper staff contains a melodic line with various note values and rests. The lower staff contains a bass line with similar note values and rests.

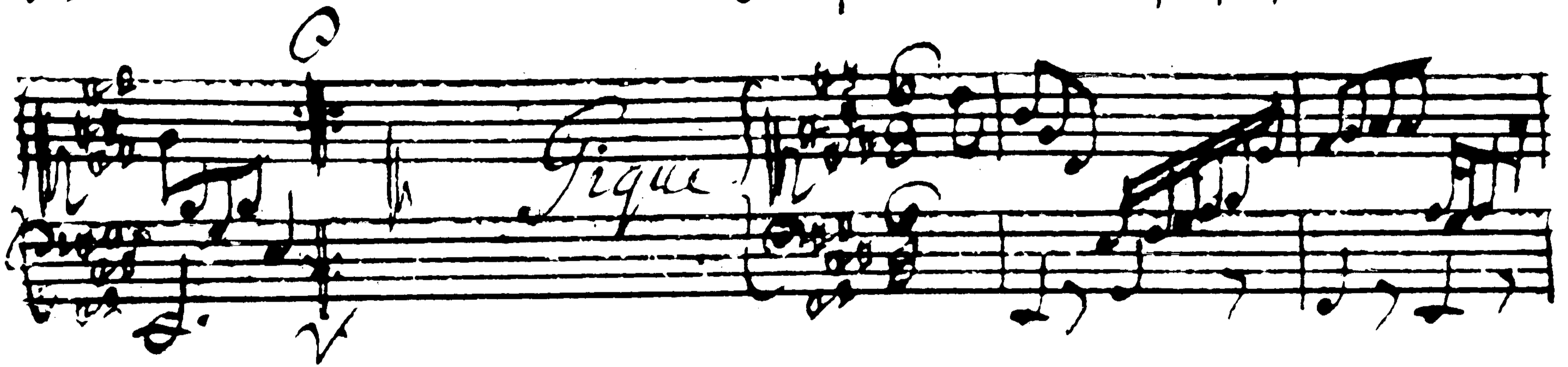
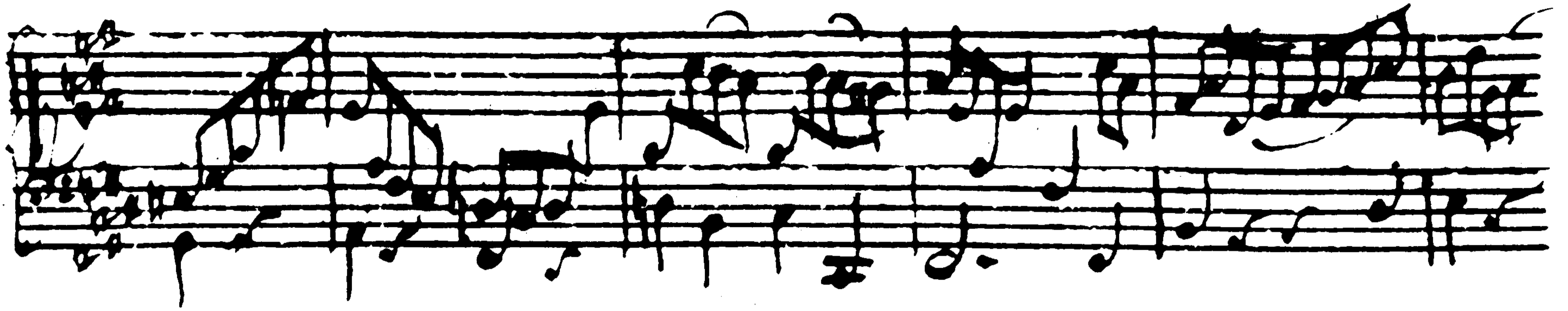
Handwritten musical notation, third system. It consists of two staves. The upper staff contains a melodic line with various note values and rests. The lower staff contains a bass line with similar note values and rests.

Handwritten musical notation, fourth system. It consists of two staves. The word "Source" is written in the left margin. The upper staff contains a melodic line with various note values and rests. The lower staff contains a bass line with similar note values and rests.

Handwritten musical notation, fifth system. It consists of two staves. The word "Fin" is written in the right margin. The upper staff contains a melodic line with various note values and rests. The lower staff contains a bass line with similar note values and rests.

Handwritten musical notation, sixth system. It consists of two staves. The upper staff contains a melodic line with various note values and rests. The lower staff contains a bass line with similar note values and rests.

Handwritten musical notation, seventh system. It consists of two staves. The upper staff contains a melodic line with various note values and rests. The lower staff contains a bass line with similar note values and rests.





Fine

