

Stephan Beneking

*12 Valses mélancoliques
- Dance of the Cranes -*

Berlin, 2015

www.beneking.com

Tanz der Kraniche - Dance of the Cranes

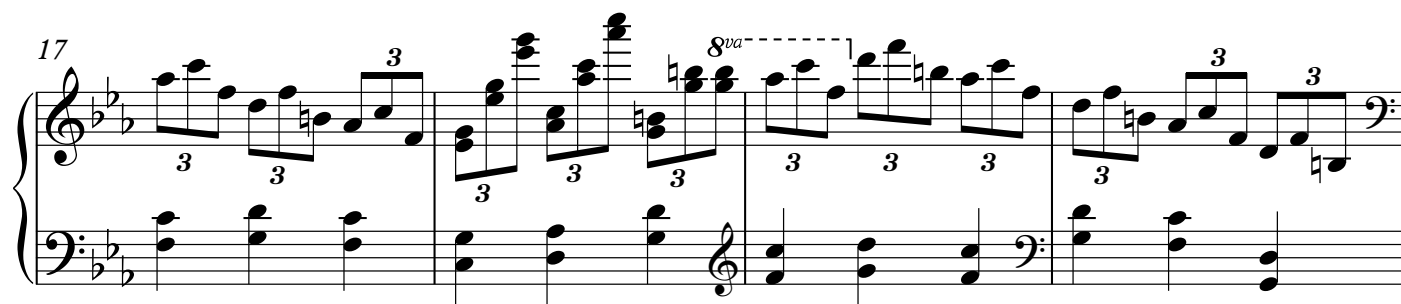
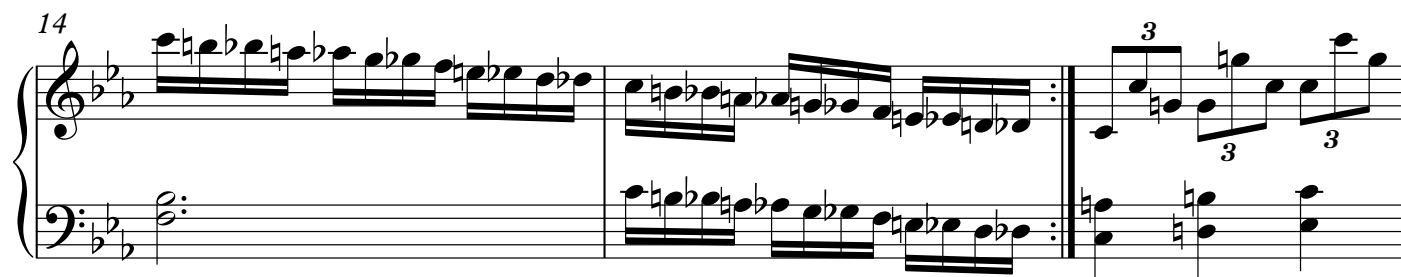
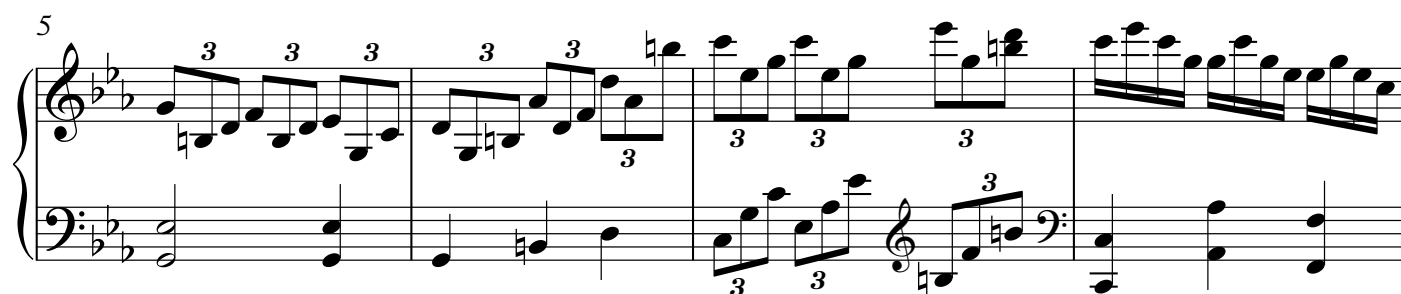
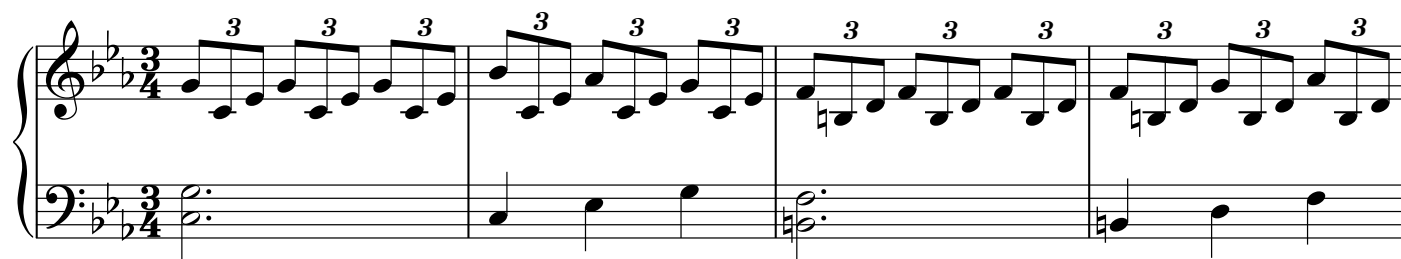
Valses mélancoliques III

No. 1 in C Minor

Stephan Beneking

www.beneking.com

Berlin, 2015



Measures 21-24 of a musical score in B-flat major (two flats). The piece is in 3/4 time. Measures 21 and 22 feature a continuous eighth-note triplet in the left hand. Measures 23 and 24 continue this pattern with some harmonic changes in the right hand.

Measures 25-28. Measure 25 has a triplet in the left hand. Measure 26 has a triplet in the right hand. Measures 27 and 28 continue the triplet patterns in both hands.

Measures 29-33. Measure 29 has a triplet in the right hand. Measures 30 and 31 have a triplet in the left hand. Measures 32 and 33 have a triplet in the right hand.

Measures 34-37. Measures 34 and 35 have a triplet in the left hand. Measures 36 and 37 have a triplet in the right hand. An 8va (octave) marking is present above measure 36.

Measures 38-40. Measures 38 and 39 have a triplet in the left hand. Measure 40 has a triplet in the right hand. An 8va (octave) marking is present above measure 39.

Measures 41-43. Measures 41 and 42 have a triplet in the left hand. Measure 43 has a triplet in the right hand. An 8va (octave) marking is present above measure 41. The piece concludes with a final chord in measure 43.

Valses mélancoliques III
No. 2 in C Sharp Minor

Stephan Beneking
www.beneking.com
Berlin, 2015

The image displays a musical score for the song "The Rose Tree." The score is written for a piano and a vocal line. The key signature is three sharps (F#, C#, G#), and the time signature is 3/4. The score is divided into four systems, each containing two staves (piano and vocal). The first system shows measures 1 through 4, with a trill (tr) in measure 1 and a triplet (3) in measure 2. The second system shows measures 5 through 8, with an 8va marking in measure 5 and triplets in measures 6, 7, and 8. The third system shows measures 9 through 12, with a trill in measure 9 and triplets in measures 10, 11, and 12. The fourth system shows measures 13 through 16, with triplets in measures 13, 14, and 15, and trills in measures 16, 17, and 18. The score concludes with a double bar line in measure 18.

20

tr tr

23

28

tr 3 3 3 3 3

34

8va 3 3 3 3 3

38

8va 3 3 3 3 3

42

tr 8va 3 3

46

Measures 46-49. The piece is in A major (three sharps). Measures 46-49 feature a complex texture with many triplets in both the treble and bass staves. Measure 49 ends with a repeat sign.

50

Measures 50-52. Measure 50 continues with triplets. Measures 51-52 show a shift in texture with more eighth-note patterns in the treble and sustained notes in the bass.

53

Measures 53-56. Measures 53-54 have triplets in the bass. Measures 55-56 feature trills (*tr*) in the treble over sustained bass notes.

57

Measures 57-59. Measures 57-59 feature rapid eighth-note runs in the treble with trills (*tr*) at the end of each measure, over sustained bass notes.

60

Measures 60-64. Measures 60-64 continue with rapid eighth-note runs and trills in the treble. Measure 64 has a triplet in the bass.

65

Measures 65-68. Measure 65 has an octave shift (*8va*) indicated by a dashed line. Measures 65-68 feature trills in the treble and triplets in the bass. The piece ends with a repeat sign.

Tanz der Kraniche - Dance of the Cranes

Valses mélancoliques III

No. 3 in D Minor

Stephan Beneking
www.beneking.com
Berlin, 2015

Measures 1-5 of the piece. The music is in 3/4 time and D minor. The right hand features a series of chords and dyads, while the left hand provides a harmonic accompaniment with chords and moving lines.

Measures 6-10. Measure 6 begins with a triplet of eighth notes in the right hand. The left hand continues with a steady accompaniment. The piece concludes with a final chord in measure 10.

Measures 11-15. Measures 11 and 13 feature trills (tr) in the right hand. A dashed line labeled '8va' indicates an octave transposition for measures 12 and 14. The left hand consists of sustained chords.

Measures 16-20. Measures 17 and 19 contain trills with a wavy line (tr~) in the right hand. The left hand has a few chords and rests. A repeat sign is present at the end of measure 18.

Measures 21-25. The right hand plays a series of chords and dyads. The left hand provides a harmonic base with chords and some moving lines.

27

3

32

tr

36

tr

41

3

46

tr

51

tr

55 *8va*

55 56 57

58 *8va*

58 59 60

61 (8) *tr*

61 62 63 64 65

67

67 68 69 70 71

72

72 73 74 75 76

Tanz der Kraniche - Dance of the Cranes

Valses mélancoliques III

No. 4 in D Sharp Minor

Stephan Beneking

www.beneking.com

Berlin, 2015

5

9

13

18

8va

tr

tr

tr

tr

5

5

5

22

22

29

29

33

33

37

37

44

44

49

49

53 *tr* *tr* *tr* *tr* *tr*

58 *tr* *tr* *tr*

61 *tr* *tr* *tr*

64 *tr* *tr* *tr* *8va* *8vb* *8vb*

Tanz der Kraniche - Dance of the Cranes

Valses mélancoliques III

No. 5 in E Minor

Stephan Beneking
www.beneking.com
Berlin, 2015

Measures 1-7 of the piece. The key signature is one sharp (F#) and the time signature is 3/4. The melody in the right hand consists of eighth and quarter notes, while the left hand provides a simple harmonic accompaniment with chords and single notes.

Measures 8-12. Measure 8 begins with a treble clef and a key signature change to two sharps (F# and C#). Measures 9-12 feature a more active melody with trills (tr) and a grace note (8va) in measure 9. The bass line continues with chords and single notes.

Measures 13-16. The melody in the right hand is characterized by rapid sixteenth-note passages and trills (tr). The bass line consists of chords and single notes, providing a steady accompaniment.

Measures 17-22. Measures 17-18 continue with rapid sixteenth-note passages and trills. Measures 19-22 show a more melodic line in the right hand with half notes and quarter notes, while the bass line remains accompanimental with chords and single notes.

Measures 23-26. Measures 23-25 feature a repeat sign followed by a section with triplets (3) in the right hand. Measure 26 concludes the piece with a final chord in the right hand and a single note in the bass.

29

tr tr tr tr tr

34

tr

39

8va 8vb

Tanz der Kraniche - Dance of the Cranes

Valses mélancoliques III

No. 6 in F Minor

Stephan Beneking
www.beneking.com
Berlin, 2015

6

12

18

24

29

31

tr tr tr

37

tr tr tr

42

48

tr tr

54

tr tr

60

tr tr tr tr

65

tr tr

Tanz der Kraniche - Dance of the Cranes

Valses mélancoliques III

No. 7 in F Sharp Minor

Stephan Beneking

www.beneking.com

Berlin, 2015

"Valse triste"

Variation of "Petit Reve triste"

4

8

12

16

20

23

5 5 5 6 6 6

26

8va 6 6 tr

29

tr

32

tr 8va

35

tr

38

6 6 6

41

tr

45

45 46 47 48

49

49 50 51 52

53

53 54 55 56

57

57 58 59 60

61

61 62 63 64

65

65 66 67 68

Tanz der Kraniche - Dance of the Cranes

Valses mélancoliques III

No. 8 in G Minor

Stephan Beneking
www.beneking.com
Berlin, 2015

8va tr

6

11 tr

14 tr

18 tr tr~ 8va tr~

3

23 *tr* *tr* *tr* *tr* *tr* *tr* *tr*

27 *tr* 3 *tr* 3 6 6

31 *8va* *tr* *tr* *tr* *tr* *tr* *tr*

35 *tr* *tr* *tr* *tr* *tr* *tr* 3 3 3 3

39 6 6 6 *tr* *tr* *tr*

43 *tr*

48

51

55

59

63

65

Tanz der Kraniche - Dance of the Cranes

Valses mélancoliques III

No. 9 in G Sharp Minor

Stephan Beneking
www.beneking.com
Berlin, 2015

Measures 1-7 of the piece. The music is in G sharp minor (three sharps: F#, C#, G#) and 3/8 time. The right hand features a melodic line with eighth and sixteenth notes, while the left hand provides a harmonic accompaniment with chords and single notes.

Measures 8-14. Measure 8 is marked with a '8va' (octave up) instruction. The right hand continues with a melodic line, and the left hand features a series of chords. There are some 'x' marks above notes in measures 11 and 12, possibly indicating breath marks or specific articulation.

Measures 15-20. The right hand has a more active melodic line with sixteenth notes. The left hand continues with a steady accompaniment of chords and single notes.

Measures 21-26. Measures 22 and 23 feature trills ('tr') in the right hand. There are 'x' marks above notes in measures 21, 22, and 23. The piece concludes with a double bar line at the end of measure 26.

Measures 27-32. Measures 27 and 28 feature trills ('tr') in the right hand. Measures 29 and 30 have triplets ('3') in the right hand. The piece ends with a final chord in measure 32, which is held for a duration indicated by a long horizontal line.

33

Measures 33-38. Measure 33 features a whole rest in the treble and a complex bass line. Measures 34-38 show a descending bass line with various chords and a final quarter note in the bass.

39

Measures 39-44. Measures 39-44 show a continuous eighth-note melody in the treble and a corresponding eighth-note bass line. Measure 44 ends with a quarter rest in the treble and a quarter note in the bass.

45

Measures 45-50. Measures 45-50 show a continuous eighth-note melody in the treble and a corresponding eighth-note bass line. Measure 50 ends with a quarter rest in the treble and a quarter note in the bass.

51

Measures 51-57. Measures 51-57 show a continuous eighth-note melody in the treble and a corresponding eighth-note bass line. Measure 57 ends with a quarter rest in the treble and a quarter note in the bass.

58

Measures 58-63. Measures 58-63 show a continuous eighth-note melody in the treble and a corresponding eighth-note bass line. Measure 63 ends with a quarter rest in the treble and a quarter note in the bass.

62

Measures 62-66 of a piano piece in E major. Measure 62 features a treble clef with a series of eighth notes and a bass clef with a single eighth note. Measures 63-65 continue the melodic and harmonic development with various note values and rests. Measure 66 ends with a repeat sign. The key signature has four sharps (F#, C#, G#, D#).

67

Measures 67-72 of a piano piece in E major. Measures 67-71 consist of a continuous eighth-note melody in the treble clef, while the bass clef provides a steady accompaniment of eighth notes. Measure 72 concludes the phrase with a repeat sign. The key signature has four sharps (F#, C#, G#, D#).

73

Measures 73-76 of a piano piece in E major. Measures 73-74 feature a trill in the treble clef. Measures 75-76 include a rapid sixteenth-note passage in the treble clef, marked with a trill and a triplet. The bass clef provides a steady accompaniment. The key signature has four sharps (F#, C#, G#, D#).

77

Measures 77-78 of a piano piece in E major. Measure 77 features a rapid sixteenth-note passage in the treble clef, marked with a trill and a triplet. Measure 78 continues the melodic and harmonic development. The key signature has four sharps (F#, C#, G#, D#).

79

Measures 79-82 of a piano piece in E major. Measures 79-81 feature a rapid sixteenth-note passage in the treble clef, marked with a trill and a triplet. Measure 82 concludes the phrase with a repeat sign. The key signature has four sharps (F#, C#, G#, D#).

Tanz der Kraniche - Dance of the Cranes

Valses mélancoliques III

No. 10 in A Minor

Stephan Beneking
www.beneking.com
Berlin, 2015

4

9

12

16

20

Tanz der Kraniche - Dance of the Cranes

Valses mélancoliques III

No. 11 in B Flat Minor

Stephan Beneking
www.beneking.com
Berlin, 2015

Measures 1-9 of the piece. The key signature is B-flat minor (three flats). The time signature is 3/8. The music features a mix of chords and moving lines in both hands, with some rests in the right hand.

Measures 10-16. The right hand has a dense, rapid chordal texture, while the left hand continues with a steady eighth-note accompaniment.

Measures 17-25. Measure 17 starts with a measure rest in the right hand. Measures 18-20 show an ascending eighth-note scale in the right hand, marked with an 8va (octave up) bracket. The left hand has a descending eighth-note scale in measures 18-20.

Measures 26-32. The right hand features a series of chords, some with rapid sixteenth-note passages. The left hand continues with eighth-note accompaniment.

Measures 33-40. Measures 33-35 show an ascending eighth-note scale in the right hand, marked with an 8va (octave up) bracket. The left hand has a descending eighth-note scale in measures 33-35. The piece concludes with a final chord in measure 40.

41

Measures 41-46 of a musical score in B-flat major (three flats). The system consists of two staves. Measure 41 features a treble staff with a melodic line and a bass staff with a steady eighth-note accompaniment. Measures 42-43 show the treble staff with a descending melodic line and the bass staff with a sustained chord. Measures 44-45 contain triplets in both staves. Measure 46 ends with a treble staff triplet and a whole note in the bass staff.

47

Measures 47-53. Measures 47-48 feature a treble staff with dense chords and a bass staff with a descending line. Measures 49-50 show the treble staff with chords and the bass staff with a descending line. Measures 51-52 feature a treble staff with chords and a bass staff with a descending line. Measure 53 ends with a treble staff chord and a bass staff descending line.

54

Measures 54-62. Measures 54-55 feature a treble staff with chords and a bass staff with a descending line. Measures 56-57 show the treble staff with chords and the bass staff with a descending line. Measures 58-59 feature a treble staff with chords and a bass staff with a descending line. Measures 60-61 show the treble staff with chords and the bass staff with a descending line. Measure 62 ends with a treble staff chord and a bass staff descending line.

63

Measures 63-70. Measures 63-64 feature a treble staff with chords and a bass staff with a descending line. Measures 65-66 show the treble staff with chords and the bass staff with a descending line. Measures 67-68 feature a treble staff with chords and a bass staff with a descending line. Measures 69-70 show the treble staff with chords and the bass staff with a descending line.

71

Measures 71-78. Measures 71-72 feature a treble staff with chords and a bass staff with a descending line. Measures 73-74 show the treble staff with chords and the bass staff with a descending line. Measures 75-76 feature a treble staff with chords and a bass staff with a descending line. Measures 77-78 show the treble staff with chords and the bass staff with a descending line.

79

Measures 79-86. Measures 79-80 feature a treble staff with chords and a bass staff with a descending line. Measures 81-82 show the treble staff with chords and the bass staff with a descending line. Measures 83-84 feature a treble staff with chords and a bass staff with a descending line. Measures 85-86 show the treble staff with chords and the bass staff with a descending line.

91

Measures 91-98 of a musical score in E-flat major (three flats). The right hand features a complex texture with many beamed sixteenth notes and chords, while the left hand plays a steady eighth-note accompaniment. Measure 98 ends with a fermata over a triad.

99

Measures 99-103 of the musical score. The right hand continues with dense sixteenth-note patterns and chords. The left hand maintains its eighth-note accompaniment. Measure 103 concludes with a fermata over a triad.

104

Measures 104-107 of the musical score. The right hand plays a series of chords and moving lines. The left hand continues with eighth-note accompaniment. Measure 107 ends with a fermata over a triad. A double bar line follows measure 107.

8^{vb}

Tanz der Kraniche - Dance of the Cranes

Valses mélancoliques III

No. 12 in B Minor

Stephan Beneking
www.beneking.com
Berlin, 2015

Measures 1-6 of the piece. The key signature is B minor (two sharps: F# and C#). The time signature is 2/4. The notation features a treble and bass staff. Measures 1-2 are marked with a repeat sign. Trills (tr) and tremolos (tr~) are indicated above notes in measures 1, 2, 3, and 4.

Measures 7-12. Measure 7 is marked with a '7' above the staff. Trills (tr) and tremolos (tr~) are indicated above notes in measures 8, 9, 10, 11, and 12.

Measures 13-17. Measure 13 is marked with a '13' above the staff. This section includes triplets (3) and an octave trill (8va~) in measure 14. Trills (tr) and tremolos (tr~) are indicated above notes in measures 13, 14, 15, 16, and 17.

Measures 18-22. Measure 18 is marked with a '18' above the staff. Trills (tr) and tremolos (tr~) are indicated above notes in measures 19, 20, 21, and 22.

Measures 23-27. Measure 23 is marked with a '23' above the staff. Trills (tr) and tremolos (tr~) are indicated above notes in measures 23, 24, 25, 26, and 27.

28 *tr* *tr* *8va* *tr* *tr*

33 (8) *tr* *tr* *tr*

40 (8) *tr* *tr* *tr* *tr* *tr*

46 *tr* *tr* *8va* *tr* *tr*

50 *tr* *tr* *tr*

55 *tr* *tr* *tr* *tr*

62

Measures 62-67 of a musical score in D major. Measures 62-65 feature a melody in the right hand with trills (tr) and grace notes (tr~) over eighth notes, while the left hand plays a steady eighth-note accompaniment. Measure 66 shows a trill in the right hand over a half note. Measure 67 begins a triplet of eighth notes in the right hand, with the left hand continuing its accompaniment.

68

Measures 68-71 of a musical score in D major. Measures 68-71 feature a continuous triplet of eighth notes in the right hand. The left hand plays a simple eighth-note accompaniment, with a slight melodic variation in measure 70.

72

Measures 72-75 of a musical score in D major. Measures 72-74 feature a continuous triplet of eighth notes in the right hand. Measure 75 concludes the section with a final triplet of eighth notes in the right hand and a half note in the left hand.

Der letzte Flug der Kraniche

The last flight of the Cranes

Stephan Beneking
www.beneking.com
Berlin, 2012

Measures 1-5 of the piano score. The key signature is B-flat major (two flats). The time signature is 4/4. Measure 1 features a complex right-hand melody with triplets and a sustained left-hand accompaniment. Measures 2-5 show a continuation of the right-hand melody with various rhythmic patterns and a steady left-hand accompaniment.

Measures 6-7 of the piano score. Measure 6 continues the right-hand melody with a steady eighth-note pattern. Measure 7 introduces a new right-hand melody with a more complex rhythmic structure, while the left hand continues its accompaniment.

Measures 8-10 of the piano score. Measure 8 features a right-hand melody with a steady eighth-note pattern. Measure 9 shows a right-hand melody with a more complex rhythmic structure, including a triplet. Measure 10 continues the right-hand melody with a steady eighth-note pattern. The left hand provides a steady accompaniment throughout.

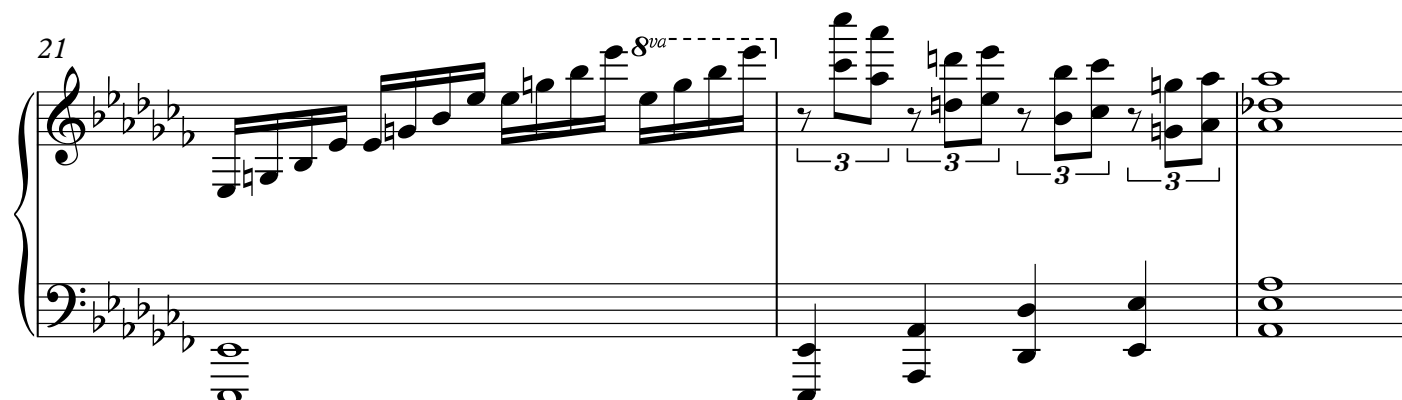
Measures 11-14 of the piano score. Measure 11 features a right-hand melody with a steady eighth-note pattern. Measure 12 shows a right-hand melody with a more complex rhythmic structure, including a triplet. Measure 13 continues the right-hand melody with a steady eighth-note pattern. Measure 14 shows a right-hand melody with a more complex rhythmic structure, including a triplet. The left hand provides a steady accompaniment throughout.

Measures 15-18 of the piano score. Measure 15 features a right-hand melody with a steady eighth-note pattern. Measure 16 shows a right-hand melody with a more complex rhythmic structure, including a triplet. Measure 17 continues the right-hand melody with a steady eighth-note pattern. Measure 18 shows a right-hand melody with a more complex rhythmic structure, including a triplet. The left hand provides a steady accompaniment throughout.

19



21



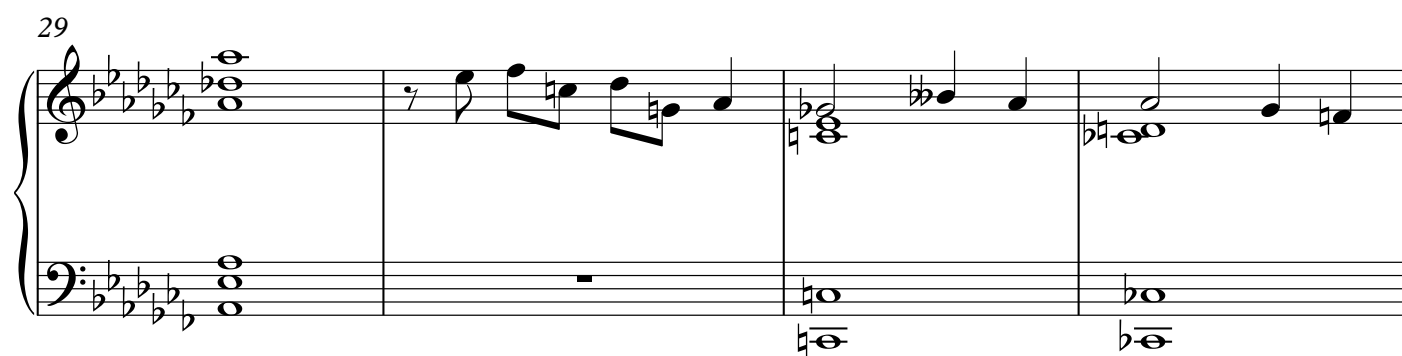
24



26



29



33

This musical score segment consists of four measures. The key signature has five flats (B-flat, E-flat, A-flat, D-flat, G-flat), and the time signature is 4/4. The melody in the treble clef begins with a whole rest in measure 33, followed by a half note G4, a quarter note F4, and a half note E4 in measure 34. In measure 35, it features a half note D4, a quarter note C4, and a half note B3, with a slur connecting the last two notes. Measure 36 concludes with a whole note A3. The bass line in the bass clef provides accompaniment with chords: a whole note chord of B3 and D4 in measure 33, a whole note chord of C4 and E3 in measure 34, a whole note chord of B3 and D4 in measure 35, and a whole note chord of A3 in measure 36.



Contact:

stephanbeneking@netscape.net

<http://www.beneking.com>

<https://soundcloud.com/stephan-beneking>

<http://www.twitter.com/StephanBeneking>

<http://www.facebook.com/BenekingPurePiano>

<http://www.youtube.com/user/steveberlin0815>

Stephan Beneking, award-winning composer, is based in Berlin, Germany.

Beneking's original compositions are in neoclassical, classical, romantic, melodic and contemporary modern classical style for piano solo.

His repertoire comprises more than 300 piano works so far and his music is being played by hobby and professional pianists in many countries.

All scores/sheet music can be downloaded for free on <http://www.beneking.com> to make the music available to all interested pianists.

The unique melodies and melancholy in his pieces attract listeners all over the world, even comparing him with the likes of Chopin, Schuman and Schubert. Pianists appreciate the sudden changes, little surprises and sparkling creativity, that make the pieces enjoyable to play.

Beneking's style of "pure piano" means literally "crafted" piano works, that concentrate on the pure melody aspect, while the omission of any tempo, dynamics and pedal markings gives every pianist the possibility to develop his/her own understanding of the work, thus making every single interpretation an unique piece of art, joint product of composer and pianist.

His most successful works so far are the series of 10 Valses melancoliques, of which "Valse melancolique No. VIII - le desir eternel" won the 1st Prize in the international Free-Scores Classical Piano contest in 2013.

Many of his works are called "Rêves" (dreams) or "Petits Rêves" (dreamlets, little dreams) and refer to relatively short musical ideas, even miniatures, like a short musical "breath". Other works were inspired by Nature (Printemps, Little spring, The last flight of the Cranes, Dances on icy waters), Poetry and Myths (Melusine, Valkyries) or the dramatic events of the Shoah (Holocaust Remembrance Suite with Petr Ginz, Kristallnacht, The Kiss and other works).

Beneking mainly composes in series of works with a certain theme or connection, often in combination with a compositional challenge (e.g. compositions for one hand alone, piano works on black or white keys only or „La grande Petitesse“).

Piano compositions by Stephan Beneking

List of works (Overview)

12 Valses melancoliques III – Dance of the Cranes (2015) - ranging from C minor to B minor
24 Valses melancoliques for one hand alone (2014) – 12 for the right and left hand
10 Valses melancoliques for 20 fingers (2014)- arrangements for piano duos
Das kleine Mädchen mit den Schwefelhölzern (2014)
Adveniat (2014) – 24 baroque style pieces for the silent and peaceful advent time
Fleurs de la Nuit (2014) - inspired by floral motifs in romantic melancholic style
„La grande Petitesse et se filles“ (2014) – a pianistical challenge in 8 parts
10 Nocturnes – „Nachtlieder von der Toteninsel“ (2013)
miniatures for giants (2013) – 5 miniatures composed for the Klavins 370i Model
A la recherche du temps perdu (2013) – 7 pieces after the book by Marcel Proust
Zita in Wonderland (2013) – 24 piano compositions for children and beginners
Der Todesreigen - Holocaust Remembrance Suite (2013)
12 Valses melancoliques II - The Swans (2013) - ranging from C minor to B minor
12 Valkyries (2013) - ranging from C minor to B minor
18 Preludes for one hand alone (2012/2013)
Hommage á Bach (2012) – 4 variations on the B-A-C-H-motif
10 Valses melancoliques (2012)
The Black and White Panther (2012) - on black and white keys only
8 Preludes Fantaisies (2012)
3 Dances on icy waters (2012)
Une Fleur, The last flight of the Cranes, Petit Printemps and other works (2012)
24 Petits Rêves bizarres (2011)
Various Rêves, Réveries, Elegies and Phantaisies (1998-2000)
4 Sonates (1998)
12 Nocturnes (1997)
Sonate pour deux pianos (1997)
3 Rêves francaises (1997)
3 Rêves "et in arcadia ego" (1997)
Sprudelnder Geist - sparkling mind (1997)
24 Petits Rêves (1997) - ranging from B flat minor to A major
3 Ballades (1996)
7 Rêves d'Aix-la-chapelle (1996)

Several Albums with recordings of world-class-pianists are available at:

<https://itunes.apple.com/artist/stephan-beneking/id583024858>

<http://open.spotify.com/user/1155850710/playlist/0mMqfTTRqBN4y8Zk798Q3f>

<http://beneking.bandcamp.com>

More information and download links, also for physical CDs, on

<http://www.beneking.com>