

# 音樂短劇-浪子回頭

Cello

CHENG-SHIUN

序曲 (Overture)

♩ = 76

*mp*

5

9

13

3

19

23

26

29

33

3 3 3 3 3 3

36

>>>

40

44

2 2

*rit.*

## 起胎敘 (Prologue)

♩ = 56

52

*mp*

>>>

57

>>>

61

>>>

>>

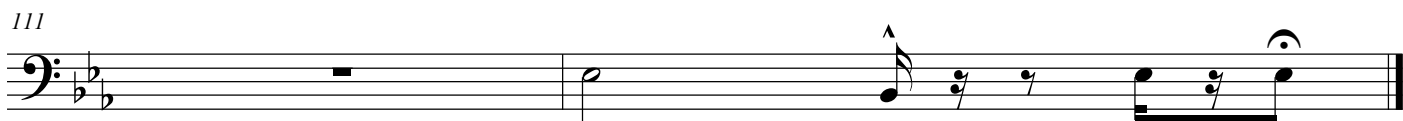
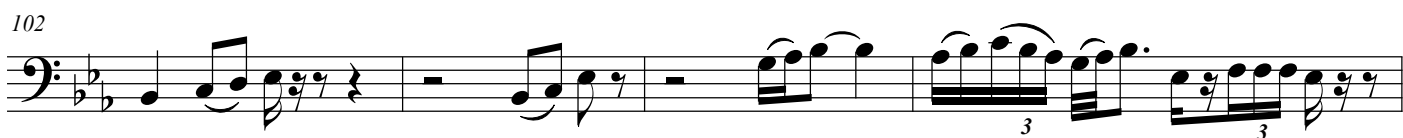
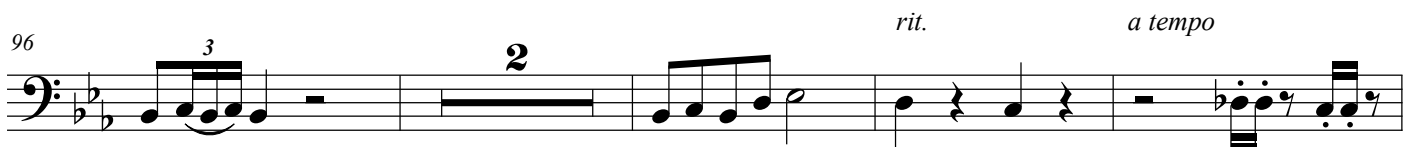
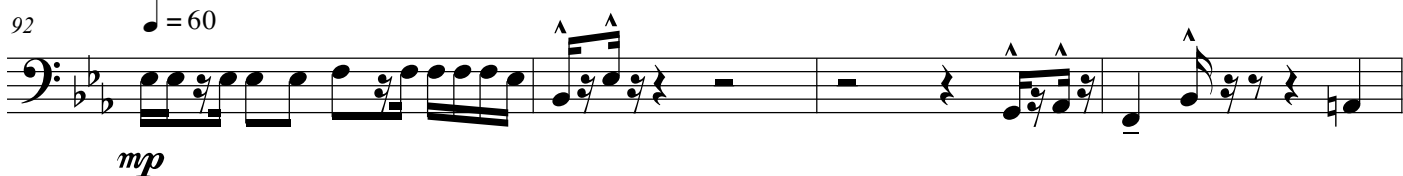
65

>>>

70



## 第一幕 (First Act)



113

*mf*

117

121

124

128

第二幕 (Second Act)

132

$\text{♩} = 40$

*mp*

137

141

145

149

153

154

*mp*

159

164

171

176

*mf* *mp*

第三幕 (Third Act)

188

*f* *f*

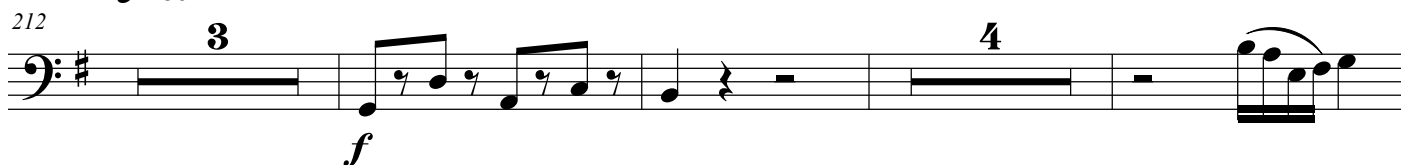
♩ = 80

195

200



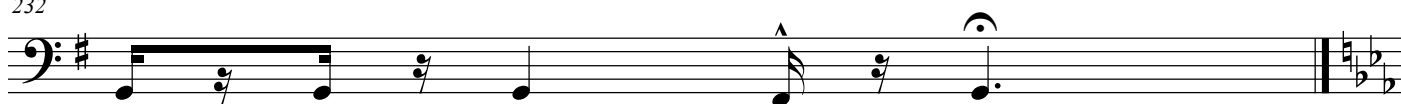
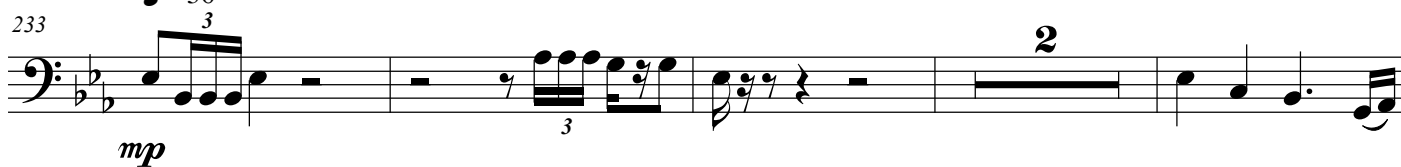
205

212  $\text{♩} = 80$ 

222



232

233  $\text{♩} = 56$ 

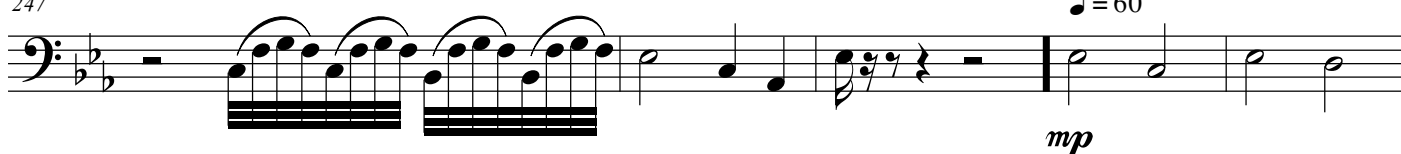
239



243



247



第四幕 (Fourth Act)

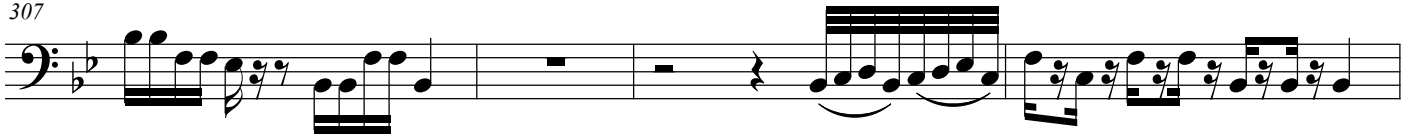
 $\text{♩} = 60$ *mp*



303



307



311



317



## 第五幕 (Fifth Act)

321



326



329

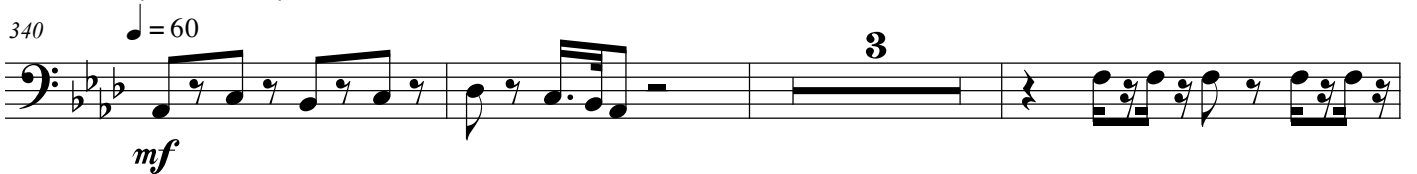


334



## 第七幕 (Seventh Act)

340





346

Musical notation for measure 346, bass clef, key signature of two flats. The measure contains a sequence of eighth notes with slurs and triplets. The first triplet consists of three eighth notes, followed by another triplet of eighth notes, and a final triplet of eighth notes. The measure concludes with a quarter note and a half note.

351

Musical notation for measure 351, bass clef, key signature of two flats. The measure begins with a quarter note, followed by eighth notes with slurs and triplets. It features two triplets of eighth notes, a quarter rest, eighth notes with slurs, a quarter note, and eighth notes with slurs and triplets.

355

Musical notation for measure 355, bass clef, key signature of two flats. The measure starts with a quarter note, followed by a quarter rest, a quarter note, a quarter rest, a quarter note, a quarter rest, and a quarter note.

361

Musical notation for measure 361, bass clef, key signature of two flats. The measure begins with a quarter rest, followed by a half note with a slur, a quarter note with a slur, a quarter note with a slur, and a half note with a slur.