

VIOLA PRIMO.

Lindpaintner, Op. 42.

Andante non troppo lento.

Con Sordini. Viola.

CONCERTINO.

ROMANZE.

Basso pizz. *p*

Violino Solo. *cres* *ff* *ff* *pp*

1

2

3

arco. *fp* *pp*

arco. *pizz.*

*cres.* *pp* *cres.* *pp*

Tutti. Allegretto con moto. *ff*

*pp*

Detailed description of the musical score: This is a page of sheet music for the first viola part of a concertino. The music is in the key of D major and 3/4 time. It begins with a dynamic of *p* and includes various performance instructions such as *Basso pizz.*, *Violino Solo.*, and *arco.*. The score features several measures with first, second, and third endings. Dynamic markings range from *pp* to *ff*. The tempo is marked *Andante non troppo lento.* and *Allegretto con moto.* later in the piece. The score is written in a standard musical notation with a treble clef and a key signature of two sharps (D major).

*pp.* *fi*

*pp*

*ff* *Tutti.* 1 2 3 4 5

*pp* *ff* *p*

*ff* *p*

*ff* *pizz.* *p*

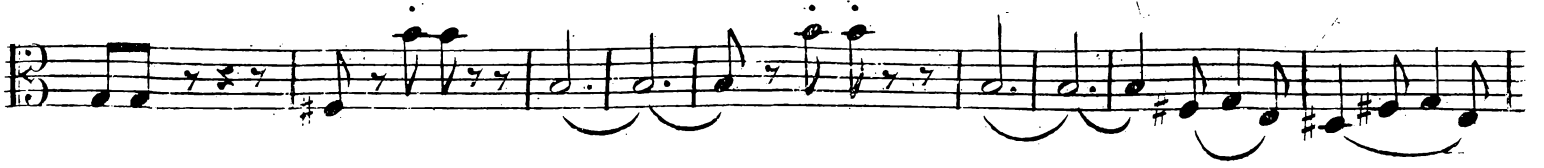
*ff* *p* *arco.* *pp*

*Solo..* *ff* *f* *p* 1 2

*f* *p* *pp* 7

113 a V.S.

VIOLA PRIMO.



Tutti.



Cello. 1

2

p

Viol.

Tempo 1.



VIOLA PRIMO.

ff

Solo. 1 *p* Tutti. *ff*

Solo. 5 *ff* *pp*

Solo.

*pp*

*pp*

*pp*

Tutti. *ff*

V.S.)

VIOLA PRIMO.

Andantino.

Cello. 1 2 *p*

Viol.

*f* *p*

*f* *p* *ff* *pp*

Cadenza.

*pp*

*f* *p*

*pizz.* *p*

*arco.* *ff*

Tutti.

*pizz.* *ff*

*ff* Fine