

Neue Liebliche

Paduanen vnd

Galliarde/mit Fünff Stimm-
men / so zuvor niemals in Druck kom-
men/auff allen Musicalischen Instrumenten;
Insonderheit aber auff Figoli Gamba vnd
Figoli di Braza, artlich zuge-
brauchen.

Componiret durch

BARTHOLOMEUM PRÆ-
torium, Churf. Brandenb. Musi-
cum vnd Cornetisten.

BASSVS.

Cum Gratia & Privilegio.

Gedruckt zu Berlin bey George Kun-
gen / In verlegung Martin Guth / Buch-
hendlern zu Cölln an der Spree/
Anno 1616.

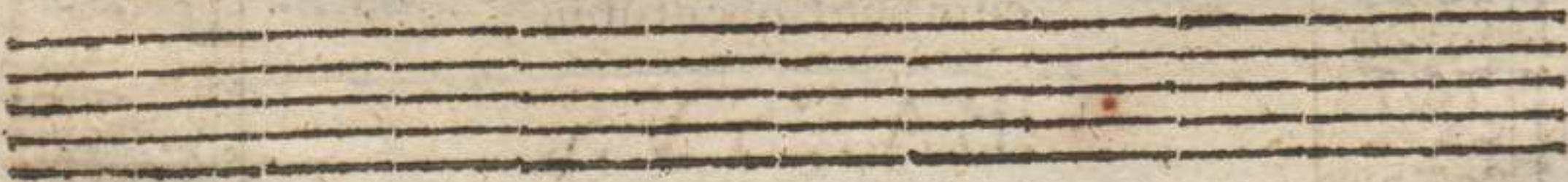
Mus. no. 9891

I.

BASSUS. a. 5.



Paduana.



4

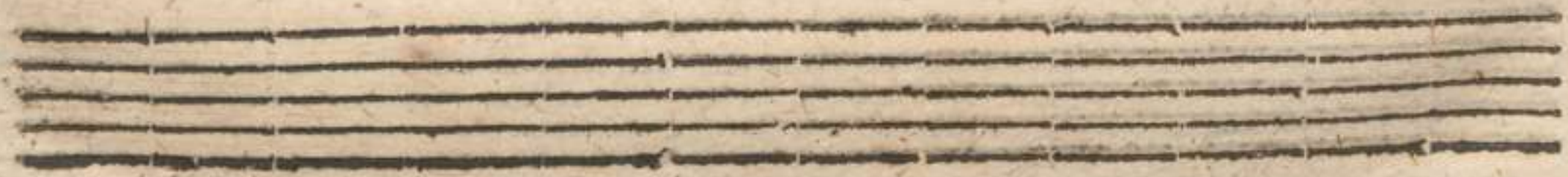
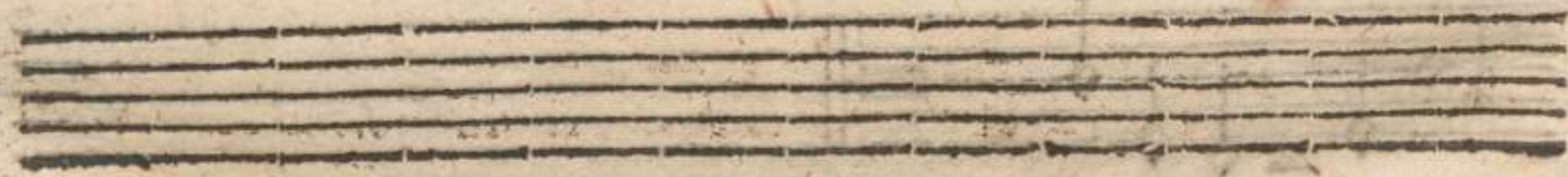
II.

BASSUS. à. 5.

III



Galliard:



Haas ij

III.

BASSUS. à 5.



Paduana.



Paduana

FV.

BASSUS. A. 5.



Galliard:



Aaaa iij



Paduana.

Castaldi



Castaldi

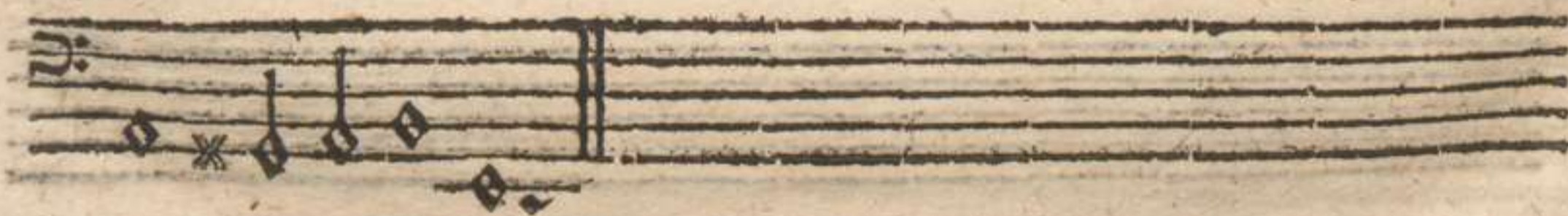
VI.

BASSUS. 3 à 5.

JIV



Galliard:



VII.

BASSUS. à. 5.

171



Paduana.



VIII.

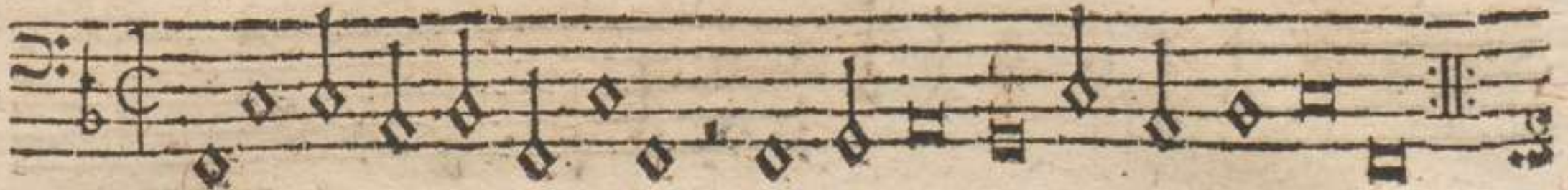
BASSUS. à 5.



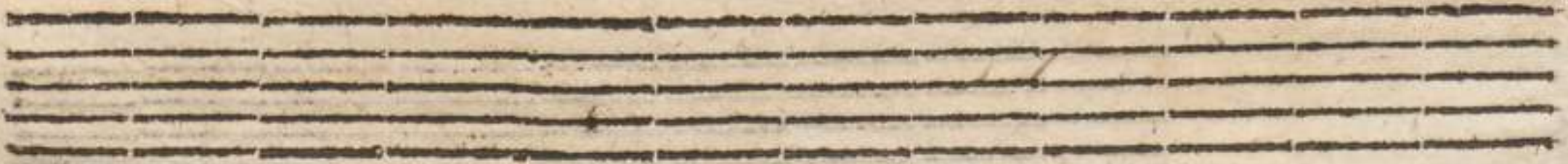
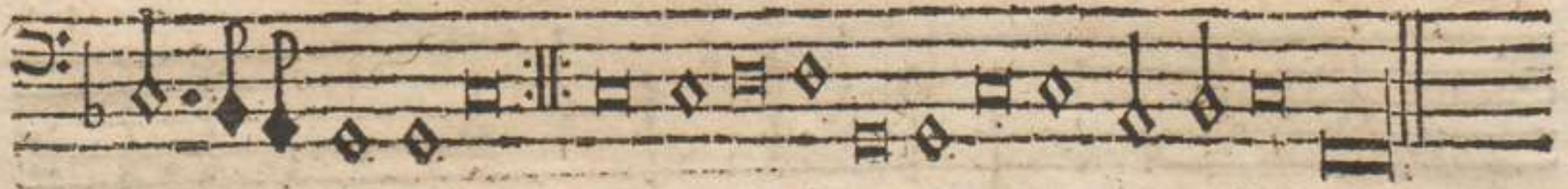
Galliard:



Bbbb



Paduana.



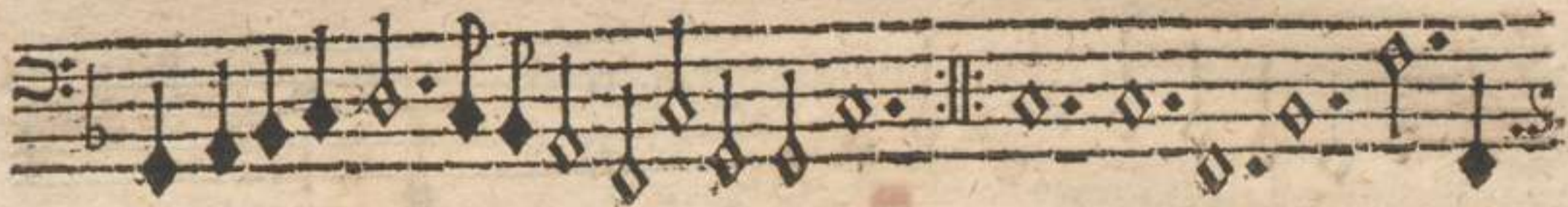
2000

X.

BASSUS. à. 5.



Galliard:



Bbbb ij

XI.

BASSLIS. à. 5.





Galliard:

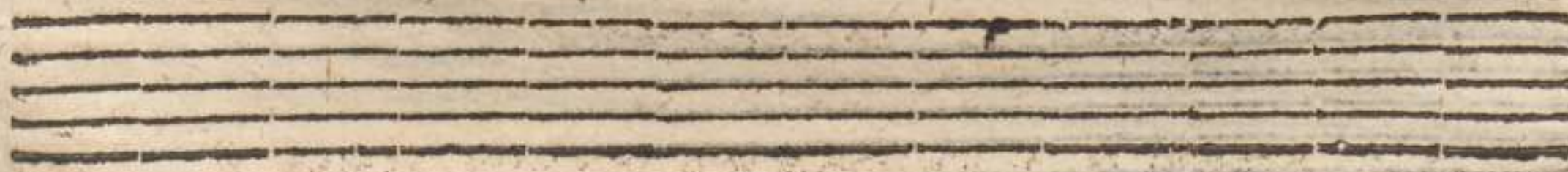
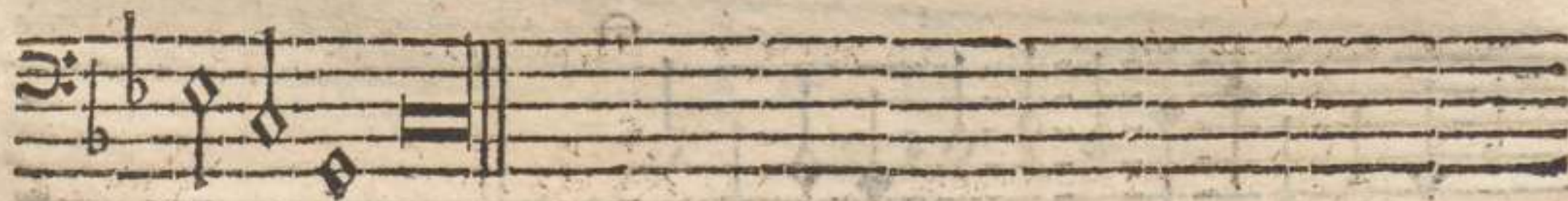
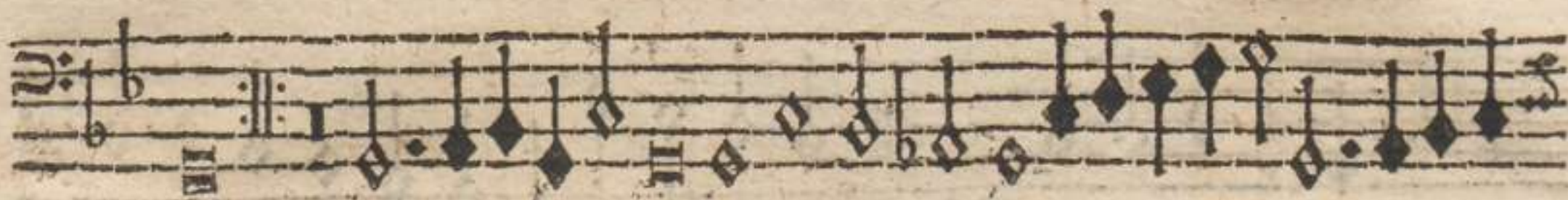


Bbbb iii



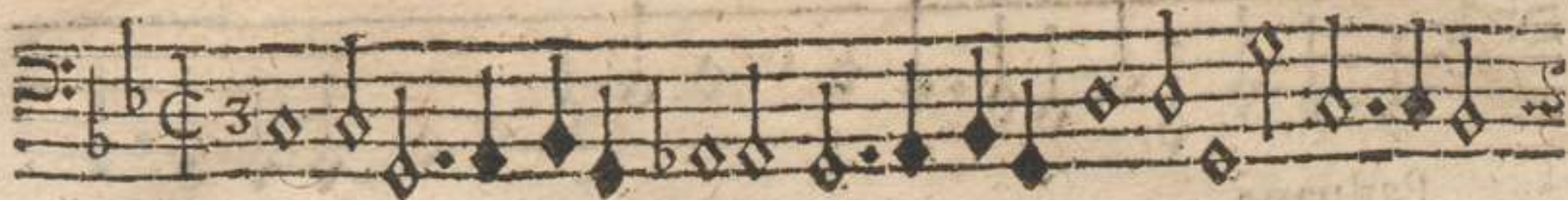


Paduana.

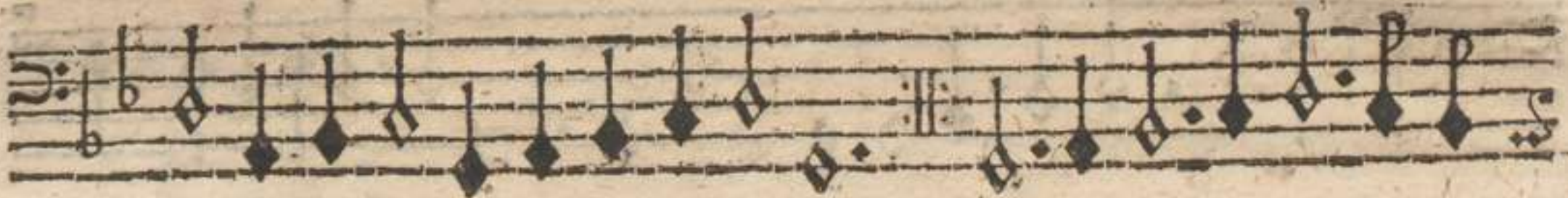


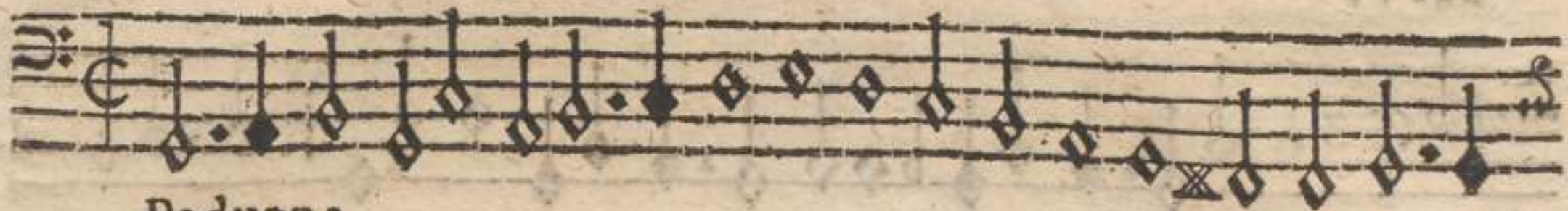
XIV.

BASSUS. à. 5.

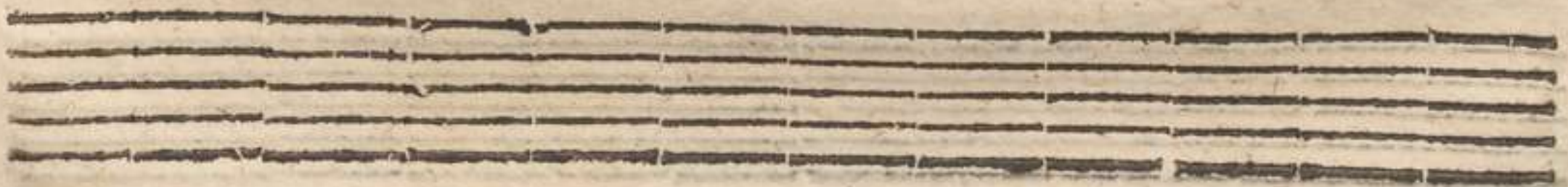
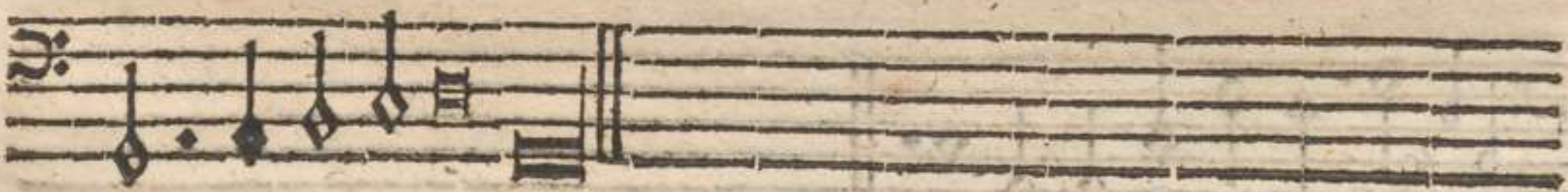


Galliard:





Paduana.

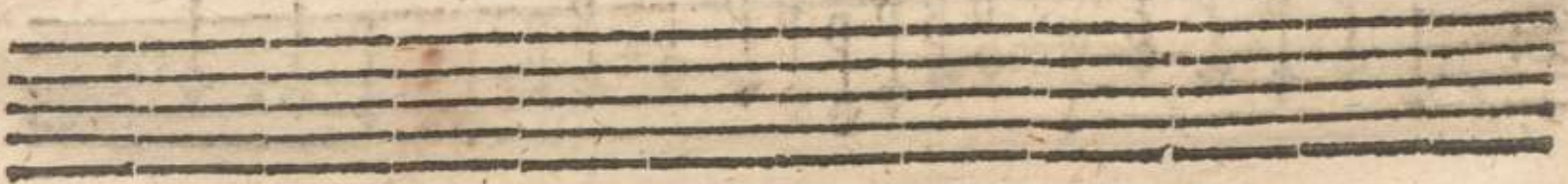


XVI.

BASSUS. à. 5.



Galliard:



CCCC

XVII.

BASSUS. à. 5.



Paduana.

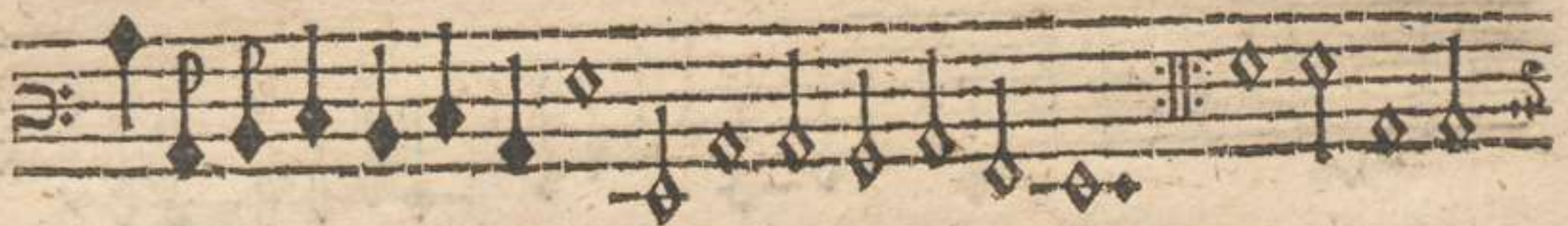


XVIII.

BASSUS. à. 5.



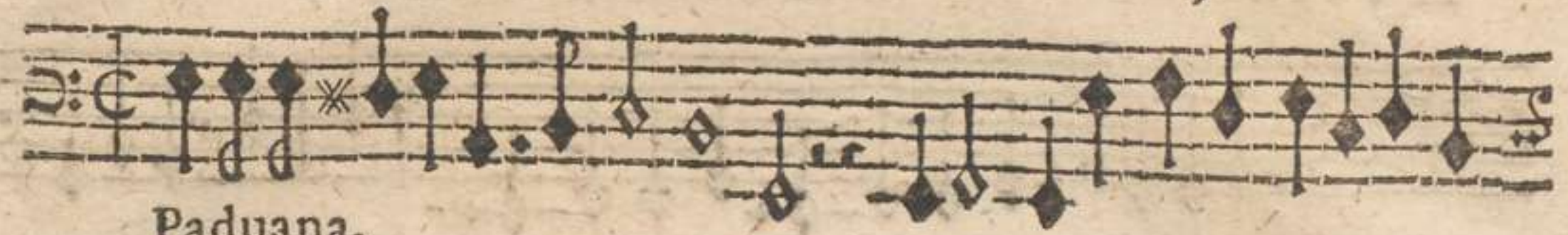
Galliard:



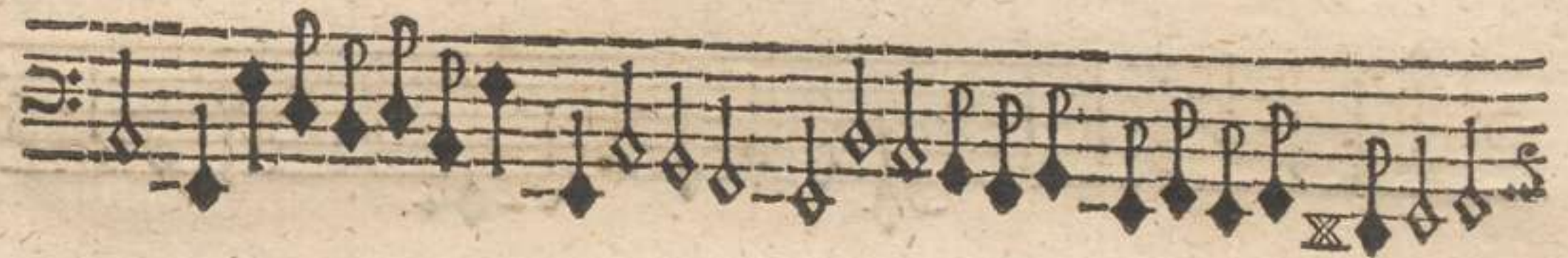
CCC 4

XIX.

BASSUS. à. 5.



Paduana.





Galliard:



XXI.

BASSUS. à. 5.

XX



Paduana.



III. 1773

XXII.

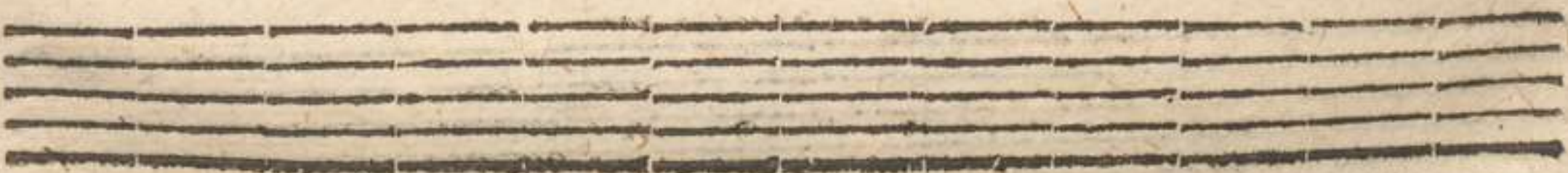
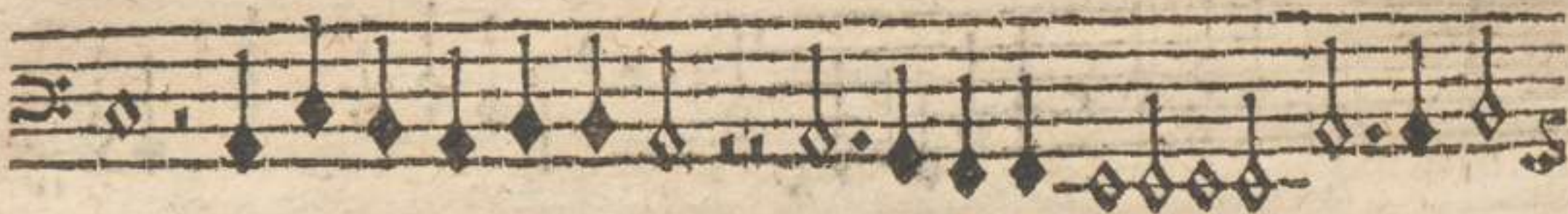
BASSUS.

à 5.

III 27



Galliard:

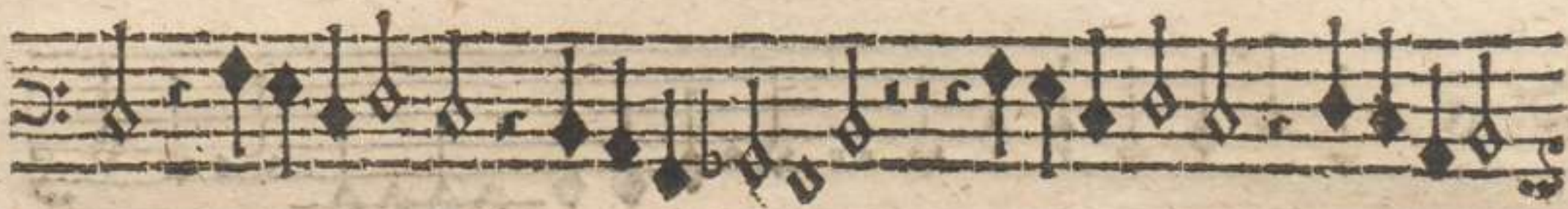


XXIII.

BASSUS. à 5.



Paduana.

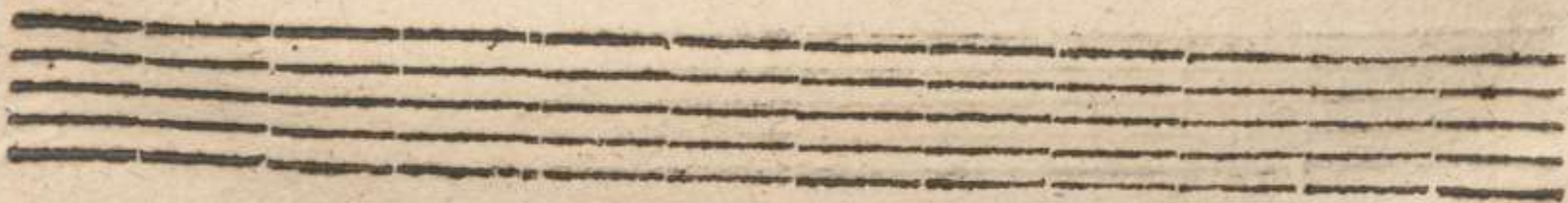


XXIV.

BASSUS. à. 5.



Galliard:



Do do do

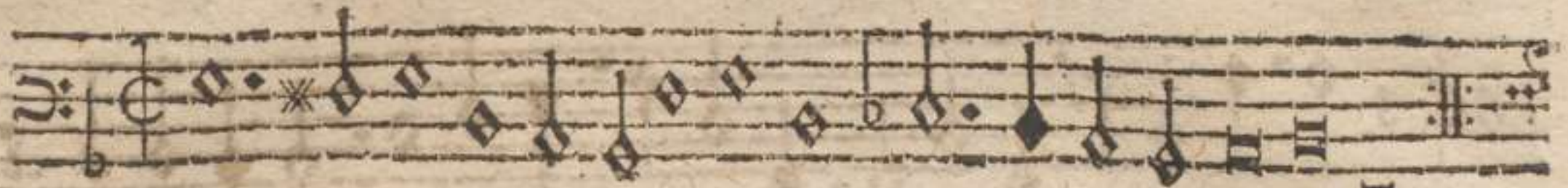
XXV.

BASSUS.

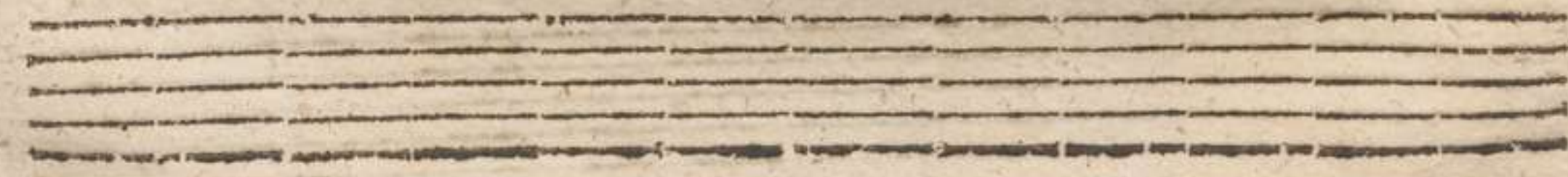
à.

5.

VIII.



Paduana.

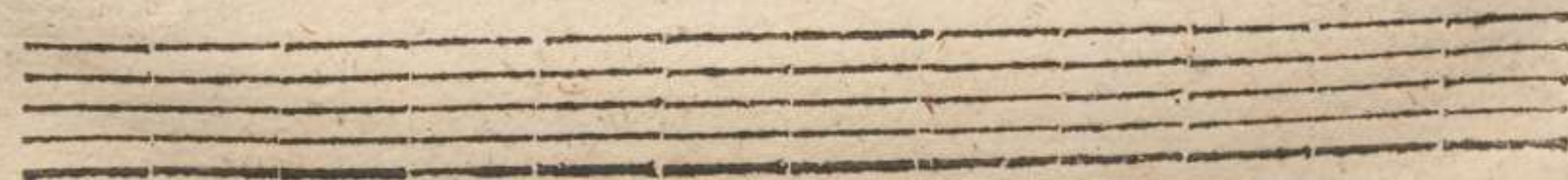


XXVI.

BASSUS. à. 5.



Galliard:



BSB
MÜNCHEN

0001042

BASSIN

XXVI

The page contains five staves of handwritten musical notation. The notation is written in a historical style, likely from the 17th or 18th century. The first staff begins with a clef and a time signature. The notes are written in a dark ink, and the paper shows signs of age, including foxing and a small tear at the bottom left. The notation consists of various note values, stems, and beams, typical of early printed or manuscript notation.