

Concertstück für Bratsche v. Hans Sitt, Op. 46.

Allegro appassionato Trombone I.

2

6

41

riten *Allegro*

12

Corri

Trombi

7

11

riten *Meno mosso*

16

10

riten *Un poco animato*

1

18

1

1

1

Trombone I.

musical staff with notes and dynamic marking *mf*

musical staff with notes, dynamic marking *sf*, and tempo marking *riten:*

musical staff with tempo marking *Andantino.*, time signature $\frac{3}{4}$, and dynamic marking *pp*

musical staff with notes, dynamic marking *f*, and rehearsal mark 23

musical staff with notes, dynamic marking *f*, rehearsal mark 53, and tempo marking *molto riten:*

musical staff with tempo marking *Tempo I* and notes

musical staff with notes, dynamic marking *f*, rehearsal marks 11 and 11, tempo marking *riten*, and *Meno mosso*

musical staff with notes, rehearsal mark 10, tempo marking *riten:*, and *Un poco animato*

musical staff with notes, rehearsal mark 14, dynamic marking *f*, and rehearsal mark 1

musical staff with notes, dynamic marking *mf*, and dynamic marking *f*

musical staff with notes, rehearsal mark 1, and dynamic marking *ff*

Concertstück für Bratsche v. Hans Sitt, Op. 46.

Allegro appassionato. Trombone II.

2 *pp*

6 *p*

41 *riten.* *A a tempo* *B* 11

riten: *Meno mosso* *C* 10 *riten:*

16

Un poco animato *Cor no* 17

f

1

p

p

p

f

1

2.

Trombone II.

mf

riten

Andantino *Cor no* *14*

27 *23* *F* *53*

molto riten: *Tempo I* *7*

11

G *11* *riten:* *Meno mosso.* *15*

Fug: *10* *riten:* *1*

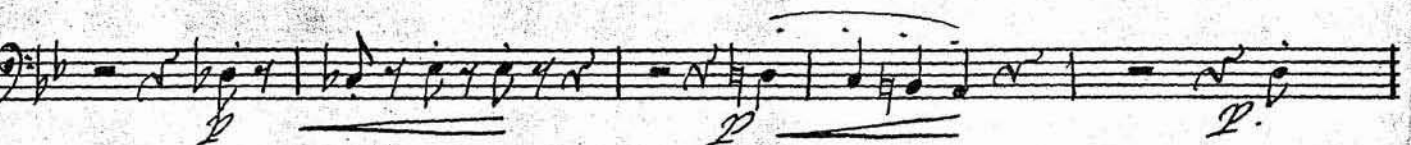
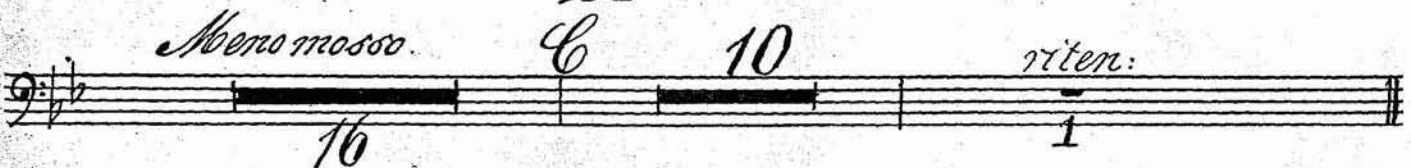
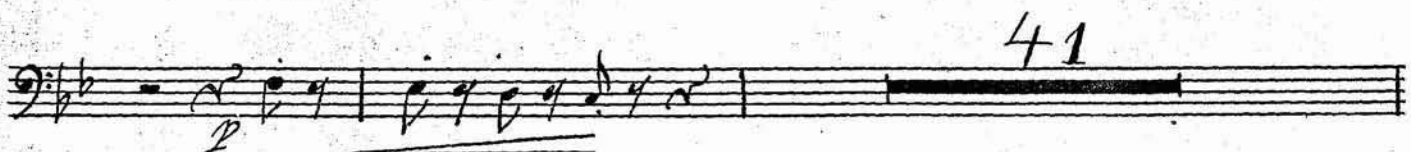
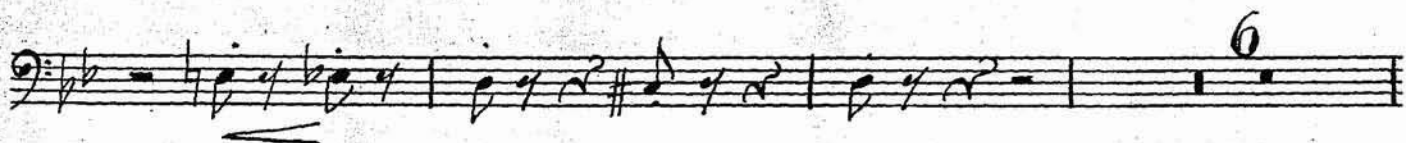
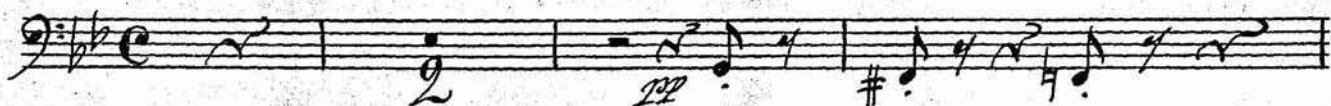
Un poco animato *J* *14* *Fl:* *12*

1 *1* *mf*

1 *f*

Concertstück für Bratsche v. Hans Sitt, Op. 46.

Allegro appassionato Trombone Basso.



2.

Trombone Basso

First staff of music, bass clef, 2/4 time signature. It begins with a series of eighth notes, followed by a half note, and ends with a quarter note. A dynamic marking of *f* is present.

Second staff of music, bass clef, 2/4 time signature. It starts with a quarter rest, followed by eighth notes, and ends with a quarter note. A dynamic marking of *mf* is present.

Third staff of music, bass clef, 2/4 time signature. It features a series of eighth notes, followed by a half note, and ends with a quarter note. A dynamic marking of *f* is present. The staff concludes with a double bar line and a *riten:* marking.

Fourth staff of music, bass clef, 3/4 time signature. It contains a whole note, followed by a half note, and ends with a quarter note. A dynamic marking of *f* is present. The staff includes a *Andantino.* marking and a *Clorno* marking. Measure numbers 27 and 14 are indicated.

Fifth staff of music, bass clef, 2/4 time signature. It features a series of eighth notes, followed by a half note, and ends with a quarter note. A dynamic marking of *pp* is present. A measure number of 23 is indicated.

Sixth staff of music, bass clef, 2/4 time signature. It begins with a quarter rest, followed by eighth notes, and ends with a quarter note. A dynamic marking of *F* is present. The staff includes a *molto riten:* marking and a *Tempo I* marking. Measure numbers 53 and 2 are indicated.

Seventh staff of music, bass clef, 2/4 time signature. It features a series of eighth notes, followed by a half note, and ends with a quarter note. A dynamic marking of *f* is present. Measure numbers 11 and 11 are indicated.

Eighth staff of music, bass clef, 2/4 time signature. It begins with a quarter rest, followed by eighth notes, and ends with a quarter note. A dynamic marking of *riten:* is present. The staff includes a *Meno mosso.* marking and a *riten:* marking. Measure numbers 10 and 16 are indicated.

Ninth staff of music, bass clef, 2/4 time signature. It features a series of eighth notes, followed by a half note, and ends with a quarter note. A dynamic marking of *riten:* is present. The staff includes a *Un poco animato.* marking and a *Clorno* marking. Measure numbers 10 and 16 are indicated.

Tenth staff of music, bass clef, 2/4 time signature. It features a series of eighth notes, followed by a half note, and ends with a quarter note. A dynamic marking of *mf* is present. Measure numbers 1 and 1 are indicated.

Eleventh staff of music, bass clef, 2/4 time signature. It features a series of eighth notes, followed by a half note, and ends with a quarter note. A dynamic marking of *f* is present. Measure numbers 1 and 1 are indicated.