

Lit. Schranck N^o. 1.

G. 24. Fach 15. Lage 9.

Nisi Dominus

à 3. voci

Sopr. Alt. e Ten:

co) Vⁿⁱ Viola ed Org.

Partitura sola
del Sig. Galuppi



| Datum | Name, Stand und Wohnung des Benutzers | Ort der Benutzung | Art der Benutzung (nur eingesehen? – ganz oder teilweise abgeschrieben? – ver- glichen? – abgelenkt?) | Zweck der Benutzung (ist Veröffentlichung beabsichtigt und in welcher Form?) |
|-------|--|----------------------|---|---|
| | M. J. ... | M. J. ... | M. J. ... | M. J. ... |

Allegro
Lisi Gominus.

a 3. Voci.

Con Vary Strumenti Obligati.

Del Sig: Buonello.

Mus. 2389-E-5

(Mus. 2973-D-39)



A handwritten musical score on seven staves. The notation is in a single system, with a common time signature 'C' at the beginning of the first staff. The key signature consists of two sharps (F# and C#). The first staff contains a melodic line with various note values and rests. The second staff has a similar melodic line, ending with a double slash. The third staff continues the melodic line. The fourth, fifth, and sixth staves contain rests, indicating that the instruments for these parts are silent during this section. The seventh staff begins with a circled 'Allo.' marking and contains a melodic line. The paper shows signs of age, including some staining and a faint circular stamp at the bottom center.

A handwritten musical score on aged, yellowed paper. The score consists of several staves of music. The top two staves feature complex, dense musical notation with many notes and rests, some marked with 'e:'. The third staff contains a single melodic line with notes and rests. The fourth and fifth staves are mostly empty, with some faint, illegible markings. The sixth staff contains another single melodic line. The bottom two staves are also empty. The paper shows signs of age, including discoloration and some staining. There are some faint, illegible markings on the page, possibly bleed-through from the reverse side.

Handwritten musical notation on three staves. The top staff begins with a treble clef and a common time signature. The music consists of several measures of notes, including eighth and sixteenth notes, with some slurs and accents. The middle and bottom staves continue the musical composition with similar rhythmic patterns.

Nisi

Nisi nisi Dominus nisi nisi Dominus =

Handwritten musical score on ten staves. The notation includes various rhythmic values, accidentals, and dynamic markings. The text "in uanul labo = uanerunt" is written across the middle staves, and "Difi = cauerit, e = Difi = cauerit Domum" is written at the bottom left. The page number "5" is at the bottom center.

Handwritten musical score on a page with ten staves. The top six staves contain instrumental parts with various dynamics like "f." and "ff.". The bottom two staves contain a vocal line with Latin lyrics: "venunt qui edificavit am" and "hinc nifi Dominus edificavit". The page is numbered "6" at the bottom center.

Handwritten musical notation on a five-line staff. The notes are mostly eighth and sixteenth notes. The text "Con Canto" is written in cursive to the right of the staff.

Handwritten musical notation on a five-line staff. The notes are mostly eighth and sixteenth notes. The text "Con l'alto alla Balsa" is written in cursive to the right of the staff.

Handwritten musical notation on a five-line staff. The notes are mostly eighth and sixteenth notes.

Handwritten musical notation on a five-line staff. The notes are mostly eighth and sixteenth notes. The text "Sifi = cauevit Domus" is written in cursive below the staff. There are two large red circles drawn over the staff, one under the first measure and one under the second measure.

Handwritten musical notation on a five-line staff. The notes are mostly eighth and sixteenth notes.

Handwritten musical notation on a five-line staff. The notes are mostly eighth and sixteenth notes. The text "Domum" is written in cursive below the staff. There is a large red circle drawn over the staff. The text "in uanul labora = ue =" is written in cursive to the right of the staff.

Col. Quarto

Col. alto

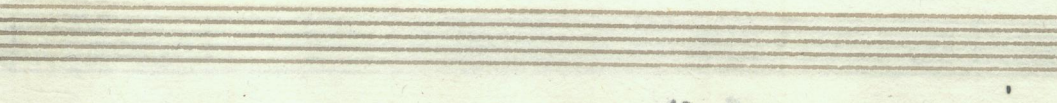
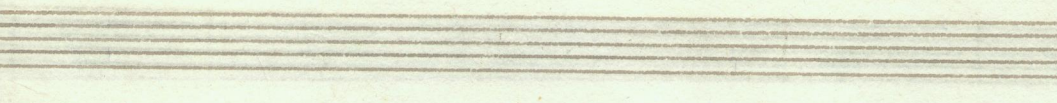
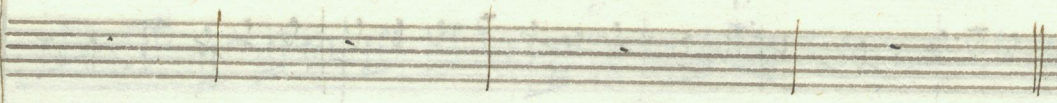
vunt

vunt

vunt

vunt *ges ed: = fi = carot*

in uanu? labora = uevunt labora = uevunt qui e = difificant eam.
 e = am in uanu? laborauevunt laborauevunt qui e = difificant eam.



Vida d' Amor. 

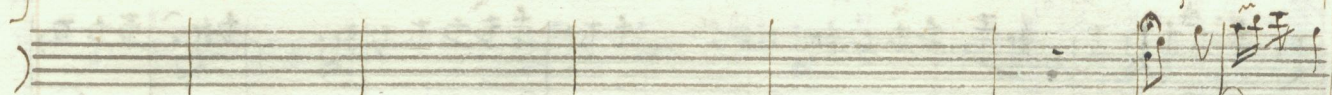
Alto solo. 

Violini soli *All.* 









Messa Domini
Org. Solo 

custo = Dievit Cui = tatem frustra vigilat qui custo =

rit e = am.

Violini Soli

nisi Dominus custo = Dievit Cui = tatem custo = Dievit Cui = tatem frustra vigilat

Org. Solo

qui cu = sto =

Dit e = am qui cu = sto = Dit e = am.

Da Capo al segno
fino al segno.

Handwritten musical notation on a five-line staff, featuring a treble clef, a key signature of one sharp (F#), and a 2/4 time signature. The music consists of a series of eighth and sixteenth notes, with some beamed groups.

Handwritten musical notation on a five-line staff, featuring a treble clef, a key signature of one sharp (F#), and a 2/4 time signature. The music consists of a series of eighth and sixteenth notes, with some beamed groups.

Handwritten musical notation on a five-line staff, featuring a treble clef, a key signature of one sharp (F#), and a 2/4 time signature. The music consists of a series of eighth and sixteenth notes, with some beamed groups.

Handwritten musical notation on a five-line staff, featuring a treble clef, a key signature of one sharp (F#), and a 2/4 time signature. The music consists of a series of eighth and sixteenth notes, with some beamed groups.

Handwritten musical notation on a five-line staff, featuring a treble clef, a key signature of one sharp (F#), and a 2/4 time signature. The music consists of a series of eighth and sixteenth notes, with some beamed groups.

Handwritten musical notation on a five-line staff, featuring a treble clef, a key signature of one sharp (F#), and a 2/4 time signature. The music consists of a series of eighth and sixteenth notes, with some beamed groups.

Handwritten musical notation on a five-line staff, featuring a treble clef, a key signature of one sharp (F#), and a 2/4 time signature. The music consists of a series of eighth and sixteenth notes, with some beamed groups.

Handwritten musical notation on a five-line staff, featuring a treble clef, a key signature of one sharp (F#), and a 2/4 time signature. The music consists of a series of eighth and sixteenth notes, with some beamed groups.

Handwritten musical notation on a five-line staff, featuring a treble clef, a key signature of one sharp (F#), and a 2/4 time signature. The music consists of a series of eighth and sixteenth notes, with some beamed groups.

Handwritten musical notation on a five-line staff, featuring a treble clef, a key signature of one sharp (F#), and a 2/4 time signature. The music consists of a series of eighth and sixteenth notes, with some beamed groups.

Come

Handwritten musical notation on a single staff, featuring a series of notes and rests.

semivome

Handwritten musical notation on a single staff, featuring a series of notes and rests.

semivome

Handwritten musical notation on a single staff, featuring a series of notes and rests.

crome

Handwritten musical notation on a single staff, featuring a series of notes and rests.

Vanu est ubi an = ta lu = cam sur = gere Surgite

Handwritten musical notation on a single staff, featuring a series of notes and rests.

Handwritten musical notation on a single staff, featuring a series of notes and rests.

Handwritten musical notation on a single staff, featuring a series of notes and rests.

Handwritten musical notation on a single staff, featuring a series of notes and rests.

Handwritten musical notation on a single staff, featuring a series of notes and rests.

Handwritten musical notation on a single staff, featuring a series of notes and rests.

de = gual se = Paritij qui manduca =

This page contains a handwritten musical score on aged, yellowed paper. The score is organized into two systems, each consisting of a grand staff (treble and bass clefs) and a single-line staff below. The notation includes various musical symbols such as notes, rests, and chords. There are several annotations in the score:

- At the top of the first system, there are markings "p_e" and "cvo:".
- At the top of the second system, there are markings "p_e" and "cvo:".
- Between the two systems, there is a line with the text "fa = nem do = lo =".
- At the bottom of the second system, there is another line with the text "fa = nem do = lo =".

The paper shows signs of age, including some staining and discoloration, particularly on the right side.

Semivoma
 voma
 Vanus est nobis an = ta lu = cem sur = ge =
 re surgite qui se = derunt qui manduca =

vome

vome

nem

lo =

qui marduca =

Col Bajo

Col Bajo

Col Bajo

Handwritten musical score for the first system, consisting of five staves. The top staff is in treble clef with a key signature of one sharp (F#) and a common time signature (C). It contains a melodic line with notes and rests, and the instruction "vo. tr." is written below it. The second staff is a grand staff (treble and bass clefs) with a slash through the bass staff, indicating it is not to be played. The third staff is a grand staff with a treble clef and a key signature change to two sharps (F# and C#). It contains a complex melodic line with many beamed notes and accidentals, with the instruction "p. s.; cro." written below. The fourth staff is a grand staff with a treble clef and a key signature of one sharp (F#), with the instruction "piano" and a dynamic marking "ff = lo =". The fifth staff is a grand staff with a treble clef and a key signature of one sharp (F#), with the instruction "piano" and a dynamic marking "ff = lo =".

Handwritten musical score for the second system, consisting of five staves. The top staff is in treble clef with a key signature of one sharp (F#) and a common time signature (C). It contains a melodic line with notes and rests. The second staff is a grand staff (treble and bass clefs) with a slash through the bass staff. The third staff is a grand staff with a treble clef and a key signature of one sharp (F#). The fourth staff is a grand staff with a treble clef and a key signature of one sharp (F#), with the instruction "piano" and a dynamic marking "ff = lo =". The fifth staff is a grand staff with a treble clef and a key signature of one sharp (F#), with the instruction "piano" and a dynamic marking "ff = lo =".

Salmò

Violini I & II

Alto Solo

Organo Solo

Cum sedent de = lee = tij sij som = mel de lee = tij
 Taffo Solo

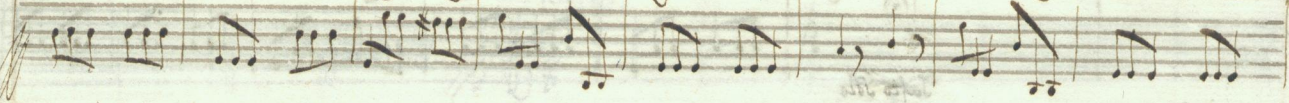
sij som = num ecce ha ve = di = tal Domini Fili = j marces huc =



Basso



— tij ver = — tij fructus ver = — tij. Cum dedit



lecey ruy som = — — — — — num ecce haec = Dicit Domini



Handwritten musical score for the first system. It consists of three staves. The top staff is a vocal line with lyrics: *Fili merceſ fructy ventiy fili merceſ fructy ventiy fructy*. The middle and bottom staves are instrumental parts. The music is written in a historical style with various note values and rests.

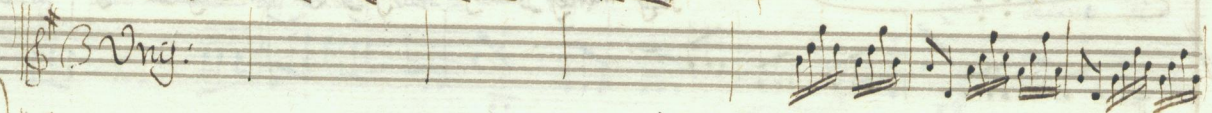
Handwritten musical score for the second system. It consists of three staves. The top staff is a vocal line with lyrics: *ver = triy fructy ver = triy*. The middle and bottom staves are instrumental parts. The music continues with similar notation to the first system.

Ritornello da Capo

Violini. *Allegro* 3/4

Handwritten musical notation for Violini, first system. The staff is in treble clef with a key signature of one sharp (F#) and a 3/4 time signature. The music consists of several measures of eighth and sixteenth notes, some beamed together.

Vng. 3/4

Handwritten musical notation for Vng., first system. The staff is in treble clef with a key signature of one sharp (F#) and a 3/4 time signature. The music consists of several measures of eighth and sixteenth notes, some beamed together.

Tromba marina 3/4

Handwritten musical notation for Tromba marina, first system. The staff is in treble clef with a key signature of one sharp (F#) and a 3/4 time signature. The music consists of several measures of eighth and sixteenth notes, some beamed together.

Viola 3/4

Handwritten musical notation for Viola, first system. The staff is in treble clef with a key signature of one sharp (F#) and a 3/4 time signature. The music consists of several measures of eighth and sixteenth notes, some beamed together.

Tenor solo 3/4

Handwritten musical notation for Tenor solo, first system. The staff is in treble clef with a key signature of one sharp (F#) and a 3/4 time signature. The music consists of several measures of eighth and sixteenth notes, some beamed together.

Allegro 3/4

Handwritten musical notation for Allegro, first system. The staff is in treble clef with a key signature of one sharp (F#) and a 3/4 time signature. The music consists of several measures of eighth and sixteenth notes, some beamed together.

Handwritten musical notation on a five-line staff, featuring a treble clef and a series of notes and rests.

Handwritten musical notation on a five-line staff, featuring a treble clef and a series of notes and rests.

Handwritten musical notation on a five-line staff, featuring a treble clef and a series of notes and rests.

Handwritten musical notation on a five-line staff, featuring a treble clef and a series of notes and rests.

Handwritten musical notation on a five-line staff, featuring a treble clef and a series of notes and rests.

Handwritten musical notation on a five-line staff, featuring a treble clef and a series of notes and rests.

Sicut sa-gitta in manu go-terij i=

Handwritten musical score on six staves. The notation includes treble clefs, a key signature of one sharp (F#), and various rhythmic values such as eighth and sixteenth notes, as well as rests and slurs. There are also some handwritten annotations like "tr" and "f".

Lyrics: *ta fili = j* *exce = so =*

A handwritten musical score on six staves. The notation includes various rhythmic values, accidentals, and dynamic markings. The first staff begins with a treble clef and a key signature of one sharp (F#). The music features complex rhythmic patterns, including sixteenth and thirty-second notes, and rests. A double bar line with repeat dots appears in the third measure of the first staff. The second staff continues the melodic line with similar rhythmic complexity. The third staff contains a large, stylized handwritten symbol, possibly a signature or a specific instruction, followed by a double bar line. The fourth staff begins with a treble clef and a key signature of one sharp, and contains more complex rhythmic notation. The fifth staff continues the piece with similar notation. The sixth staff features a dynamic marking of *f* (forte) and includes the handwritten text "nem" and "exce = so =". The score concludes with a double bar line and a final note.

Handwritten musical score on six staves. The top two staves contain dense rhythmic patterns. The third staff is labeled "Calpurnio". The fourth staff contains rhythmic notation. The fifth staff has a few notes. The sixth staff contains the Latin text "num. sicut sagitte in manu po = tentij ita filij" with corresponding musical notation.

p
f
alto viva

excu = vo =

Handwritten musical score for Trombe Marine and Viola. The Trombe Marine part is in G major and features a melodic line with eighth and sixteenth notes. The Viola part is in G major and consists of a rhythmic accompaniment of eighth notes.

rum sicut sa = gitte in manu go = tentis in manu go = tentis go =

Handwritten musical score for a vocal line with Latin lyrics. The lyrics are "rum sicut sa = gitte in manu go = tentis in manu go = tentis go =". The music is in G major and features a melodic line with eighth and sixteenth notes.

Handwritten musical score on six staves. The first four staves contain vocal lines in G major (one sharp). The fifth staff is a piano accompaniment with a complex rhythmic pattern. The sixth staff contains lyrics: "ty ita fili = j excu = so =". The music is written in a historical style with various note values and rests.

Handwritten musical score on six staves. The notation includes various rhythmic values, accidentals, and dynamic markings. The bottom staff contains the text "Vum exek = so = vum" and "Da Bayo al segno // sino al segno".

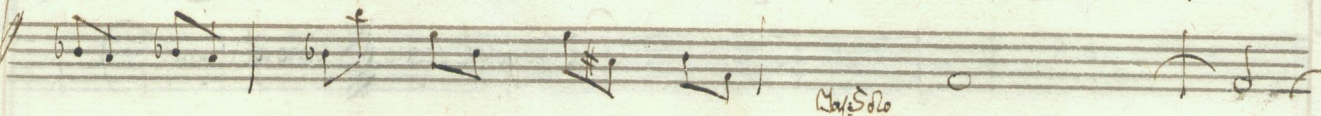
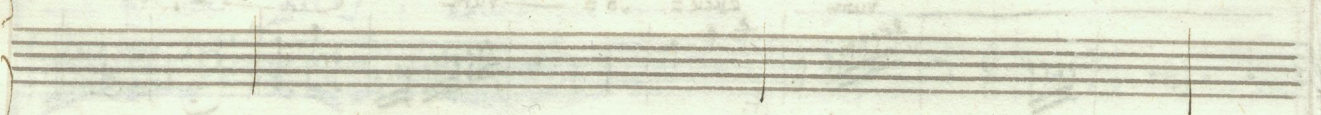
Violoncello Solo



Canto Solo.



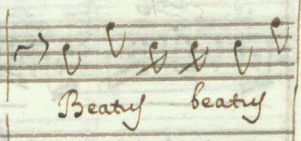
Organo Solo



Organo Solo



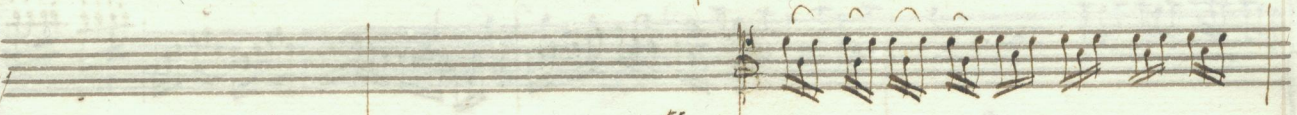
Handwritten musical notation on a five-line staff, featuring dense sixteenth-note passages and a treble clef with a B-flat key signature.



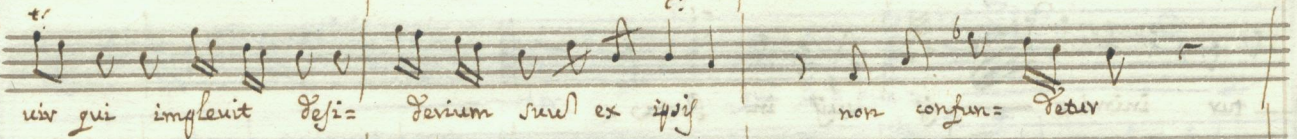
Handwritten musical notation on a five-line staff, showing a melodic line with eighth notes and a "Beaty beaty" annotation.



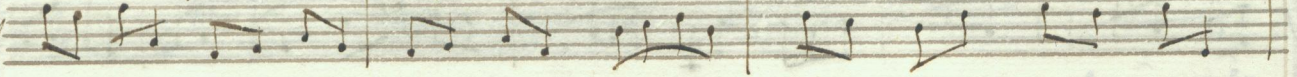
Handwritten musical notation on a five-line staff, showing a melodic line with quarter and eighth notes.



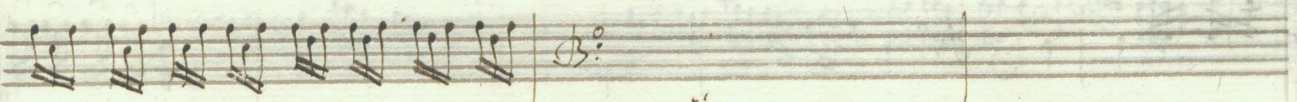
Handwritten musical notation on a five-line staff, featuring dense sixteenth-note passages.



Handwritten musical notation on a five-line staff with lyrics: uir qui impleuit Sepi= Seruum suu ex ipis non confun= Peter



Handwritten musical notation on a five-line staff, showing a melodic line with quarter notes.



Handwritten musical notation on a five-line staff, featuring dense sixteenth-note passages and a treble clef with a B-flat key signature.



Handwritten musical notation on a five-line staff with lyrics: qui lo= que=



Handwritten musical notation on a five-line staff, showing a melodic line with quarter notes and a key signature change to one sharp.

tur inimi = cū suis in Porta.

Be = atus beatus uirgi impleuit laci = terium suū ex ipis non conuen =

Handwritten musical score on aged paper, featuring multiple staves of music and lyrics. The score is written in black ink on a yellowed, aged paper. The music is arranged in systems, with lyrics written below the vocal lines. The lyrics include "Terce" and "qui loque =". The notation includes various musical symbols such as clefs, notes, rests, and bar lines. There are some markings above the notes, possibly indicating fingerings or breath marks. The paper shows signs of age, including discoloration and some faint smudges.

tur inimi = cy ruy in porta qui lo =

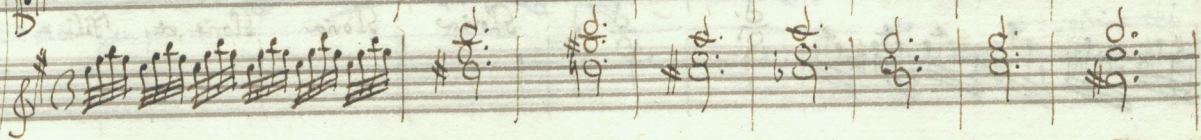
tur ini = mi = cy ruy in porta.

Ritornello La Base al segno

Larghetto.



Organo
obbligato.



Larghetto



Handwritten musical score on aged paper. The score consists of several staves. The top three staves contain rhythmic patterns, possibly for a keyboard instrument, with dynamic markings *pp* and *ppp*. The fourth staff contains a vocal line with lyrics: *Gloria Gloria Gloria, et Fili = o*. The fifth staff contains a bass line. The sixth staff contains a treble line with a complex rhythmic pattern. The paper shows signs of age, including discoloration and some faint markings.

Handwritten musical score on aged paper, featuring six staves of music. The notation includes various rhythmic values, accidentals, and dynamic markings. The bottom staff contains the text "san =", "to", "pp.", "Floria", and "Pati".

Handwritten musical score for four staves. The first three staves contain rhythmic patterns of eighth and sixteenth notes. The fourth staff contains a vocal line with lyrics written below it.

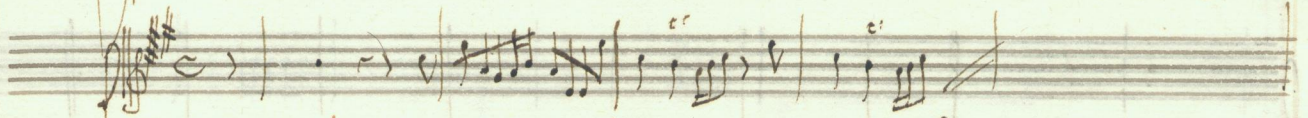
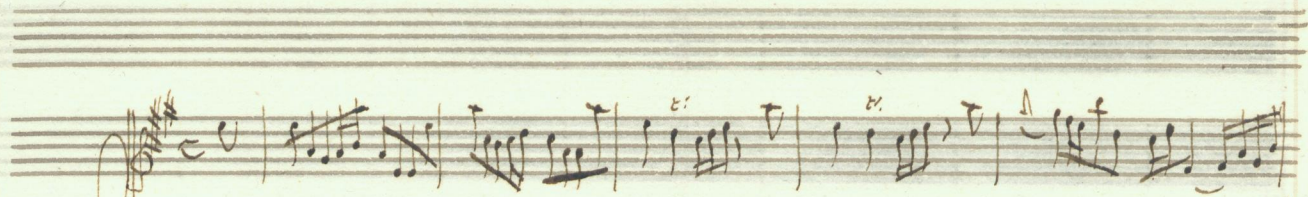
Ro-na, et Fi-li = o et spi-ri-tui san-cto

et spiri = tui san = cto spi = riti = a = Pa = tri =

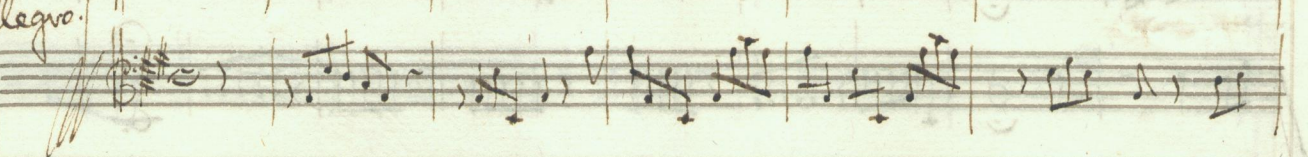
A handwritten musical score on aged, yellowed paper. The score consists of several staves. The top three staves feature rhythmic patterns of vertical lines, possibly representing a keyboard instrument. The fourth staff contains a melodic line with notes and rests. Below this, a line of lyrics is written in a cursive hand: "tri, et Filio et spi-ritui san-cto et spi-". The bottom two staves continue with rhythmic patterns. The paper shows signs of age, including some staining and a large diagonal crease on the left side.

Handwritten musical score on aged paper, featuring multiple staves. The top three staves contain rhythmic patterns, likely for a keyboard instrument, consisting of groups of notes with stems pointing upwards. The middle section contains a vocal line with Latin lyrics: *ritui san = cto. et spi = ri = tui san =*. The bottom staff contains rhythmic patterns, including a group of notes with stems pointing downwards. The paper shows signs of age, including yellowing and some staining.

cto, et spi-ritui sancto.
pianissimo
piano



Allegro.



Handwritten musical score on six staves. The top two staves contain complex melodic lines with many beamed notes. The middle two staves are mostly empty with some faint markings. The bottom two staves contain rhythmic patterns and some text annotations.

Sicut

Sicut

Sicut erat in princi = pio *sicut*

et in saecula saeculorum
 et in saecula saeculorum
 erat in princi = pio, et nunc et semper et in saecula saeculorum

Handwritten musical score consisting of seven staves. The notation includes complex rhythmic patterns with many beamed notes, suggesting a fast or intricate piece. The fourth and fifth staves appear to be vocal lines with fewer notes and some rests. The seventh staff contains lyrics and musical notation.

Lovuſ a = ————— men et in ſecla ſecl = Lovum a = —————

Col Canto

Col l'alto alla Bassan

B

men a = men et in men et in men et in sequa sequ = loru a =

Col Canto
Cont' alto alla Bassa

men amen

men a = men amen et in secula seculi a =

men amen sequ = loqu' a =

Handwritten musical score for a string quartet, measures 1-2. The score is written on seven staves. The first staff is the Violin I part, the second is Violin II, the third is Viola, the fourth is Violoncello, and the fifth is Contrabasso. The sixth and seventh staves are empty. The music is in 2/4 time. The first measure contains a half note chord in each part. The second measure contains a half note chord in each part, with a fermata over the final chord. The word "men." is written above the first measure of the fifth staff.

Finis

A page of handwritten musical notation on ten staves. The notation is very faint and mostly illegible. A vertical bar line is drawn across the staves, roughly in the middle of the page. There are some faint notes and markings on the staves, particularly on the upper ones. The paper is aged and yellowed.

Sächs. Landesbibliothek
Depositar der
Kath. Hofkirche

(2973)
D 139
Mus. 2389-E-5

