

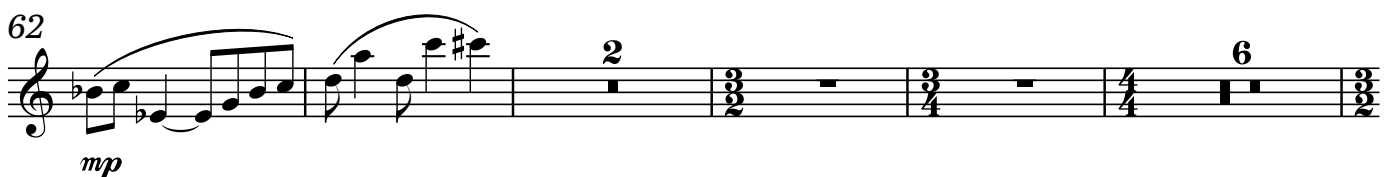
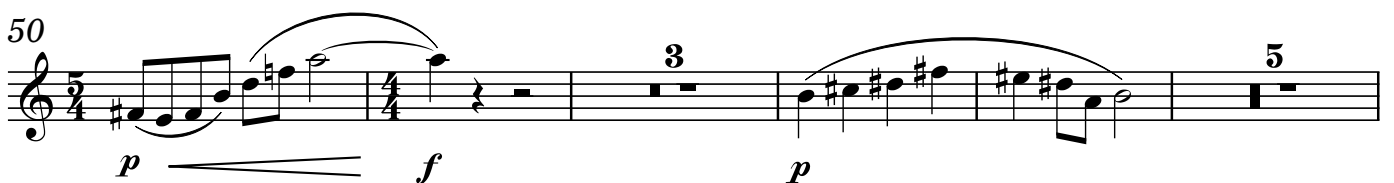
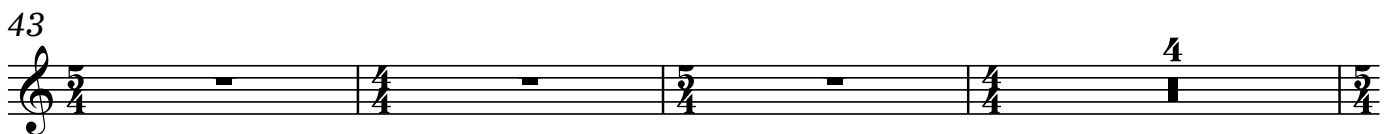
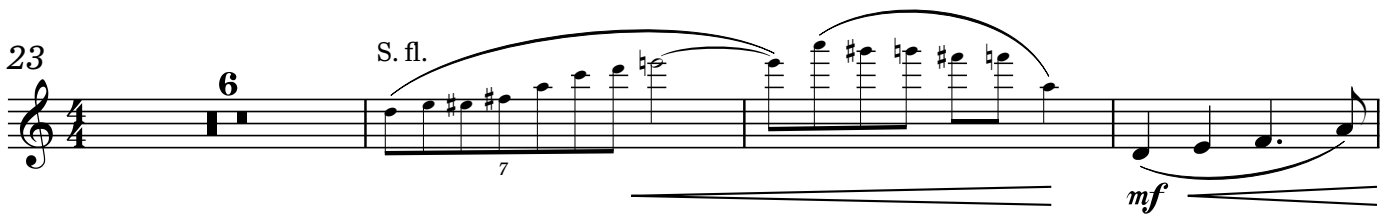
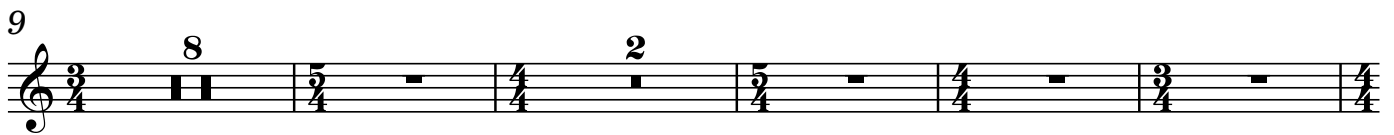
Breathing through the Grass

a concerto for flute and orchestra

I.

Allegro appassionato ♩ = 108

Tamás Beischer-Matyó



Oboe 1

2

74 S. fl.

f

77

82

p

88

95

mp

102

p

122 Vlns. I-II, Vls.

f

127

p

ff

140

mf

149

sfz \curvearrowright *p*
mf \curvearrowright *p*

162

S. fl.

f
ff
f

167

f
ff
f
ff

171

f
ff
f
ff

175

p
pp
p
pp

182

f \curvearrowright *pp*

II.

Adagio cantabile ♩ = 56

Cl.+Vlins. II

28

p

30

p

31

p rit. a tempo

43

Ob. 2

p *pp* *pp* *pp*

48

rit. Poco agitato ♩ = 80

57

Cl. Marimba

pp *pp* *pp* *p*

60

p *p* *p* *p*

68 *rall.*

Adagio cantabile ♩ = 56 *accel.*

72 *p* *pp* *p* *pp*

78 **Poco agitato** ♩ = 80 *p*

83 *rall. molto* **Adagio cantabile** ♩ = 56

2 37

III.

Allegro grazioso ♩ = 168

3 2 3

11 *s. fl.* *tr.* *ff*

15

19 2

23 2 5

Oboe 1

6

32 Cl. *p* *mf* *f*

36

45 *p*

52

59 14 *pp*

77 *rit.* . . . **Vivace** ♩. = 132 *ff*

83

88 *p*

Oboe 1

97 Tpt.+Trb. S. fl. Tpt.+Trb.

ff

Detailed description: This staff contains measures 97 through 102. It begins with a rest for measures 97 and 98. In measure 99, there is a dynamic marking of *ff*. The music features a series of chords and melodic lines, with a prominent sixteenth-note run in measure 100. The key signature has one flat, and the time signature is 6/8.

103 S. fl.

p

Detailed description: This staff contains measures 103 through 108. It starts with a dynamic marking of *p*. The music continues with melodic and harmonic development, including a sixteenth-note run in measure 104. The key signature has one flat, and the time signature is 6/8.

109

Detailed description: This staff contains measures 109 through 117. The music features a series of eighth and sixteenth notes, with a triplet of eighth notes in measure 116. The key signature has one flat, and the time signature is 6/8.

118

p

Detailed description: This staff contains measures 118 through 124. It begins with a dynamic marking of *p*. The music consists of eighth and sixteenth notes, with a triplet of eighth notes in measure 118. The key signature has one flat, and the time signature is 6/8.

125

Detailed description: This staff contains measures 125 through 129. The music features a series of eighth and sixteenth notes, with a triplet of eighth notes in measure 125. The key signature has one flat, and the time signature is 6/8.

130 S. fl.

f

Detailed description: This staff contains measures 130 through 137. It starts with a dynamic marking of *f*. The music features a complex sixteenth-note run in measure 130, marked with 'x' symbols. The key signature has one flat, and the time signature is 6/8.

138

Detailed description: This staff contains measures 138 through 142. The music features a series of eighth and sixteenth notes, with a triplet of eighth notes in measure 138. The key signature has one flat, and the time signature is 6/8.

143 *poco a poco rall.* **Allegro grazioso** ♩ = 168

pp

Detailed description: This staff contains measures 143 through 148. It begins with a dynamic marking of *pp*. The tempo changes to *Allegro grazioso* with a metronome marking of ♩ = 168. The music features a series of eighth and sixteenth notes, with a triplet of eighth notes in measure 143. The key signature has one flat, and the time signature is 6/8.

149

Detailed description: This staff contains measures 149 through 154. The music features a series of eighth and sixteenth notes, with a triplet of eighth notes in measure 149. The key signature has one flat, and the time signature is 6/8.

Oboe 1

8

158

mp *f*

Measures 158-162: Treble clef, 3/8 time signature. Measure 158 starts with a rest, followed by eighth notes. Measure 159 is a whole rest. Measure 160 has a 4/4 time signature change, with quarter notes. Measure 161 has a 7/8 time signature change, with eighth notes. Measure 162 has a 4/4 time signature change, with eighth notes. Dynamics: *mp* at the start, *f* at the beginning of measure 160.

163

Measures 163-167: Treble clef, 4/4 time signature. Measure 163 has quarter notes. Measure 164 has quarter notes. Measure 165 has quarter notes. Measure 166 has quarter notes. Measure 167 has quarter notes.

168

ff 10

Measures 168-170: Treble clef, 4/4 time signature. Measure 168 has quarter notes. Measure 169 has a 12/8 time signature change, with a whole note. Measure 170 has a 4/4 time signature change, with a whole note. Dynamics: *ff* at the start. A fermata over measure 170 is labeled '10'.

S. fl.

181

p *f*

Measures 181-185: Treble clef, 4/4 time signature. Measure 181 has a slur over a triplet of eighth notes. Measure 182 has a slur over a triplet of eighth notes. Measure 183 has a slur over a triplet of eighth notes. Measure 184 has a slur over a triplet of eighth notes. Measure 185 has a slur over a triplet of eighth notes. Dynamics: *p* at the start, *f* at the end. A hairpin crescendo is shown below the staff.

186

ff

Measures 186-190: Treble clef, 4/4 time signature. Measure 186 has a slur over a half note. Measure 187 has a slur over a half note. Measure 188 has a slur over a half note. Measure 189 has a slur over a half note. Measure 190 has a slur over a half note. Dynamics: *ff* at the start.

191

Measures 191-193: Treble clef, 4/4 time signature. Measure 191 has a slur over a half note. Measure 192 has a slur over a half note. Measure 193 has a slur over a half note.

194

7 *pp*

Measures 194-198: Treble clef, 9/8 time signature. Measure 194 has a slur over a half note. Measure 195 has a slur over a half note. Measure 196 has a slur over a half note. Measure 197 has a slur over a half note. Measure 198 has a slur over a half note. Dynamics: *pp* at the end. A fermata over measure 197 is labeled '7'.

204

rit. - - - - **Molto ritmico** ♩ + ♩ = 72

f *ff*

Measures 204-208: Treble clef, 4/4 time signature. Measure 204 has a slur over a half note. Measure 205 has a slur over a half note. Measure 206 has a slur over a half note. Measure 207 has a slur over a half note. Measure 208 has a slur over a half note. Dynamics: *f* at the start, *ff* at the end. A hairpin crescendo is shown below the staff.

212

219

234

249

259

266

281

288

Oboe 1

10

303 Allegro grazioso ♩ = 168

The musical score for Oboe 1 consists of ten staves of music, numbered 303 to 358. The piece is in 4/4 time and marked 'Allegro grazioso' with a tempo of 168 beats per minute. The score includes various musical notations such as rests, notes, slurs, and dynamic markings. Measure 303 starts with a 2-measure rest, followed by a 3-measure rest, and then a melodic phrase marked 'mf'. Measure 312 features a complex rhythmic pattern with slurs and a 'mf' dynamic. Measure 317 begins with a 'f' dynamic and includes a slur. Measure 322 is marked 'ff' and contains a series of slurs. Measure 326 continues with slurs and a 'ff' dynamic. Measure 330 features a long slur. Measure 333 includes a 3-measure rest. Measure 339 has a 'f' dynamic, a slur, and a 'fff' dynamic. Measure 344 contains a 3-measure rest and a slur. Measure 352 includes a 3-measure rest and a slur. Measure 358 ends with a 2-measure rest.