

SEBASTIAN ANTON  
SCHERER

(1631 - 1712)

SONATA  
PRIMA

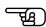
FOR 2 VIOLINS, VIOLA DA GAMBA AND CONTINUO

Typeset using LilyPond by Rémy CLAVERIE ( remy.claverie@orange.fr ) and corrected by Xavier CLAVERIE-ROSPIDE .

This music score has been placed in the public domain by the typesetter under the Creative Commons Licence.

Any comment or error indications are welcome. As well, an email when this score is used (concerts, recordings, etc.) would be appreciated.

The lilypond source file is available on request to the typesetter.

This score has been transcribed from the digitised facsimile of the Gallica website (Vm7-1473). 



# SONATA PRIMA

SEBASTIAN ANTON SCHERER

## Adagio

Musical score for the Adagio section, measures 1-4. The score is for Violin I, Violin II, Viola da Gamba or Bassoon, and Continuo. The key signature is one flat (B-flat) and the time signature is common time (C). The Continuo part includes figured bass notation: 65,  $\frac{4}{2}$ , 6,  $\frac{6}{4}$ , 6, 76, 6.

## Allegro

Musical score for the Allegro section, measures 5-8. The score is for Violin I (V.I.), Violin II (V.II), Viola da Gamba or Bassoon (VDG BSN), and Continuo (CONT.). The Continuo part includes figured bass notation: 7, 43, 6.

Musical score for the Allegro section, measures 9-11. The score is for Violin I (V.I.), Violin II (V.II), Viola da Gamba or Bassoon (VDG BSN), and Continuo (CONT.). The Continuo part includes figured bass notation: 6, 6, 6.

Musical score for the Allegro section, measures 12-14. The score is for Violin I (V.I.), Violin II (V.II), Viola da Gamba or Bassoon (VDG BSN), and Continuo (CONT.). The Continuo part includes figured bass notation: 6, 7,  $\frac{6}{5}$ , #, 6.

Musical score for the Allegro section, measures 15-17. The score is for Violin I (V.I.), Violin II (V.II), Viola da Gamba or Bassoon (VDG BSN), and Continuo (CONT.). The Continuo part includes figured bass notation: 6,  $\frac{765}{343}$ , 6.

18

V. I

V. II

VDG  
BSN

CONT.

21

V. I

V. II

VDG  
BSN

CONT.

24

V. I

V. II

VDG  
BSN

CONT.

27

V. I

V. II

VDG  
BSN

CONT.

30

V. I

V. II

VDG  
BSN

CONT.

33

V. I

V. II

V.DG  
BSN

CONT.

38

V. I

V. II

V.DG  
BSN

CONT.

42

V. I

V. II

V.DG  
BSN

CONT.

47

V. I

V. II

V.DG  
BSN

CONT.

52

V. I

V. II

V.DG  
BSN

CONT.

57

V. I

V. II

VdG  
BSN

CONT.

61

V. I

V. II

VdG  
BSN

CONT.

66

V. I

V. II

VdG  
BSN

CONT.

70

V. I

V. II

VdG  
BSN

CONT.

74

V. I

V. II

VdG  
BSN

CONT.

**79**

V. I

V. II

VDG  
BSN

CONT.

**84**

V. I

V. II

VDG  
BSN

CONT.

**91**

V. I

V. II

VDG  
BSN

CONT.

**95**

V. I

V. II

VDG  
BSN

CONT.

**98**

V. I

V. II

VDG  
BSN

CONT.

**101**

V. I

V. II

VDG  
BSN

CONT.

**104**

V. I

V. II

VDG  
BSN

CONT.

**107**

V. I

V. II

VDG  
BSN

CONT.

**Adagio**

**111**

V. I

V. II

VDG  
BSN

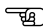
CONT.

Typeset using LilyPond by Rémy CLAVERIE (remy.claverie@orange.fr) and corrected by Xavier CLAVERIE-ROSPIDE .

This music score has been placed in the public domain by the typesetter under the Creative Commons Licence.

Any comment or error indications are welcome. As well, an email when this score is used (concerts, recordings, etc.) would be appreciated.

The lilypond source file is available on request to the typesetter.

This score has been transcribed from the digitised facsimile of the Gallica website (Vm7-1473). 





*Next pages should be printed on one side only*

# SONATA PRIMA

VIOLIN I

SEBASTIAN ANTON SCHERER

**Adagio**



**7 Allegro**



**11**



**15**



**19**



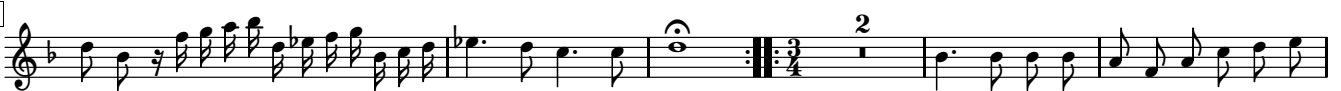
**23**



**26**



**31**



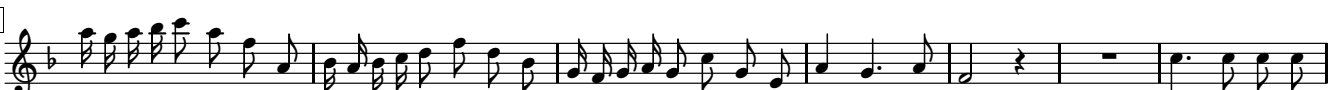
**38**



**43**



**50**



57 

62 

69 

75 

82 

89 

95 

98 

102 

106 

Adagio

111 

# SONATA PRIMA

VIOLIN II

SEBASTIAN ANTON SCHERER

**Adagio**



**Allegro**



59 

64 

69 

74 

79 

86 

93 

98 

102 

105 

109 **Adagio** 

# SONATA PRIMA

VIOLA DA GAMBA / BASSOON

SEBASTIAN ANTON SCHERER

**Adagio**



**Allegro**



58



Musical notation for measure 58, featuring a bass clef, a key signature of one flat, and a 3/8 time signature. The notation includes a series of eighth and sixteenth notes with various accidentals.

64



Musical notation for measure 64, featuring a bass clef, a key signature of one flat, and a 3/8 time signature. The notation includes a series of eighth and sixteenth notes with various accidentals.

70



Musical notation for measure 70, featuring a bass clef, a key signature of one flat, and a 3/8 time signature. The notation includes a series of eighth and sixteenth notes with various accidentals.

76



Musical notation for measure 76, featuring a bass clef, a key signature of one flat, and a 3/8 time signature. The notation includes a series of eighth and sixteenth notes with various accidentals.

82



Musical notation for measure 82, featuring a bass clef, a key signature of one flat, and a 3/8 time signature. The notation includes a series of eighth and sixteenth notes with various accidentals.

90



Musical notation for measure 90, featuring a bass clef, a key signature of one flat, and a 3/8 time signature. The notation includes a series of eighth and sixteenth notes with various accidentals.

95



Musical notation for measure 95, featuring a bass clef, a key signature of one flat, and a 3/8 time signature. The notation includes a series of eighth and sixteenth notes with various accidentals.

100



Musical notation for measure 100, featuring a bass clef, a key signature of one flat, and a 3/8 time signature. The notation includes a series of eighth and sixteenth notes with various accidentals.

104



Musical notation for measure 104, featuring a bass clef, a key signature of one flat, and a 3/8 time signature. The notation includes a series of eighth and sixteenth notes with various accidentals.

107

Adagio



Musical notation for measure 107, featuring a bass clef, a key signature of one flat, and a 3/8 time signature. The notation includes a series of eighth and sixteenth notes with various accidentals.

111



Musical notation for measure 111, featuring a bass clef, a key signature of one flat, and a 3/8 time signature. The notation includes a series of eighth and sixteenth notes with various accidentals.

# SONATA PRIMA

CONTINUO

SEBASTIAN ANTON SCHERER

Adagio

Allegro

65  $\frac{4}{2}$  6  $\frac{6}{4}$  6 76 6 7 43

8 6 6 6 6 6 7  $\frac{6}{5}$  # 6

14 6 765 343 6 6 6

20 4# 6 6 4# # 56 5

26 6 6 7 b 4 3 43

32 5 43 6

39 6 6  $\frac{4}{2}$  6 43 6

47 6 6 6 4 3



55 6 # 6 56 # 6 # 6 # 4#

63 # 6 # 6 4 # #

74 6 # 56 b 6 6 4 3 b 6

82 6 6 6 6 4 3 65 4b 3

93 6 65 43 7 6

98 6 6 6

103 7 6 6 7 4# 7 6 5 7 6 # 7 6

**Adagio**

109 4b 98 98 6 9 6 4# 76 6 6 76 98 7 43