

TYD EN KONST-OEFFENINGEN

SONATA V

Joan Schenk

Preludium

Adagio

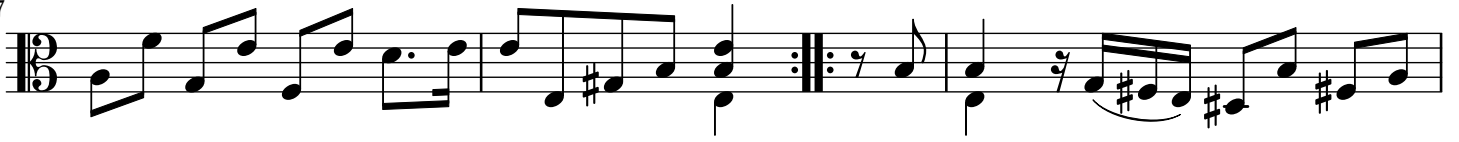
Musical score for the Preludium of Sonata V, measures 1-22. The score is written in bass clef with a common time signature (C). The tempo is marked Adagio. The key signature has one sharp (F#). The score consists of a single melodic line with various rhythmic patterns, including eighth and sixteenth notes, and rests. Measure numbers 4, 7, 9, 11, 13, 16, 19, and 22 are indicated at the beginning of their respective staves. The piece concludes with a double bar line and repeat signs.

Allemande

Musical score for the Allemande of Sonata V, measures 1-4. The score is written in bass clef with a common time signature (C). The tempo is not explicitly marked but is implied to be faster than the Preludium. The key signature has one sharp (F#). The score consists of a single melodic line with eighth and sixteenth notes. Measure numbers 4 is indicated at the beginning of the staff.

2

7



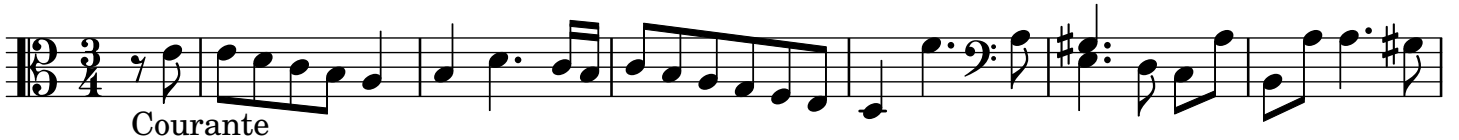
10



14

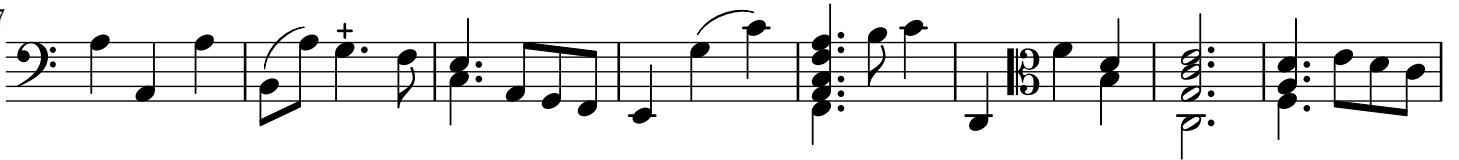


18

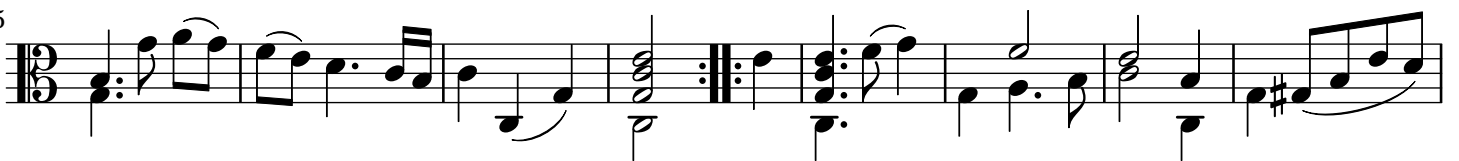


Courante

7



15



23



30



Sarabande

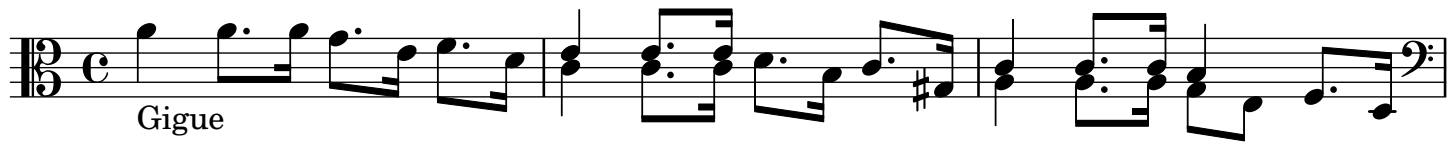
8



16



Gigue



4



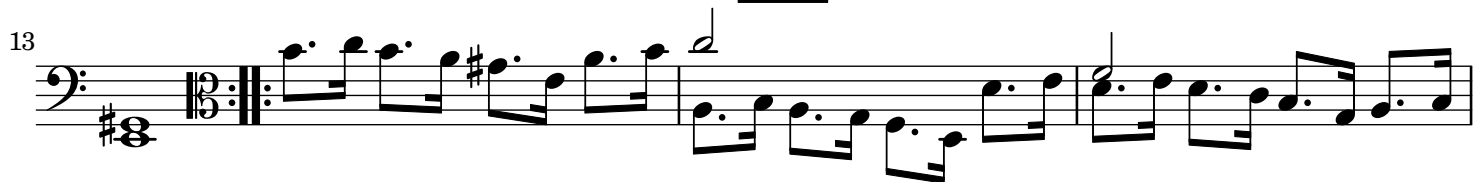
7



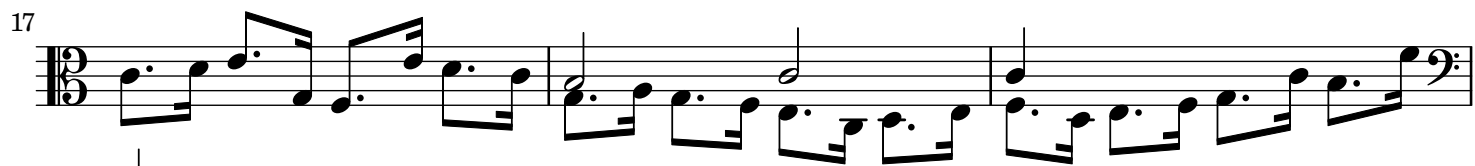
10



13



17



20



23



26

