

1
Ouverture

2^{me} Symphonie
Albéric Magnard

2 Fl.

2 H^h.

2 Clarin.
C^{on}

2 Basson

4 Cors
en Mi

2 Tromp.

1^{re}
3 Trombones
2-1-3

Timbals
ci mi

Allegro } *Assez animé*

$\text{♩} = 92$

1^{re} Viol.

2^e Viol.

Alto

Vidoue.

Contreb.

C^{on}

3

Fl. *mf*

Hr. *mf*

Clarin. *mf*

Banons *mf*

Cons. *mf*

1st Viol. *mf*

2nd Viol. *mf*

Alto *mf*

Violon. *mf*

Contra. *mf*

1

Fl. *mf*

Hr. *mf*

Clarin. *mf*

Bassoon *mf*

Corn *mf*

Tromp. *mf*

f

B

H

1st Viol. *f*

2nd Viol. *pizz.* *arco* *f*

Alto *f*

Violon. *f*

Contab. *f*

Corn

3

Fl. *mf* *f* *mf*

Hr. *f* *mf*

Clarinet *f* *mf*

Bassoon *f* *mf*

Corn *mf* *f*

Tromp. *mf*

3 4 3 4

1st Viol. *mf* *f* *mf*

2nd Viol. *mf* *f* *mf*

Alto *mf* *f* *mf*

Violon. *pizz.* *arco* *mf* *chord*

Contab. *pizz.* *arco* *mf*

Fl.

Hr.

Clarin.

Basson

Corn

1st Viol.

2nd Viol.

Alto

Viola

Contra.

Fl.
Hh.
Clarin.
Basson
Cor

Handwritten musical score for woodwinds and strings. The top section includes staves for Flute, Horn, Clarinet, Bassoon, and Cor. The music features various notes, rests, and dynamic markings such as p, mf, and f. There are also some handwritten annotations and a large bracketed section for the Cor.

Presser un peu

Mour

= 108 = 92
3 4

1. Viol.
2. Viol.
Alto
Violon.
Contreb.

Handwritten musical score for strings. The bottom section includes staves for Violin 1, Violin 2, Alto, Violoncello, and Contrebasse. The music features various notes, rests, and dynamic markings such as mf and f. There are also some handwritten annotations and a large bracketed section for the Contrebasse.

3

7 9

Fl. *pp*

Hr. *pp*

Clarinet *mf*

Bassoon *mf*

Corn *mf*

Trumpet *p*

Larghetto

mf

4 3 4 3 4 3

1st Viol. *pp*

2nd Viol. *pp*

Alto *pp*

Viola *pp*

Cello *pp*

pizz

pizz

pizz

pizz

pizz

II

Fl.
 Hh.
 Clarin.
 Basson.
 Cors.

1st Viol.
 2nd Viol.
 Alto.
 Violon.
 Contab.

A
P

Fl. *ga*

Hr.

Clarin.

Basson

Cors

1st V.

2nd V.

Alto

Violon.

Contreb.

Fl.

Hr.

Clarin.

Basson

Cors

Tromp.

1^{re} Trombon

2^e 3

1^{re} Viol.

2^e Viol.

Alto

Violon.

Contreb.

This is a handwritten musical score for a symphony orchestra. The score is written on ten staves, each labeled with an instrument or section. The instruments listed are Flute (Fl.), Horn (Hr.), Clarinet (Clarin.), Bassoon (Basson), Horns (Corns), Trumpets (Tromp.), Trombones (1^{re} Trombon, 2^e 3), Violins (1^{re} Viol., 2^e Viol.), Viola (Alto), Violoncello (Violon.), and Double Bass (Contreb.). The score includes various musical notations such as notes, rests, beams, and slurs. There are several dynamic markings, including *mf* (mezzo-forte) and *p* (piano). A large section of the score is crossed out with a diagonal line. At the top right, there are handwritten numbers '10' and '12'. On the right side, there are handwritten notes 'Clar =', 'Violon =', and a large 'V' symbol.

~~Clar~~

Clar =

Violon =

Violon

V

6

Fl. *1st*

Hr.

Clarin.

Basson

Corn

Tromp

f *ff*

f

p

1st Viol.

2nd Viol.

Alto

Viola

Contub.

Fl.

Hr.

Clarin

Basson

Cors

Tromp.

f *fp*

1st Viol.

2nd Viol.

Alto

Violone

Contra

7

Fl.

Hll.

Clarin.

Basson

Cors

Tromps.

1^{re} Viol.

2^e Viol.

Altos

Violon.

Contreb.

Cors

ff

Fl.

Hr.

Clarinet

Bassoon

Corn

1st Viol.

2nd Viol.

Alto

Violone

Contra

Fl.

Hr.

Clarinet

Bassoon

Corn

Trumpet

1st Trombone

2nd Trombone

This section contains the handwritten musical notation for the woodwind and brass sections. It includes staves for Flute, Horn, Clarinet, Bassoon, Corn, Trumpet, 1st Trombone, and 2nd Trombone. The notation features various notes, rests, and dynamic markings such as 'f' and 'mf'.

This section contains the handwritten musical notation for the string section. It includes staves for Violin I, Violin II, Viola, Violoncello, and Contrabasso. The notation includes notes, rests, and dynamic markings such as 'p' and 'pp'.

f

ff

3

1st Viol.

2nd Viol.

Alto

Violon.

Contrab.

This section contains the handwritten musical notation for the string instruments. It includes staves for 1st Violin, 2nd Violin, Alto, Violoncello, and Contrabasso. The notation features complex rhythmic patterns, triplets, and dynamic markings such as 'f'.

This section contains the handwritten musical notation for the string instruments, continuing from the previous section. It includes staves for 1st Violin, 2nd Violin, Alto, Violoncello, and Contrabasso. The notation includes notes, rests, and dynamic markings such as 'p', 'pp', and 'sonor. dominant'.

Fl.

Hr.

Clarin.

Basson

Cor.

mf

p

1^{re} Violoncello

2^e p

ff

1^{re} Viol.

2^e Viol.

Alto

Violoncel.

Contrab.

ff

Fl. *mf* *al*

Hr. *pp* *esolo*

Clarin. *mf* *pp*

Baron

Cors

1st Viol. *pp*

2nd Viol. *pp*

Alto *pp*

Violon. *mp* *andante*

Contab. *pp*

pp

pp *chanson*

Fl. *2^o* *p*

Hrb.

Clarin. ^{1^{re}} *p* *mf*

Bassons *p* *mf*

Corn

Tromp.

A - ni - mez un peu
Allegretto

1^{re} Viol.

2^e Viol.

alto

Violon.

Contreb.

Cors

11

Fl. *p* *trist*

Hob. *p* *trist*

Clarinet *p* *trist*

Bassoon *p* *trist*

Corn *p* *trist*

1st V. *p* *trist*

2nd V. *p* *trist*

Alto *p* *trist*

Violon. *p* *trist*

Contab. *p* *trist*

VC

1. V.

2. V.

3. V.

4. V.

5. V.

6. V.

7. V.

8. V.

9. V.

10. V.

11. V.

12. V.

13. V.

14. V.

15. V.

16. V.

17. V.

18. V.

19. V.

20. V.

21. V.

22. V.

23. V.

24. V.

25. V.

26. V.

27. V.

28. V.

29. V.

30. V.

31. V.

32. V.

33. V.

34. V.

35. V.

36. V.

37. V.

38. V.

39. V.

40. V.

41. V.

42. V.

43. V.

44. V.

45. V.

46. V.

47. V.

48. V.

49. V.

50. V.

51. V.

52. V.

53. V.

54. V.

55. V.

56. V.

57. V.

58. V.

59. V.

60. V.

61. V.

62. V.

63. V.

64. V.

65. V.

66. V.

67. V.

68. V.

69. V.

70. V.

71. V.

72. V.

73. V.

74. V.

75. V.

76. V.

77. V.

78. V.

79. V.

80. V.

81. V.

82. V.

83. V.

84. V.

85. V.

86. V.

87. V.

88. V.

89. V.

90. V.

91. V.

92. V.

93. V.

94. V.

95. V.

96. V.

97. V.

98. V.

99. V.

100. V.

Fl.
 M.
 Clar.
 Basson
 Cors

1^{re} Viol.
 2^e Viol.
 alto
 Violon.
 Contreb.

Handwritten musical score for orchestra and strings. The score is divided into three systems. The first system includes parts for Flute (Fl.), Horns (Hr.), Clarinet (Clarin.), Bassoon (Basson), Cor (Cor), Trombone (Tromp.), 1st Trumpet (1^{re} Tromp.), 2nd Trumpet (2^e Tromp.), and Timpani (Cymbals). The second system includes parts for Violin I (1^{re} V.), Violin II (2^e V.), Viola (Alt.), Violoncello (Violone), and Contrabass (Contreb.). The score features various musical notations including notes, rests, and dynamic markings such as *mf*, *p*, *ff*, and *1^{er} p*. Performance instructions include *Largement en récitatif*, *Récitatif*, *Largement*, and *Retenez*. Tempo markings are indicated as *♩ = 60* and *♩ = 63*. The score is written in a major key with a common time signature.

Flügel

Hautbois

Clarin.
en la

Oboen

Corn
en fa

Trump
en mi

Trumb

Timb

Handwritten musical score for the first system. The Flügel part features a melodic line with notes and accidentals, including a trill-like figure. Dynamic markings include *ritard* and *ritardando*. The Hautbois part has a similar melodic line with *ritardif* and *allegro* markings. The Clarin. en la, Oboen, Corn en fa, Trump en mi, Trumb, and Timb parts are mostly blank, with some initial key signatures and clefs.

Mesure

Adagio

Allegro

Viol.

Viola

Cello

Cont.

B.c.

Handwritten musical score for the second system. The Viol. and Viola parts have melodic lines with notes and accidentals, including a trill-like figure. Dynamic markings include *p* and *f*. The Cello, Cont., and B.c. parts are mostly blank, with some initial key signatures and clefs.

V.S.

Fl. *f*

Hr. *mf*

Clarin. *mf*

Saxofon *mf*

Corn. *mf*

B A

A A

1. Viol. *mf*

2. Viol. *mf*

Alto *mf*

Violon. *mf*

Cornet. *mf*

Fl. *mf* *me ga*

Hr. *f*

Clarinet *mf*

Bassoon *f*

Con. *mf*

3/4

4/4

3/4

4/4

3

4

3/4

3/4

3

1st V. *pizz* *arco*

2nd V. *pizz* *arco*

Alto *f*

Violon. *f*

Contab. *f* *ff* *rigorous* *mf*

Fl.
Hh.
Clarin.
Basson
Cors
Tromp.

Handwritten musical score for woodwinds and brass instruments. The staves are labeled: Fl. (Flute), Hh. (Horn), Clarin. (Clarinet), Basson (Bassoon), Cors (Trumpet), and Tromp. (Trombone). The music is written in a key signature of three sharps (F#, C#, G#) and a 2/4 time signature. The score includes various musical notations such as notes, rests, and dynamic markings like *f* and *mf*. There are also some performance instructions like *1^{re} ga* and *2^e ga* written above the notes.

3/4

4/4

3/4

4/4

3

4

3

4

1^{re} V.
2^e V.
Alto
Violon.
Contreb.

Handwritten musical score for string instruments. The staves are labeled: 1^{re} V. (First Violin), 2^e V. (Second Violin), Alto (Viola), Violon. (Violoncello), and Contreb. (Contrebasse). The music is written in a key signature of three sharps (F#, C#, G#) and a 2/4 time signature. The score includes various musical notations such as notes, rests, and dynamic markings like *f*, *mf*, and *sw. f*. There are also performance instructions like *bizze* and *arco* written above the notes.

Fl. *8va*

Hr. *1-2*

Clarinet

Bassoon *mf*

Corn *p*

Tromp.

p

a - anim

mf

2nd V. *mf*

Alto *mf*

Violon. *mf*

Contab. *mf*

17

Fl. *f*

Hr. *mf*

Clarin.

Basson

Corn. *mf*

Trump.

Trum. 1. *pp*

Trum. 2. *pp*

f *pp*

(dim) = 92

mi - mez *Moz*

3 4 3 4 3

1. Viol.

2. Viol.

Alto

Violon.

Contab.

Fl. *mf*

Hr. *mf*

Clarin. *mf*

Saxoph. *f > p*

Corn. *mf*

Sp

1st V. *mf*

2nd V. *mf*

Alto. *mf*

Violon. *mf*

Contab. *mf*

19

Fl.

Hr.

Clar.

Bassoon

Cor

1. V.

2. V.

All.

Violon.

Contab.

Fl. *mf*

Hr. *mf*

Clarin. *mf*

Basson *mf*

Cors *f*

fp

1st V. *bizz.* *arco* *f*

2nd V. *bizz.* *arco* *f*

Alto *bizz.* *arco* *f*

Violon. *mf*

Contreb. *mf*

aug. *men. teg.*

mf *f* *p* *p* *p* *p* *mp*

20

38

40

Fl.

Hrb.

Clarin.

Basson

Corn

Trmb.

1st Viol.

2nd Viol.

Alto

Violon.

Contreb.

This is a handwritten musical score for a symphony orchestra. The score is written on ten staves, each labeled with an instrument. The instruments are: Flute (Fl.), Horns (Hrb.), Clarinet (Clarin.), Bassoon (Basson), Corn (Corn), Trumpets (Trmb.), Violins (1st Viol. and 2nd Viol.), Viola (Alto), Violoncello (Violon.), and Cello/Double Bass (Contreb.). The score includes various musical notations such as notes, rests, slurs, and dynamic markings (mf, f). There are also some handwritten annotations and a large diagonal slash on the Trumpets staff. The page is numbered 40 in the top right corner, with circled numbers 20 and 38 indicating specific measures.

Fl. *ga*

Hr. *ga*

Clarin.

Saxons

Corn

1st V.

2nd V.

Alt.

Violon.

Contreb.

22

Fl.

Hr.

Clarinet

Bassoon

Cor

Vinobas

ff

En animant.

Andando

1st Vi.

2nd Vi.

Alt.

Violon.

Contab.

ff *tr. rythm.*

ff *tr. contrabasso tr. unani*

ff *tr. contrabasso tr. unani*

ff *tr. contrabasso tr. unani*

ff *tr. contrabasso tr. unani*

Fl.

Hr.

Clarin.

Basson

Corn

Tromp.

(Accelerando)

1st V.

2nd V.

Alto

Violon.

Contab.

23

43

45

Fl. *8a* *7* *12* *8a*

Hr. *ff*

Clarinet

Bassoon *12* *ff* *12*

Corn

Trumpet *mf*

(Crescendo)

Allegro
♩ = 108

1st V.

2nd V.

Alto

Violon.

Contab.

Fl.

Hr.

Clarin.

Basson

Cori

Tromp

Handwritten musical score for woodwinds and brass. The score consists of six staves. The top staff is for Flute (Fl.), followed by Horn (Hr.), Clarinet (Clarin.), Bassoon (Basson), and a pair of Horns (Cori). The bottom staff is for Trumpet (Tromp). The music is written in a key signature of two sharps (F# and C#) and a 4/4 time signature. The notation includes various note values, rests, and dynamic markings. The first staff has a large slur over the first two measures. The second staff has a large slur over the first four measures. The third staff has a large slur over the first four measures. The fourth staff has a large slur over the first four measures. The fifth staff has a large slur over the first four measures. The sixth staff has a large slur over the first four measures.

1st V.

2nd V.

Alto

Violon.

Contab.

Handwritten musical score for strings. The score consists of five staves. The top staff is for the first Violin (1st V.), followed by the second Violin (2nd V.), Alto, Violoncello (Violon.), and Contrabass (Contab.). The music is written in a key signature of two sharps (F# and C#) and a 4/4 time signature. The notation includes various note values, rests, and dynamic markings. The first staff has a large slur over the first four measures. The second staff has a large slur over the first four measures. The third staff has a large slur over the first four measures. The fourth staff has a large slur over the first four measures. The fifth staff has a large slur over the first four measures.

Fl. *toute la fois*

Hr. *toute la fois*

Clarin. *toute la fois*

Basson *toute la fois*

Cors

Tromp.

Tromb. 1^{re}

Tromb. 2^{es}

Timbales

à large

$d = 72$

1^{re} Viol.

2^e Viol.

Alto

Violon.

Contreb.

toute la fois

toute la fois

toute la fois

toute la fois

toute la fois

Flute

Hr.

Clarin.

Bassoon

Corn

Trump.

1 Tromb.

2 Tromb.

Timbals

1st Viol.

2nd Viol.

Alto

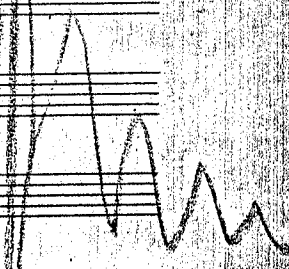
Violon.

Contra.

Handwritten musical score for woodwinds and percussion. The score includes parts for Flute, Hr., Clarinet, Bassoon, Corn, Trumpet, Trombone (1st and 2nd), and Timbals. The notation is dense with notes, rests, and dynamic markings such as *f* and *ff*. The woodwinds and brass parts feature complex rhythmic patterns and melodic lines, while the timbals part consists of rhythmic patterns with *tr* markings.

A series of empty musical staves, likely reserved for string parts or other instruments. The staves are blank, with only some faint pencil lines visible.

Handwritten musical score for strings and basso continuo. The score includes parts for 1st Violin, 2nd Violin, Alto, Violoncello, and Basso Continuo. The notation is dense with notes, rests, and dynamic markings such as *f* and *ff*. The string parts feature complex rhythmic patterns and melodic lines, while the basso continuo part consists of rhythmic patterns with *tr* markings.



Vif $\text{♩} = 80$

2
Dances

Flute

Hautbois

Clarin.
en la

Basson

Cors

Tromps.

Timbals

Harpe

$\frac{1}{P}$

Vif $\text{♩} = 80$

1^{re} Viol.

2^e Viol.

alto

Violoncelle

Contreb.

$\frac{P}{I P}$

arco

$\frac{p}{f}$

Fl.

Hr.

Clarinet 1st

Bassoon

Corn

Trumpet

Timpani

ob

fac

Con

I

1st Viol.

2nd Viol.

Alto

Viola

Contrab.

Fl.

Hr.

Clarinet

Bassoon

Corn

Trumpet

Tuba

Drum

Cymbal

Peter

Re - he - nez

1st Viol.

2nd Viol.

Viola

Cello

f

Flute
 H.C.
 Clarinet
 Bassoon
 Coro
 Trompe
 Timb.

f

25

1st Viol.
 2nd Viol.
 Alts.
 Violone
 Contrab.

Fl.

Hr.

Clarinet

Bassoon

Corn

Trumpet

Tuba

1st Viol.

2nd Viol.

Alto

Violone

Contra

Handwritten musical score for page 59, measures 1-8. The score includes parts for Flute, Horn, Clarinet, Bassoon, Corn, Trumpet, Tuba, 1st Violin, 2nd Violin, Alto, Violone, and Contra. The woodwinds and strings play a rhythmic pattern of eighth notes, while the strings also play a pizzicato arpeggiated accompaniment. Dynamics range from fortissimo (ff) to piano (p).

Fl. *fl*

Hr. *fl*

Clain.

Basson

Cors

Troup.

Timb.

26

1^{re} Viol. *arco*

2^e Viol.

alto

Violon.

Contub.

Fl.

Hob.

Clarin.

Basson

Corn

Trump.

Timb.

1st Viol.

2nd Viol.

Alto

Violon.

Contreb.

P

Fl.

Hr.

Clarinet

Bassoon

Corn

Trumpet

Tympani

♩ = 80



1st Viol.

2nd Viol.

Alto

Violoncello

Contrabasso

Flute. *f*

Hr. *mf*

Clarinet. *fp*

Bassoon. *mf*

Corn. *fp* *mf* *p*

Trumpet. *mf* *p*

Tympani. *p*

1st V. *le meno dir.*

2nd V. *mf* *f* *mf* *f* *mf* *f* *mf* *f* *mf* *f*

Alto. *mf* *mf* *mf* *mf* *mf* *mf* *mf* *mf*

Violon. *mf* *mf*

Contrab. *mf*

Fl. *mf p*

Hr. *mf p*

Clar. *mf p*

Basson

Cora *mf p*

Tromp.

Bimbals

1st V. *mf*

2nd V. *f mf*

Alto *mf*

Violon *mf*

Cont. *mf*

Fl. *p* *mf*

Hr. *p* *mf*

Clarin. *p* *mf*

Basson *p* *mf*

Cors *mf*

Trump. *mf*

Timbales *mf*

d'ou d. = d

$\frac{1}{p} = 80$

1st V. *f* *mf*

2nd V. *f* *mf* *mf p ligur*

Alt. *mf* *mf* *mf* *mf pp*

Violon. *mf* *mf* *mf* *mf p* *arco* *mf p*

Contub. *mf* *mf* *mf* *mf p*

Fl.
Hh.
Clarin.
Basson
Cors
Tromp.
Tymbals

Musical score for woodwinds and percussion. The Flute (Fl.) part has a melodic line with a slur. The Horns (Hh.) part has a few notes. The Clarinet (Clarin.) and Bassoon (Basson) parts have more complex melodic lines with slurs. The Trombones (Cors) and Tromps (Tromp.) parts are mostly empty. The Tymbals (Tymbals) part is also empty.

cl
Cors

1^{re} V.
2^e V.
Alto
Violon.
Contab.

Musical score for strings and double bass. The 1^{re} Violin (1^{re} V.) part has a melodic line with a slur and a dynamic marking of *p*. The 2^e Violin (2^e V.) part has a rhythmic accompaniment. The Alto part has a rhythmic accompaniment. The Violon (Violon.) part has a rhythmic accompaniment. The Contab. (Contab.) part has a rhythmic accompaniment. There are dynamic markings of *pp* and *p* throughout.

~~1. V.~~

mp

arco

arco

Fl. *mf*

Hrh. *mf*

Clarinet *mf p*

Bassoon *mf p*

Corn *mf p*

Trumpet *mf p*

Trombone *mf p*

1st V. *mf p*

2nd V. *mf p*

Alto *mf p*

Violin *arco* *mf p*

Violoncello *arco* *mf p*

Fl. *mf*

Hrb. *mf*

Clarin. *mf*

Basson

Corn *mf*

Trump. *p*

Timb.

1st V.

2^d V.

Alto

Violon.

Contb.

Fl.

Hr.

Clarin.

Basson

Corn

Tymp.

Cimb.

1. V.

2. V.

Alto

Violon

Cont.

Fl. *f* *mf*

Hh. *f* *mf*

Clarin. *f* *mf*

Basson *f* *mf*

Corn *f* *mf*

Trump. *f* *mf*

Timp. *f* *mf*

Vimb. *f* *mf*

1st Viol. *f* *mf*

2nd Viol. *f* *mf*

Alto *f* *mf*

Violon. *f* *mf*

Contab. *f* *mf*

Fl.
Hr.
Clarin.
Basson
Corns
Trump.
Tymb.

A series of seven empty musical staves for woodwinds and brass instruments: Flute (Fl.), Horn (Hr.), Clarinet (Clarin.), Bassoon (Basson), Corns (Corns), Trumpet (Trump.), and Tympani (Tymb.).

pp
f

(♩ = 80 al - ♩ = 76)

postiss. cedendo

A musical staff featuring a large crescendo hairpin starting from the left. The word "son" is written below the staff.

son re - te - ment cum per

1st V.
2nd V.
Alto
Violon.
Cemb.

A series of five musical staves for strings and keyboard instruments: 1st Violin (1st V.), 2nd Violin (2nd V.), Alto, Violoncello (Violon.), and Cembalo (Cemb.).

♩

♩
♩
♩
♩
♩

Fl. *pp*

Hob.

Clarinet *pp*

Bassoon *pp*

Corn *p* *in detour*

Trumpet

Harpe *f*

Violoncelle

$\text{♩} = 76$

♩ *Tranquille*

1^{re} V.

2^e V.

alto

Violon

Contb.

Fl.

Hh.

Clarinet

Bassoon

Cor

Trump.

Harp

Timb.

1st V.

2nd V.

Alt.

Violon.

Contb.

Fl. *longues pp*

Hh. *ppp*

Clarin.

Basson *fog* *1^{re}* *p en dehors*

Corn. *pp*

Trump.

Harpe *f*

Timb.

1^{re} V.

2^e V.

Alto

Violon. *1^{re} Violoncelle solo* *Solo* *p en dehors*

Violoncel.

Fl. *tr*

Hr. *pp* *p* *mf/p*

Clarin. *mf/p*

Basson *f/p*

Corn. *p* *mf* *mf/p*

Trump. *f*

Harpe *f*

Cimb. *f*

55

1^{re} V. *V.* *p*

2^e V. *div.* *p*

Alto *mf* *mf*

Violon. *mf* *mf* *mf* *mf*

Contreb. *p* *mf*

FAK

V.

mf *mf* *mf* *mf*

mf *mf*

mf *mf*

Fl. *tr*

Hr.

Clarinet

Bassoon

Corn

Tromp.

Harpe

Viol.

1^{re} V.

2^e V.

Alt.

Violon.

Contreb.

mf

chautant

pp

mf en notes

p

Fl.
Hh.
Clarinet
Bassoon
Cors
Trump.
Timp.

Musical score for woodwinds and percussion. Includes staves for Flute, Horns, Clarinet, Bassoon, Cors, Trumpets, and Timpani. The score shows a transition from a key signature of two sharps (F# and C#) to two flats (Bb and Eb) at the end of the page. Dynamics include *f* and *mf*.

f
pp
f
1/2 = 80
1^{er} Mouvement

1^{er} V.
2nd V.
Alto
Violon.
Conte.

Musical score for strings and voice. Includes staves for Violin I, Violin II, Viola, Violoncello, and Contrabasso. The score continues the key signature change from two sharps to two flats. Dynamics include *pp*, *f*, and *mf*.

Fl. *f*

Hrb. *f*

Clarinet. *f*

Bassoon *f*

Corn *f*

Trump. *f*

Timb. *f* *mf*

~~pp~~
sub

1st V. *f*

2nd V. *f*

Alt. *f*

Violon. *f*

Contab. *f*

Fl.
Hr.
Clarin.
Basson

Corn.
Trump.
Timp.

f sub

1st V.
2nd V.
alt.
Violon.
Cembel.

f

f

Fl.
Hh.
Clarin.
Basson.
Cors.
Tromp.
Timp.

Retour

35

Re - te - ny

pp

1^{re} Viol.
2^e Viol.
alt.
Violon.
Cont.

H

Fl.

Hr.

Clarinet

Bassoon

Corn

Trumpet

Tomb.

Sp

1st V.

2nd V.

Alt.

Violon.

Contreb.

8^a

Fl.

Hh.

Clarin.

Basson

Cors

Trump.

Timb.

F

36

1^{us} V.

2^a V.

alt.

Violone

Contreb.

Fl. *8va*

Hr.

Clarinet

Bassoon

Corn

Trumpet

Wind

1st Viol.

2nd Viol.

Alt.

Violon.

Cello

fp

Fl.
Hr.
Clarinet
Bassoon
Corns
Trumpets
Toms

fp

fp

(♩ = 80)

1st V.
2nd V.
Alt.
Violins
Cello

fp

fp

fp

Fl. *f* *chante*

Hr. *mf* *p*

Clarin. *mf* *p*

Basson *mf* *p*

Corn. *mf* *p*

Tromp. *pp*

Timb. *pp*

38

1^{re} V. *mf* *f*

2^e V. *mf* *f*

Alt. *mf*

Violon. *mf*

Contreb. *mf*

Fl. *mf p*

Hh. *mf p*

Clarin. *mf p*

Basson *p*

Corn *mf*

Trump. *mf*

Viol. *p*

1st V. *f*

2nd V. *f*

Alc. *mf*

Violon. *f*

Cemb. *f*

p.

Fl. *mf*

Hr. *mf*

Clarin. *mf*

Basson *mf*

Corn *mf*

Tromp. *p*

mf

39

mf

1st V. *mf*

2nd V. *mf*

Alt. *mf*

Violon. *mf*

Con. *mf*

Fl.

Hr.

Clarin.

Basson

Cors

Tromp.

Timb.

A

3

(3)

1st V.

2^d V.

Alto

Violon.

Contreb.

9

Fl.

Hr.

Clarinet

Bassoon

Corn

Trumpet

Drum

3 ♩ = 160

9
3

1st Viol.

2nd Viol.

Alt.

Viola

Contab.

Fl.

Hr.

Clarinet

Bassoon

Corn

Trumpet

Tomb.

8

8

8

8

1st V.

2nd V.

alt.

Violon.

Violon.

Fl.

Hr.

Clarin.

Basson

Cors

Trump.

Viol.

41

mf

1st V.

2nd V.

Alt.

Violon.

Contab.

Fl.

Hr.

Clarin.

Basson

Cors

Tromp.

Bimb.



1^{re} Viol.

2^e Viol.

Altus

Violon.

Contreb.

Fl. ^{8^a}

Musical staff for Flute (Fl.) with a circled '8^a' above the first measure. The staff contains a melodic line with various note values and rests.

Hr.

Musical staff for Horn (Hr.) with a melodic line consisting of quarter and eighth notes.

Clarinet

Musical staff for Clarinet with a melodic line featuring many beamed eighth notes.

Bassoon

Musical staff for Bassoon with a melodic line of quarter notes.

Corn

Musical staff for Corn with a melodic line of quarter notes. Dynamic markings 'p' are present in the later measures.

Trumpet

Musical staff for Trumpet with a melodic line of quarter notes.

Violin

Musical staff for Violin with a melodic line of quarter notes.

Viola

Musical staff for Viola with a melodic line of quarter notes.

A large section of the page consisting of several empty musical staves, indicating a section where the instruments are silent or the music is not written on this page.

1 2 3

1st Viol.

Musical staff for 1st Violin with a melodic line of eighth notes.

2nd Viol.

Musical staff for 2nd Violin with a melodic line of eighth notes. Dynamic marking 'pizz.' is present.

Vcllo

Musical staff for Violoncello (Vcllo) with a melodic line of eighth notes. Dynamic marking 'pizz.' is present.

Violone

Musical staff for Violone with a melodic line of quarter notes. Dynamic marking 'pizz.' is present.

Contra

Musical staff for Contrabass (Contra) with a melodic line of quarter notes.

Fl. *mf*

Hr. *mf*

Clarin. *mf*

Basson *mf*

Coro *mf*

Trump. *mf*

Viol. *mf*



4

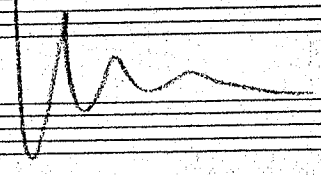
1st Viol. *mf*

2nd Viol. *mf* arco

Alt. *mf* arco

Violon. *mf* arco

Contab. *mf*



Chant varié
Albert Magnard

Vers-mance'

Flûte

Hautbois

Clarin

Basson

Corn

en mi b

Tromp.

1^{re}

2^{de}

3^{de}

Tromb.

1^{re}

2^{de}

ff
/ce

(Andante con moto)

H

Vers-mance' ♩ = 63

Fl.

Fl. *mf* *al*

mf *al*

mf *al*

Hautb.

Hautb.

Clarin.

Clarin. *mf*

mf *al*

Basson

Basson

Cor

Cor

Tromp

Tromp

Tromb.

Tromb.

1st Viol.

1st Viol. *mf*

2^d Viol.

2^d Viol. *mf*

Alto

Alto *mf*

Violone

Violone *mf*

Contub.

Contub. *mf*

II

pizz. *arco*

Flut.
Hrb.
Clarin.
Basson
Coro

Handwritten musical score for the upper woodwind section. The staves are labeled Flut., Hrb., Clarin., Basson, and Coro. The music is written in treble clef with a key signature of one sharp (F#). It features various dynamics such as *mf*, *p*, and *f*, and includes articulation marks like accents and slurs. A *rit.* (ritardando) marking is present in the middle section. The notation includes eighth and sixteenth notes, as well as rests.

Timbale

A series of empty musical staves for the Timpani part. A large, stylized handwritten note is written across the staves, which appears to be the word "Timpani" written in a cursive, calligraphic style.

I
II
Viol.
Alto
Violon.
Contab.

Handwritten musical score for the lower string section. The staves are labeled I, II, Viol., Alto, Violon., and Contab. The music is written in treble clef with a key signature of one sharp (F#). It features various dynamics such as *p*, *mf*, and *aug.* (crescendo). The notation includes eighth and sixteenth notes, as well as rests. A large, stylized handwritten note is written across the staves, which appears to be the word "Violoncello" written in a cursive, calligraphic style.

Flutes *mf* *arg* --- *men* *leg* *az*

Hautb. --- *men* --- *leg*

Clarin. --- *men* *leg* *az*

Basson

Corn

Tromp.

1^u Tromb. *tr*

2^u Tromb.

Timbals

A

f

1^u Viol. --- *men* *leg* *f* *trj-chantant*

2^u Viol. --- *men* *leg* *f*

Alto --- *men* *leg* *f*

Viola --- *men* *leg* *f*

Contab. --- *men* *leg* *f*

A

Flute
Hautb.
Clarin.
Basson
Corno
Tromp.
Tromb.
Tamb.
Viol.
2. Viol.
Alto
Violon.
Contab.

Handwritten musical score for a symphony orchestra, page 93, measure 5. The score includes staves for Flute, Oboe, Clarinet, Bassoon, Horns, Trumpets, Trombones, Timpani, Violins, Viola, Violoncello, and Double Bass. The music is in a key with three sharps (F#, C#, G#) and a common time signature. The score features various musical notations including notes, rests, dynamics (mf, f, p), and performance markings like 'Solo' and 'tr'. There are some large handwritten annotations, including 'tr' and 'mf', and a large bracketed section in the lower staves.

Flute *pp* *arco pp*

Hautbois *pp*

Clar. *pp* *arco*

Bassons *pp*

Corn *pp* *arco*

2 Cors *pp*

3 Cors *pp*

6/8

III III

Moderé sans lenteur ♩ = 146

1^{re} Viol. *unis* *pp*

2^e Viol. *pp* *pizz.* *arco* *p lig.*

Alto *pizz.* *arco* *p lig.*

Violone *pizz.* *arco* *p lig.*

Contreb. *pizz.*

Flute *p* *1^{er} encounterment la la la la*

Hrb.

Clar.

Basson *à 2* *1^{er} solo*

Cors

1^{er} Viol.

2^e Viol. *pizz:* *arco* *plégé*

Altos *pizz:* *arco*

Violon. *arco* *pizz:* *plégé* *léger*

Contreb. *arco*

Fl.
Hfb.
Clarin.
Basson.
Corno

romantico

1^a V.
2^a V.
Alto.
Violon.
Contab.

mf p

Fl. *mf* *mf* *f*

Hr. *mf* *mf* *f*

Clarin *mf* *mf* *f*

Basson *mf* *mf* *f*

Cor *mf* *mf* *f*

Tromp. *mf* *mf* *f*

Trombon *mf* *mf* *f*

f cresc

mf cresc

1st V. *mf* *mf* *f*

2nd V. *mf* *mf* *f*

Alto *mf* *mf* *f*

Violon. *mf* *mf* *f*

Contreb. *mf* *mf* *f*

(#) (4)

Fl.

Handwritten musical notation for the Flute part, including notes, rests, and dynamic markings like *mf* and *p*.

Hr.

Handwritten musical notation for the Horn part, including notes, rests, and dynamic markings like *mf* and *p*.

Clarin.

Handwritten musical notation for the Clarinet part, including notes, rests, and dynamic markings like *mf* and *p*.

Bassoon

Handwritten musical notation for the Bassoon part, including notes, rests, and dynamic markings like *mf* and *p*.

Cons.

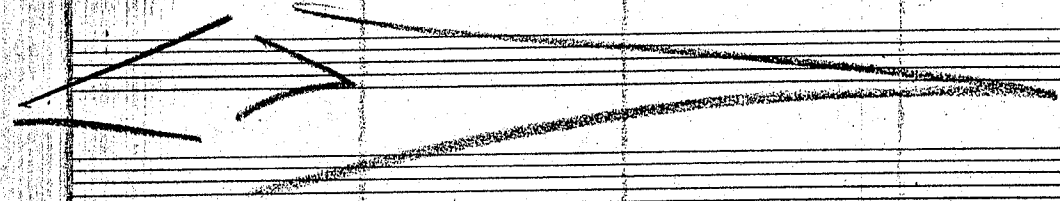
Handwritten musical notation for the Concertina part, including notes, rests, and dynamic markings like *mf* and *p*.

Trump.

Handwritten musical notation for the Trumpet part, including notes, rests, and dynamic markings like *mf* and *p*.

Drum.

Handwritten musical notation for the Drum part, including notes, rests, and dynamic markings like *mf* and *p*.



A section of the musical score that has been heavily scribbled over with dark ink, obscuring the original notation.

Another section of the musical score that has been heavily scribbled over with dark ink, obscuring the original notation.

1st Viol.

Handwritten musical notation for the first Violin part, including notes, rests, and dynamic markings like *mf* and *p*.

2nd Viol.

Handwritten musical notation for the second Violin part, including notes, rests, and dynamic markings like *mf* and *p*.

Alto

Handwritten musical notation for the Alto part, including notes, rests, and dynamic markings like *mf* and *p*.

Violon.

Handwritten musical notation for the Violoncello part, including notes, rests, and dynamic markings like *mf* and *p*.

Contab.

Handwritten musical notation for the Contrabass part, including notes, rests, and dynamic markings like *mf* and *p*.

Celli

Handwritten musical notation for the Cello part, including notes, rests, and dynamic markings like *mf* and *p*.

Fl. *mf* *en dehors*

Hob. *mf* *en dehors* *mf*

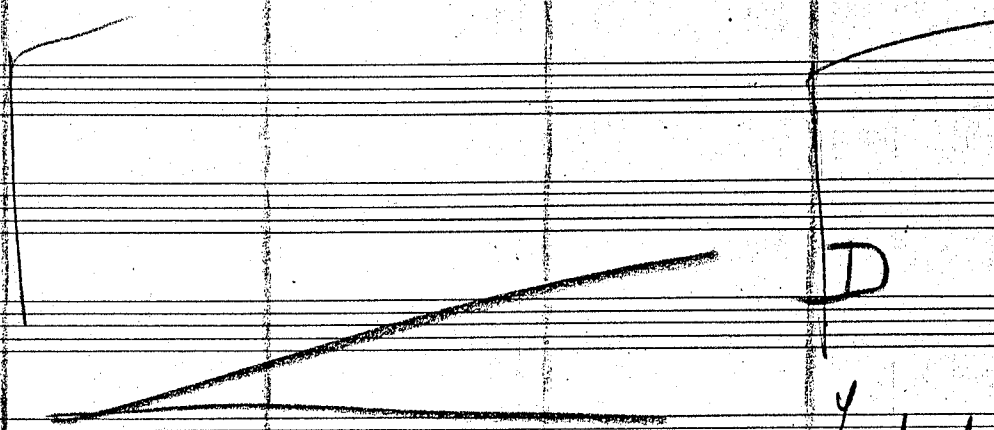
Clarin. *mf* *en dehors*

Basson *mf* *en dehors*

Corn *mf* *1^{re} en dehors*

Tromp. *mf*

ob



1^{re} Viol. *mf* *en dehors*

2^e Viol. *mf* *en dehors*

Alto *mf* *en dehors*

Violon. *mf*

Contab. *mf*

D

Le chant en dehors

D

Fl.

Hr.

Clarin.

Basson

Cor

Tromp.

Tromb.

Handwritten musical score for woodwinds and brass instruments. The score is written on ten staves. The top five staves are for Flute (Fl.), Horn (Hr.), Clarinet (Clarin.), Bassoon (Basson), and Cor. The bottom five staves are for Trompete (Tromp.) and Trombone (Tromb.). The music is in a key with two flats (B-flat major or D minor) and a common time signature. The notation includes various note values, rests, and dynamic markings such as *pp*, *p*, *mf*, and *f*. There are also some handwritten annotations and corrections in the brass section.

1st Viol.

2nd Viol.

Alto

Viola

Contra

Handwritten musical score for string instruments. The score is written on five staves. The top two staves are for Violin 1 (1st Viol.) and Violin 2 (2nd Viol.). The bottom three staves are for Viola, Violoncello (Viola), and Contrabasso (Contra). The music is in a key with two flats and a common time signature. The notation includes various note values, rests, and dynamic markings such as *pp*, *p*, *mf*, and *f*. There are also some handwritten annotations and corrections in the string section.

Fl.

Hrb.

Clarin.

Basson

Corn

Tromp.

Tromb.

Bimbal.

(♩ = 126) *coll*

riteney *insensiblement* *de son caractère*

rit. *3/8*

1^{re} Viol.

2^e Viol.

Alto

Violon.

Contab.

Fl.

Hr.

Clar.

Basson

Cas

Timbals

1^{re} V.

2^e V.

Alt.

Violon.

Contreb.

F

man

très très douce

C

63 = ♩

F

à enchaîné

Mouvement du début

(scat)

A ♩ = 63

mi man

les sordines

mi man

F

Hrb.

Handwritten musical notation for Horns (Hrb.). The staff begins with a treble clef, a key signature of one sharp (F#), and a time signature of 3/4. The notation includes a long melodic line with a slur and a fermata, and a second line starting with a dynamic marking of *pp* and a fermata. The piece concludes with a final note and a fermata.

Basson

Handwritten musical notation for Bassoon. The staff begins with a treble clef, a key signature of one sharp (F#), and a time signature of 3/4. The notation includes a melodic line with a slur and a fermata, and a second line with a dynamic marking of *pp* and a fermata. The piece concludes with a final note and a fermata.

Handwritten musical notation for Bassoon, showing a 3/4 time signature and a treble clef.

Handwritten musical notation for Bassoon, showing a 3/4 time signature and a treble clef.

Handwritten musical notation for Bassoon, showing a treble clef and a final note with a fermata.

Handwritten musical notation for Bassoon, showing a 3/4 time signature and a treble clef.

Handwritten musical notation for Bassoon, showing a 3/4 time signature and a treble clef.

Handwritten musical notation for Bassoon, showing a treble clef and a final note with a fermata.

Handwritten musical notation for Bassoon, showing a 3/4 time signature and a treble clef.

Handwritten musical notation for Bassoon, showing a 3/4 time signature and a treble clef.

ε

1. V.

Handwritten musical notation for Violin I (1. V.). The staff begins with a treble clef, a key signature of one sharp (F#), and a time signature of 3/4. The notation includes a melodic line with a slur and a fermata.

2. V.

Handwritten musical notation for Violin II (2. V.). The staff begins with a treble clef, a key signature of one sharp (F#), and a time signature of 3/4. The notation includes a melodic line with a slur and a fermata.

All.

Handwritten musical notation for Viola (All.). The staff begins with a treble clef, a key signature of one sharp (F#), and a time signature of 3/4. The notation includes a melodic line with a slur and a fermata.

Violone

Handwritten musical notation for Violone. The staff begins with a treble clef, a key signature of one sharp (F#), and a time signature of 3/4. The notation includes a melodic line with a slur and a fermata.

Contra.

Handwritten musical notation for Contrabass (Contra.). The staff begins with a bass clef, a key signature of one sharp (F#), and a time signature of 3/4. The notation includes a melodic line with a slur and a fermata.

ε

ε

ε

ε

Hrb.

Bass

Con

Timb.

1st V.

2nd Viol.

1st Albo solo
sans sonde

alt.

Violon.

Contreb.

Handwritten musical score for orchestra and soloists. The score is written on ten staves. The top three staves are for Horns (Hrb.), Bassoon (Bass), and Contrabass (Con). The middle three staves are for Timpani (Timb.), First Violin (1st V.), and Second Violin (2nd Viol.). The bottom four staves are for Soloist (1st Albo solo), Alto (alt.), Violoncello (Violon.), and Double Bass (Contreb.). The music is in 3/4 time and features various dynamics such as pp, mf, and p. There are several annotations in French, including "mettre les souliers" and "mf bien en action". The score includes notes, rests, and some large handwritten markings like "C", "2", and "3".

3/4

3

4

3

3/4

3/4

3/4

3/4

3/4

3/4

19

3/4 C 2/4 C 3/4 C

Basson

mf > p *tr. solo* *tr. solo* *tr. solo* *tr. solo*

Coro

2=4=4=

mf > p mf > p mf > p mf > p

3/4 2/4 3/4 4/4

Flaute

mf > p mf > p

Timbale

mf > p **pp**

3/4 2/4 3/4 4/4

1^{re} Viol.

mf > p *arco div.* *mf* *pp* *pp*

2^e Viol.

mf > p *mf* *pp* *pp*

Alto solo

mf > p *mf* *pp* *pp*

Alto

mf > p *pizz: sfz les sordines* *pizz*

Violon.

mf > p *mf* *pp* *pp*

Contreb.

mf > p *mf* *pp* *pizz: arco*

22 2/4 C

9

Fl. $\frac{2}{4}$ $\frac{9}{8}$

Hob. $\frac{2}{4}$ $\frac{9}{8}$

Clarin. $\frac{2}{4}$ $\frac{9}{8}$

Basson $\frac{2}{4}$ $\frac{9}{8}$

Cors $\frac{2}{4}$ $\frac{9}{8}$

Tromp. $\frac{2}{4}$ $\frac{9}{8}$

2/4 4/4 9/8

Harpe $\frac{2}{4}$ $\frac{9}{8}$

Tamb. $\frac{9}{8}$ *tr. mmmmm* *ammmmm*

pp G PP

2 C 3

1^{re} Viol. $\frac{2}{4}$ $\frac{9}{8}$ *unis* *ôty les soudins*

2^e Viol. $\frac{2}{4}$ $\frac{9}{8}$ *ôty les soudins*

Alto $\frac{2}{4}$ $\frac{9}{8}$ *arco div.*

Violon. $\frac{2}{4}$ $\frac{9}{8}$ *ôty les soudins*

Tamb. $\frac{2}{4}$ $\frac{9}{8}$

2/4

Fl. *p* *pp* *pp*

Hr. *p*

Clarinet *p* *pp*

Bassoon *p*

Corn *p* *pp*

1st Viol. *p* *pp* *pp*

2nd Viol. *p* *pp* *pp*

Alto *p* *pp* *pp*

Viola *p* *pp* *pp*

Contra *p* *pp* *pp*

unis
en dehors
en dehors
en dehors

Fl.

Hr.

Clarinet

Saxophone

Trp

Handwritten musical score for Flute, Horn, Clarinet, Saxophone, and Trumpet. The score includes notes, rests, and dynamic markings such as p, mf, and f. There are some handwritten annotations and a large 'X' mark on the right side of the page.

A large section of the page consisting of empty musical staves. A large handwritten 'H' and 'f' are visible on the right side of this section.

Violin I

Violin II

Viola

Cello

Double Bass

Handwritten musical score for Violin I, Violin II, Viola, Cello, and Double Bass. The score includes notes, rests, and dynamic markings such as p, mf, and f. There are some handwritten annotations and a large 'H' and 'f' mark on the right side of the page.

Fl. *mf*

Hr. *mf*

Clarin. *mf*

Basson *mf*

Corn *f* *mf*

1st Viol. *mf*

2nd Viol. *mf*

Alto *mf*

Viola *mf*

Celli *mf*

M

Fl.
Hr.
Cl.
Basson
Cor
Tromp.

à 2
p. en dehors
mf
f
pp
solo
à 2
mf
f
mf
Cory 3/3

M

1^{re} Viol
2^e Viol
Alto
Violon.
Contub.

subit.
mf
f
pp
à 2
solo
mf
f
Cory 3/3

M

N

Flute
Hr.
Clar.
Bassoon
Corns

~~Trumpets~~

U6

N

1st Viol.
2nd Viol.
Alto
Violon
Cello

N

Flute
 Hrn.
 Clarinet
 Bassoon
 Cor

1st Viol.
 2^d Viol.
 Viola
 Violon.
 Conch.

Trumh.

1st Viol.
 2^d Viol.
 Alla.
 Violon.
 Conch.

Fl.

Hrb.

Clarinet

Bassoon

Corn

Trumpet

Drum

1st Viol

2nd Viol

Alto

Violon

Contra

Handwritten musical score for a symphony orchestra, page 30, measures 118-120. The score includes parts for Flute, Horn, Clarinet, Bassoon, Corn, Trumpet, Drum, Violin I & II, Viola, Violoncello, and Contrabass. The music is in 4/4 time with a key signature of one flat. It features complex rhythmic patterns, including sixteenth-note runs in the flute and violin parts, and dynamic markings such as *mf*, *f*, and *sf*. A large 'A' is written in the lower right section of the score.

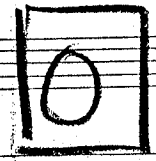


Fl.
Hr.
Clarin.
Bassoon

Corn

Trump.

Drum



Fl.
Hh.
Clarin.
Barons
Cors
Tymbals

Cromb

1st Viol.
2nd Viol.
Alto
Violon
Cemb.

f
et/

Fl.

Hr.

Clarinet

Bassoon

Corn

Trumpet

Trombone

Drum

Handwritten musical notation for woodwinds and percussion, including notes, rests, and dynamic markings like *mf* and *f*.

trump.

fexm

f

1. Violin

2. Violin

Alto

Viola

Contra

Handwritten musical notation for strings, including notes, rests, and dynamic markings like *f* and *sf*.

Fl.

Hr.

Clarin.

Basson

Corn

Trump.

Trumb.

Tromb.

mf

2. Veränderung = 1/4

2

22

P

Fl.
Hh.
Clair.
Basson.
Cor.
Trombon.

P

6
8

Mouvement en 4/8

$\text{♩} = 144$

retarder

1^{er} M^e

$\text{♩} = 63$

1^{re} Viol.
2^e Viol.
Alto
Violon.
Contreb.

P

Fl.

Hh.

Clarin.

Basson

Corn

Trump.

Trum.

Viol.

R

1^{re} V.

2^e V.

Alto

Violon.

Contab.

f bien en dehors

p peu accentue

Final
4

Flute

Hautbois

Clar.

Bassons

Corn

Tromp.

Trombo.

Violoncelle

ff

Allegro gai $\text{♩} = 126$

1^{re} V.

2^e V.

Alto

Violone

Contreb.

Fl.

Hr.

Clarin.

Basson

Coro

Handwritten musical score for woodwinds and strings. The top section includes staves for Flute (Fl.), Horn (Hr.), Clarinet (Clarin.), Bassoon (Basson), and Cor Anglais (Coro). The notation features various notes, rests, and dynamic markings such as 'ff' and 'f'. A large bracket groups the woodwind parts in the middle section.

1st Viol.

2nd Viol.

Alto

Violon.

Contreb.

Handwritten musical score for strings. The bottom section includes staves for 1st Violin (1st Viol.), 2nd Violin (2nd Viol.), Alto, Violoncello (Violon.), and Contrabass (Contreb.). The notation features various notes, rests, and dynamic markings such as 'ff' and 'f'. There are also handwritten annotations like 'Vivace' and 'div'.

Fl.

Hr.

Clarin.

Basson

Corn

1. Viol

2. Viol

Alto

Violon

Contab.

1

Fl
Hr.
Clarin.
Basson
Org.

2

1st Viol.
2nd Viol.
Alto
Violone
Contub.

2

Fl.

Hr.

Clarinet

Bassoon

Corn

tr solo

1st Viol

2nd Viol

Alto

Violon

Contuba

ff

Handwritten musical score for a symphony orchestra, page 132. The score includes staves for Flute, Horn, Clarinet, Bassoon, Corn, Violins, Viola, and Cymbals. The music is in a key with three sharps (F#, C#, G#) and a 4/4 time signature. The score shows a complex arrangement of notes, rests, and dynamic markings such as 'f' and 'ff'. A 'tr solo' marking is present above the Bassoon staff. The page is numbered '132' in the top right corner.

4

Fl.
Hr.
Clarinet
Bassoon
Cor

Solo
p *expansif*

Double
plus
Lent

4
Double plus lent
sans rigueur

$\text{♩} = \text{♩}$ de la mesure précédente
Double plus lent
Batterie toujours à 2

$\text{♩} = 63$

1^{re} Viol.
2^e Viol.
Alto
Violoncelle
Contreb.

mf

4

5

Fl. *mp*

Hrb. *2^o p*

Clarinet *mf*

Bassoon *mp*

Corn *p*

Handwritten musical notation for woodwinds and brass, including dynamic markings and articulation.



3/2 2/2 3/2

Handwritten time signature changes.

3 2 3

Handwritten large numbers, possibly indicating measure counts or section lengths.

1st Viol. *for changing*

2nd Viol. *pizz^o*

Alto *arco*

Violon. *pp*

Contreb. *p*

Handwritten musical notation for strings, including dynamic markings and performance instructions.

5

Fl. *p molto*

Hr. *pp*

Clarinet *p molto*

Bassoon *pp*

Corn *p molto*

Trumpet *troubant*

Harp *mf*

1st Viol. *pp*

2nd Viol. *pp*

Alto *sonore et sostenuto*

Violoncello *pp*

Contreb. *pp*

pp

Fl.

Hrb.

Clarin.

Basson

Corn

Trp.

Trbn.

Handwritten musical notation for woodwinds and brass. The Flute part includes the instruction "ad lib". The Clarinet part includes "solo" and "en dehors". The Trombone part includes "solo" and "pp". The Trumpet part includes "pp".

Handwritten notes: $\frac{3}{4}$, $\frac{4}{4}$, $\frac{4}{4}$, $\frac{4}{4}$

Handwritten circled text: **Vip**

Harpe

Handwritten musical notation for Harp. Includes dynamic markings "mf" and "pp".

Large handwritten numbers: **3**, **2**, **4**, **2**

Handwritten tempo marking: **♩ = 126**

1^{re} Viol

2^e Viol

Handwritten musical notation for Violins. The 1st Violin part includes the instruction "pp hi-lys".

Handwritten musical notation for Violins. The 2nd Violin part includes the instruction "sonora".

Handwritten musical notation for strings. Includes dynamic markings "pp" and "ppp".

Fl.

Hr.

Clarin.

Panous

Cor

Tromp.

Handwritten musical score for woodwinds and brass instruments. The staves are labeled Fl., Hr., Clarin., Panous, Cor, and Tromp. The music is written in a key with three sharps (F#, C#, G#) and a 4/4 time signature. Dynamics include *mf* and *f*. There are various notes, rests, and slurs. A circled number '7' is written above the Clarinet staff.

Handwritten musical score for Trombone. The staff is labeled Tromp. It features a long note with a slur and a dynamic marking of *mf*. Above the staff, the word "solo" is written.

Handwritten scribbles and notes.

Φ

$\text{♩} = 126$

1st V. min

2nd V.

Alto

Violon.

Contreb.

Handwritten musical score for strings. The staves are labeled 1st V. min, 2nd V., Alto, Violon., and Contreb. The music is written in a key with three sharps and a 4/4 time signature. Dynamics include *mf*, *f*, *aug*, and *dim*. There are various notes, rests, and slurs. A circled number '7' is written below the Contreb. staff.

Fl.
Hrb.
Clarin.
Basson

Cor.
Trump.

8

8

Fl. *8^a*

Hr. *8^a*

Clar.

Basson

Cou.

1^a Viol.

2^a Viol.

Alto

Violon.

Contab.

Fl.

Hrb.

Clarin.

Basson

Cor

Trump.

Handwritten musical score for woodwinds and brass instruments. The score includes staves for Flute (Fl.), Horn (Hrb.), Clarinet (Clarin.), Bassoon (Basson), Cor (Trumpet), and Trumpet (Trump.). The music is written in a key signature of two sharps (F# and C#) and a common time signature (C). The score features various musical notations including notes, rests, and dynamic markings such as *f*, *mf*, and *mfz*. A circled number '9' is present at the top of the page, and a circled number '9' is at the bottom of the page.

1st Viol.

2nd Viol.

Alto

Viola

Contreb.

Handwritten musical score for string instruments. The score includes staves for 1st Violin (1st Viol.), 2nd Violin (2nd Viol.), Alto, Viola, and Contrabass (Contreb.). The music is written in a key signature of two sharps (F# and C#) and a common time signature (C). The score features various musical notations including notes, rests, and dynamic markings such as *f*, *mf*, and *mfz*. A circled number '9' is present at the bottom of the page.

Fl. *mf*

Hrb. *mf*

Clarin. *mf*

Basson *f*

Corn *mf*

Tromp *mf*

1st Viol. *f*

2nd Viol. *f*

Alto *f*

Violon. *mf*

mf

Fl.
Hr.
Clarin.
Basson
Cora
Trump.
Trombones
Tromb. 3rd

1st Viol.
2nd Viol.
Alto
Violon.
Cello

10

Fl.

Hr.

Clarin.

Basson

Corn

Trump.

X Tromb.

2:1:2: Bimbal.

10

1st Viol.

2nd Viol.

Alto

Violon.

Contub.

10

Fl.

Hr.

Clar.

Bassoon

Corn

Handwritten musical notation for woodwinds and brass instruments. The staves are labeled Fl., Hr., Clar., Bassoon, and Corn. The notation includes various notes, rests, and dynamic markings such as *f* and *mf*. A large bracket groups the woodwind parts in the final measure, with a *mf* marking below it.

1st Viol.

2nd Viol.

Alto

Violon.

Contab.

Handwritten musical notation for string instruments. The staves are labeled 1st Viol., 2nd Viol., Alto, Violon., and Contab. The notation includes various notes, rests, and dynamic markings such as *f*, *mf*, and *mfz*. A *Div.* marking is present above the 2nd Viol. staff in the final measure.

Fl. *8*

Hr. *X*

Clarin *X*

Panor.

Cors *gr. solo* *f*

Trump. *f*

1st Viol.

2nd Viol.

Alto

Violon.

Contreb.

Fl.
Hr.
Clarin.
Basson.
Corno.
Tromba.

Handwritten musical score for woodwinds and brass. The score is written on six staves. The top staff begins with a melodic line starting on a dotted G. A circled number '11' is written above the second measure. The woodwinds (Flute, Horn, Clarinet, Bassoon) play a melodic line with various articulations and dynamics. The brass (Corno, Tromba) provides harmonic support with sustained notes and some melodic fragments. Dynamics include *mp*, *f*, and *pp*. A *Vp* marking is present in the Tromba staff.

1^a Viol.
2^a Viol.
Alto.
Violone.
Cembalo.

Handwritten musical score for strings and keyboard. The score is written on five staves. A circled number '11' is written above the first measure of the first violin part. The strings (Violin I, Violin II, Viola, Violone) play a melodic line with various articulations and dynamics. The keyboard (Cembalo) provides harmonic support with sustained notes and some melodic fragments. Dynamics include *f* and *pp*.

Fl.
Hr.
Clar.
Sax.
Cor.

Trum.

1st Viol.
2nd Viol.
Alto
Violon.
Contab.

Fl. *8^a*

Hr. *8^a*

Clar.

Basson

Coro

Timbale *mf*

1^{re} Viol.

2^e Viol.

Alto

Violon.

Contub.

12

153

28

Fl.
Hr.
Clar.
Bassoon
Corno

Bimbals

1st Viol.
2nd Viol.
Alto
Violon.
Contreb.

12

Fl. *p* *al. solo*

Hh. *p* *al. solo*

Clarin. *p* *al. solo*

Basson *p* *al. solo*

Cors. *p*

3/2 2/2 3/2

3 2 3

d=d *d=d* *d=d*

1. Viol. *p* *accompanying*

2. Viol. *p* *accompanying*

Alto *p* *accompanying*

Violon. *p* *accompanying*

Contab. *p* *accompanying*

Fl. *mf* *en timi*

Hr. *mf* *en timi*

Clarin. *mf* *en timi*

Basson *mf* *en timi*

Coro *mf* *en timi*

mf

mf

mf

1^{re} Viol. *mf* *chordy* *mf* *mf* *en timi*

2^e Viol. *mf* *en timi*

Alto *mf* *en timi*

Violon. *mf* *en timi*

Contreb. *mf* *en timi*

Fl. *al*
p

Hr. *al*

Clarin. *al*
p

Basson *al*
p

Corn. *al*
p

Trump. *al*
p

pp *al*
pp

Flauto *al*
p

Flauto *al*
p

Timbale *al*
p

pp *al*
pp

1. Viol. *al*
p

2. Viol. *al*
p

Alto *al*
p

Violone *al*
p

Contreb. *al*
p

3
 2
 3

Fl. *mf*

Hr. *mf*

Clarin. *mf*

Basson *mf*

Corn *mf*

Trump. *mf*

Harp

Timbals

Vif

$\text{♩} = 126$

Vif

for M. W. L.

mf

p

mf

mf

mf

mf

9/4

Fl.
Hr.
Clarin.
Basson
Cors

1^{re} Viol.
2^e Viol.
Alto
Violone
Contreb.

17

Fl.

Hr.

Clarin.

Saxons

Con.

Handwritten musical score for Flute, Horn, Clarinet, Saxophones, and Concertina. The score includes notes, rests, and dynamic markings such as 'mf', 'f', and 'p'. There are also some handwritten annotations like 'a2' and 'ga'.

Handwritten musical notation showing three time signatures: 3/9, 2/9, and 3/2.

d=d

d=d

1st Viol.

2nd Viol.

Alto

Violon.

Contra.

Handwritten musical score for Violins, Viola, Violoncello, and Contrabass. The score includes notes, rests, and dynamic markings such as 'mf', 'f', and 'p'. There are also some handwritten annotations like 'm', 'aug', and 'tark'.

17

Fl. *mf* *aug* *men* *ly* *ff*

Hr. *mf* *aug* *men* *ly* *ff*

Clar. *f* *mf* *ff*

Basson *mf* *aug* *men* *ly* *ff*

Corn *f* *mf* *ff*

Trumpets *mf* *ff*

Trumps. 1-2 *mf* *ff*

Trumps. 3-4 *mf* *ff*

Timbals *p* *mf* *f* *ff*

Larg.

ff

1st Viol. *f* *en* *aug* *men* *tant* *ff*

2nd Viol. *f* *en* *aug* *men* *tant* *ff*

Alto *f* *en* *aug* *men* *tant* *ff*

Violon. *f* *en* *aug* *men* *tant* *ff*

Contab. *f* *en* *aug* *men* *tant* *ff*

Fl.

Hob.

Clar.

Basson

Cor

Tromp.

Truho.

1^{re} Viol.

2^e Viol.

Alto

Violon.

Contub.

18

Fl.

Hob.

Clarin.

Basson

Cors

18

1^{re} Viol.

2^e Viol.

Alto

Violon.

Cochel.

18

Fl. *f*

Hr.

Clarinet

Bassoon

Corn

Trumpet

Trombone

Cymbals

1st Viol.

2nd Viol.

Alto

Violon

Contra.

Fl.
Hr.
Clarin.
Saxoph.
Cor.
Trump.
Tromb.

||| *Segue*

1st Viol.
2nd Viol.
Alto
Violon.
Contab.

Fl.

Hr.

Clarin.

Basson

Corn.

Trump.

Trum.

Timbals

1st Viol.

2nd Viol.

Alto

Violon.

Contra.

Fl. *ff*

Hrb. *ff*

Clarin. *ff*

Basson *ff*

Cors

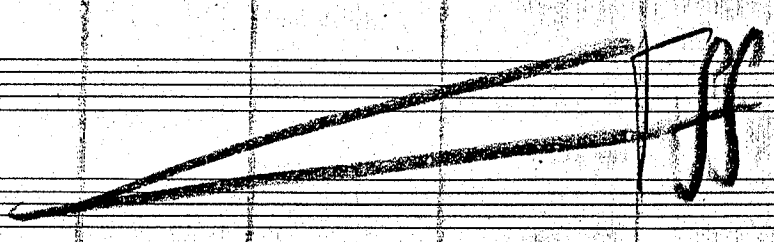
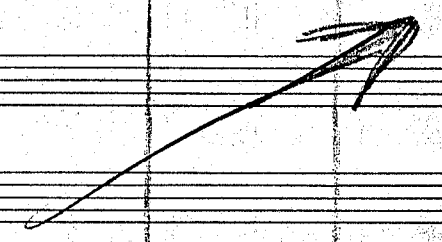
Tromp.

Tromb.

Viola

mf mf mf mf mf

Urnationes



1. Viol. *ff*

2. Viol. *ff*

Alto *ff*

Viola *ff*

Contra *ff*

Fl.

Hr.

Clarin.

Basson

Cors

Trump.

Tromb.

Bimbals

2 3 4 5

sec

1^{re} Viol.

2^e Viol.

Altos

Violone

Contreb.