

Allegro Sinfonia

Violino I^{mo}

Handwritten musical score for Violino I of a Sinfonia, marked *Allegro*. The score consists of 12 staves of music in G major (one sharp) and 2/4 time. The notation includes various musical symbols such as treble clefs, key signatures, time signatures, notes, rests, and dynamic markings like *pia.* and *for:*. The music is written in a fluid, handwritten style with some ink bleed-through visible from the reverse side of the page.

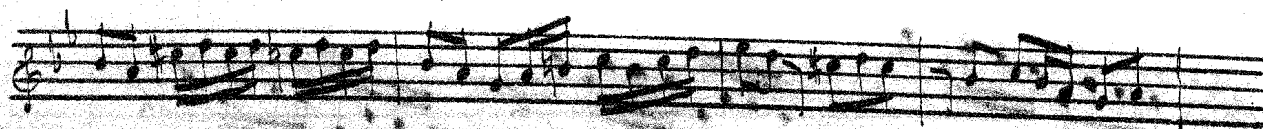
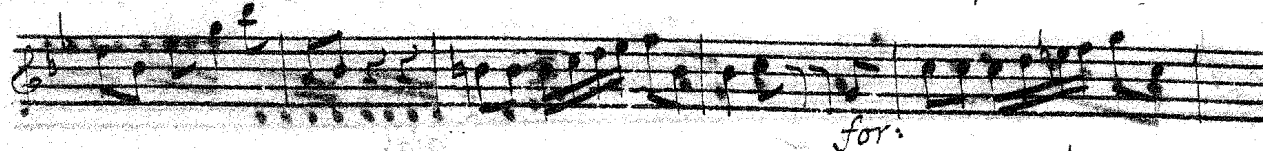
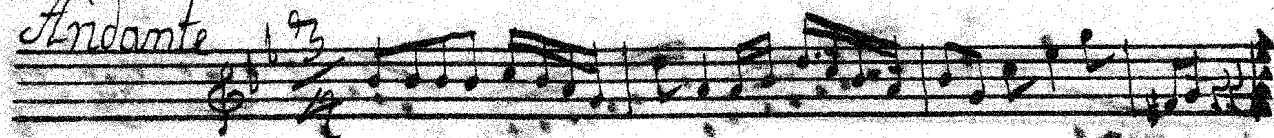
Orkester
Rov

Handwritten musical score for Orkester Rov, consisting of 12 staves of music. The notation includes various musical symbols such as treble clefs, key signatures, time signatures, notes, rests, and dynamic markings like "pia:" and "for:". The score concludes with a double bar line and a fermata.



Andante

$\frac{93}{12}$



Allegro

$\frac{93}{8}$



Handwritten musical score on ten staves. The notation includes treble clefs, a key signature of one flat (B-flat), and a common time signature (C). The first staff contains the handwritten markings *for:* and *pia:*. The music features a variety of note values, including eighth and sixteenth notes, as well as rests. There are several instances of beamed sixteenth notes, suggesting a fast or rhythmic section. The notation is somewhat dense and appears to be a working draft or a handwritten manuscript. The final staff ends with a double bar line and a fermata.

Allegro *Sinfonia*

Violino 2^{do}

Handwritten musical score for Violino 2do, Sinfonia, Allegro. The score consists of 12 staves of music in G major (one sharp) and 2/4 time. The notation includes various musical symbols such as treble clefs, key signatures, time signatures, and dynamic markings like 'pia:', 'for:', and 't' (tutti). The music features a mix of eighth and sixteenth notes, often beamed together in groups, and some rests. The handwriting is in ink on aged paper.

Orkester
Rar

A handwritten musical score for orchestra, consisting of 12 staves. The notation is in treble clef with a key signature of one flat (B-flat). The score features a variety of musical elements including eighth and sixteenth notes, rests, and dynamic markings. The word "pia:" is written on the fourth staff, and "for:" is written on the seventh staff. The score concludes with a double bar line and a lyre symbol in a circle on the twelfth staff.

Andante

Handwritten musical score for the *Andante* section, measures 1 through 12. The music is written on a single staff in treble clef, key of B-flat major (two flats), and 3/4 time. The tempo is marked *Andante*. The notation includes various note values, rests, and dynamic markings. Measures 1-4 contain a series of eighth and sixteenth notes. Measures 5-8 feature a more complex rhythmic pattern with many beamed sixteenth notes. Measures 9-12 show a continuation of the melodic line with some rests and a final double bar line. Dynamic markings include *for.* (forte) and *pia.* (piano). There are also some handwritten annotations like *12:* and *13:* below the staff.

Allegro

Handwritten musical score for the *Allegro* section, measures 1 through 2. The music is written on a single staff in treble clef, key of B-flat major (two flats), and 3/4 time. The tempo is marked *Allegro*. The notation includes various note values, rests, and dynamic markings. Measures 1-2 show a continuation of the melodic line with some rests and a final double bar line. A dynamic marking of *pia.* (piano) is present below the staff.

A handwritten musical score on 11 staves. The notation is in a single system, likely for a piano or similar instrument. The key signature has two flats (B-flat and E-flat), and the time signature is 3/4. The score begins with a treble clef and a key signature change from two flats to one flat (F major). The first staff contains the dynamic markings *for:*, *pia:*, and *for:* under the first, second, and third measures respectively. The music consists of a single melodic line with various note values, including eighth and sixteenth notes, and rests. There are several slurs and ties throughout the piece. The handwriting is somewhat messy, with some ink bleed-through and smudges. The paper appears aged and slightly discolored.

Sinfonia.

Basso.



Orkester
har



Andante G major $\frac{3}{4}$

piano.

Segue

Allegro. $\text{C}\flat$ $\frac{3}{8}$

Symphonia

Vinno Grino

Allegro

A handwritten musical score on aged, slightly stained paper. The title 'Symphonia' is written in a large, elegant cursive script at the top left, and 'Vinno Grino' is written in a similar script to its right. Below the title, the tempo 'Allegro' is written in a smaller cursive hand. The score consists of ten staves of music, each beginning with a treble clef and a key signature of two flats (B-flat and E-flat). The notation is dense, featuring many beamed sixteenth and thirty-second notes, suggesting a fast and intricate melody. Dynamic markings are written in cursive below the staves: 'piano' appears on the second, fourth, and sixth staves; 'forte' appears on the third, fifth, seventh, and eighth staves; and 'pia' (likely a shorthand for piano) appears on the sixth staff. There are also several 'h' markings, possibly indicating hairpins or specific articulation. The paper shows signs of age, including some foxing and a slightly irregular edge. The overall style is that of a personal manuscript or a composer's draft.



Orchestra
Bar

A handwritten musical score for an orchestra, consisting of 11 staves. The notation is in treble clef with a key signature of two flats (B-flat and E-flat). The music is characterized by dense, rapid passages, often using sixteenth and thirty-second notes. Dynamics are indicated by handwritten text: *piano* appears on the fifth, sixth, and tenth staves, while *forte* appears on the seventh and eighth staves. Articulation is marked with 'acc' (accents) and 'l' (legato) above various notes. The paper is aged and shows some staining, particularly along the right edge.

Andante 3/4

Handwritten musical notation on a single staff, featuring a treble clef, a key signature of two flats (B-flat and E-flat), and a 3/4 time signature. The notation includes a series of eighth and sixteenth notes, some beamed together, and rests.

Handwritten musical notation on a single staff, continuing the piece. It features a treble clef, a key signature of two flats, and a 3/4 time signature. The notation includes a series of eighth and sixteenth notes, some beamed together, and rests.

Handwritten musical notation on a single staff, continuing the piece. It features a treble clef, a key signature of two flats, and a 3/4 time signature. The notation includes a series of eighth and sixteenth notes, some beamed together, and rests. The word *piano* is written below the staff.

Handwritten musical notation on a single staff, continuing the piece. It features a treble clef, a key signature of two flats, and a 3/4 time signature. The notation includes a series of eighth and sixteenth notes, some beamed together, and rests. The word *piano* is written below the staff.

Handwritten musical notation on a single staff, continuing the piece. It features a treble clef, a key signature of two flats, and a 3/4 time signature. The notation includes a series of eighth and sixteenth notes, some beamed together, and rests.

Handwritten musical notation on a single staff, continuing the piece. It features a treble clef, a key signature of two flats, and a 3/4 time signature. The notation includes a series of eighth and sixteenth notes, some beamed together, and rests. The word *piano* is written below the staff.

Handwritten musical notation on a single staff, continuing the piece. It features a treble clef, a key signature of two flats, and a 3/4 time signature. The notation includes a series of eighth and sixteenth notes, some beamed together, and rests.

Handwritten musical notation on a single staff, continuing the piece. It features a treble clef, a key signature of two flats, and a 3/4 time signature. The notation includes a series of eighth and sixteenth notes, some beamed together, and rests.

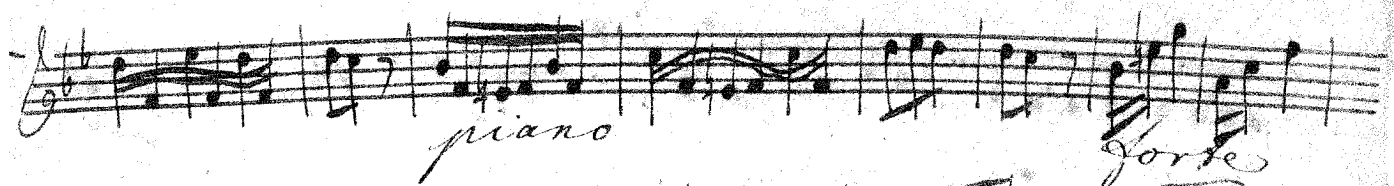
Handwritten musical notation on a single staff, continuing the piece. It features a treble clef, a key signature of two flats, and a 3/4 time signature. The notation includes a series of eighth and sixteenth notes, some beamed together, and rests. The word *piano* is written below the staff.

Two empty musical staves at the bottom of the page.

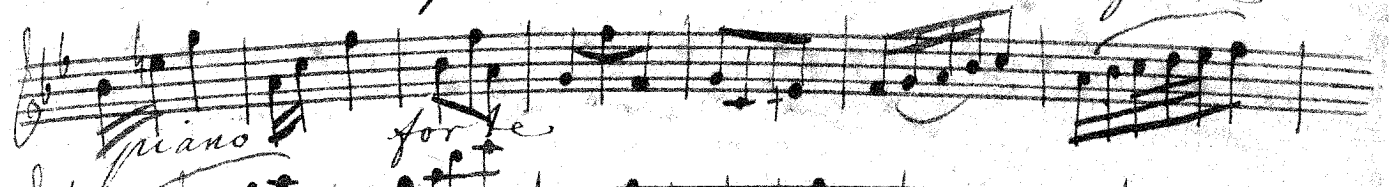
Allegro assai



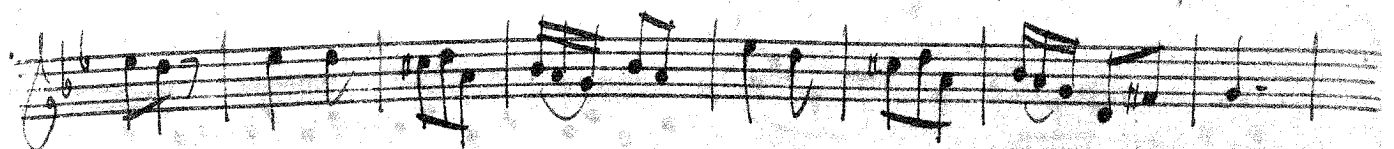
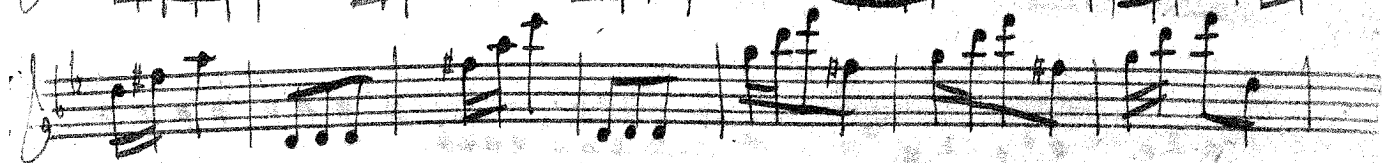
piano



piano *forte*



forte



Symphonia

Violino Secondo

Allegro

Handwritten musical score for Violino Secondo, Symphonia, Allegro. The score consists of 11 staves of music in G major (one sharp) and 2/4 time. The notation includes various musical symbols such as notes, rests, beams, and slurs. Dynamic markings like "piano" and "forte" are written in cursive. There are also some handwritten annotations like "pia" and "tr".

Orchestra
Pav

A handwritten musical score for an orchestra, consisting of ten staves. The notation is in a single system, with each staff beginning with a treble clef and a key signature of one flat (B-flat). The music is written in a fluid, cursive style, featuring a variety of note values, rests, and dynamic markings. The first staff includes a 'w' marking above the first measure. The second staff has a 'piano' marking below the first measure. The third staff has a 'for' marking below the first measure. The fourth staff has a 'b' marking below the first measure. The fifth staff has a 'p' marking below the first measure. The sixth staff has a 'p' marking below the first measure. The seventh staff has a 'p' marking below the first measure. The eighth staff has a 'p' marking below the first measure. The ninth staff has a 'p' marking below the first measure. The tenth staff has a 'p' marking below the first measure. The score concludes with a double bar line and a circled '6' at the bottom left.