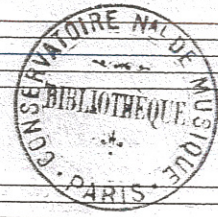


2525

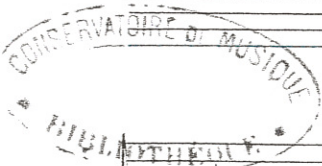
II
A
15



Morceau de Concert
pour Cor
~~Fantaisie pour Cor~~

Saint-Saëns ~~87~~ 94

Col. 4605



Ms. 663 (2)

Musical notation on a staff, including a treble clef, a key signature of one flat, and several notes with stems. There are also some handwritten markings below the staff, possibly indicating dynamics or performance instructions.

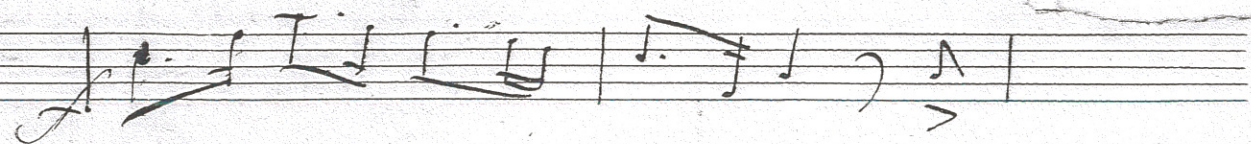
Morceau de Concert
pour Cor

C. Saint Saëns
Op. 94

no plus haut que la note rélle

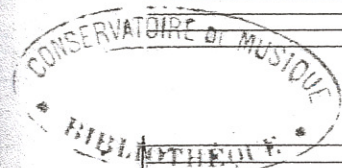


All. moderato



62 (+)

Piano



(+) Corde... sans suspension, en cet endroit, une octave plus haut que la note réelle
 elle s'élève sur le...
 elle s'élève sur le...

Handwritten musical notation on a single staff. The notation includes various rhythmic values, accidentals, and dynamic markings. A circled '10' is written above the staff. The key signature is one flat (B-flat).

Handwritten musical notation on a single staff. The notation includes various rhythmic values, accidentals, and dynamic markings. A circled '10' is written above the staff. The key signature is one flat (B-flat).

Handwritten musical notation on a single staff. The notation includes various rhythmic values, accidentals, and dynamic markings. A circled '10' is written above the staff. The key signature is one flat (B-flat).

Handwritten musical score, first system. It consists of three staves. The top staff has a treble clef and a key signature of one flat (B-flat). It begins with a dynamic marking *f* and contains measures 1 through 9. The middle and bottom staves are grouped by a brace on the left and contain bass clefs and a key signature of two flats (B-flat, E-flat). Measure 9 includes a *cresc.* marking. The system concludes with a double bar line.



Handwritten musical score, second system. It consists of three staves. The top staff has a treble clef and a key signature of one flat. It contains measures 10 through 16. The middle and bottom staves are grouped by a brace on the left and contain bass clefs and a key signature of one flat. Measure 10 includes a dynamic marking *p*. Measure 16 includes a dynamic marking *f*. The system concludes with a double bar line.

Handwritten musical score, third system. It consists of three staves. The top staff has a treble clef and a key signature of one flat. It contains measures 17 through 23. The middle and bottom staves are grouped by a brace on the left and contain bass clefs and a key signature of one flat. Measure 17 includes a dynamic marking *p*. The system concludes with a double bar line.

Handwritten musical notation on a page with a torn left edge. The system consists of three staves. The top staff has a treble clef and a key signature of one flat (B-flat). It contains several measures of music with notes, rests, and slurs. The middle and bottom staves are grouped by a brace on the left and contain bass clefs and a key signature of one flat. The bottom staff has a '3' written below it in the first measure. The system ends with a double bar line and a fermata.

Handwritten musical notation on a page with a torn left edge. The system consists of three staves. The top staff has a treble clef and a key signature of one flat. It contains several measures of music with notes, rests, slurs, and some crossed-out passages. The middle and bottom staves are grouped by a brace on the left and contain bass clefs and a key signature of one flat. The bottom staff has a '6' written below it in the first measure. The system ends with a double bar line and a fermata.

Handwritten musical notation on a page with a torn left edge. The system consists of three staves. The top staff has a treble clef and a key signature of one flat. It contains several measures of music with notes, rests, and slurs. The middle and bottom staves are grouped by a brace on the left and contain bass clefs and a key signature of one flat. The bottom staff has a '12' written below it in the fifth measure. The system ends with a double bar line and a fermata.

Handwritten musical score, first system. It consists of three staves. The top staff is a single melodic line with various ornaments and slurs. The middle and bottom staves are grouped by a brace and contain accompaniment with chords and rhythmic patterns. A circled '11' is written above the top staff.

On peut passer au signe ♩ pour 7.



Handwritten musical score, second system. It consists of three staves. The top staff has a melodic line with slurs. The middle and bottom staves are grouped by a brace and contain accompaniment. Handwritten numbers 8 through 16 are written above the staves, indicating measure numbers. A circled '11' is written above the top staff.

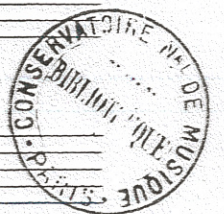
Handwritten musical score, third system. It consists of three staves. The top staff is a single melodic line with slurs and ornaments. The middle and bottom staves are grouped by a brace and contain accompaniment. Handwritten numbers 17 and 18 are written above the staves, indicating measure numbers.

Handwritten musical notation for the first system. The top staff is a treble clef staff with notes and rests, including accents and slurs. The bottom two staves are a grand staff with piano accompaniment, including a bass clef staff with notes and rests.

Handwritten musical notation for the second system. The top staff is a treble clef staff with notes and rests, including accents and slurs. The bottom two staves are a grand staff with piano accompaniment, including a bass clef staff with notes and rests.

Handwritten musical notation for the third system. The top staff is a treble clef staff with notes and rests, including accents and slurs. The bottom two staves are a grand staff with piano accompaniment, including a bass clef staff with notes and rests.

Handwritten musical notation for the first system, including a treble clef staff and a grand staff. The notation includes notes, rests, and dynamic markings such as *pp*. A key signature of one flat is indicated. A circled *4* is written above the first staff. Measure numbers 8, 9, 10, and 11 are written above the grand staff. A circled *20* is written below the grand staff. A circled *23* is written below the grand staff.



Handwritten musical notation for the second system, including a grand staff. Measure numbers 12, 13, 14, 15, 16, 17, and 18 are written above the grand staff. A circled *25* is written below the grand staff. A circled *27* is written below the grand staff. A circled *H-5* is written below the grand staff. The word "Rit" is written above the grand staff.

Adagio

Handwritten musical notation for the third system, including a grand staff. The notation includes notes, rests, and dynamic markings such as *pp*. A circled *3* is written below the grand staff.

espressivo

Handwritten musical score for the first system. The top staff is a vocal line with a melodic line and a long slur. The piano accompaniment consists of two staves with chords and some melodic fragments. The key signature has two flats, and the time signature is common time.

son banchi

Handwritten musical score for the second system. The top staff is a vocal line with a melodic line and a long slur. The piano accompaniment consists of two staves with chords and some melodic fragments. The key signature has two flats, and the time signature is common time.

dim.

Handwritten musical score for the third system. The top staff is a vocal line with a melodic line and a long slur. The piano accompaniment consists of two staves with chords and some melodic fragments. The key signature has two flats, and the time signature is common time.

4

Handwritten musical notation for the first system, consisting of three staves. The top staff contains a melodic line with various notes and rests, including a circled '4' above it. The middle and bottom staves contain accompaniment with chords and moving lines. Dynamics include *mp* and *cresc.*

12

Handwritten musical notation for the second system, consisting of three staves. The top staff has a melodic line with a sharp sign. The middle and bottom staves feature dense chordal textures. Dynamics include *cresc.* and *mp*. A measure number '15' is written below the bottom staff.



Handwritten musical notation for the third system, consisting of two staves. The top staff features a melodic line with a dynamic marking of *mp*. The bottom staff contains accompaniment with a dynamic marking of *pp*.

Handwritten musical notation for the fourth system, consisting of three staves. The top staff has a melodic line with a dynamic marking of *mp*. The middle and bottom staves contain accompaniment with a dynamic marking of *pp*. A measure number '15' is written below the bottom staff.

Handwritten musical notation for the first system. It consists of a single staff at the top and a grand staff (treble and bass clefs) below it. The music is written in a key signature of two flats (B-flat and E-flat) and a common time signature (C). The notation includes various note values, rests, and slurs. A handwritten number '219' is written below the grand staff.

All: non troppo

Handwritten musical notation for the second system. It consists of a single staff at the top and a grand staff below it. The tempo marking *All: non troppo* is written above the single staff. The music is written in a common time signature (C). The notation includes various note values, rests, and slurs. A handwritten number '12' is written below the grand staff, and a handwritten number '24' is written below the single staff. A handwritten number '6-7' is written below the grand staff.

Handwritten musical notation for the third system. It consists of a single staff at the top and a grand staff below it. The music is written in a common time signature (C). The notation includes various note values, rests, and slurs. A handwritten number '11' is written below the grand staff.

Handwritten musical score, first system. It consists of three staves. The top staff is a single line with a treble clef and a key signature of three flats. The middle and bottom staves are grouped by a brace and contain piano accompaniment. The music includes various note values, rests, and dynamic markings.

Handwritten musical score, second system. It consists of three staves. The top staff features a melodic line with a long slur and the handwritten word "cantabile" above it. The middle and bottom staves are piano accompaniment. There are several dynamic markings such as *pp*, *p*, and *f*, and some numerical annotations like "10" and "9".



Handwritten musical score, third system. It consists of three staves. The top staff has a melodic line with a slur and a circled "11" above it. The middle and bottom staves are piano accompaniment. The system concludes with a time signature change to 12/8 and a sequence of numbers 1 through 8 written above the staff.

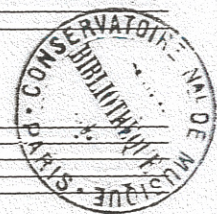
Handwritten musical score for the first system. It consists of a vocal line on a single staff and piano accompaniment on two staves. The vocal line begins with a long note, followed by a series of eighth and sixteenth notes. The piano accompaniment features a steady eighth-note bass line and chords in the right hand. Handwritten numbers 9, 10, 11, and 12 are placed below the vocal line, likely indicating measure numbers. A large slur covers the entire first system.

Handwritten musical score for the second system. It includes a vocal line and piano accompaniment. The vocal line has a handwritten annotation above it: "on peut parler antique § par 13" and "ollia". The piano accompaniment continues with similar rhythmic patterns. Handwritten numbers 9, 10, and 11 are visible below the vocal line. A large slur covers the second system.

Handwritten musical score for the third system. It features a vocal line and piano accompaniment. The piano accompaniment shows a more complex texture with sixteenth-note runs in the right hand. A large slur covers the third system.

Four empty musical staves at the bottom of the page, indicating the end of the written music on this page.

Handwritten musical score for the first system. The top staff is in treble clef with a key signature of one flat (B-flat). It contains a melodic line with various note values and slurs. The bottom two staves are a grand staff (treble and bass clefs) with piano accompaniment, including chords and arpeggiated figures. A handwritten 'x' is present below the bass staff.



Handwritten musical score for the second system. The top staff is in treble clef with a key signature of one flat. It features a melodic line with slurs and a fermata. The bottom two staves are a grand staff with piano accompaniment, showing chords and rhythmic patterns. A handwritten '10' is at the end of the system.

Handwritten musical score for the third system. The top staff is in treble clef with a key signature of one flat. It contains a melodic line with slurs and a fermata. The bottom two staves are a grand staff with piano accompaniment, including chords and a long note with a fermata. A handwritten "13 / 10" is at the bottom right of the system.

Handwritten musical score for the first system. It features a treble clef staff with a key signature of one flat and a 4/4 time signature. The notation includes a series of notes with dynamic markings such as *ff* and *f*. A section of the score is heavily scribbled out with dark ink. Below the treble staff is a grand staff consisting of two staves, with the left hand part in bass clef and the right hand part in treble clef, both in the same key signature and time signature.

Handwritten musical score for the second system. The treble staff begins with the instruction *tutta forza* written in cursive. The notation continues with various note values and rests. The grand staff below shows the accompaniment for both hands, with some notes marked with accents.

Handwritten musical score for the third system. The treble staff starts with a *Rit.* (ritardando) marking. The notation includes a wavy line indicating a gradual change in tempo. The grand staff continues the accompaniment. The page number '10' is written at the bottom right of this system.

Handwritten musical score on three staves. The top staff is a treble clef with a key signature of one flat (B-flat). The middle and bottom staves are grouped by a brace on the left and contain bass clef notation. The music includes various notes, rests, and dynamic markings. A circular stamp is visible on the right side of the staves.



13
11

© 1877

[Handwritten signature]