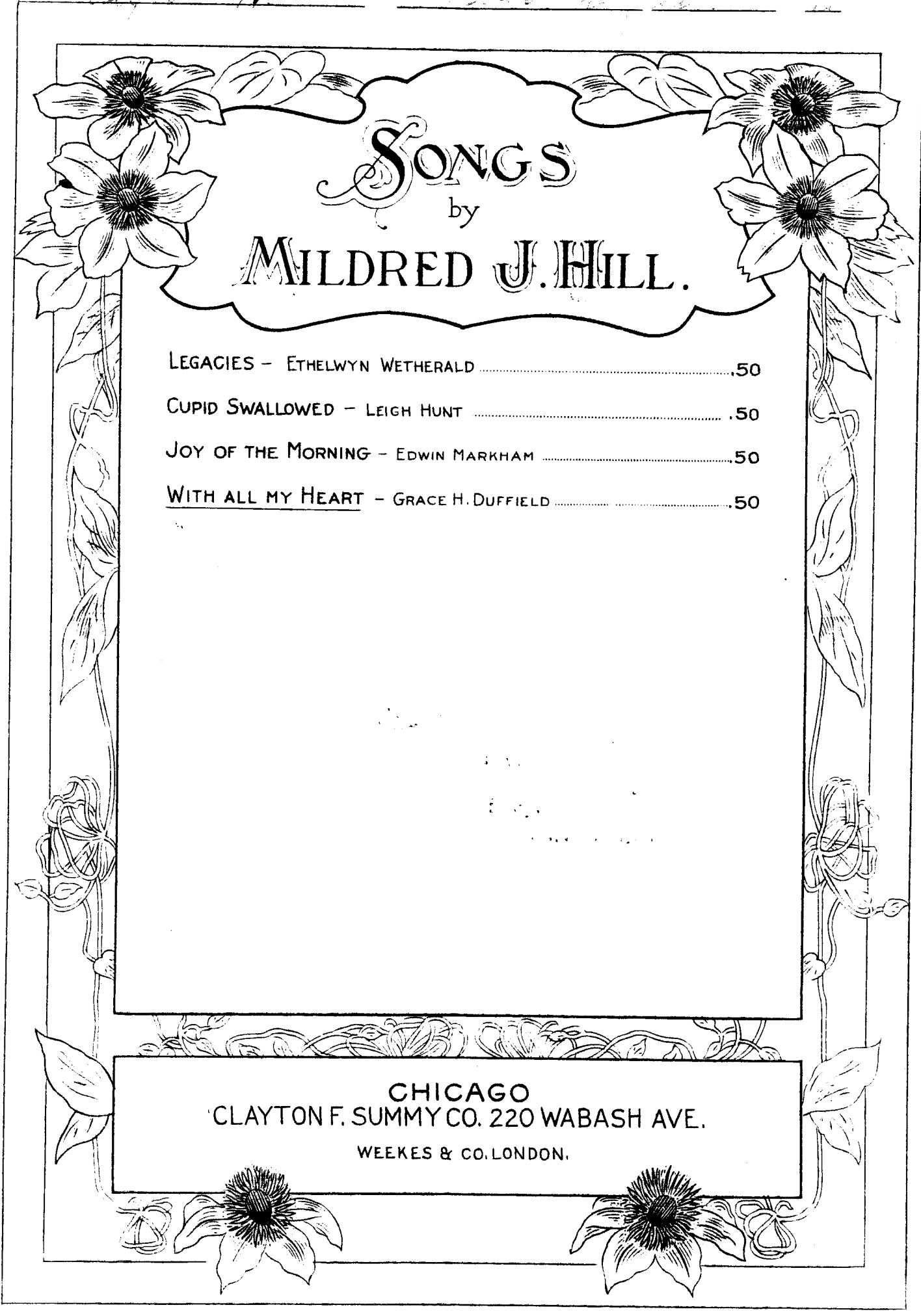


*For the Heart of the World
in the world
May 9th 1914*



SONGS
by
MILDRED J. HILL.

LEGACIES - ETHELWYN WETHERALD50
CUPID SWALLOWED - LEIGH HUNT50
JOY OF THE MORNING - EDWIN MARKHAM50
<u>WITH ALL MY HEART</u> - GRACE H. DUFFIELD50

CHICAGO
CLAYTON F. SUMMY CO. 220 WABASH AVE.
WEEKES & CO. LONDON.

WITH ALL MY HEART.

The sweetest songs I ever sing
Are those I sing to you;
The deepest thoughts that I can bring
Are thoughts I never knew
Until your soft eyes questioning
Had made me question, too.

My soul lies open to your sight,
When all the world's away;
Like that pale flower that at night,
As ancient legends say,
Unfolds beneath the moon's clear light,
And dies at dawn of day.

Grace Duffield.

WITH ALL MY HEART.

GRACE H. DUFFIELD.

MILDRED J. HILL.

1. The

Dreamily.

sweet - est songs I ev - er sing Are those I sing to
 soul lies o - pen to your sight, When all the world's a -

you; The deep - est thoughts that I can bring Are
 way, Like that pale flow - er that at night, As

Copyright 1908 by Clayton F. Summy Co.
International Copyright.

C. F. S. Co. 1024

thoughts I nev - er knew Un - til your soft eyes
an - cient le - gends say, Un - folds be - neath the



ques - tion - ing, Your soft eyes ques - tion - ing Had
moons' clear light, Be - neath the moons clear light, And



1.
made me ques - tion, ques - tion, too.
dies at dawn, at dawn of



2.
2. My day.



WITH ALL MY HEART.

GRACE H. DUFFIELD.

MILDRED J. HILL.

Dreamily.

1. The sweet - est songs I ev - er
soul lies o - pen to your



sing sight, Are those I sing to you; The
When all the world's a - way, Like



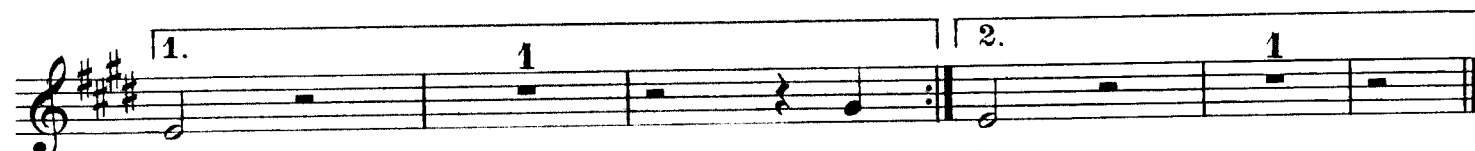
deep - est thoughts that I can bring Are thoughts I nev - er
that pale flow - er that at night, As an - cient le - gends



knew Un - til your soft eyes ques - tion - ing, Your
say, Un - folds be - neath the moon's clear light, Be -



soft eyes ques - tion - ing Had made me ques - tion, ques - tion,
neath the moon's clear light, And dies at dawn, at dawn of



too.

2. My day.

DESIRABLE SONGS

Published by

CLAYTON F. SUMMY CO.,

220 Wabash Ave., Chicago, Ill.

SECULAR.

BIRD, P. DOUGLAS, Love, Canst Thou Remember? <i>Medium Voice</i>50
BORCH, GASTON, Meditation, <i>Medium Voice</i>50
Why I Sing, <i>Medium Voice</i>40
BURNHAM, CHAS. S., A Question, <i>Low Voice</i>60
Ah, Restless Heart! <i>Low Voice</i>40
COLE, ROSSETTER G., Just For This, <i>Medium Voice</i>50
Lullaby, <i>Medium Voice</i>50
Unnumbered, <i>High Voice</i>50
The Violet, <i>Medium Voice</i>50
DEVRIES, HERMAN, Le Meilleur Moment des Amours, <i>High Voice</i>50
Tu Verras, <i>High Voice</i>50
EVERSOLE, ROSE MANSFIELD, Daffodils, 2 Keys50
My World Within Thy Heart, 2 Keys60
FISHER, MYRTLE R., Mister Dream-Maker, <i>Medium Voice</i>50
Oh, Had I Words, <i>High Voice</i>50
Stolen, <i>High Voice</i>50
GANZ, RUDOLPH, Annie in the Garden, <i>High Voice</i>60
Love's Rhapsody, <i>Medium Voice</i>60
GAYNOR, JESSIE L., Flowers' Cradle Song, <i>Low Voice</i>50
The Jap Doll, <i>Medium Voice</i>50
Lest Winter Come, <i>Low Voice</i>50
Maureen, <i>High Voice</i>50
Only a Rose, <i>Medium Voice</i>50
A Valentine, <i>Medium Voice</i>50
HILL, MILDRED J., Cupid Swallowed, <i>High Voice</i>50
Legacies, <i>Medium Voice</i>50
JONES, HERBERT DALE, Thought Fancies, 2 Keys60
KROEGER, E. R., To a White Rose, <i>High Voice</i>50
POND, ADA L., Lullaby (Violin Obligato) <i>Low Voice</i>50
SCHAEFER, G. A. GRANT, - A Lament, <i>Low Voice</i>25
The Moon Man, 2 Keys50
Sleepy Song, 2 Keys50
SCHNEIDER, EDW. F., The Deep Sea Pearl, <i>Medium Voice</i>50
The Eagle, <i>Medium Voice</i>50
To the Moon, <i>Medium Voice</i>50
WEIDIG, ADOLF, Good-Night, <i>Medium Voice</i>50
Let Her In, <i>High Voice</i>60
WHEELER, CHARLES E., You're in Love, <i>Medium Voice</i>50
WILKINS, JULIA, Absence, <i>Medium Voice</i>50
Fireflies, <i>Medium Voice</i>50
Night, <i>Medium Voice</i>50
Slumber Song, <i>Medium Voice</i>50
Unless, <i>Medium Voice</i>50

SACRED.

ABBOTT, JANE B., Alone with God, 2 keys50
Just for To-day, 2 keys50
ADAMS, MARGARET J., Still With Thee, O My God, 2 Keys40
BIRD, P. DOUGLASS, Shadows, <i>Medium Voice</i>50
That Shadowland so Beautiful, <i>High Voice</i>50
BLUMENSCHNEIN, W. L., Peace on Earth and Mercy Mild, 2 Keys50
DARLING, C. S., Sun of My Soul, <i>High Voice</i>60
FOERSTER, AD. M., Christ, the Lord, is Risen, 2 Keys60
GAYNOR, JESSIE L., The Birth and the Resurrection, 2 Keys50
Star of Bethlehem, <i>Medium Voice</i>50
GLOVER, WILLIAM LEWIS, O, Thou Afflicted, <i>Low Voice</i>60
GOOKINS, GEO. B., Behold the Lamb of God, <i>Low Voice</i>75
HARRIS, H. W., The King Eternal, 3 Keys75
Shepherd of Israel, 3 Keys50
HEMINGWAY, GRACE H., God Laid Me Aside to Rest Me, <i>Low Voice</i>40
HERBERT, W. RHYS-, Jesus, Friend of Little Children, <i>Med. Voice</i>50
HOWARD, GEO. H., Jesus, The Very Thought of Thee, <i>Med. Voice</i>40
JENKS, CHANCELLOR, Bow Down Thine Ear, 3 Keys60
LEO, ERNEST A., The Mercy Seat, <i>Low Voice</i>60
NEIDLINGER, W. H., Be Thou Strong, 2 Keys50
Life Again To-day, 2 Keys50
O Salutaris (E. & L. text) 2 Keys40
To Victory, 2 Keys50
OWEN, JULIA D., Dear Lord I Come to Thee, <i>Medium Voice</i>25
OWEN, WM. MORETON, O Jesus, Thou Art Standing, <i>Medium Voice</i>50
PONTIUS, W. H., The Celestial City, 3 Keys75
" " " " " Vo. Fl. & Cel. Obligatos	1.25
SCHAEFER, G. A. GRANT, I Heard the Voice of Jesus Say, <i>Med. Voice</i>65
SPRY, WALTER, God is Near, <i>Medium Voice</i>50
How Beauteous on the Mountains, <i>Medium Voice</i>40
Salvation to our God, 2 Keys75
TRACY, GEO. L., Father, Thou Knowest, <i>Low Voice</i>50
WADE, BRYANT E., When This Passing World is Done, <i>High Voice</i>40
WEST, JOHN A., Art Thou Weary? <i>Medium Voice</i>50
It Came Upon a Midnight Clear, 2 Keys50
That Sweet Story of Old, 2 Keys50
WINTERBERGER, ALEX, Our Father (E. & G. text) <i>Medium Voice</i>25
WRIGHTSON, H. J., Jesus Tender Shepherd, <i>Low Voice</i>50
YOUNG, ELIZA M., Now Is Come Salvation and Strength, <i>Med. Voice</i>75