

Sopran

Hymnus "Vexilla regis."

201576

Ant. Bruchner

Primo longissimo.

1) Vexilla Regis pro...
2) Quae vulnere...
3) Ample...

cresc. *semp.* *f*
de-unt, fulget
ce-ae mu-
cinis Da-
di-mi-nu-erit do-
1) crucis, fulget crucis my-steri-um
2) crone di-ro-ri-minum
3) vid-fi-de-li-car-mi-ne

p *cresc.*
1) qua vi-ta mor-tem per-sulit, et mor-
2) ut nos la-varet sor-di-bus, mana-
3) di-cen-do na-ti-o-ni-bus: regna-

scendo f *diminu-endo p*
1) -se vi-tam, vitam, vitam pro-sulit.
2) -vit un-da, unda, et san-guine.
3) vit-a li-gno, ligno De-us.

Stiftsarchiv
St. Florian

(Soprano).

(Linzioni lutheran Amosiani)

p *cre...*

6) *o* cruce a - - - - - vespes u - - - - -
7) Te fons sa - lu - - - - - tis Tri - - - - -

f *di...*

6) - - - ni - ca hoc passi - o - - - nis tem -
7) - - - ni - tas col - laudes o - - - - - mnis spi -

minuendo *p* *p* *7*

1) - po - re, pi - - - is ad - au - ge gra -
2) - ri - tus, qui - - - bus cruceis victo -

f *7*

1) - - - si - am, re - is - - que de - - le dele
2) - - - ri - am lar - gi - ris, lar - gi - - ris, adde,

p 1 2 3

1) dele cri - - - - - mi - na,
2) adde prae - - - - - mi - um,

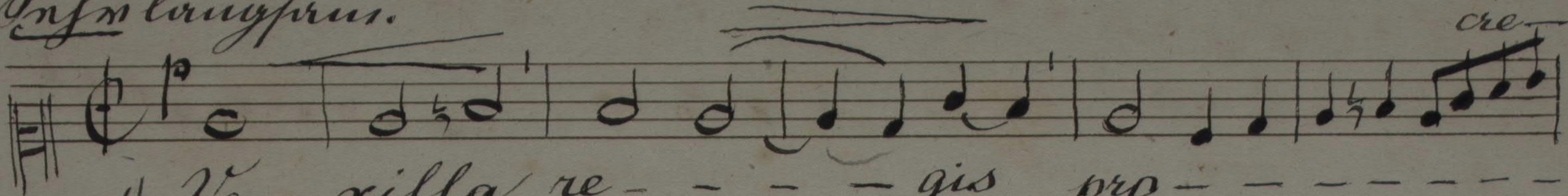
Hymnus: "Vexilla Regis"
für den St. Gernhardstift
und die Kirche des St. Antonius.

Soprano.

And. Bruckner

20576

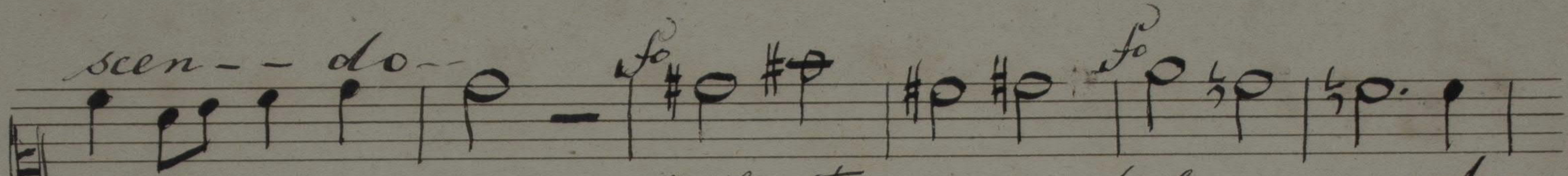
Inferno laus prus.



1) Vexilla re - - - - - gis pro - - - - -

2) Quae vulne - ra - - - - - la lan - - - - -

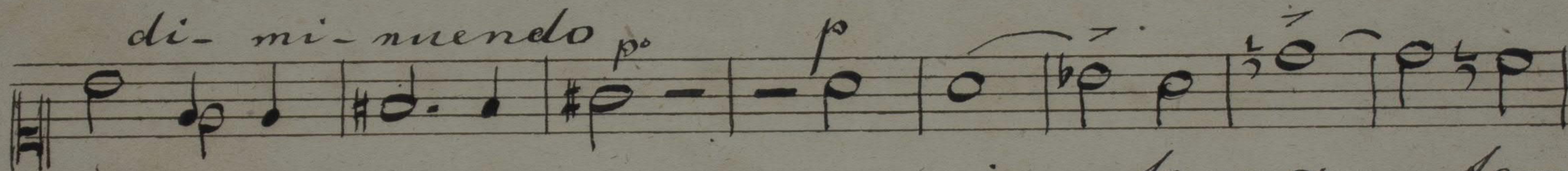
3) Im - ple - - - - - ta sunt, quae con - - - - -



1) - - - de - unt, fulget crucis, ful - - - - - get

2) - - - ce - ae, mu - crone di - - - - - ro

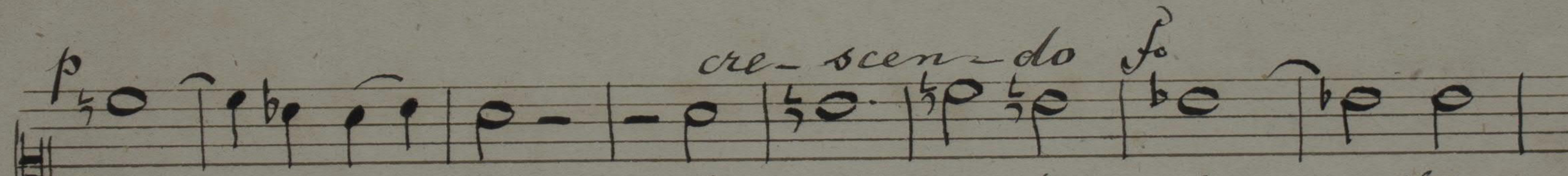
3) - - - ei - nit Da - - - vid fi - de - - - - li



1) crucis my - ste - ri - um, qua vi - - - - - sa mor - tem

2) cri - - - - - minum, ut nos - lava - - - - - ret

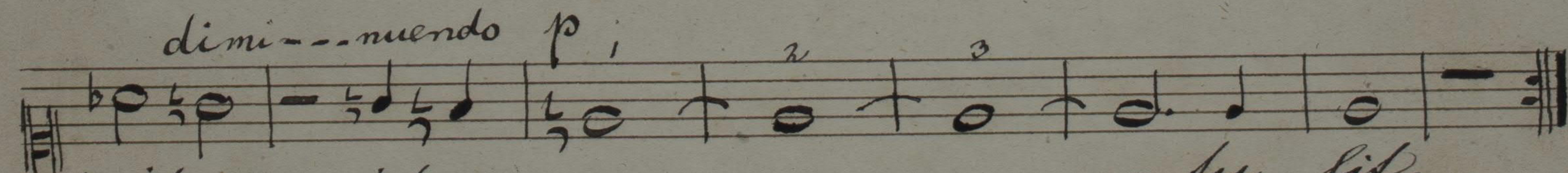
3) car - - - - - mine, di - cen - do na - - - - - ti.



1) per - - - - - sul, et mar - - - - - le vi - - - - - tam,

2) sor - - - - - di - bus, ma - na - vit un - - - - - da,

3) o - - - - - ni - bus: re - gnabit a li - - - - - gno,



1) vitam, vitam pro - - - - - sul.

2) unda, et san - - - - - qui - ne.

3) ligno, ligno De - - - - - us.

(Soprano)

Stiftsarchiv
St. Florian

(Ein zwoi lutzeln Knazfau).

p *cre---*

6) O cruce a - - - - ve spes u - - - -
7. Te fons sa - lu - - - - sis Tri - - - -

scen - do *f*

1) - - - ni - ca hoc passi - o - - - - nis
2) - - - ni - tas col - laudet o - - - - - mnis

dimi - nuendo p *p*

1) tem - - - po - re, pi - - - is ad - au -
2) spi - - - ri - tus, qui - - - - bus cru -

p

1) - ge gra - - - si - am, re - is - - que
2) cis vi - ctio - - - ri - am lar - gi - ris, lar -

f *p* 1 2 3

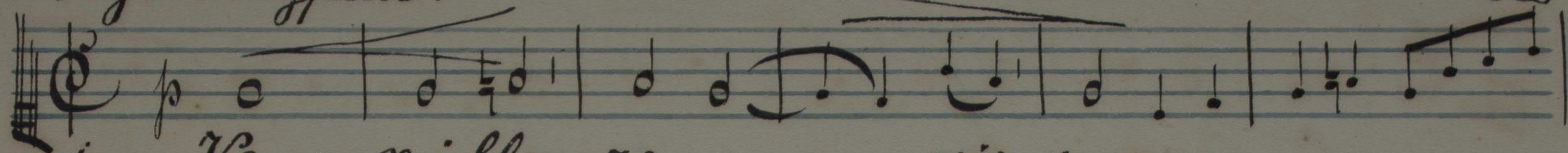
1) de - le, dele, dele cri - - - - - mina.
2) gi - - ris, adde, adde prae - - - - mi - um!

Hymnus: "Vexilla Regis" Sopran.

201576-3

Ant. Brückner.

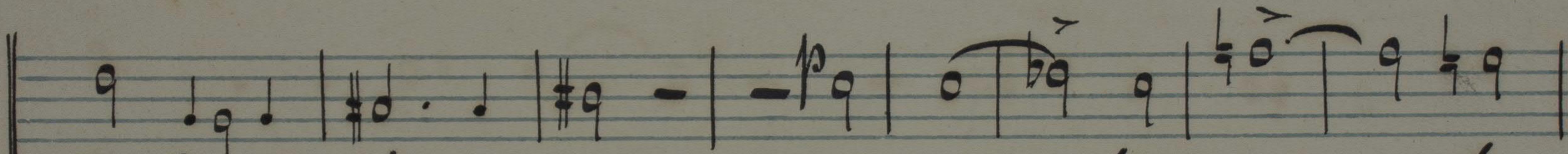
Infer luyforn.



1. Ve - xilla re - - - - - gis pro - - - - -
2. Quae vulne - ra - - - - - ta lan - - - - -
3. Im - ple - - - - - ta sunt, quae con - - - - -

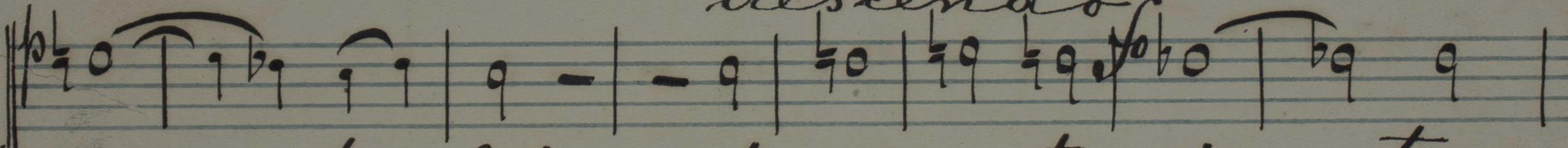


1. - - - de - unt, fulget crucis, ful - - - get
2. - - - - - eae, mu - - - - - crone, di - - - - - ro
3. - - - - - cinit, Da - - - - - vid fi - de - - - - - li



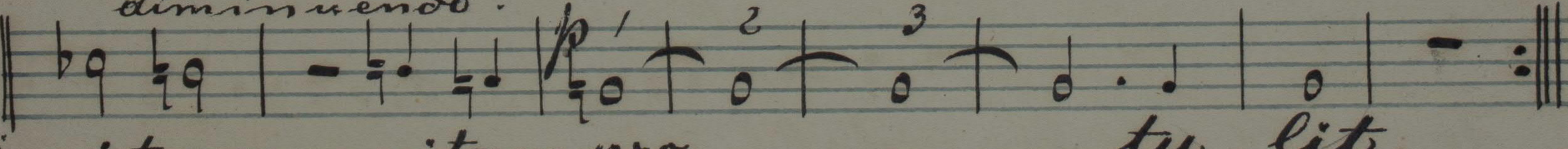
1. Crucis myste - rium, qua vi - ta mor - tem
2. Cri - - - - - minum, ut nos - lava - - - - - ret
3. Car - - - - - mine, di - cen - do na - - - - - ti -

Crescendo



1. per - - - tu - lit, et mor - - - te vi - - - tam,
2. sor - - - di - bus, man - - - vit un - - - da,
3. o - - - ni - bus; regnavit a - li - - - gno,

diminuendo.



1. vitam, vitam pro - - - - - tu - lit.
2. unda, et - san - - - - - qui - ne.
3. ligno, ligno De - - - - - us.

B.
/

(Soprano.)

Stiftsarchiv
St. Florian

(Ein zogeni lutzten Krugform.)

6. O cruce - a - - - - vesperu - - - -
7. Te fons salu - - - - tis Tri - - - -

1. - - - ni - ca hoc - passi - o - - - - nis
2. - - - nitas col - - laudet o - - - - mnis

1. tem - - - po - re, pi - - - is ad au -
2. Spi - - - ri - tus, qui - - - - bus Cru -

1. - ge gra - - - ti - am, re - is - - - que
2. Cis vi - cto - - - ri - am, lar - gi - ris, lar -

1. de - - - le, de - le, de le Cri - - - - mina.
2. gi - - - ris, adde, adde prae - - - - mium.

Hymnus:

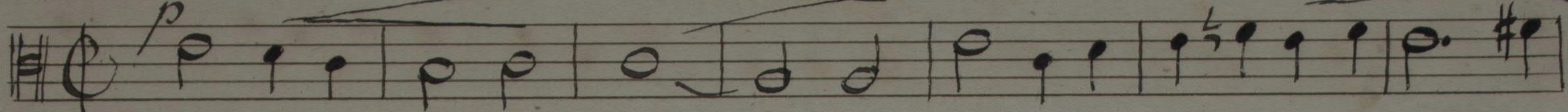
"Vexilla Regis,"

All.

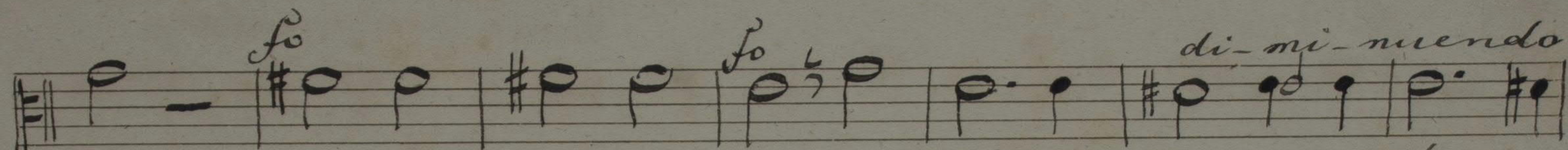
Ant. Bruckner

201576

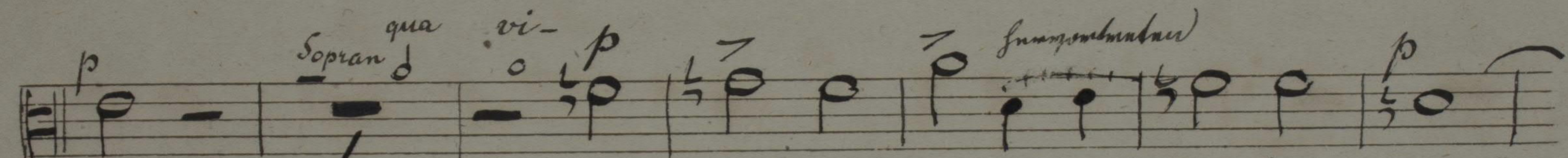
Infm longum.



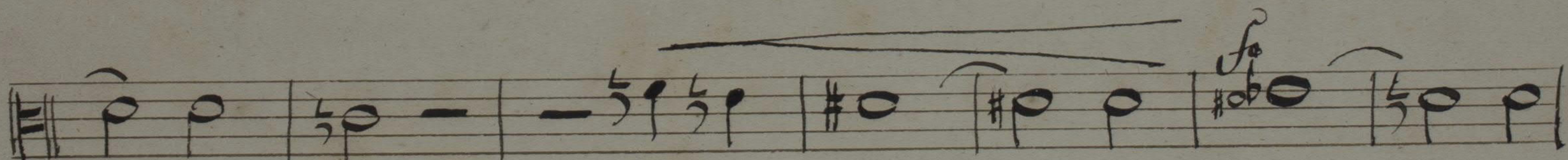
1) Vexilla re-gis pro-de-
 2) Quae vulne-ra lan-ce-
 3) Im-ple-ta sunt quae con-ci-



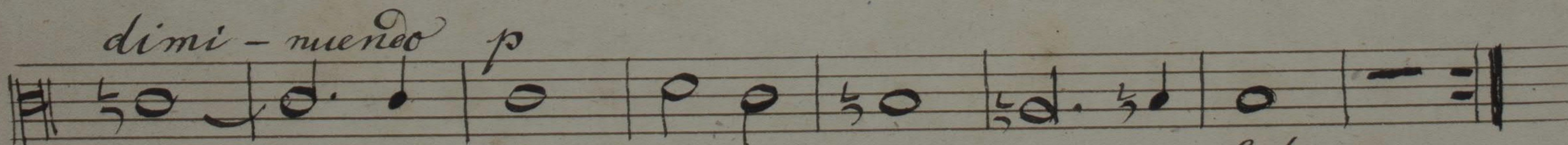
1) und, fulget crucis, ful- get crucis myste-ri-
 2) ae, mu- crone di- ro cri- mi-
 3) nit Da- vid fi- de- li car- mi-



1) um, qua vi-
 2) num, ut nos la- va- ret sor-
 3) ne, di- cendo na- ti- o-



1) - tu- lit, et mor- te vi- sam
 2) - di- bus, ma- na- vid un- da,
 3) - ni- bus: Re- gna- vit a- li- gno,



1) vi- sam pro- su- lit,
 2) un- da et san- guine,
 3) li- gno De- us.

(Alto)

(Ein zuni lutzluw Amuzfnu).

1) *crux a - - ve'spes u - - - - ni-*
2) *lonssa-lu - - - - sis Tri - - - ni-*

1) *ca, hoc passi-o - - - nis tem- - - pore,*
2) *tas col laudet o - - - mnis spi - - - ritus,*

1) *pi - - is ad au - - - ge gra - - li-*
2) *qui - - - bus cu - - cis victo - - ri-*

1) *am, re - is - que de - - le de -*
2) *am lar-gi - ris, lar-gi - - ris ad -*

1) *le eri - - - - mi-na.*
2) *de prae - - - - mi-un.*

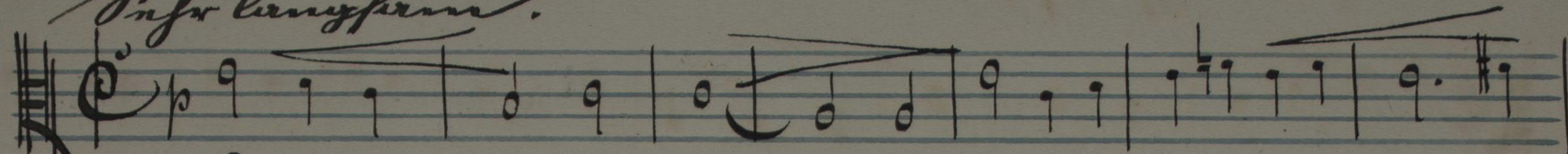
Hymnus: "Vexilla Regis" Alt.

201576

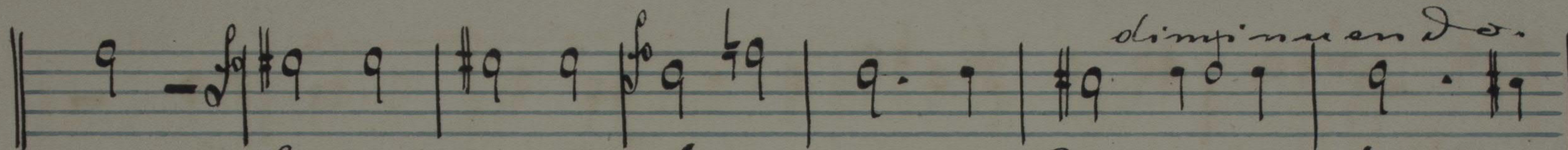
5

Ant. Brückner.

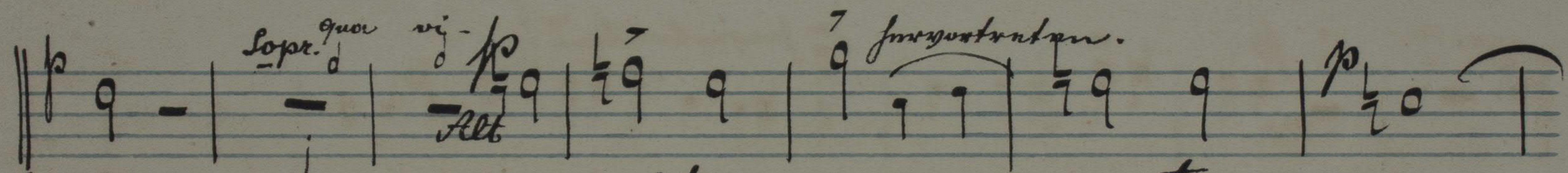
Subr. luyferum.



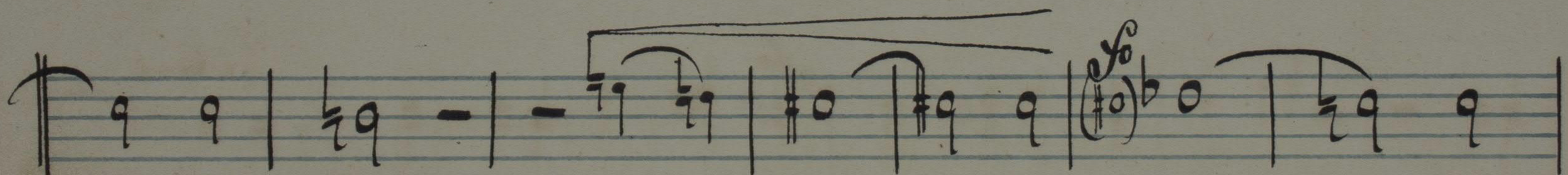
1. Vē - - - xilla re - - - gis pro - - - - de -
2. Quae - vulne - ra - - - ta lan - - - - ce -
3. Im - - ple - - ta sunt, quae con - - - - ci -



1. unt, fulget crucis, ful - - - get crucis myste - ri -
2. ae, mu - crone oli - - - - ro cri - - - - mi -
3. nit, Da - vid fi - de - - - - li cor - - - - mi -

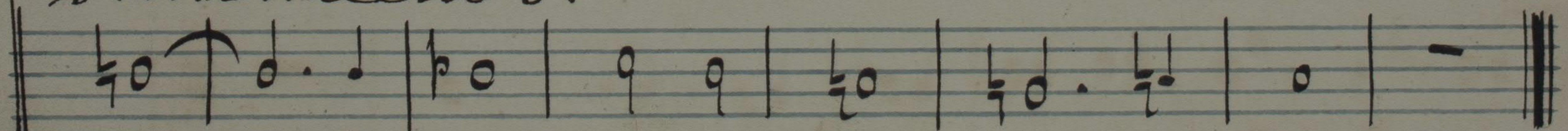


1. um, qua vita mor - - - tem per -
2. num, ut nos la va - - - - ret sor - -
3. ne, di - cendo na - - - - ti - o - -



1. - tu - lit, et - mor - te vi - - - tam
2. - di - bus, ma - na - vit un - - - da,
3. - ni - bus: Re - gna - vita li - - - gno,

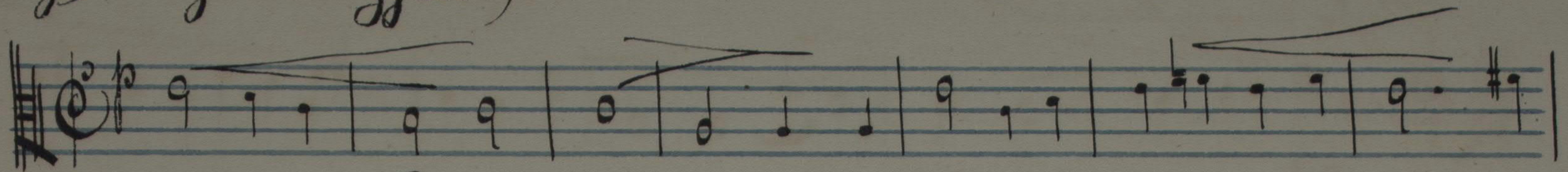
diminuendo.



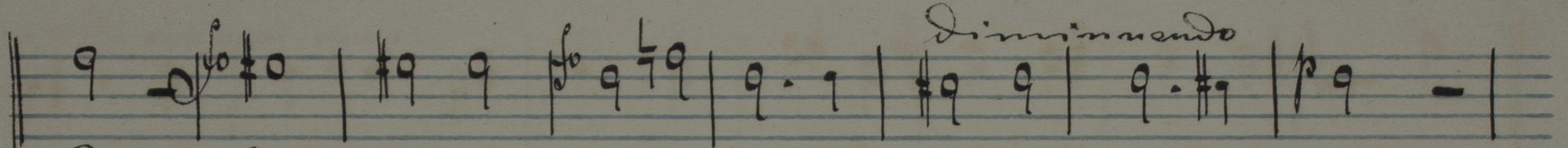
1. vi - - tam pro - - - - tulit.
2. un - da et san - - - - qui - ne.
3. li - - gno De - - - - us.

V.S.

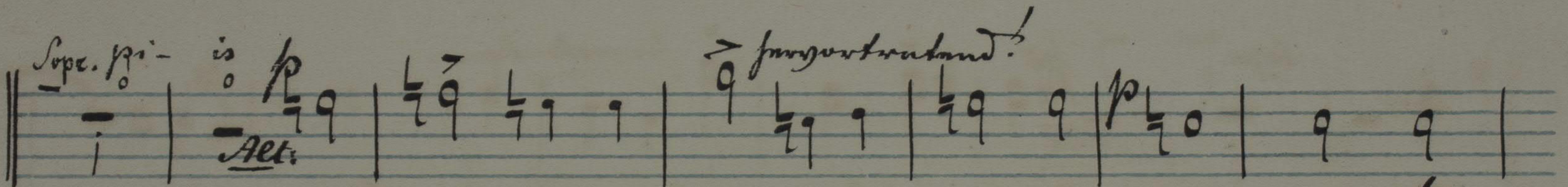
(Alto.)
(wie gewöhnlich Krugger.)



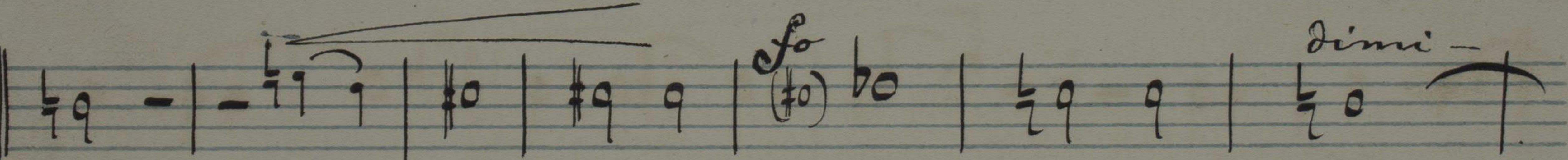
6. o - - - cruce a - - - ve spes u - - - - - ni -
7. Te - - - fons sa - lu - - - tis Tri - - - - - ni -



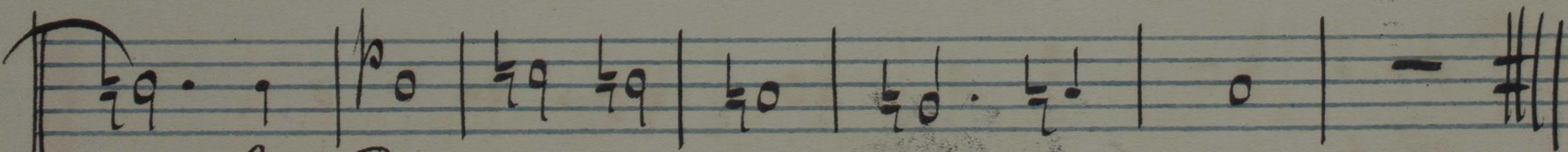
1. ca, hoc passi - o - - - nis tem - - - po - re,
2. tas col - laudet o - - - mnis spi - - - ritus,



1. pi - - is ad - au - - - ge gra - ti -
2. qui - - - bus cru - - - cis victo - - - ri -



1. am, re - is - que de - - - le, de -
2. am lar - gi - ris, lar - gi - - - ris ad -



1. - - le Tri - - - - - mina.
2. - de praes - - - - - miam.

Hymnus: "Vexilla Regis".

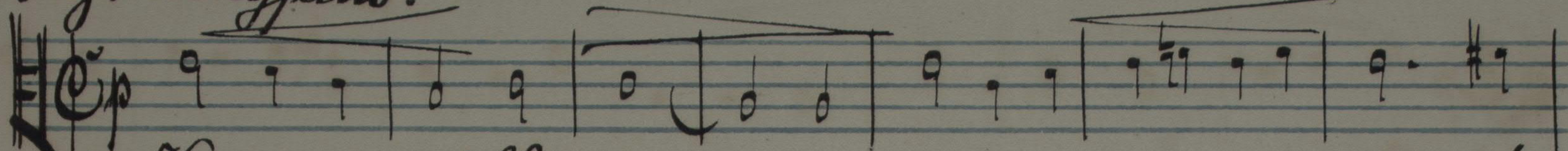
201576

6

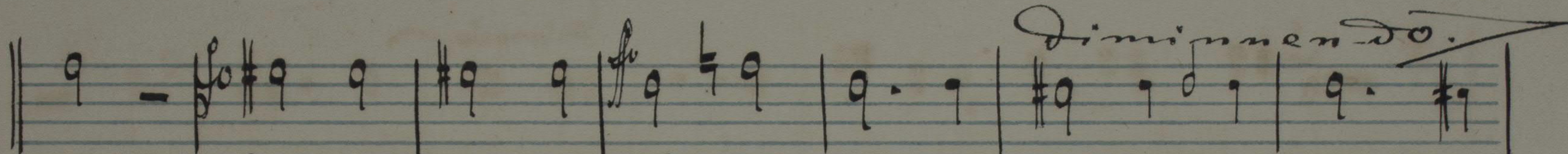
Alt.

Ant. Brückner.

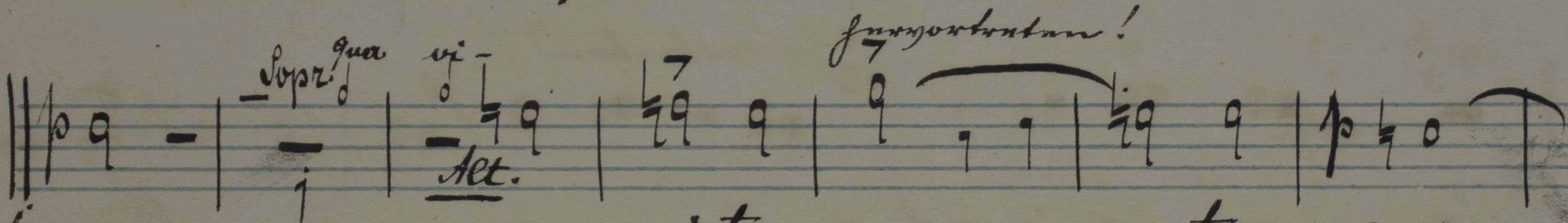
Infr. longum.



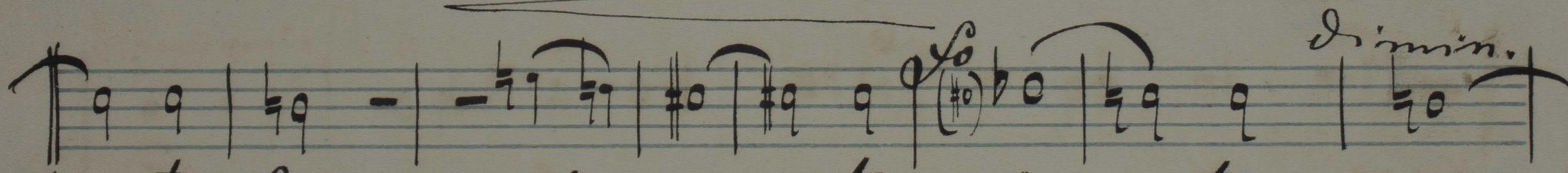
1. Vexilla regis pro - - - - - de -
2. Quae - - vulnera - - ta lan - - - - - ce -
3. Im - - - ple - - ta sunt, quae con - - - - - ci -



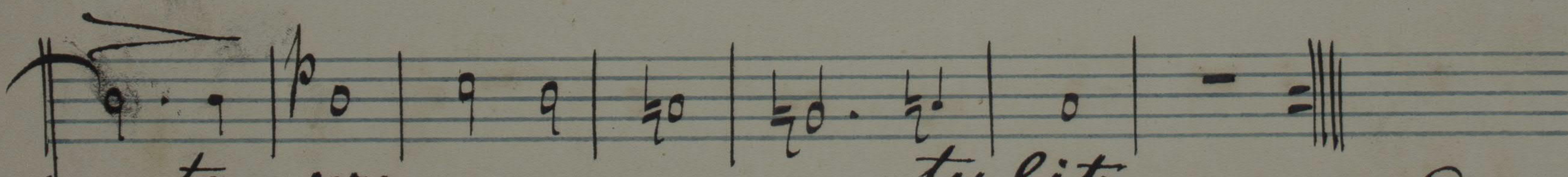
1. unt, fulget crucis, ful - - get crucis myste - ri -
2. ae, mu - - crone di - - - - - ro cri - - - - - mi -
3. nit, Da - vid fi - de - - - - - li car - - - - - mi -



1. um, qua vita mor - - - - - tem per -
2. num, ut nos la - va - - - - - ret sor -
3. ne, di - cendo na - - - - - ti - o -



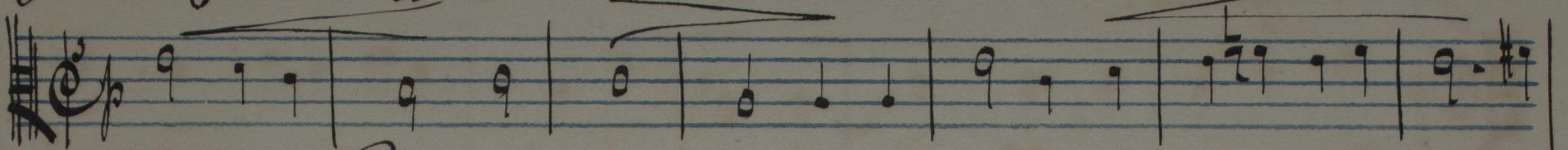
1 - tu - lit, et - mor - te vi - tam, vi -
2 - di - bus, ma - na - vit un - - - - - da, un -
3 - ni - bus: re - gna - vit a li - - - - - gno, li -



1. - tam pro - - - - - tulit.
2. da et san - - - - - quine.
3. - gno De - - - - - us.

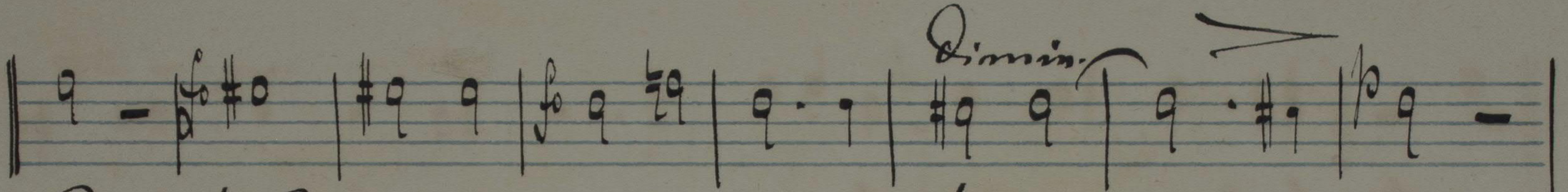
(Sing mit dem Chor).

(Alto.)



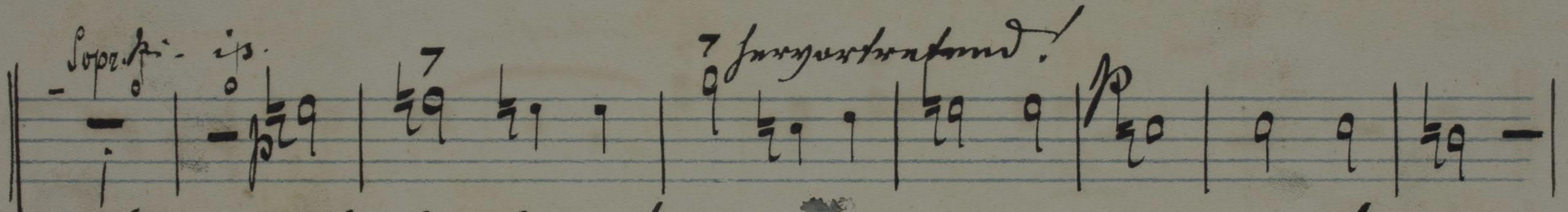
6. O - - - cruce - a - - - vespe u - - - - ni -

7. Te - - - fons salu - - - - tis Tri - - - - ni -



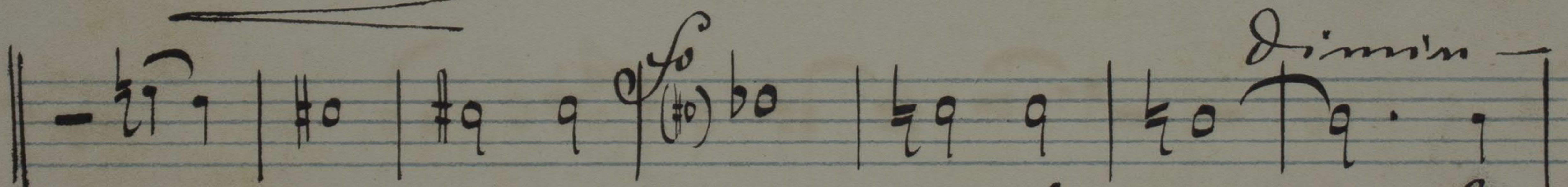
6. cae, hoc passi - o - - - nis tern - - - po - re,

7. tas, col - laudet o - - - - mnis spi - - ri - tus,



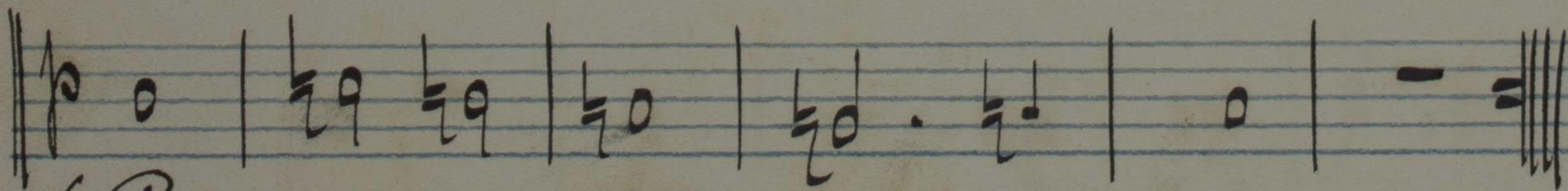
6. - pi - is is ad - au - - - ge gra - ti - am,

7. - qui - - - bus pu - - cis vic - to - - ri am,



6. re - is - - - quae de - - - le, de - - - le

7. lar - gi - ris, lar - gi - - - ris ad - - - de



6. Cri - - - - - mina.

7. pas - - - - - mi - um.

Hymnus: Vexilla regis,
cum Organum in
Organo.

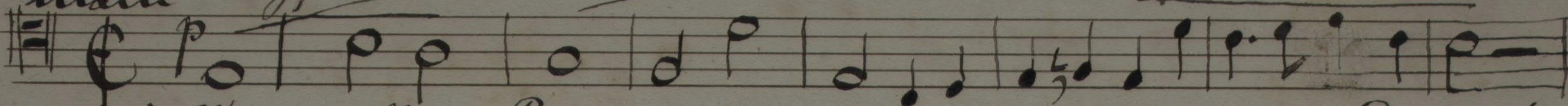
201576

7

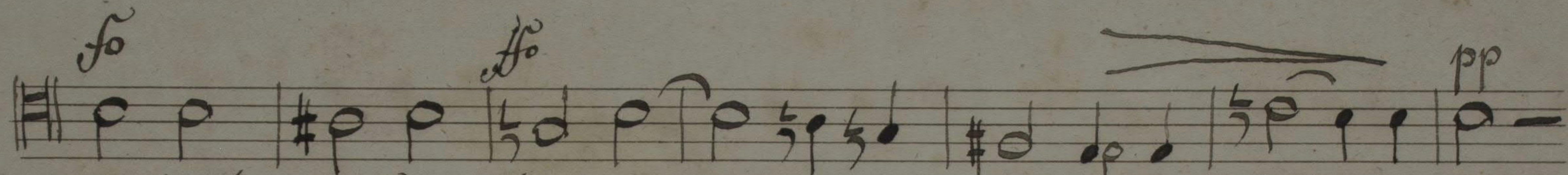
Tenore.

A. Bruckner.

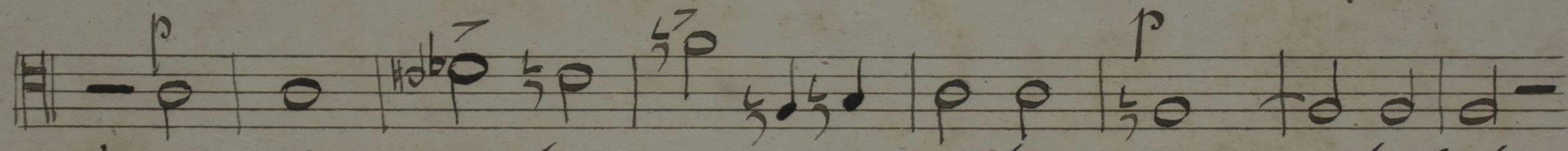
Psalm LXXXVIII.



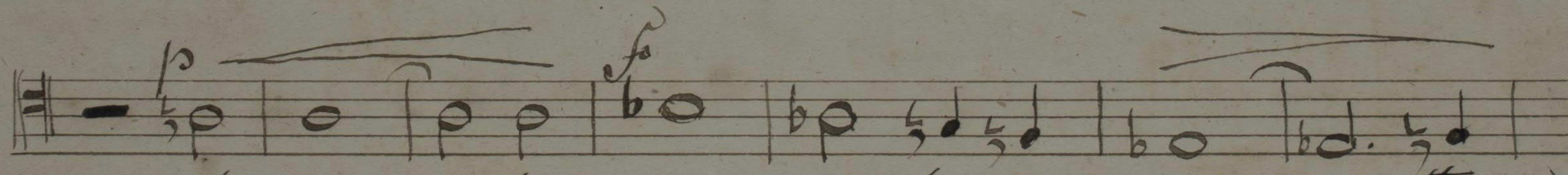
1) Vexilla Regis protendunt
2) Quae vulnerata lanceae
3) Impleta sunt, quae circumcinct



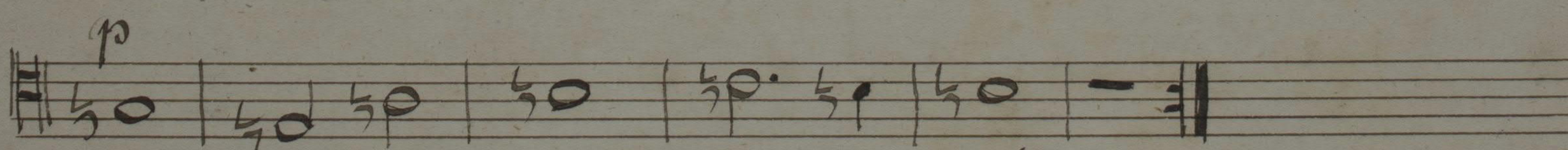
1) fulget crucis, fulget crucis mysterium,
2) mactatione doro criminum,
3) Davit fideliter carmine



1) qua visata mors semper tulit,
2) ut nos lavaret sor-dibus,
3) dicendo dona-tionibus:



1) et morte vitam, vitam
2) manavit unda, unda et
3) regnavit a ligno, ligno
vit



1) protulit.
2) sanguine.
3) De-

(Tenore)

(Ein biiden luffen Kruffen)

p *cresc.*

6) O crux a- - - - - ve, spes u- - - - - nica
7) Te fons sa- lu- - - - - tis, Tri- - - - - nitas,

f *pp*

6) hoc passi- o- - - - - nis sem- - - - - po- re;
7) col- laudet o- - - - - mnis spi- - - - - ri- tus:

pp *p*

6) pi- - - - - is ad- au- - - - - ge gra- - - - - ti-
7) qui- - - - - bus cru- - - - - cis vi- do- - - - - ri-

f *diminuendo*

6) am re- - - - - que de- - - - - le, de- - - - - le
7) am lar- gi- - - - - ris, lar- gi- - - - - ris, ad- - - - - de

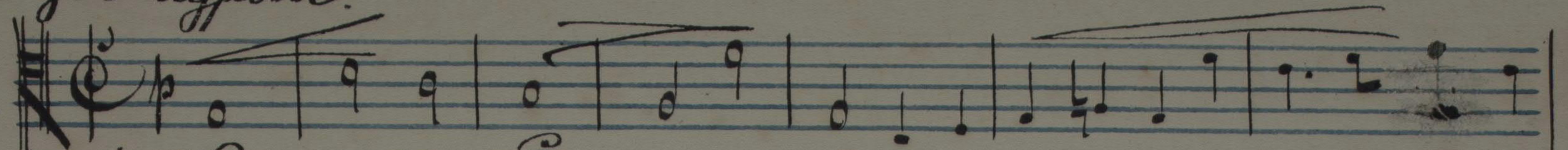
p

6) cri- - - - - mi- na.
7) prae- - - - - mi- um.

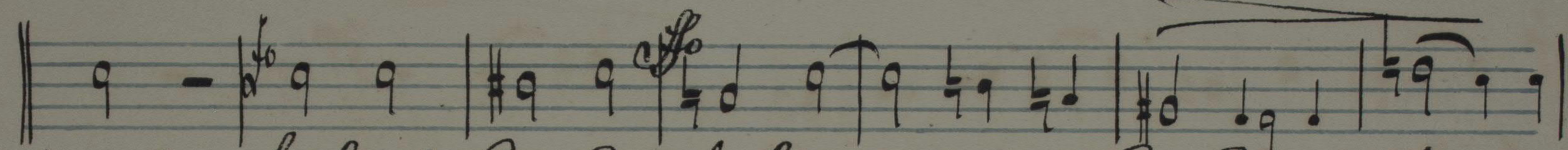
Hymnus: "Vexilla regis" Tenore.

Ant. Bruckner.

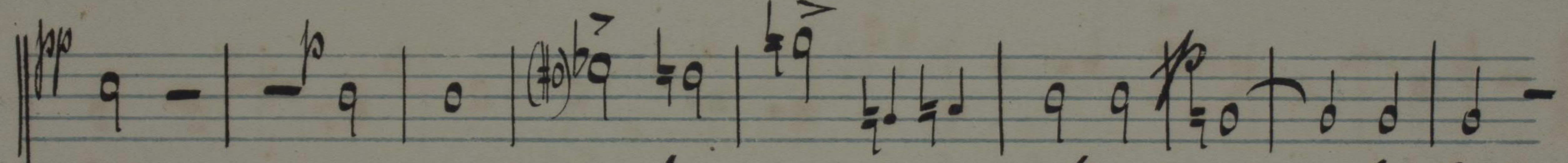
Capitulum



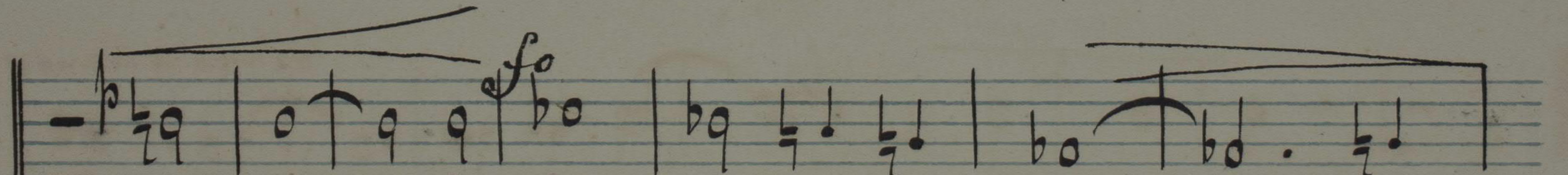
1. Vexilla Re - - - - - gis pro - - - - - de -
 2. Quae vulne - ra - - - - - ta lan - - - - - ce -
 3. Im - ple - - - - - ta sunt, quae con - - - - - ci -



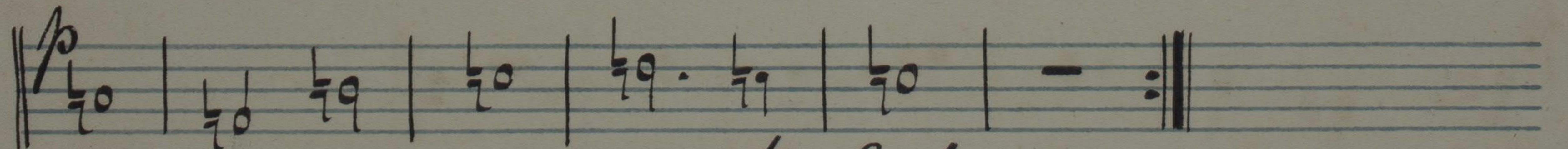
1. unt fulget crucis, ful - - - - - get crucis myste - ri -
 2. ae, mu - - - - - trone di - - - - - no cri - - - - - mi -
 3. nit, Da - - - - - vid fi - de - - - - - li par - - - - - mi -



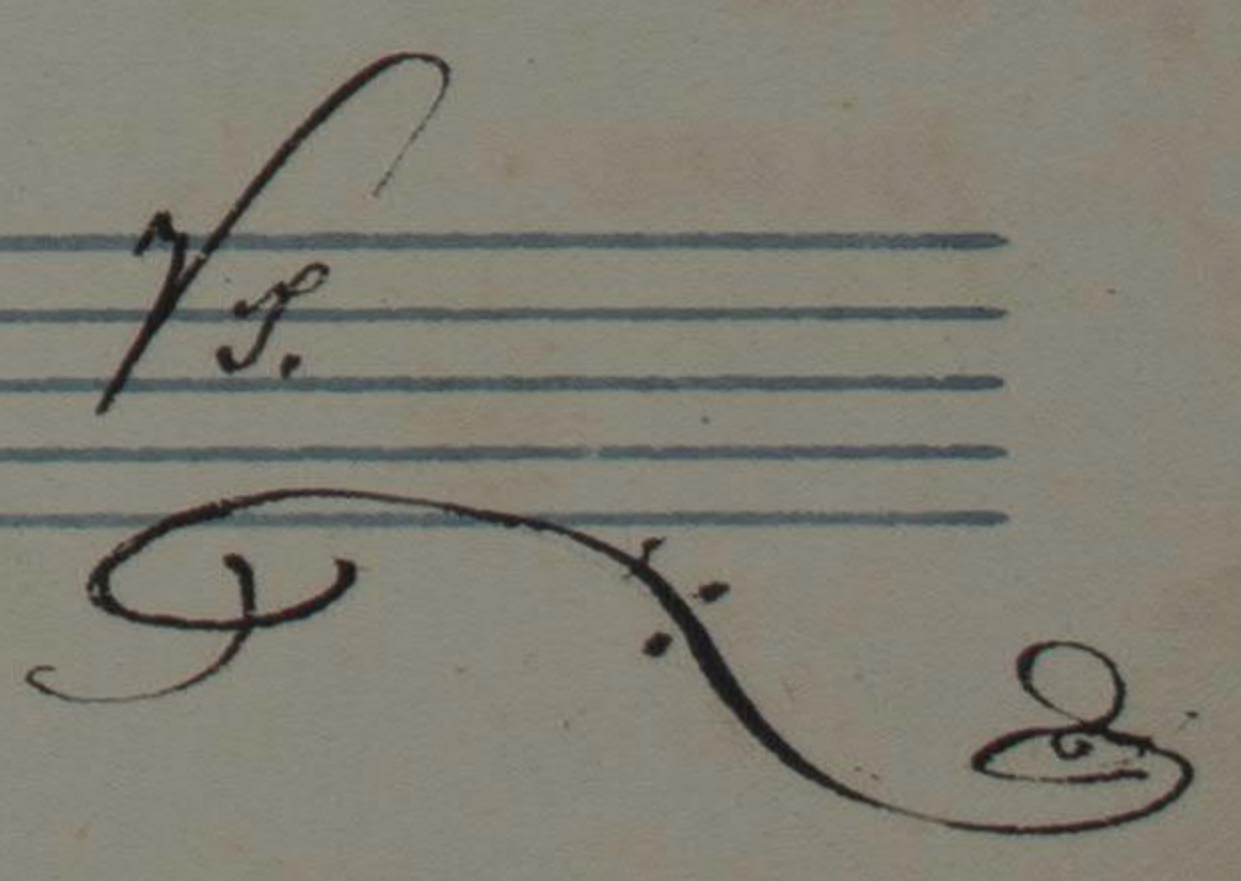
1. um, qua vi - - - - - ta mor - - - - - tem per - tulit,
 2. num, ut nos - - - - - la - va - - - - - ret sor - - - - - dibus,
 3. ne, di - - - - - cen - - - - - do na - - - - - ti - o - - - - - nibus:



1. et mor - te vi - - - - - tam, vi - - - - - tam
 2. mana - vit un - - - - - da - , un - - - - - cla et
 3. re - gnavit a li - - - - - gno - , li - - - - - gno

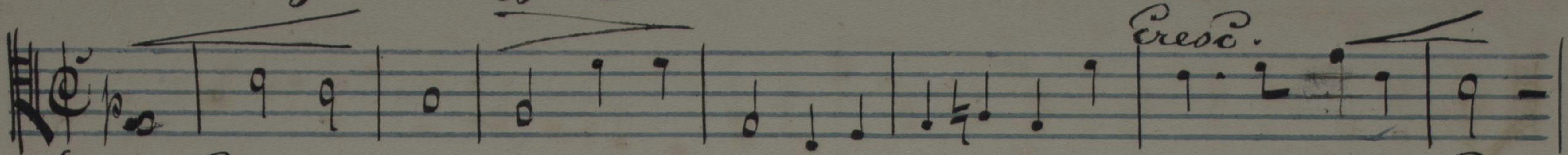


1. pro - - - - - tulit.
 2. san - - - - - qui - ne.
 3. De - - - - - us.

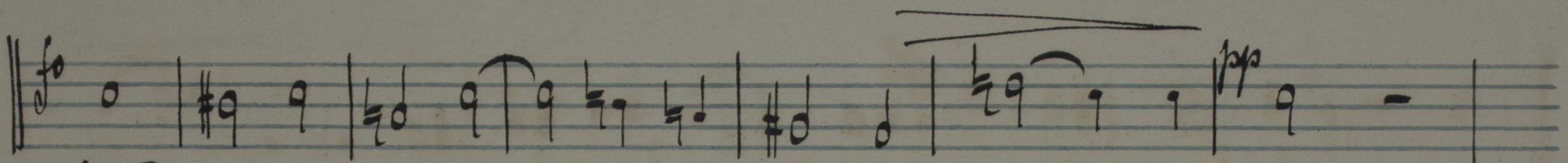


(Tenor)

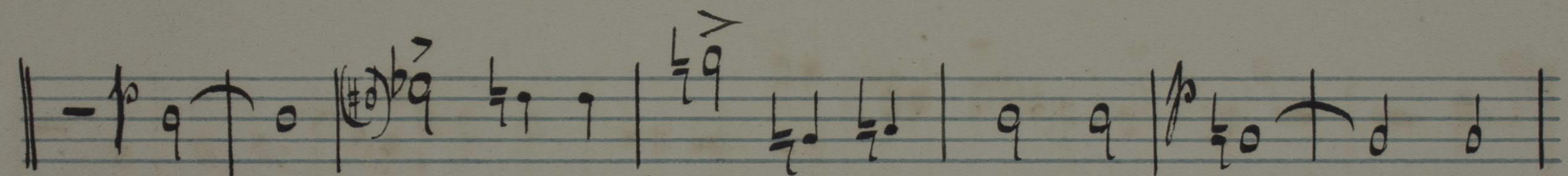
(Die beiden letzten Strophen)



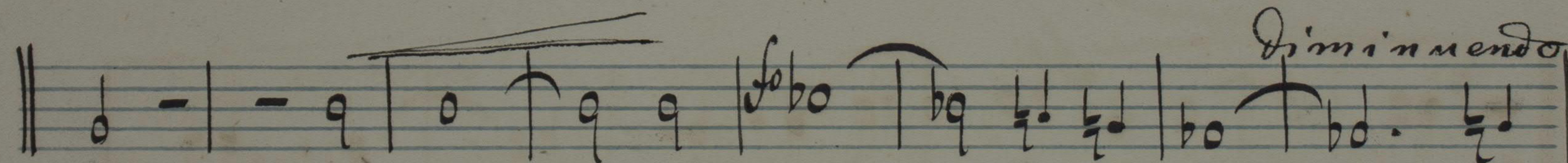
b.) O - cruce - a - - - vespe - u - - - - - nica
f.) Te fons sa - - - - tis Tri - - - - - nitas,



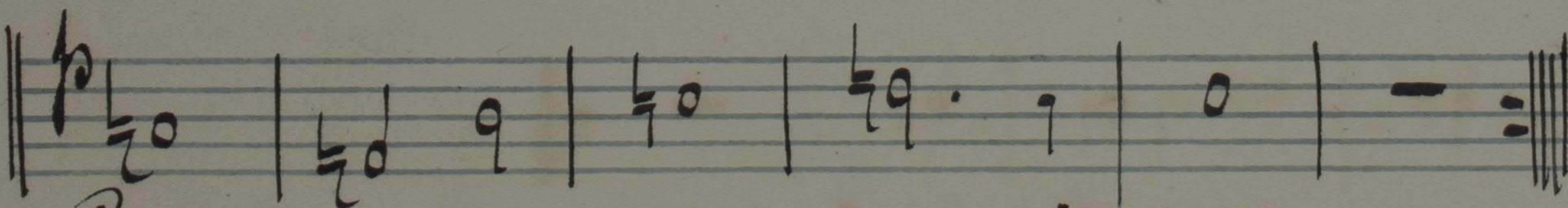
6. hoc passi - o - - - - nis tem - - - - po - re;
7. Sol. laudet o - - - - mnis spi - - - - ri - tus:



6. pi - - - - is ad au - - - - ge gra - - ti -
7. qui - - - - bus cru - - - - cis vi - cto - - ri -



6. am re - is - que de - - le - , de - - le -
7. am largi - ris, largi - - ris, ad - - de



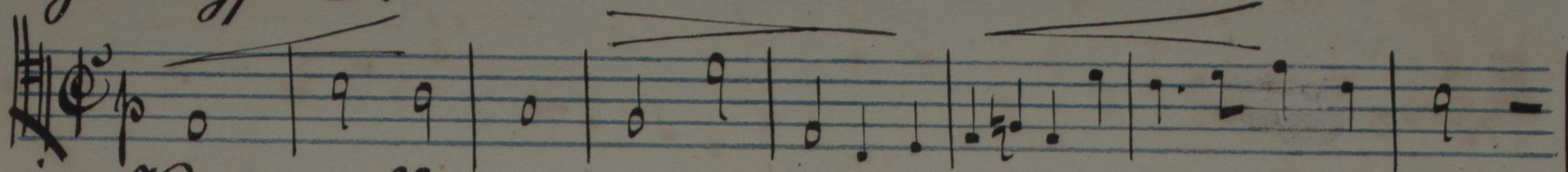
6. Cri - - - - mi - na.
7. prae - - - - mium.

Hymnus: "Vexilla regis" Tenor.

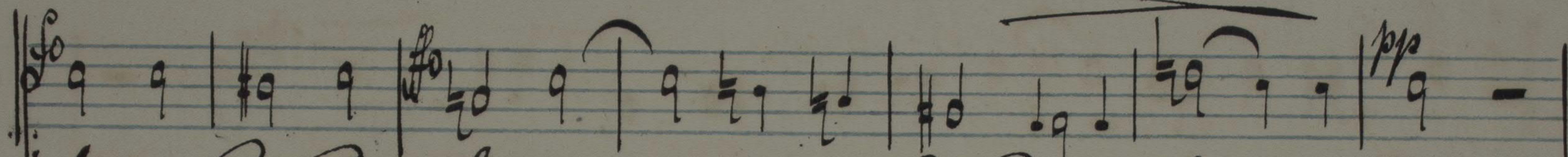
20157b

Ant. Bruckner.

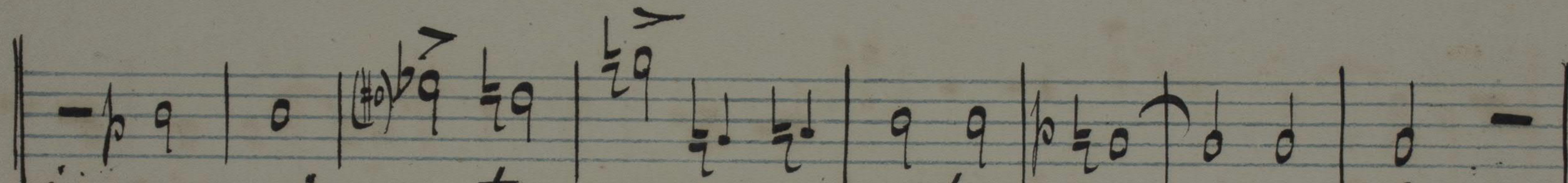
Andr langsam.



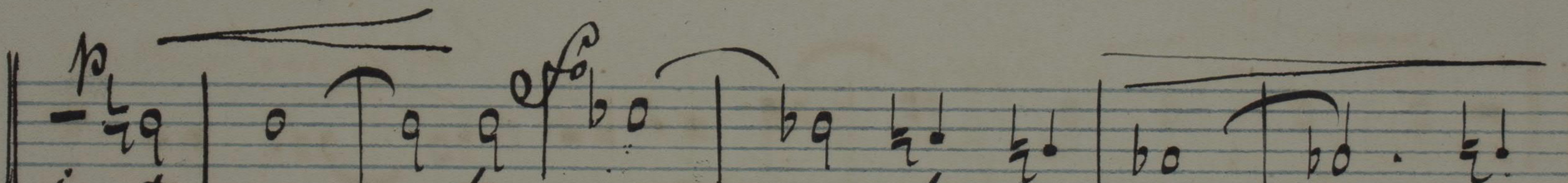
1. Vexilla regis pro - - - - - deunt,
2. Quae vulnera - - - - - teae -
3. Im - ple - ta sunt, quae con - - - - - cinit,



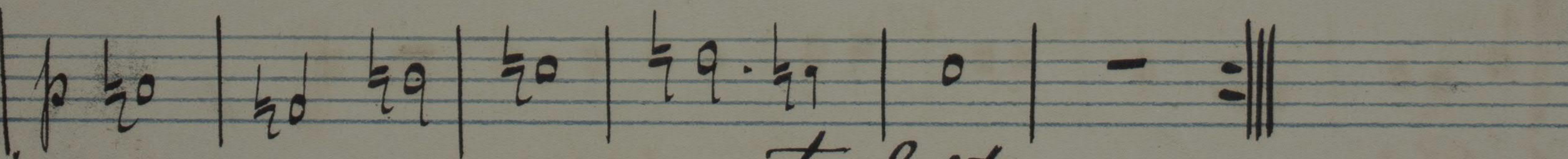
1. fulget crucis, ful - - - - - get crucis myste - rium,
2. mu - crone di - - - - - ro cri - - - - - minum,
3. Da - vid fi - de - - - - - li pav - - - - - mine,



1. qua vi - ta mor - - - - - tem per - tu - lit
2. ut nos - la - va - - - - - ret sor - oli - bus,
3. di - cen - do na - - - - - ti - o - - - - - ni - bus,



1. et mor - te vi - tam, vi - tam
2. mana - vit un - - - - - da, un - da et
3. re - gna - vit a li - - - - - gno, li - - - - - gno



1. pro - - - - - tulit.
2. san - - - - - qui - ne.
3. De - - - - - us. *Ad.*

(Tenor).
(in baidm lalydm Kroegm.)

Presc.

6. O cruce - a - vesperu - - - - - nica,
7. Te fons sa - - - - - tis Tri - - - - - nites,

6. hoc passi-o - - - - - nis tem - - - - - po-re,
7. col-laudet o - - - - - mnis spi - - - - - ritus,

6. pi - - - - - is a dau - - - - - ge gra - ti - am
7. qui - - - - - buscu - - - - - eis vic - to - - - - - riam

Dimin.

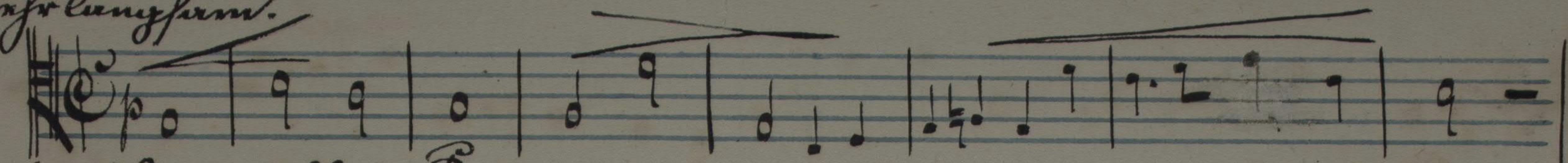
6. re - is - - - - - que de - - - - - le - - - - - de - - - - - le
7. largi - ris, largi - - - - - ris - ad - - - - - de

6. Eri - - - - - mina,
7. proce - - - - - mi - um.

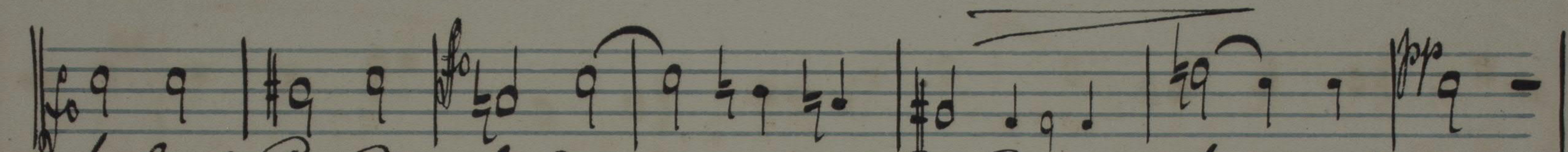
Hymnus: „Vexilla regis“ Tenor.

201576
Ant. Brückner

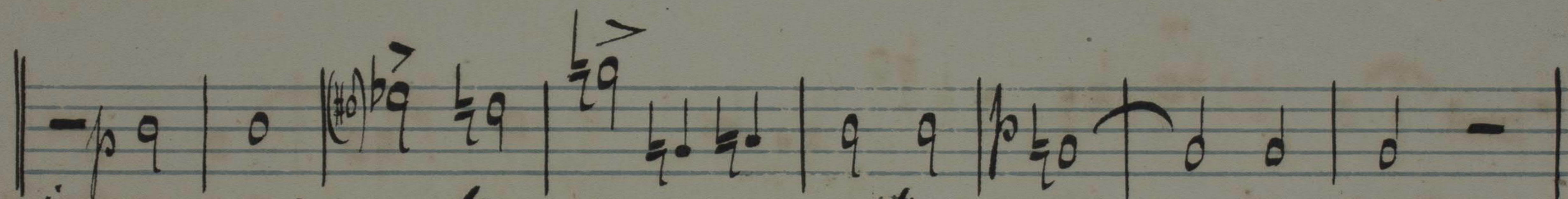
Infralungform.



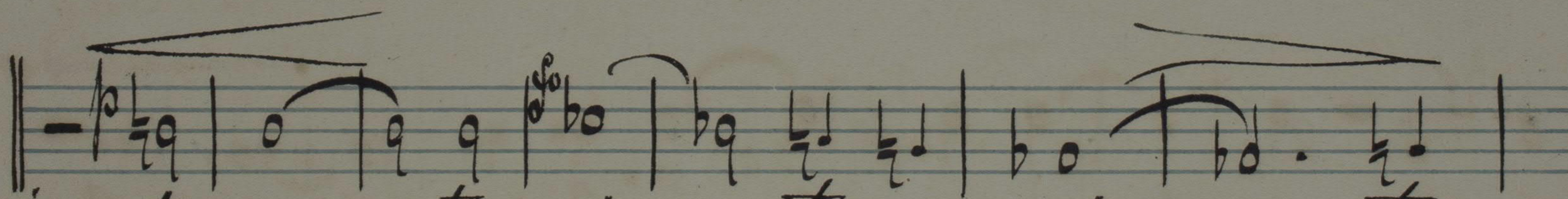
1. Vexilla Re - gis pro - - - - de - unt,
2. Quae vulne - ra - ta lan - - - - ce - ae,
3. Imple - ta sunt, quae con - - - - cinit,



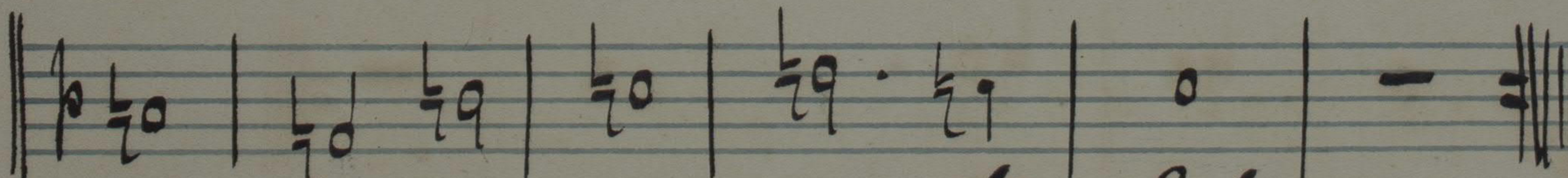
1. fulget crucis, ful - - - - get crucis my - ste - rium,
2. mu - crone di - - - - ro tri - - - - minum,
3. Da - vid fi - de - - - - li sac - - - - mine,



1. qua vi - ta mor - - - - tem per - tulit,
2. ut nos - la - va - - - - ret sor - oli - bus,
3. di - cen - do na - - - - ti - o - - - - ni - bus:



1. et mor - te vi - - - - tam, vi - - - - tam
2. mana - vit un - da - , un - da et
3. re - gna - vit a li - - - - gno, li - - - - gno



1. pro - - - - tu - lit.
2. san - - - - quine.
3. De - - - - us.

V.S.

(Tenor.)

(Vino baidan lutzdan Droyfan.)

6. O cruce - a - veppes u - - - - - nica,

7. Te fons sa - - - - - tis Tri - - - - - nitas,

6. hoc passi - o - - - - - nis tem - - - - - po - re,

7. collaudet o - - - - - mnis spi - - - - - ritus:

6. pi - - - - - is a - dau - - - - - ge gra - ti -

7. qui - - - - - bus cru - - - - - cis vic - to - - - - - ri -

6. am re - is - - que de - - le - , de - le

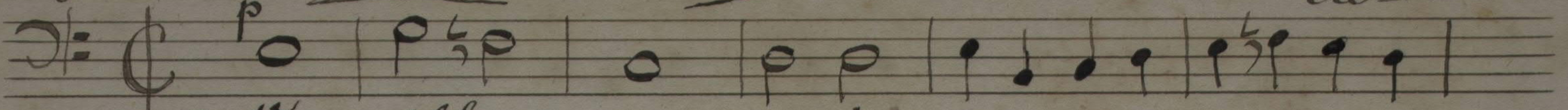
7. am lar - gi - ris, largi - - - - - ris - ad - - - - - de -

6. Tri - - - - - mi - na.

7. prae - - - - - mi - um.

Basso.

Pmf *lungo*

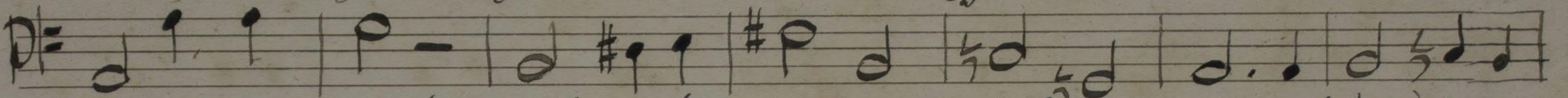


1) Vexilla re- - - - - gis pro- - - - -

2) Quae vulne- ra- - - - - ta lan- - - - -

3) Imple- - - - - ta sunt quae con- - - - -

scen-do *f* *f* *ff* *diminu-*

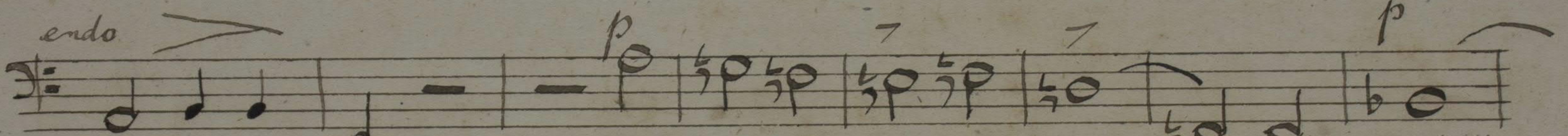


1) - - - de-unt, ful-geat crucis, ful- - - - get crucis my-

2) - - - ce-ae mu- - - - crone di - - - - no cri - - -

3) - - - cinis Da- - - - - via fi- de - - - - li car - - -

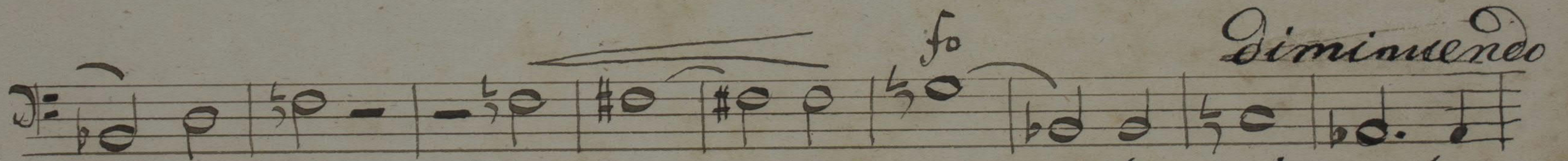
endo



1) ste- - - ri-um, qua vi - - - - sa mor- - - - tem per-

2) - - - mi-num, ut nos - - - - la-va - - - - ret sor-

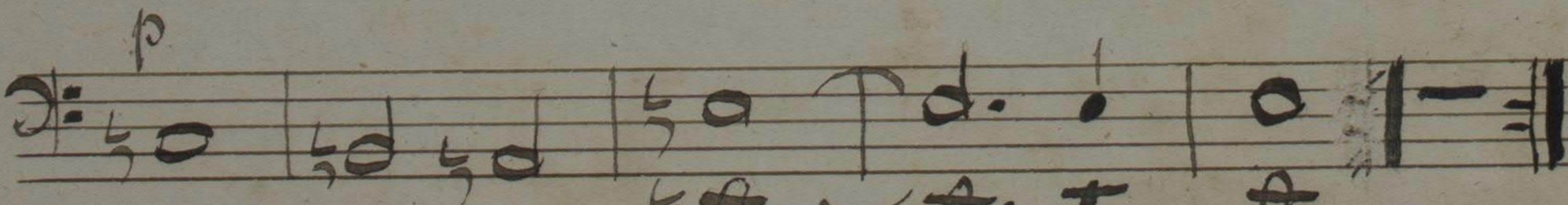
3) - - - mine, di- - - - cen- - - - do na - - - - ti- o - - -



1) - - - sulis, et mor- te vi - - - - tam, vi - - - - tam

2) - - - di-bus, ma-na - - - - vit un- - - - da, un-da et

3) - - - nibus: re-gnavit a li- - - - gno, li- - - - gno



1) pro- - - - - tu- lis.

2) san- - - - - qui- ne.

3) De- - - - - us.

(Basso)

(Ein zioni luffen Amuffen)

6) O crux a - - - vespes u - - - - - nica,
7) Te fons sa - lu - - - tis, Tri - - - - - nitas,

6) hoc passi - - o - - - nis sem - - - - - pore!
7) col - - - laudes o - - - - - mnis spi - - - - - ritus!

6) Si - - - is ad au - - - ge gra - - - si - am
7) Qui - - - - - bus cru - - - cis victo - - - ri - am

6) re - is - - que De - - - le, de - - - le
7) largi - ris, lar - gi - - - ris, ad - - - de

1) cri - - - - - mina.
2) prae - - - - - mi - um.

Infralungfame *Crescendo*

1. Vexilla re - gis pro - - - - - de - unt,
 2. Quae vulne - ra - ta lan - - - - - ce - ae,
 3. Im - ple - - - - - ta sunt, quae con - - - - - cinit,

ff *Diminuendo*

1. fulget - crucis, ful - - - - - get crucis myste - - - - - ri - um,
 2. mu - - - - - prone di - - - - - ro vi - - - - - minum,
 3. Da - - - - - vid fi - de - - - - - li car - - - - - mine,

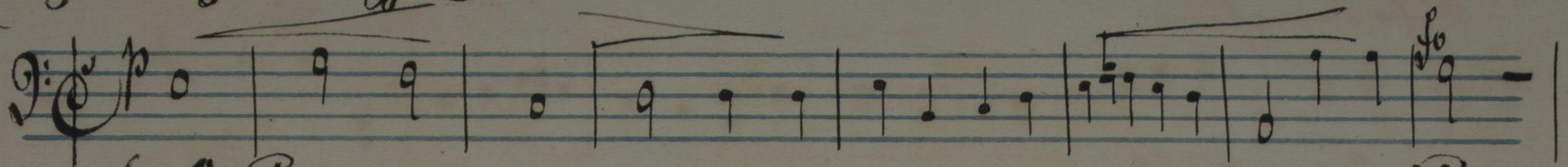
1. qua vi - - - - - ta mor - tem per - tu - lit,
 2. ut nos - - - - - la - va - - - - - ret sor - - - - - di - bus,
 3. di - cen - - - - - do na - - - - - ti - o - - - - - ni - bus:

Diminuend.

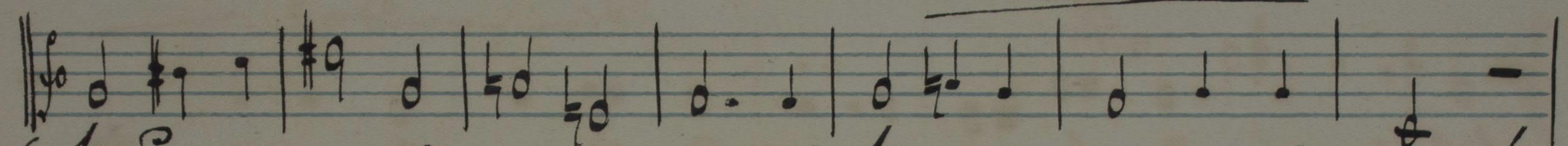
1. et mor - te vi - tam, vi - tam pro -
 2. manavit un - da, un - da et san -
 3. re - gnavit a li - - - - - gno, li - - - - - gno De -

1. - - - - - tu - lit.
 2. - - - - - qui - ne.
 3. - - - - - us.

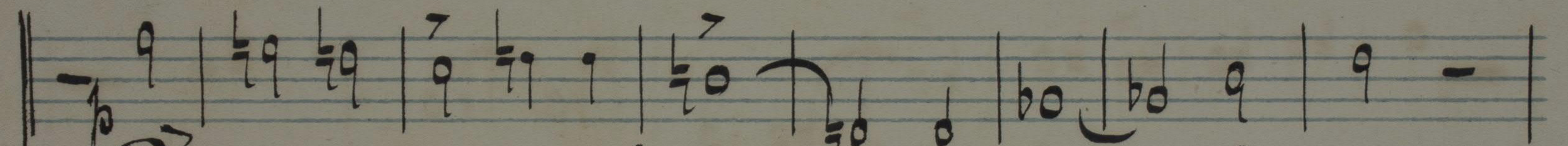
(Die große Lateinische Messe). (Basso.)



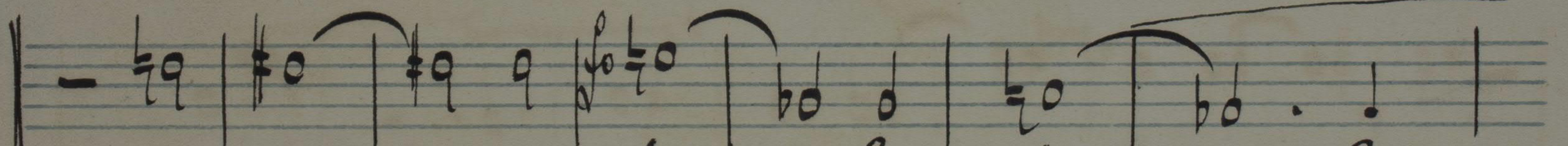
6. O cruce - a - - - vesper u - - - - nica,
7. Te fons sa - lu - - - tis Tri - - - - nitas,



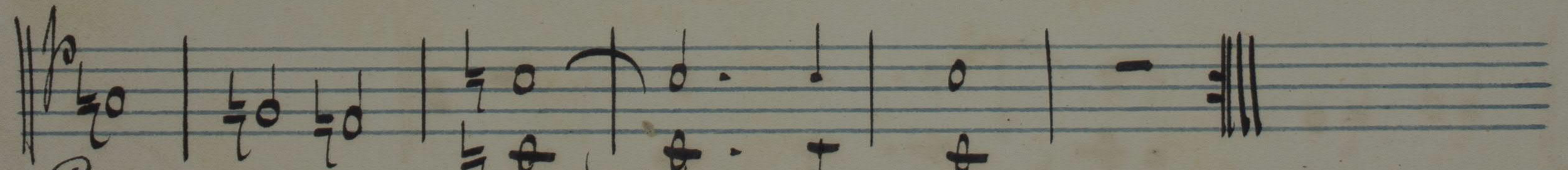
6. hoc - - - passi - o - - - nis tem - - - - po - - - re!
7. Col - - - laudet o - - - - mnis spi - - - - ritus!



6. Pi - - - - is ad - au - - - ge gra - ti - am
7. Qui - - - - bus pru - cis vic - to - ri - am



6. re - is - - - que de - - - le de - - - le
7. lar - gi - ris, largi - - - ris, ad - - - - de



6. Cri - - - - mi - na.
7. prae - - - - mi - um.

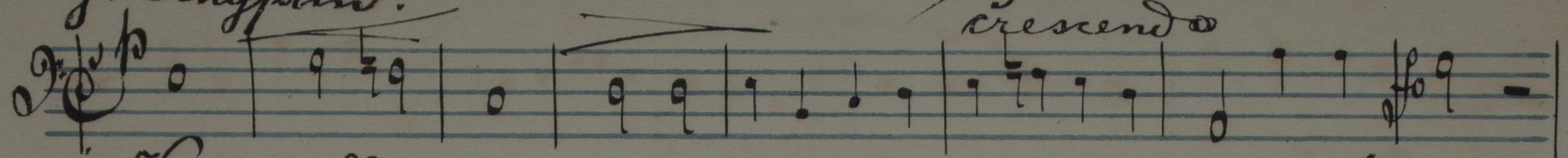
Hymnus: Vexilla regis. Bass.

201576

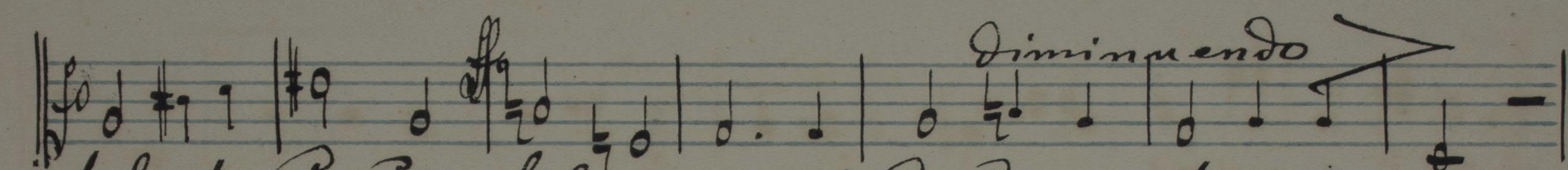
13

Ant. Brückner.

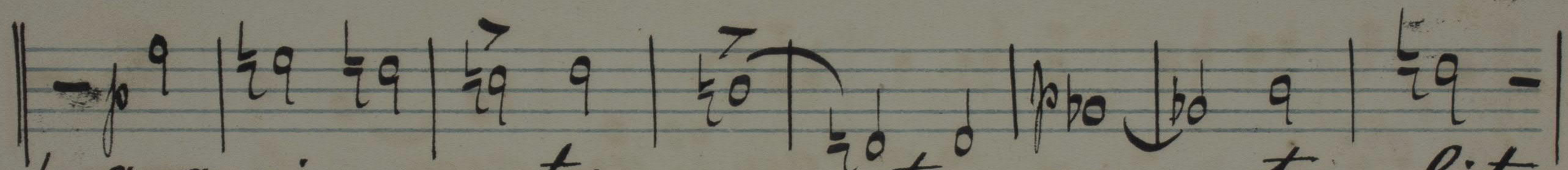
Infr. longis.



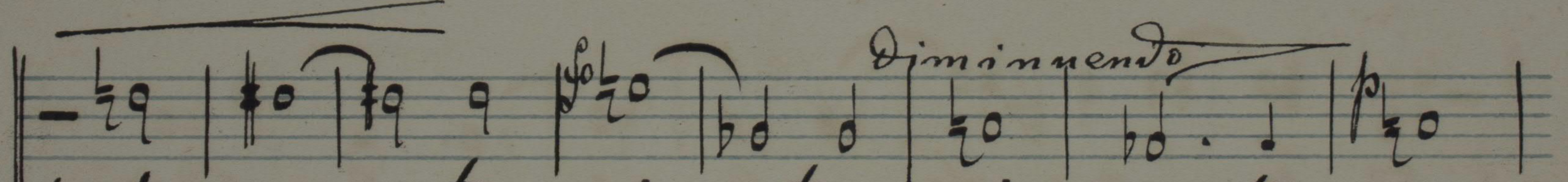
1. Ve - xilla re - gis pro - - - - de - unt,
2. Quae vulne - ra - ta lan - - - - ceae,
3. Im - ple - to sunt quae con - - - - cinit,



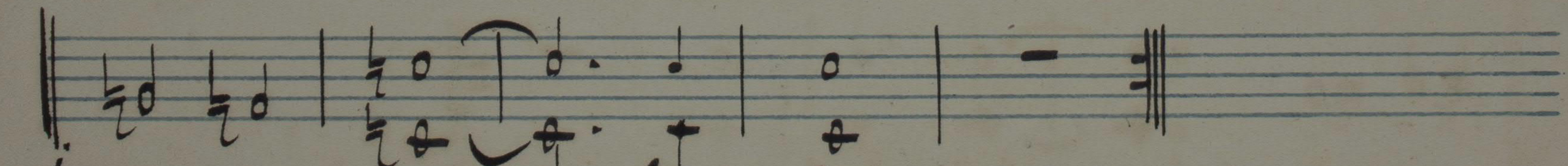
1. fulget - crucis, ful - - get crucis myste - ri - um,
2. mu - crone di - - - - ro cri - - - - minum,
3. Da - - vid fi - de - - li - car - - - - mi - ne,



1. qua vi - - ta mor - - tem per - - tu - lit
2. ut nos - - la - va - - ret sor - - di - bus,
3. di - cen - - do na - - ti - o - - ni - bus:



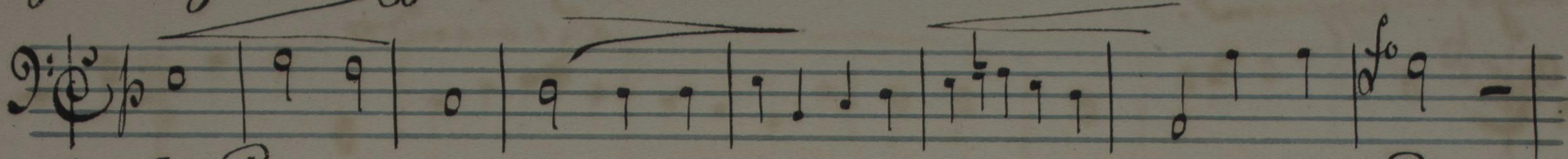
1. et mor - te vi - tam, vi - tam pro -
2. ma - na - vit un - dex un - da et san -
3. re - gna - vit a li - - gno, li - - gno De -



1. - - - - tu - lit.
2. - - - - qui - ne.
3. - - - - us.

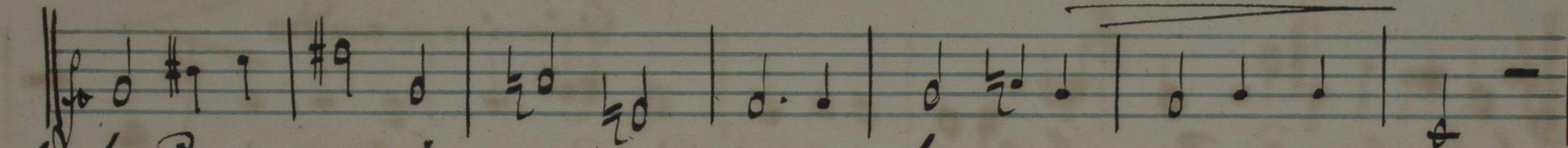
f

(Basso).
(Einzigem latylnm Kreyfau).



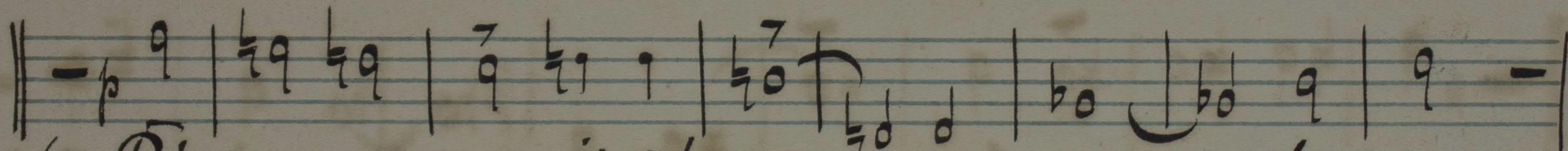
6. O Cruce - a - vespes u - - - - - nica,

7. Te fons salu - - - tis Tri - - - - - nitas,



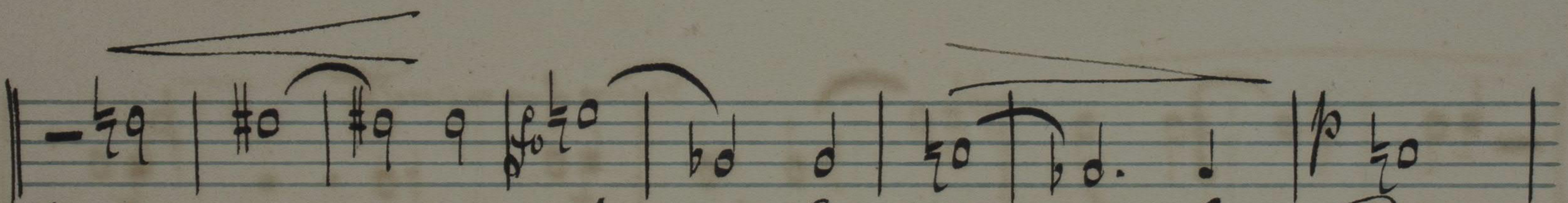
6. hoc - passi - o - - - - nis tem - - - - po - re

7. col - laudet o - - - - mnis spi - - - - ritus



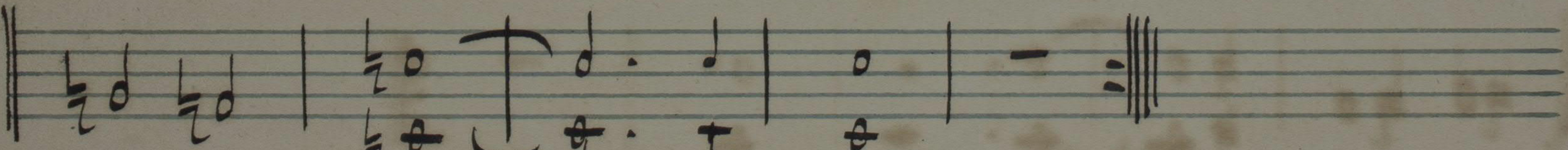
6. Pi - - - - is ad - au - ge gra - ti - am

7. Qui - - - - bus cru - cis vic - to - - - - riam



6. re - is - que de - - - - le, de - - - - le Tri -

7. lar - gi - ris, largi - - - - ris, ad - - - - de prae -



6. - - - - mi - na.

7. ~~mi - um.~~

Hymnus: Vexilla regis.

201516

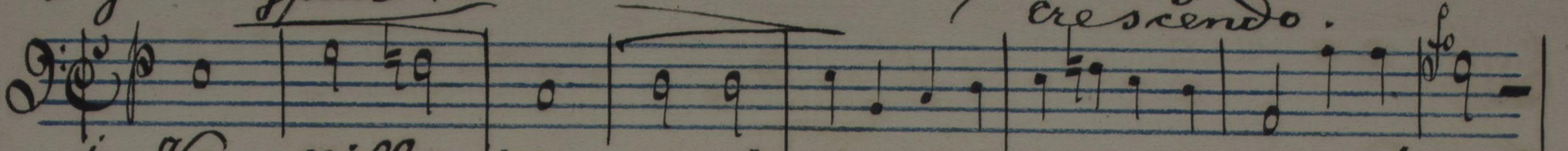
14

Bass.

Ant. Brückner.

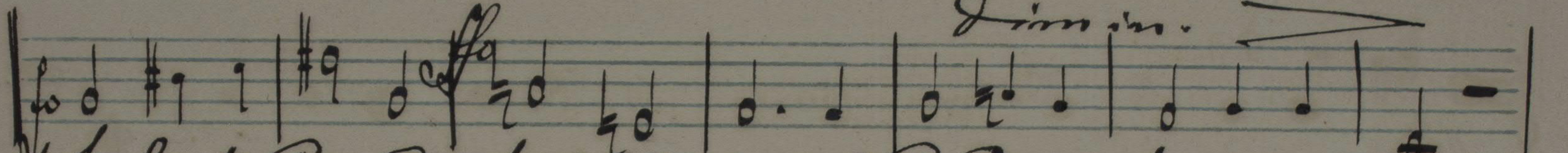
Sub longum.

Crescendo.

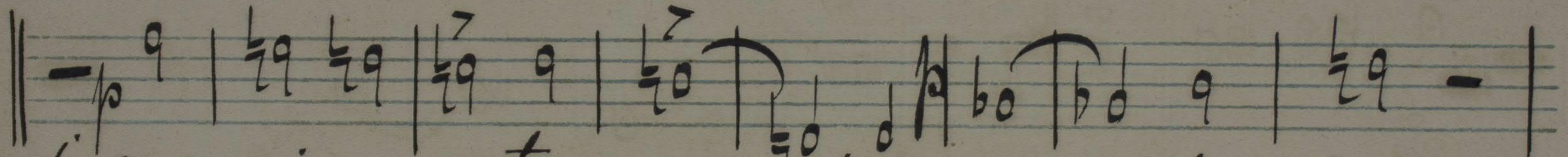


1. Ve - xilla re - gis pro - - - - - deunt,
 2. Quae vulne - ra - ta lan - - - - - teae,
 3. Im - ple - ta sunt, quae con - - - - - cinit,

Dimin.

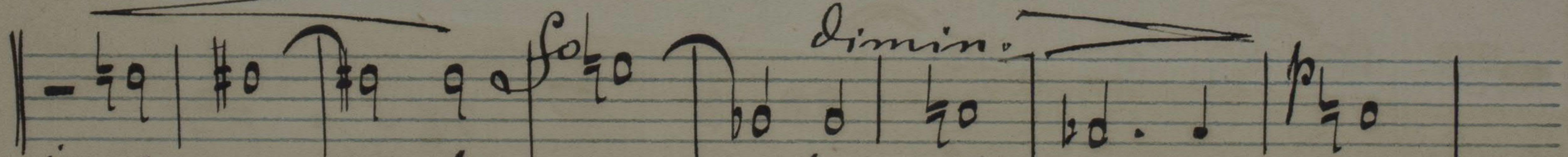


1. fulget - crucis, ful - - - - - get crucis myste - ri - um,
 2. mu - crone di - - - - - ro pri - - - - - minum,
 3. Da - - - - - vid fi - de - - - - - li - caro - - - - - mine,

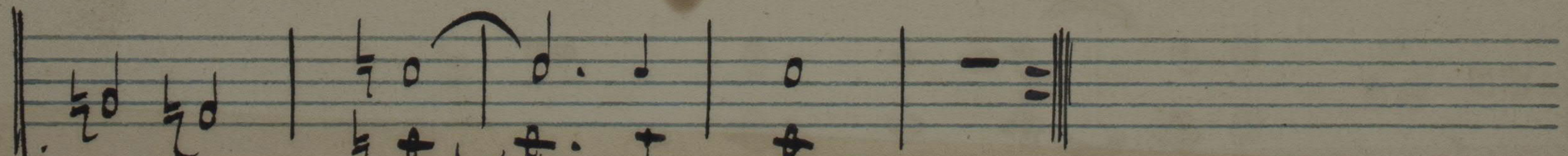


1. qua vi - - - - - ta mor - - - - - tem per - tu - lit,
 2. ut nos - - - - - la - va - - - - - ret sor - - - - - di - bus,
 3. di - cen - - - - - do na - ti - o - - - - - ni - bus:

dimin.



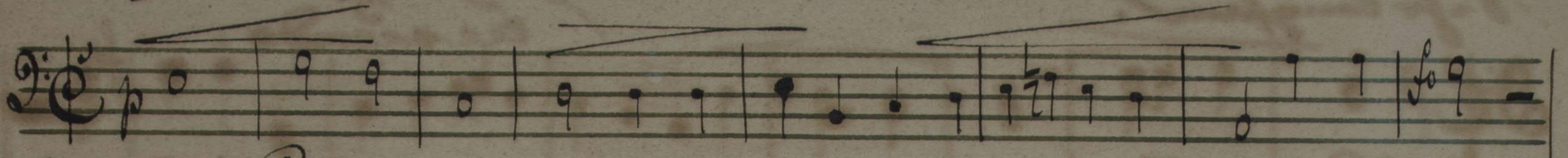
1. et mor - te vi - - - - - tam, vi - - - - - tam pro -
 2. mana - - - - - vit un - da, un - da et san -
 3. re - gna - vit a li - - - - - gno, li - - - - - gno De -



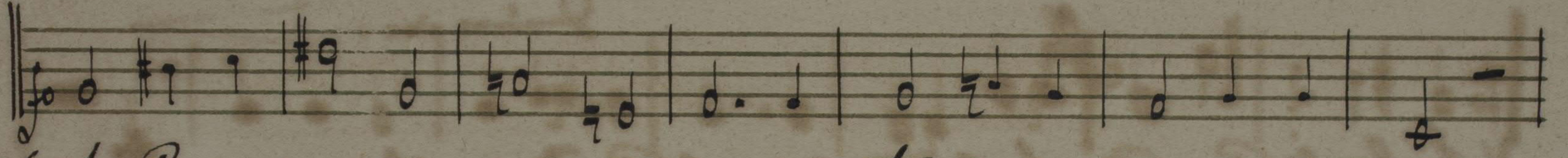
1. - - - - - tu - lit.
 2. - - - - - qui - nes.
 3. - - - - - us.

V.S.

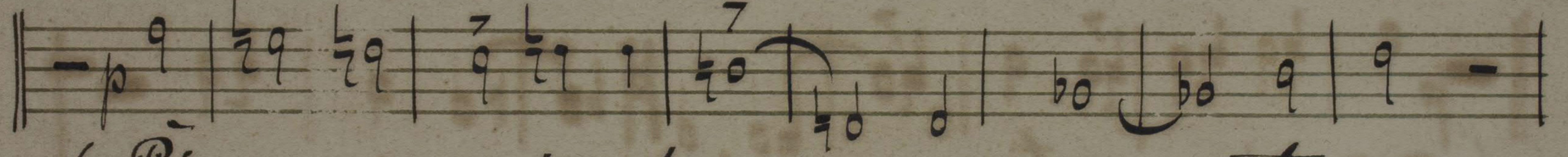
(Synchroni lutheran Kirchengesang.) (Bass.)



6. O cruce - a - ves pes u - - - - - ni - coo,
7. Te fons salu - - - - - tis Tri - - - - - ritas,



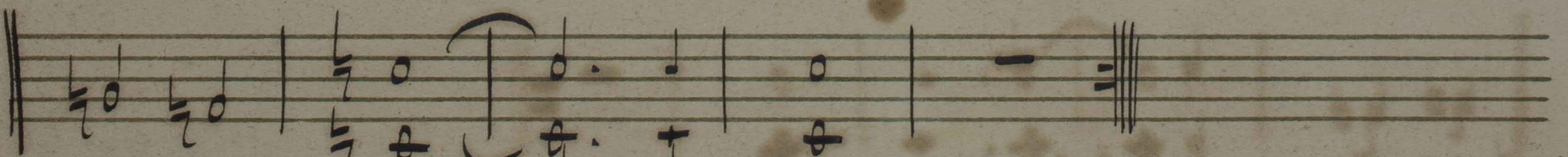
6. hoc - passi - o - - - - - nis tem - - - - - po - re
7. col - laudet o - - - - - mnisppe - - - - - ritus



6. Pi - - - - - is ad au - ge gra - ti - am
7. Qui - - - - - bus cru - cis vic - to - - - - - riam



6. re - is - que de - - - - - le, de - - - - - le tri -
7. largi - ris, lar - gi - - - - - ris, ad - - - - - de prae -



6. - - - - - mi - na
7. - - - - - mi - um.