

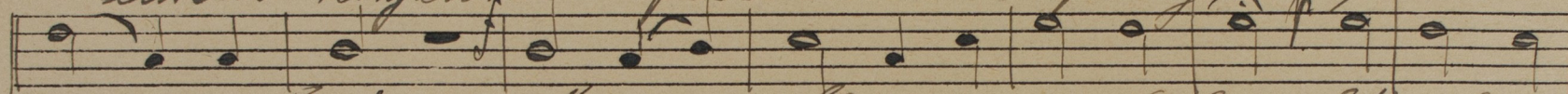
# Symphonis

in L'Angelum custodem  
v. A. Brückner

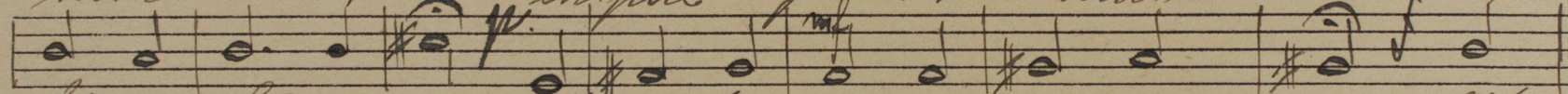
20/48  
Soprano 4.



1. Jam lucis orto sidere dignare, custos  
2. Eura refulgens lumine, quod emicat de  
3. lordis regentis ferream perfringe perti-



Angele! Mentis fugare nubila et alma  
Nimine! Me sanctitatis aemulum & labe  
- nasiam; culpae propterea sarcina Nonni no-



ferre lumina; Merita pudentes esto ce, ut  
servas integrum, Ne castitatis candida con-  
- senti subleua Boenasque sibi debitas Fac



et sequar me comone. A--men.  
- amineur lilia.  
supplicans ut arceas.

*S. Gemmis + A. Brückner* in *S. Angelum virtodem*

20/48 2

*Soprano - 4.*

1. Jam lucis orto sidere dignare, virtos  
2. Luro refulgens lumine, quod emicat de  
3. cordis regentis ferream Berfringe, p. perti =

Angeli! Mentis fingere nebula. Et alma  
Namine! Ne sancti tatis nemulum & labe  
nasciam; culpa gravatum sarcina Manni po =

ferre lumina; Meresta prudens edoce, ut  
serves integrum, Ne casti tatis candida con =  
tenti sibleva Boenaspue sousti debitas Fac

ea sequar me como ne.  
= saminentur lilia. A...men.  
supplicans ut arceas.

# Gymnium

in S. Angelinum existodem.

Soprano 14.

3

v. A. Brückner

20/48

*p* *mf*

I Jam lucis orto si = de = re Di = gnare, existos  
II Puro re fulgens lumine, Quod emicat de  
III lordis regentis ferre om Perfringe perti =

Ange le! Mentis fringere mihi la et salua  
tu mine! Ne sanctitatis aenialium A labe  
na ciam; culpae gravatum sarcina Ma ni po =

*p.* *mf.*

ferre luminas Ne re sta prudens e doce, ut  
serves integrum, Ne casti satis candida con =  
= senti sub le va Poenasque senti debitas Fac

esse gnare me co mo ne. A... men  
da mi nentur lili or.  
supplicans ut arceas.

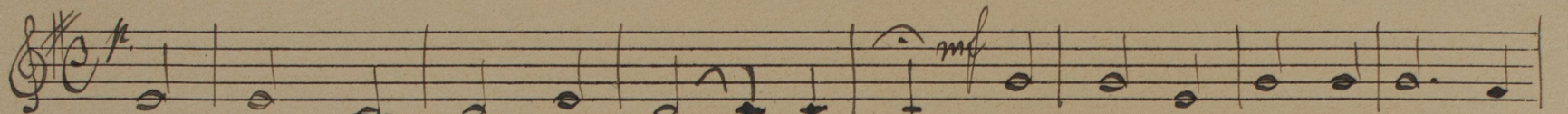
Reservatum  
Brückner

*Symnis in D. Angelum custodem*  
*v. A. Brückner*

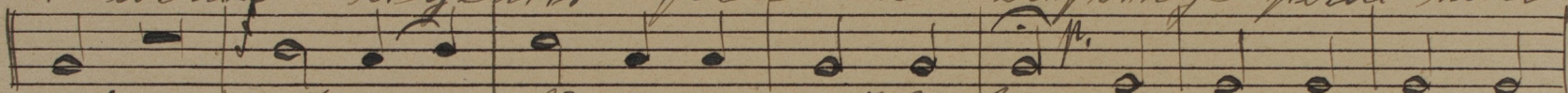
20/48

4

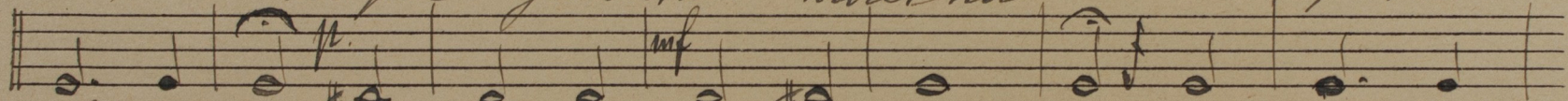
*Al. 4.*



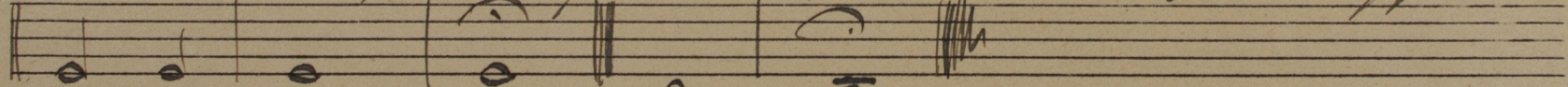
1. Jom lūsis voto si de re dignare, cūctos Ange-  
2. Puro re fulgens lumine, quod emicat de thūmi-  
3. lordis regentis ferre am Berfringe perdi naci-



le! Mentis fugare nūbila Et alma ferre  
ne! Nec somniantis ac nūtum A labe servas  
am; lūpae gravatum sarcina Manni potenti



lūmina; Meresta prudens edoce. Ut ex se =  
integrū, Ne casti tatis candida longa mi =  
subleoa Doenarqne sūti debitas Fac suppli =



= quorne comone.  
= mentis lilia. A. . . men.  
= cans ut areas.

*Symnis* in S. Angelum custodem  
A. Brückner

20/48

5

Alf. H.

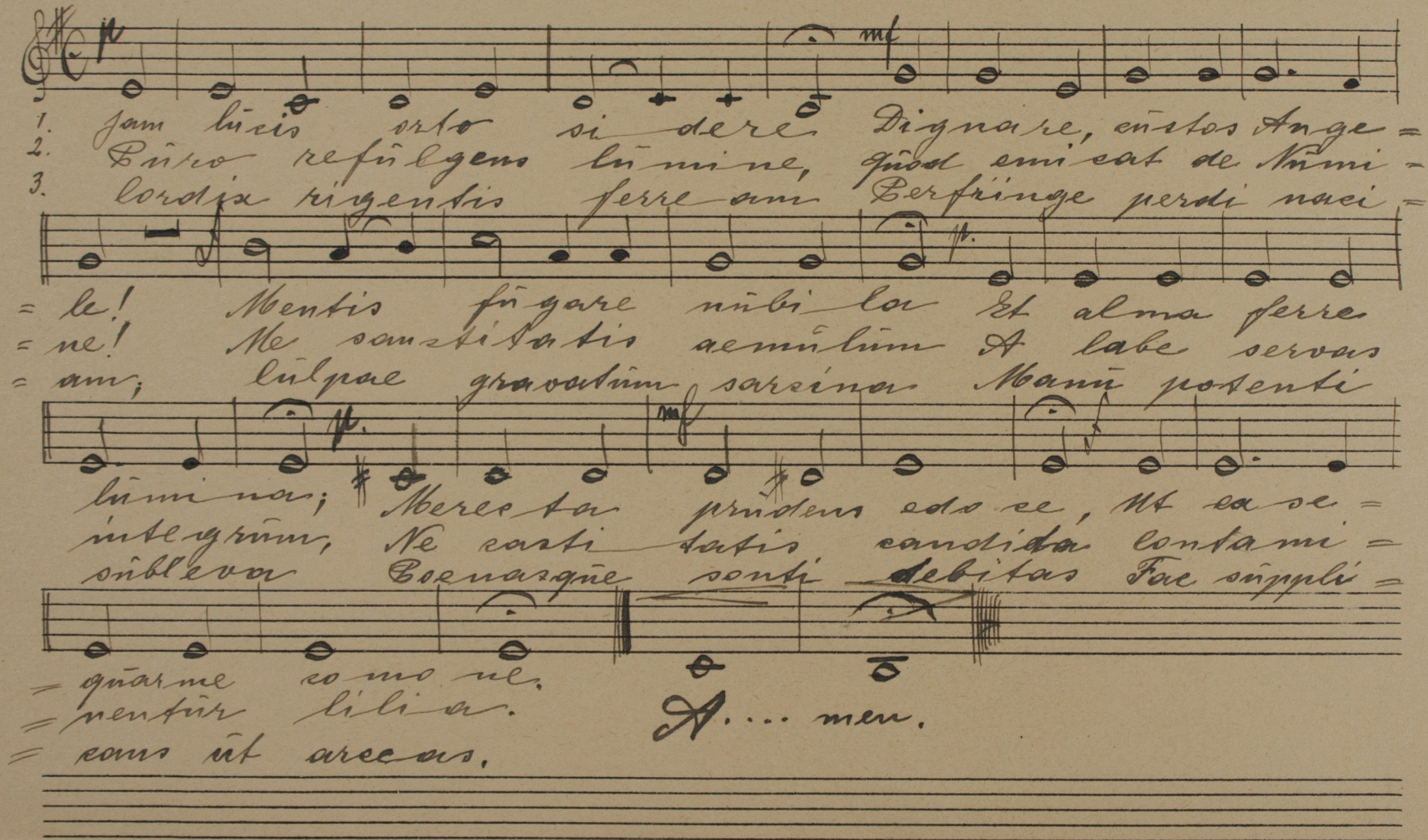
*I* Jam lucis orto sidere Di gnare, custos Ange-  
*II* puro re fulgens lu mine, quod emicat de thumi-  
*III* lor oliv ri gentis fer re am Perfringe perdi naci-  
le! Mentis fugare mibi lac Et alma ferre  
ne! Ne sausti satis ac miltum A la be servas  
am, lunt pae gravatum sarcina Manu potenti  
lu mi na; Ne re cla gnu dens edo ce, M ex se-  
in se grum, Ne casti - ta sis, candi da con ta mi-  
sibile var Poe nos que sosti, debitas Pae suppli-  
quar me como ne.  
nentur lili a.  
coms at arceas.

scritto  
Regeret am

*Symonis* in *S. Angelum custodem*  
v. *A. Brückner*

20/48

*Alf. H.*



1. Jam lucis orto sidere Dignare, custos Ange =  
2. Puro refulgens lumine, quod emicat de thymi =  
3. lordix ridentis ferre am Perfringe perdi naci =  
= le! Mentis fugare nubi loc Et alma ferre  
= ne! Ne sensitatis acmulum A labe servas  
= am; culpa graoatum sarcina Manu posenti  
lumina; Meres ta pndens edo ee, ut ea se =  
integrum, Ne casti tatis candida contami =  
sibleoer Boenarqne senti debitas Fac suppli =  
= quame como ne. A... men.;  
= ventur lilia.;  
= cons ut areas.

# S. Symonis

in S. Angelum entodem  
v. A. Brückner

20/48

7

Tenor 5

1. Jam lucis orto sidere Dignare, castos  
2. Caro refulgens lumine, quod emicat de  
3. Cordis regentis ferream Perfringe parti =

An... gele! Mentis fingere nibila Et  
Nū... mine! Ne sancti tatis aemulū A  
= na... riam; Dulcor gravatum sarcina Ma =

alma ferre lumina; Merita prudens esto =  
labe seros integrum; Ne casti tatis candi =  
= mī potenti sibile va Boenarqne soubi debi =

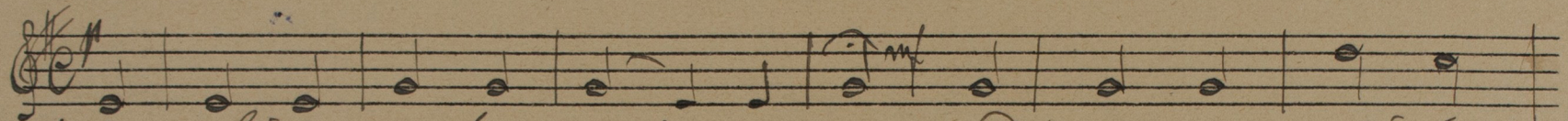
= ce, Mē exsequar me es mone. A... men.  
= da contaminentur libra.  
= fas For supplicans ut areas.

# Symphonia

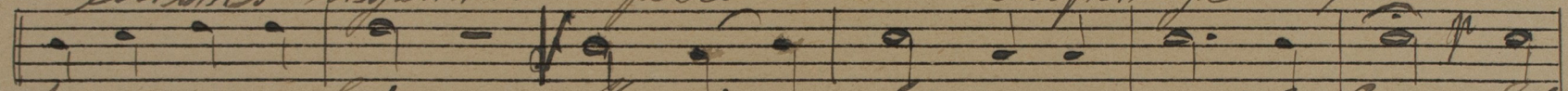
in S. Angelum custodem  
v. A. Brückner

2048

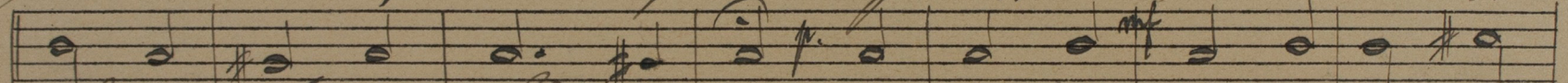
Tenor 5.



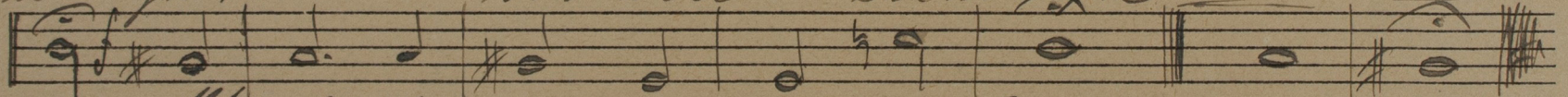
1. Jam lucis orto sideris dignare, cunctas  
 2. Buro resurgens lumine, quod emisit de  
 3. Lordis regentis ferream Berfringe perti-



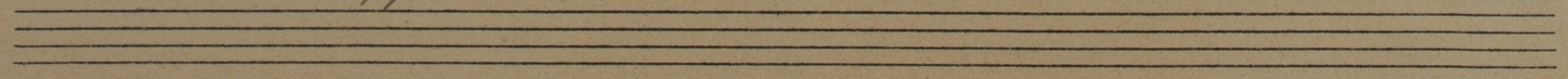
An... gele! Mentis fingere nubila Et  
 An... mine! Ab. sanctitatis nemulum A.  
 = na... eiam; lilyae gravatum sarcina Aba-



alma ferre lumina; Mereta prudens esto=  
 Labe serres integrum, Ne castitatis condi=  
 = mi potenti subleua Boenasque souli debi=



= ce, ut ex sequar me commune.  
 = da lonta mi ner tur lilia.  
 = fas Fac supplicans ut arceas.





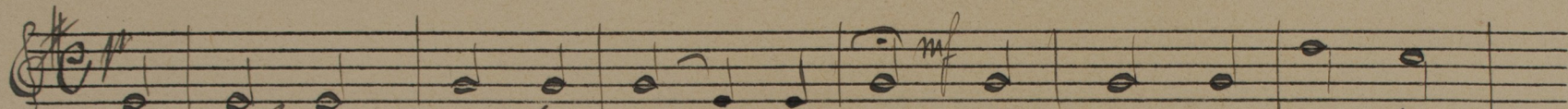
# S. Symonis

in S. Angelum custodem  
v. A. Brückner.

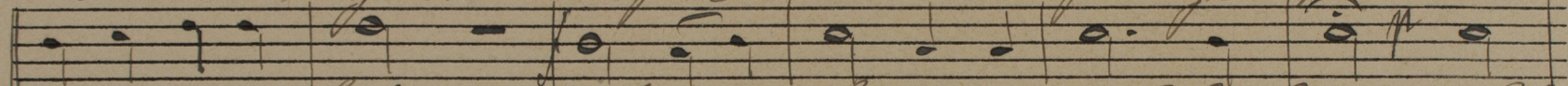
20148

9

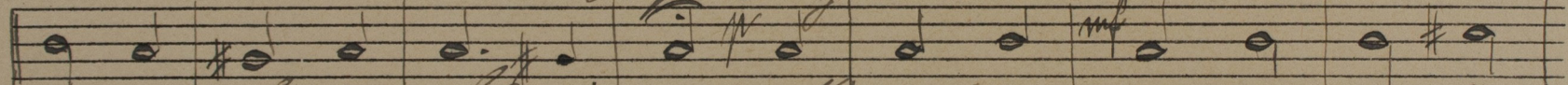
Tenor 5



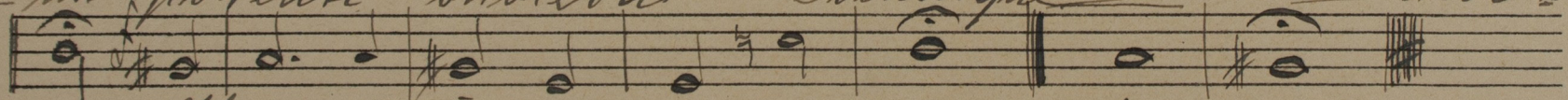
1. Jam lucis orto sidere Dignare, custos  
2. Buxo. refulgens lumine, quod emicat de  
3. Cordis regentis ferream Berfringe perti-



An --- ge! Mentis fugare mihi la Et  
Nū --- mine! Ne senectutis aenitua A.  
= no --- eiam; culpa gravatum parca Ma =



alma. ferre lumina; Moresque prudens esto =  
labe serves integrum, Ne castitatis candi =  
= mi, posenti subleoa. Coenasque senti = debi =



= ee, Ut ex se quare commune. A... men.  
= da contaminentur lilia.  
= Das Fac supplicans ut arceas.

# St. Symonis

in L. Angelum eiusdem  
v. A. Brückner.

20/48 10  
Tenor 5

1. Jam lucis orto sidere dignare, cistes  
2. Duro refulgens lumine, quod emicat de  
3. cordis rigentis ferream Perfringe perti =

An...gele! Mentis fingere nubila et  
Nū...mine! Ne somnolentis ac milium A.  
= na...riam; culpae procatum sarcina Ma =

alma ferre luminari; Ne resca prudens edo =  
labre serues integrum; Ne castitatis candi =  
= mi potenti sublevari Poenasque soti debi =

= re, Ut exsequar me comone. A...men  
= da contaminentur lilia.  
= Has Pre supplicans ut arceas.

Symnus in S. Angelum custodem.  
v. A. Brückner

2048 11  
Basso, 5

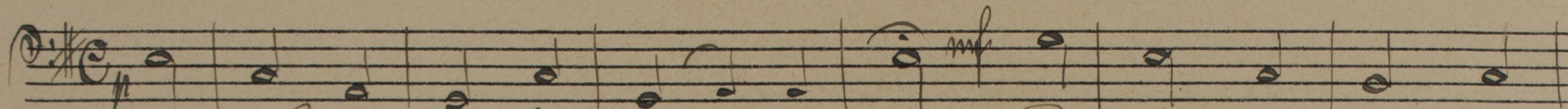
I Jam lu- cis or- ta si- de re Di- gna- re, en- sto-  
II Pa- ro re- fulgens lu- mi- ne, quod e- mi- cat de  
III Cor- dis ri- gents fer- re- am, Per- fru- ge per- ti-  
An- ge- le! Men- tis fru- ga- re ni- bi- la Et  
Ni- mi- ne! Ne san- cti- ta- tis ae- mi- lum A.  
na- ri- am; Lil- iae gra- va- tum sar- si- nae Ma-  
ul- ma fer- re lu- mi- na; Ne- res- ta, pri- dens e- do-  
la- be ser- ves in- se- gum, Ne car- ti- ta- tis con- di-  
ni- po- ten- ti suble- vae Doe- nasque sou- ti, debi-  
= ee, Ut ex- se- qua- me com- mo- ne. A... men;  
= dae Con- so- mi- nen- tur li- li- a.  
= das For- sup- pli- e- om- ut ar- ce- as.

Requiem  
Basso

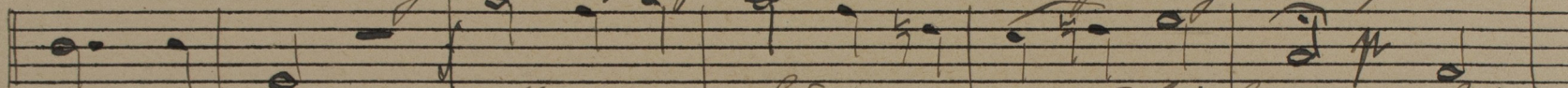
# Symonis

in S. Angelum custodem  
v. A. Brückner

20/48 17  
Bass. 5



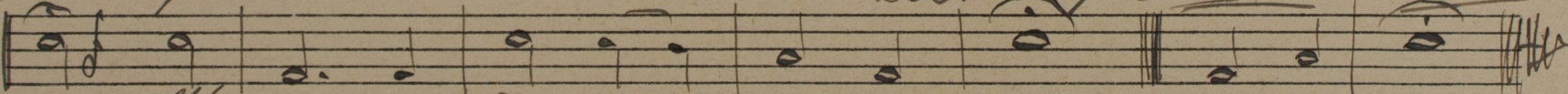
1. Jom lucis orto sidere dignare, cistas  
2. Puro refulgens lumine, quod emittat de  
3. Cordis regentis ferream, Perfringe perti-



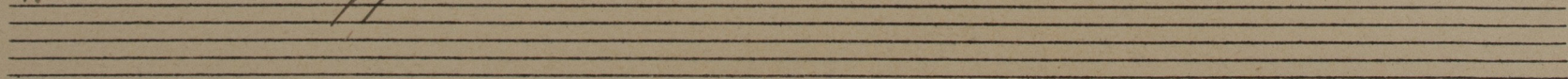
Angele! Mentis fugare nebula et  
Nimine! Me sensitatis semilum A  
= nascitur; lulpae gravatum sarcina Ma-



alma ferre luminari; Meretur prudens edo-  
labe servos integrum; Ne castitatis candi-  
= ni possenti sublevar Boenas que sonti debi-



ce, Ut ex sequar me commune. A..... men.  
= da contaminentur lilia.  
= tos Fac supplicans ut areas.



# Symonis

in S. Angelum custodem  
v. A. Brückner

20148 13  
Bass 5

1. Jam lucis orto sistere Dignare, custos  
2. Büro refulgens lumine, quod emittat de  
3. lordis regentis ferream, Perfringe perti-

Angeli! Mensis fugare nubila et  
Nimine! Ne semitatis ac milium A-  
naxiam; Culpa, gravatum sarcina Ma-

alma ferre lumina; Ne reser pndens edo-  
labe seros integrum, Ne casti latis candi-  
-ni potente onibera Poenasque senti debi-

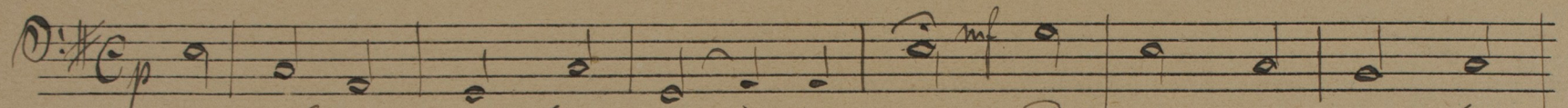
= ce, Ut ex sequar me camo ne. A... men.  
= da Consa minentur lili or.  
= Aas Fac supplicans ut areas.

*S. Joannis* in *S. Angelum custodem*  
v. *A. Brückner.*

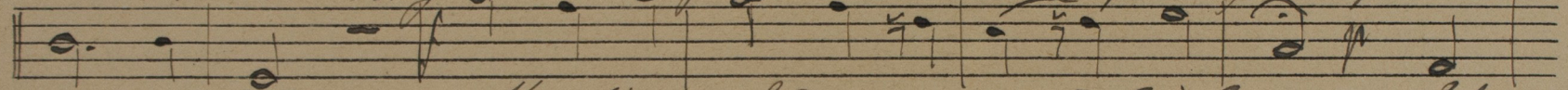
20148

14

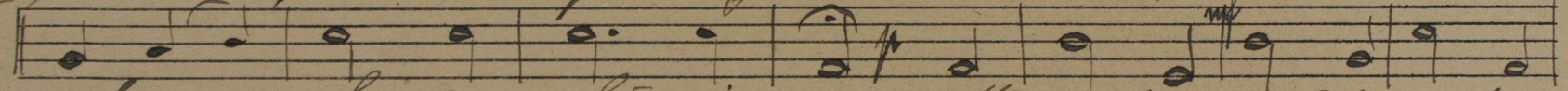
Bass. 5



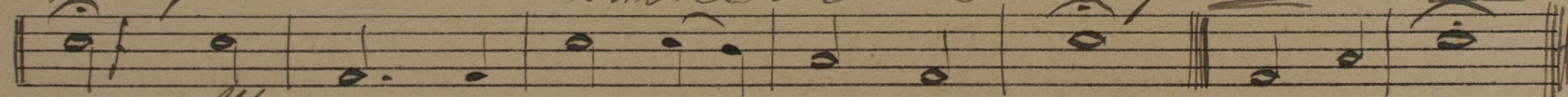
1. Jam lucis orto sidere Dignare, custos  
2. Purpure fulgens lumine, quod emittat ole  
3. loris regentis ferream, Perfringe parti =



Angeli! Mentis fugare nebula Et  
Nimine! Ne sanctitatis acmilum A.  
= nasiam; culpa gratiam sarcina Mau =



alma ferre lumina, Meresta prudens edo =  
la be serres integrum, Ne castitatis candi =  
= mi potenti subleoa Coenaeque soti debi =



= ee, Ut exsequar me comone. A. .... men.  
= da Condaminentur lilia.  
= has Fac supplicans ut arceas.

