

LA FLUTE ENCHANTEE.

OPÉRA COMIQUE.

OUVERTURE.



Andante.

Timbales.

De Mozart Arrangée par TAVAN.

en Mi^b Si^b

Musical notation for the first staff, starting with a bass clef and a common time signature. It begins with a forte (*f*) dynamic and includes a piano (*p*) dynamic later. There are first endings marked with the number '1'.

Allegro.

Repli Vns.

Musical notation for the second staff, starting with a bass clef and a common time signature. It includes a trill (*tr*) and a first ending marked with the number '8'.

Musical notation for the third staff, starting with a bass clef and a common time signature. It includes a trill (*tr*) and a first ending marked with the letter 'A'.

Musical notation for the fourth staff, starting with a bass clef and a common time signature. It includes first endings marked with the numbers '1' and '3'.

Musical notation for the fifth staff, starting with a bass clef and a common time signature. It includes a fortissimo (*ff*) dynamic and first endings marked with the number '1'.

Musical notation for the sixth staff, starting with a bass clef and a common time signature. It includes a forte (*f*) dynamic and first endings marked with the letters 'B 10', 'C', and '4'.

Musical notation for the seventh staff, starting with a bass clef and a common time signature. It includes a forte (*f*) dynamic and first endings marked with the numbers '2' and 'D 6'.

Musical notation for the eighth staff, starting with a bass clef and a common time signature. It includes a first ending marked with a circled '1'.

Andante.

Allegro.

Repli Vns.

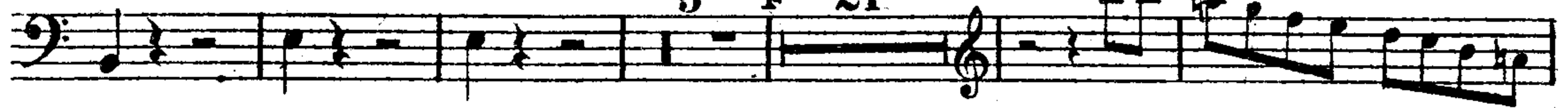
Musical notation for the ninth staff, starting with a bass clef and a common time signature. It includes first endings marked with the number '1' and a first ending marked with the number '10'.

Musical notation for the tenth staff, starting with a bass clef and a common time signature. It includes a forte (*f*) dynamic and a first ending marked with the letter 'E' and the number '2'.

Timbales.

Repli Vns.

5 F 21



LA FLUTE ENCHANTÉE

OPÉRA COMIQUE.
OUVERTURE.



Gr. Caisse et Cymbales.

Andante.

12

Allegro.

repli vns

MOZART - TAVAN

17

tr

f

A

f

2

3

ff

B 10 C 2

4

2

f

f

D 6

Andante.

1

f

Allegro.

10

repli vns

E

1

f

F 21

repli vns

G

2

3

1

f

ff

1

1

H 10

4

f

f

I 6

f

2