

FOURTH SERIES.

---

EPISCOPAL CHURCH MUSIC.

BY

**DUDLEY BUCK.**

---

MORNING SERVICE (Festival), Op. 89.

No.		Price, Net.	
1.	Te Deum, in G. - - - -	35	
2.	Benedictus, in G. - - - -	10	
3.	Kyrie Eleison. (Seven Sets of Responses to the Commandments.) -	15	
4	{ a. "Art thou weary?" Hymn 514.	5	
		b. "When thro' the torn sail." Hymn 266.	5
		c. "Jerusalem, high tower thy glorious walls." Hymn 497.	5

EVENING SERVICE, Op. 82.

No.		Price, Net.
1.	Bonum Est, in A <sub>2</sub> . - - - -	15
2.	Deus Misereatur, in A <sub>2</sub> . -	20

---

EVENING SERVICE (Festival), Op. 88.

No.		Price, Net.
1.	Cantate Domino, in E <sub>2</sub> . - - -	25
2.	Benedic Anima, in E <sub>2</sub> . - - -	20

---

NEW YORK :

**G. SCHIRMER,**

No. 35 Union Square (West Side).

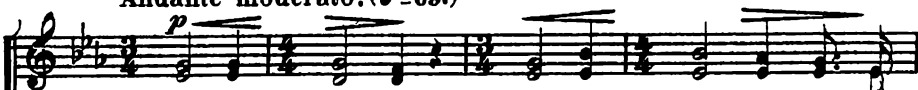
"ART THOU WEARY?" (Hymn 514.)

(The small notes for the Organ Accompt.)

DUDLEY BUCK. Op. 89. No 4.  
4th Series Epis.Ch. Music.

Andante moderato. (♩ = 69.)

SOPRANO.  
ALTO.



Art thou wea - ry. art thou lan - guid, Art thou

TENOR.  
BASS I.II.



sore dis - tress'd? "Come to me," saith One, and com - ing he at



BASS SOLO.

rest, he at rest." Hath he marks to lead me to him,



If he be my Guide? "In his feet and hands are wound -



SOPR. SOLO.

prints. And his side." Is there di - a - dem. as Mon - arch. That his



CHO. *mf*

brow — a - - - dorns? "Yea, a crown, in ve - ry sure -

ALTO SOLO. *p*

Org.

ty. But of thorns." If I find him, if I fol - low.

CHO.

What his guerdon here? "Ma - ny a sor - row. ma - ny a la - bor.

TEN. SOLO. *pp*

Ma - ny a tear." If I still hold close - ly'

Org.

to him, what hath he at last? "Sor - row van - quished.

la - bor end - ed. Jor - dan pass'd." If I ask him

*ff* *p*

to re - ceive me. Will he say me nay? "Not if earth

*p* *ff*

— and not if heav - - en Pass a - - way." Finding. fol - low - ing,

*p* *cresc.* *p* *cresc.*

keep - ing. struggling. Is he sure to bless? Saints. a - pos - tles.

*p* *p*

prophets. martyrs. Answer, Yes. An - swer, Yes." A - - men.

*p* *p*

# WHEN THRO' THE TORN SAIL. (Hymn 266.)

Con moto. (♩ = 96.)

DUDLEY BUCK. Op. 89. N<sup>o</sup> 4!

1. When thro' the torn sail the wild tem-pest is streaming, When  
 2. O Je - sus, once rock'd on the breast of the bil - low, A -  
 3. And O, when the whirl - wind of pass - ion is rag - ing, When

o'er the dark wave the red light - ning is gleam - ing.  
 roused by the shriek of dis - - pair from thy pil - low.  
 sin in our hearts its wild war - fare is wag - ing.

Nor hope lends a ray — the poor sea - man to cher - ish,  
 Now seat - ed in glo - ry. the — mar - i - ner cher - ish,  
 Then send down thy Spi - rit, thy re - - deem - ed to cher - ish,

We fly to our Ma - ker, Save. Lord, save. or we per - ish.  
 Who cries in his an - guish, Save. Lord. save. or we per - ish.  
 Re - buke the de - stroyer, Save, Lord. save. or we per - ish.

Org.

Jerusalem, high tower thy glorious walls. (Hymn 497.)

DUDLEY BUCK. Op. 89. N<sup>o</sup> 4c  
4<sup>th</sup> Series Epis. Ch. Music.

Con moto.

SOPRANO. *mf*  
1. Je - ru - sa - lem! high tower thy glo - rious walls. Would God

ALTO. *mf*  
2. O glad - some day, and yet more glad - some hour! When shall

TENOR. *mf*  
3. What throng is this, what no - ble troop that pour's Ar - rayed

BASS. *mf*  
4. Un - num - ber'd choirs, be - fore the Lamb's high throne. There shout

ORGAN. *mf* *ff*  
Con moto. (♩ = 110.)

*mf*  
— I were in thee! De - sire of thee my long - ing heart — en -

— that hour have come, When my re - joic - ing soul — its own — free

— in beau - teous guise. Out from the glo - rious ci - ty's o - - pen

— the ju - bi - lee! With loud re - sound - ing peal, and sweet - - est

Sw

Omit to \* for 2d & 3d verses.

thral's, De - sire at home to be. Wide from the world out -  
 pow'r. Shall use in go - ing  
 doors. To meet my wond'-ring A hun - dred thou - sand  
 tone, In bliss - ful ex - sta - cy. Omit to \* for 2d & 3d Verses.

*ff*

Gr. *f*

Ped. *8ras*

leap - - ing, O'er hill, - - and vale, and plain, My soul's strong wing is  
 voice - - es Take up - - the wond'-rous song, E - ter - ni - ty re -

*ff*

Ped. *8ras*

<p>sweep - ing Thy por - tals to at - tain. long. home. It</p> <p>joi - ces. God's prais - es to pro - long. eyes? The</p>	<table border="1" style="width: 100%; border-collapse: collapse;"> <tr> <td style="width: 50%; text-align: center;">Vs. 1.</td> <td style="width: 50%; text-align: center;">Vs. 4. to Coda. *</td> </tr> </table>	Vs. 1.	Vs. 4. to Coda. *
Vs. 1.	Vs. 4. to Coda. *		

*p*

*p*

*p*

*p*

*p*

self to Je - sus giv - ing. In trust to his own hand. To  
 hosts of Christ's e - lect - ed. The jew - els that he bears. In

dwel a - mong the liv - ing. In that blest Fa - ther - land, blest  
 his own crown se - lect - ed. To wipe a - way, to wipe a -  
 Fa - way

men.  
 Fa - - ther - land. A - - men. A - - men. A - - men.  
 way - my tears. A - men. A - men, A - - men.  
 - - ther - land. A - men. A - men, A - - men.  
 - - my tears. A - men. A - men, A - - men.

Coda after Vs. 4.  
 Repeat to Verses 3. & 4.