

Sinfonia Turca

StWV 138

J. F. X. Sterkel

Allegro

Viola 2

Measures 1-3: Treble clef, 3/8 time signature. Dynamics: *p*. The music consists of eighth notes in a steady eighth-note pattern.

4

Measures 4-6: Treble clef, 3/8 time signature. Dynamics: *fp*. Measure 4 starts with a quarter rest, followed by eighth notes. Measure 5 has a quarter rest, followed by a sixteenth-note triplet. Measure 6 has a quarter rest, followed by eighth notes.

7

Measures 7-10: Treble clef, 3/8 time signature. Dynamics: *fp*, *fp*, *f*, *pp*. Measure 7 has a quarter rest, followed by eighth notes. Measure 8 has a quarter rest, followed by eighth notes. Measure 9 has a quarter rest, followed by eighth notes. Measure 10 has a quarter rest, followed by eighth notes.

11

Measures 11-14: Treble clef, 3/8 time signature. Dynamics: *fp*, *fp*. Measure 11 has a quarter rest, followed by eighth notes. Measure 12 has a quarter rest, followed by eighth notes. Measure 13 has a quarter rest, followed by eighth notes. Measure 14 has a quarter rest, followed by eighth notes.

15

Measures 15-18: Treble clef, 3/8 time signature. Dynamics: *fp*, *f*, *ff*. Measure 15 has a quarter rest, followed by eighth notes. Measure 16 has a quarter rest, followed by eighth notes. Measure 17 has a quarter rest, followed by eighth notes. Measure 18 has a quarter rest, followed by eighth notes.

18

Measures 19-20: Treble clef, 3/8 time signature. Measure 19 has a quarter rest, followed by eighth notes. Measure 20 has a quarter rest, followed by eighth notes.

21

Measures 21-26: Treble clef, 3/8 time signature. Dynamics: *pp*, *mf*, *ff*. Measure 21 has a quarter rest, followed by eighth notes. Measure 22 has a quarter rest, followed by eighth notes. Measure 23 has a quarter rest, followed by eighth notes. Measure 24 has a quarter rest, followed by eighth notes. Measure 25 has a quarter rest, followed by eighth notes. Measure 26 has a quarter rest, followed by eighth notes.

27

Measures 27-32: Treble clef, 3/8 time signature. Dynamics: *pp*. Measure 27 has a quarter rest, followed by eighth notes. Measure 28 has a quarter rest, followed by eighth notes. Measure 29 has a quarter rest, followed by eighth notes. Measure 30 has a quarter rest, followed by eighth notes. Measure 31 has a quarter rest, followed by eighth notes. Measure 32 has a quarter rest, followed by eighth notes.

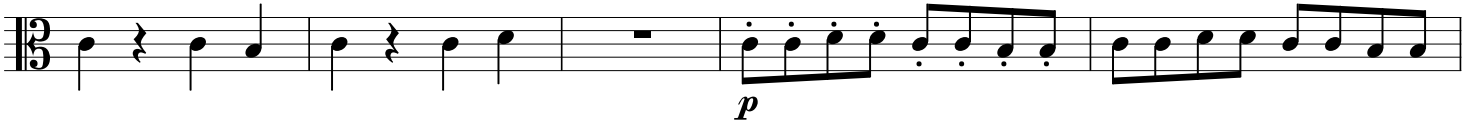
33

Measures 33-38: Treble clef, 3/8 time signature. Dynamics: *pp*. Measure 33 has a quarter rest, followed by eighth notes. Measure 34 has a quarter rest, followed by eighth notes. Measure 35 has a quarter rest, followed by eighth notes. Measure 36 has a quarter rest, followed by eighth notes. Measure 37 has a quarter rest, followed by eighth notes. Measure 38 has a quarter rest, followed by eighth notes, and ends with a repeat sign.

46

pizz.

51

arco

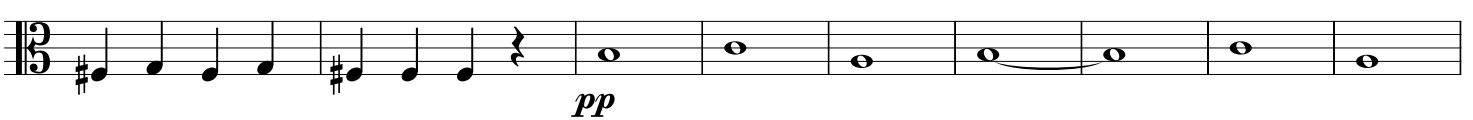
56



60



63



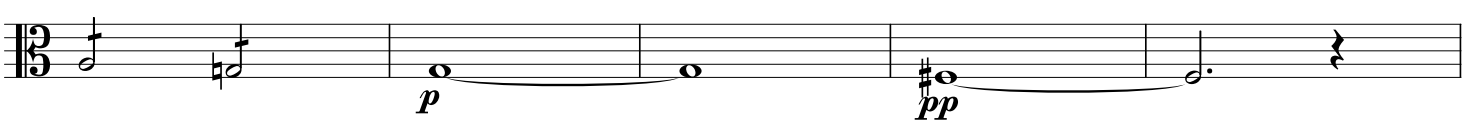
72



77



82



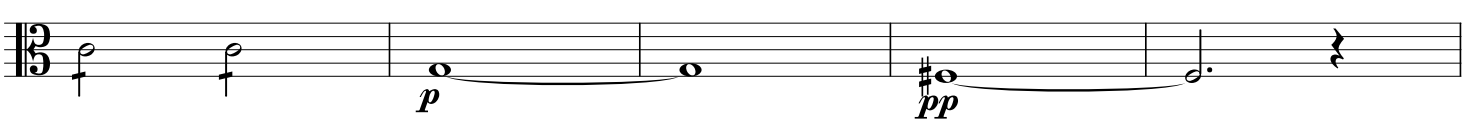
87



91



94



148

Andante

153



158



162



165



169



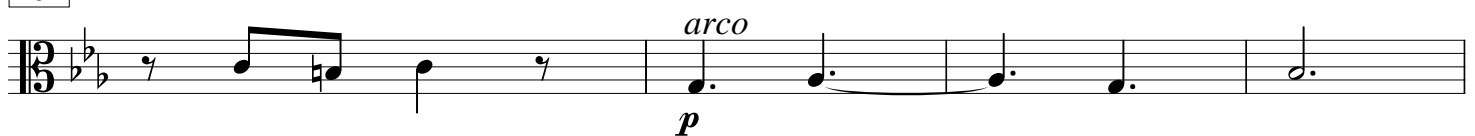
174



179



182



186



190

Musical notation for measure 190, featuring a bass clef, a key signature of one flat, and a 3/4 time signature. The melody consists of a dotted quarter note, followed by a half note with a slur, and another dotted quarter note with a slur. The measure ends with a double bar line and a repeat sign.

194 *Allegro*

Musical notation for measure 194, featuring a bass clef, a common time signature, and a 3/4 time signature. The melody is a continuous eighth-note pattern. The dynamic marking *p* is placed below the first note.

197

Musical notation for measure 197, featuring a bass clef and a 3/4 time signature. The melody starts with a quarter note, followed by a series of eighth notes. The dynamic marking *fp* is placed below the first eighth-note group.

200

Musical notation for measure 200, featuring a bass clef and a 3/4 time signature. The melody consists of eighth-note groups. Dynamic markings *fp*, *f*, and *pp* are placed below the notes.

204

Musical notation for measure 204, featuring a bass clef and a 3/4 time signature. The melody consists of eighth notes and quarter notes. Dynamic markings *fp* and *fp* are placed below the notes.

208

Musical notation for measure 208, featuring a bass clef and a 3/4 time signature. The melody includes quarter notes, eighth notes, and a final eighth-note group with a double bar line. Dynamic markings *fp*, *f*, and *ff* are placed below the notes.

211

Musical notation for measure 211, featuring a bass clef and a 3/4 time signature. The melody includes eighth notes, quarter notes, and a final quarter note with a double bar line.

214

Musical notation for measure 214, featuring a bass clef and a 3/4 time signature. The melody consists of a series of half notes with a slur. Dynamic markings *pp*, *mf*, and *ff* are placed below the notes.

220

Musical notation for measure 220, featuring a bass clef and a 3/4 time signature. The melody consists of quarter notes and eighth notes. The dynamic marking *pp* is placed below the first note.

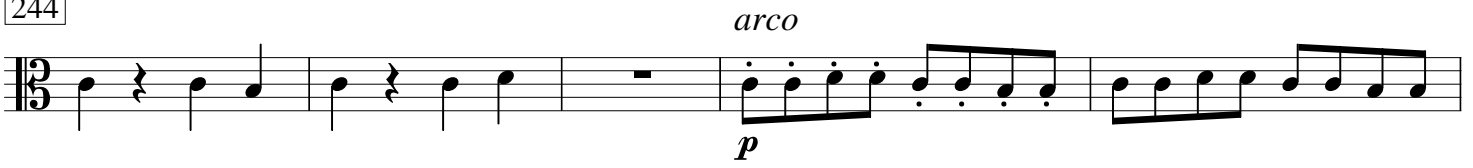
226

Musical notation for measure 226, featuring a bass clef and a 3/4 time signature. The melody consists of quarter notes and half notes with a slur. The dynamic marking *pp* is placed below the first note. The measure ends with a double bar line and a repeat sign.

239



244



249



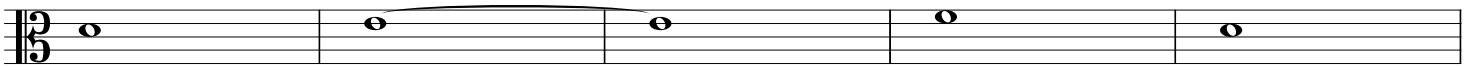
253



256



261



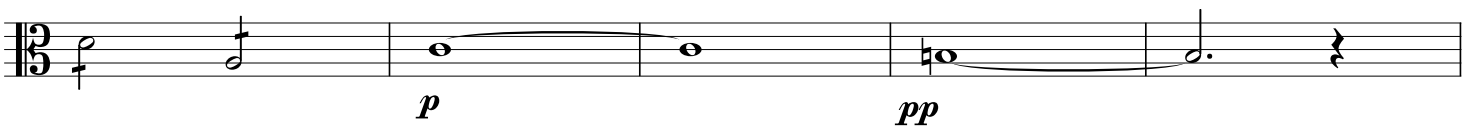
266



271



276



281

Musical notation for measure 281, featuring a continuous eighth-note pattern in the bass clef. The dynamic marking is *p*. A double bar line is present under the fourth measure.

285

Musical notation for measure 285, featuring a continuous eighth-note pattern in the bass clef. The dynamic marking is *ff*. The pattern ends with two measures of whole notes.

289

Musical notation for measure 289, featuring a long note in the bass clef. The dynamic marking is *p* for the first half and *pp* for the second half. The measure ends with a quarter note and a quarter rest.

293

Musical notation for measure 293, featuring a continuous eighth-note pattern in the bass clef. The dynamic marking is *p*. A double bar line is present under the fourth measure.

297

Musical notation for measure 297, featuring a continuous eighth-note pattern in the bass clef. The dynamic marking is *ff*. The pattern ends with two measures of whole notes.

301

Musical notation for measure 301, featuring a sequence of eighth notes in the bass clef with alternating dynamics: *p*, *f*, *p*, *f*, *p*, *p*, *f*, *p*, *f*, *p*. The measure ends with a quarter rest and a quarter note.

305

Musical notation for measure 305, featuring eighth notes with accents in the bass clef. The dynamic marking is *mf* for the first half and *ff* for the second half. The measure ends with two measures of whole notes.

309

Musical notation for measure 309, featuring a continuous eighth-note pattern in the bass clef.

312

Musical notation for measure 312, featuring eighth notes in the bass clef. The measure ends with a quarter rest and a quarter note.

Marsch

5/4 [f] *ff*

5 *p*

11 *ff*

15 4

21 *p*

24 *fp ff*

27 *pp ff*

31

35 *ff* 2

40



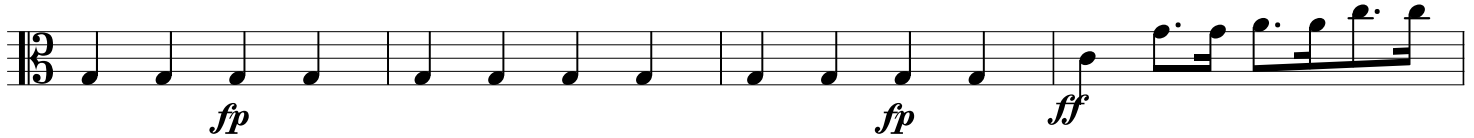
44



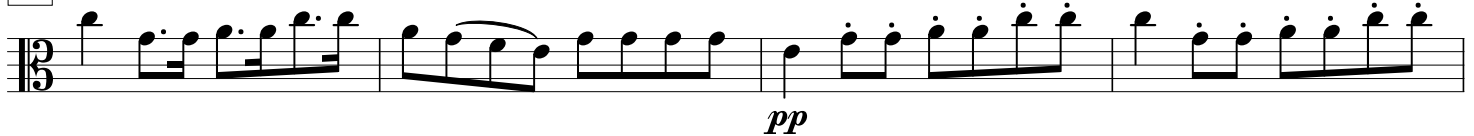
47



54



58



62



66



70

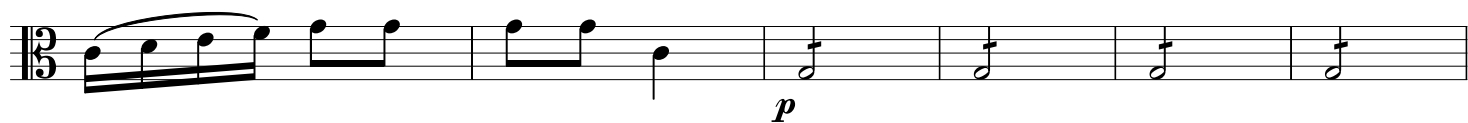


74



Allegretto

7



13



19



25



31



37



43



49



55



61



67



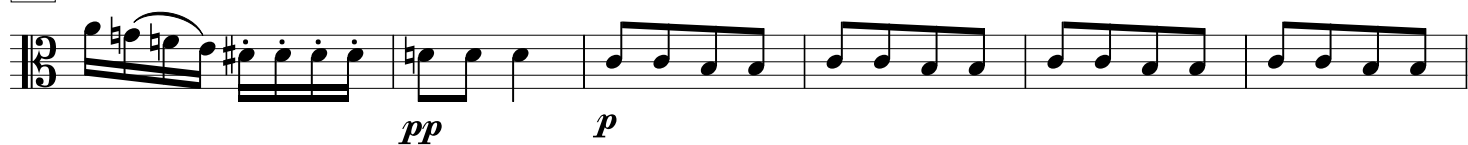
73



77



82



88



92



97



103



111

p *f*

115

ff

118

p

124

128

f

132

ff

136

140

144 *tempo rubato*

p

150

Andante *Adagio* GP *tempo lmo*

$\frac{4}{4}$ $\frac{4}{4}$ $\frac{3}{3}$

ff